

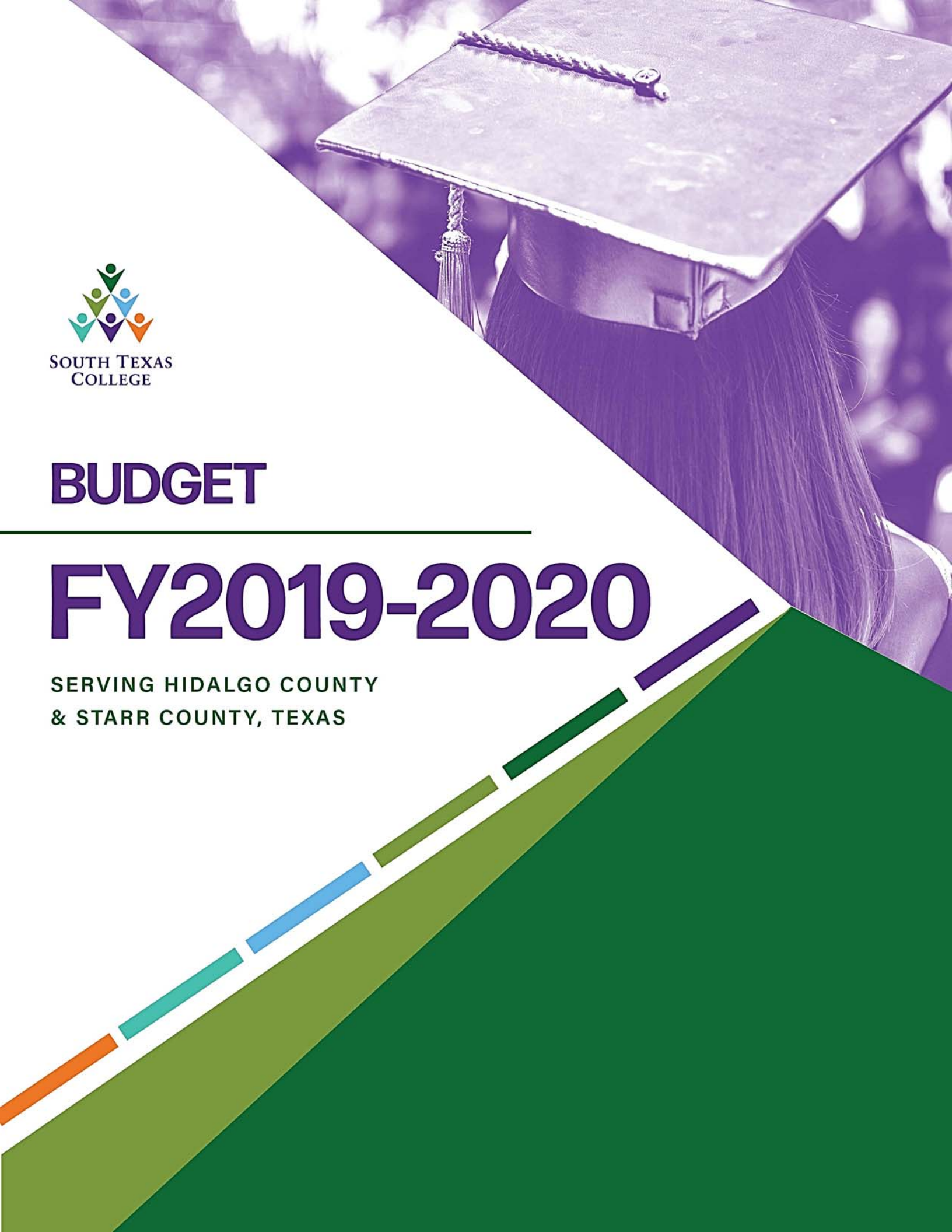


SOUTH TEXAS
COLLEGE

BUDGET

FY2019-2020

SERVING HIDALGO COUNTY
& STARR COUNTY, TEXAS



South Texas College Budget

Fiscal Year 2019-2020



**SOUTH TEXAS
COLLEGE**

Hidalgo County and Starr County, Texas

South Texas College
Budget
For The Fiscal Year Ending August 31, 2020

TABLE OF CONTENTS

INTRODUCTORY SECTION

Board of Trustees and President	1-3
Comprehensive Mission: Vision, Purpose, Core Values, Guiding Principles & Strategic Directions	4
Fact Sheet 2019-2020	5
Programs of Study 2019-2020	6
Summary of Fall Semester Headcount, Unduplicated Annual Headcount and Annual Full Time Equivalent (FTE)	7

ALL FUNDS SUMMARY

Summary of Revenues and Transfers and Expenditures, Transfers and Reserves by Fund - Current and Plant Funds	9
-----------------------------------------------------------------------------------------------------------------------	---

UNRESTRICTED FUND REVENUES

Revenues by Source - Pie Chart.....	12
Revenues by Source - Comparison of Previous Fiscal Year with Fiscal Year Ending August 31, 2020 - Pie Chart	13
Summary of Revenues - Budget and Actual - Comparison of Previous Fiscal Years with Fiscal Year Ending August 31, 2020	14
Detail of Revenues by Source - Comparison of Previous Fiscal Years with Fiscal Year Ending August 31, 2020	15-17

UNRESTRICTED FUND EXPENDITURES

Expenditures by Function (Without Transfers and Reserves) - Pie Chart	20
Expenditures by Function - Comparison of Previous Fiscal Year with Fiscal Year Ending August 31, 2020 - Pie Chart	21
Expenditures by Classification (Without Transfers and Reserves) - Pie Chart	22
Expenditures by Classification - Comparison of Previous Fiscal Year with Fiscal Year Ending August 31, 2020 - Pie Chart	23
Summary of Expenditures by Function and Classification.....	24-25
Summary of Expenditures by Function - Budget and Actual - Comparison of Previous Fiscal Years with Fiscal Year Ending August 31, 2020	26
Summary of Expenditures by Classification - Budget and Actual - Comparison of Previous Fiscal Years with Fiscal Year Ending August 31, 2020	27

South Texas College
Budget
For The Fiscal Year Ending August 31, 2020

TABLE OF CONTENTS *(Continued)*

UNRESTRICTED FUND EXPENDITURES BY FUNCTION, CLASSIFICATION AND ORGANIZATION

Detail of Expenditures by Function, Classification and Organization.....29-55

UNRESTRICTED FUND CAPITAL EXPENDITURES

Summary of Capital Expenditures by Function and Organization 57
Detail of Capital Expenditures by Function and Organization58-59

AUXILIARY FUND

Detail of Revenues by Source - Comparison of Previous Fiscal Years with
Fiscal Year Ending August 31, 2020 61
Detail of Expenditures by Classification and Organization.....62-63

RESTRICTED FUND

Detail of Revenues by Source - Comparison of Previous Fiscal Years with
Fiscal Year Ending August 31, 202065-72
Detail of Expenditures by Classification and Fund.....74-83

ENDOWMENT FUND

Summary of Revenues, Expenditures and Transfers – Budget and Actual - Comparison of
Previous Fiscal Years with Fiscal Year Ending August 31, 2020..... 85

PLANT FUND - UNEXPENDED

Unexpended - Construction Fund - Summary of Revenues, Expenditures and Transfers -
Budget and Actual..... 87
Unexpended - Construction Fund - Detail of Projected Expenditures for Approved
Construction Projects88-91

South Texas College
Budget
For The Fiscal Year Ending August 31, 2020

TABLE OF CONTENTS *(Continued)*

PLANT FUND - RENEWALS AND REPLACEMENTS

Renewals and Replacements Fund - Summary of Revenues, Expenditures and Transfers - Budget and Actual.....	93
Renewals & Replacements Fund - Detail of Projected Expenditures for Approved Renewals & Replacements Projects.....	94-96

PLANT FUND - RETIREMENT OF INDEBTEDNESS

Retirement of Indebtedness Fund - Summary of Revenues, Expenditures and Transfers - Budget and Actual.....	97
---------------------------------------------------------------------------------------------------------------	----

SECTION 140.0045 EXPENDITURES

Summary of Local Government Code Section 140.0045 Expenditures	99
----------------------------------------------------------------------	----

RESOLUTION

Resolution Adopting the Budget of South Texas College for the Fiscal Year 2019-2020	101-102
-------------------------------------------------------------------------------------------	---------

Introductory Section

South Texas College
Budget
For the Fiscal Year Ending August 31, 2020

Board of Trustees and President

PAUL R. RODRIGUEZ
CHAIRMAN



CEO of Valley Land Title Co.
District 3
Representing South McAllen, Southwest Pharr, Hidalgo, Sharyland, Southeast Mission, and Granjeno
First Term: August 2012 – May 2016
Second Term: May 2016 – May 2022
Serves as Chairman of the Board, member of the Finance, Audit, & Human Resources Committee, and member of the Facilities Committee.
Formerly served as Secretary of the Board, Chair and member of the Finance, Audit, & Human Resources Committee, and member of the Facilities Committee.

ROSE BENAVIDEZ
VICE CHAIR



President of Starr County Industrial Foundation
District 1
Representing Starr County
First Term: Nov. 2009 – May 2012
Second Term: May 2012 – May 2018
Third Term: May 2018 – May 2024
Serves as Vice Chair of Board, member of the Finance, Audit, & Human Resources Committee, and member of the Facilities Committee.
Formerly served as Chair and Vice Chair of the Board, member of the Facilities Committee, and member of the Finance, Audit, & Human Resources Committee.

ROY DE LEÓN
SECRETARY



Branch Retail Executive of BBVA Compass Bank – Mercedes
District 7
Representing Northeast Hidalgo County, North Weslaco, Edcouch, Elsa, La Villa, Mercedes, Monte Alto, Northeast Alamo, Northeast Edinburg, and Hargill (Appointed 1997 - 1998)
First Term: May 1998 – May 2002
Second Term: May 2002 – May 2008
Third Term: May 2008 – May 2014
Fourth Term: May 2014 – May 2020
Serves as Secretary of the Board and Chair of the Finance, Audit, & Human Resources Committee.
Formerly served as Chair, Vice Chair, and Secretary of the Board, Chair and member of the Finance, Audit, & Human Resources Committee, and member of the Facilities Committee.

South Texas College
Budget
For the Fiscal Year Ending August 31, 2020

Board of Trustees and President

VICTORIA CANTU
MEMBER



CEO of Children's Education Station, LLC
District 2
Representing La Joya, Western Mission, Palmview, Sullivan City, Penitas, and Western Alton
First Term: May 2018 – May 2024
Serves as member of the Education and Workforce Development Committee.

GARY GURWITZ
MEMBER



Managing Partner, Atlas, Hall & Rodriguez, L.L.P., McAllen
District 4
Representing North McAllen, Northwest Pharr, Palmhurst, Northeast Mission, and Southwest Edinburg
(Appointed 1993 - 1998)
Second Term: May 1998 – May 2004
Third Term: May 2004 – May 2010
Fourth Term: May 2010 – May 2016
Fifth Term: May 2016 – May 2022
Serves as Chair of the Facilities Committee and member of the Education and Workforce Development Committee.
Formerly served as Chair, Vice Chair, and Secretary of the Board, Chair and member of the Facilities Committee, member of the Finance, Audit, & Human Resources Committee, and member of the Education and Workforce Development Committee.

DR. ALEJO SALINAS, JR.
MEMBER



Retired Superintendent/Superintendent Emeritus, Hidalgo ISD
District 5
Representing Northwest Hidalgo County, Edinburg, North San Juan, and Northeast Pharr
First Term: May 1996 – May 2002
Second Term: May 2002 – May 2008
Third Term: May 2008 – May 2014
Fourth Term: May 2014 – May 2020
Serves as Chair of the Education and Workforce Development Committee and member of the Facilities Committee.
Formerly served as Chair and Vice Chair of the Board, Chair and member of the Facilities Committee, Chair and member of the Education and Workforce Development Committee, and member of the Finance, Audit, & Human Resources Committee.

**South Texas College
Budget
For the Fiscal Year Ending August 31, 2020**

Board of Trustees and President

**RENE GUAJARDO
MEMBER**



Human Resources Director, Mercedes ISD
District 6
Representing Donna, South Alamo, South San Juan, Southeast Pharr, South
Weslaco, and Progreso
First Term: May 2018 – May 2024
Serves as member of the Finance, Audit, & Human Resources Committee.
Formerly served as member of the Education and Workforce Development
Committee.

**DR. SHIRLEY A. REED
PRESIDENT**



Founding College President: June 1994 - Present



Vision, Mission, and Core Values

Comprehensive Mission for South Texas College

VISION STATEMENT

South Texas College will be a global model in educational innovation serving as a catalyst to drive regional prosperity, economic development, and the social mobility of those we serve.

MISSION STATEMENT

South Texas College is a public institution of higher education that provides educational opportunities through excellence in teaching and learning, workforce development, cultural enrichment, community service, and regional and global collaborations.

CORE VALUES

Student Success: We are committed to the personal, academic and career goals of each student.

Excellence: We are committed to excellence and innovation in teaching, learning, and services.

Opportunity: We are committed to providing access and support for students to achieve their academic and career goals.

Community: We are committed to equitable results through inclusion, diversity, collaboration, and engagement.

Integrity: We are committed to being respectful, professional, honest, accountable, and transparent.





FACT SHEET



ABOUT

Founded in 1993, South Texas College is accredited by the Commission on Colleges of the Southern Association of Colleges and Schools to award baccalaureate and associate degrees. Over 32,000 credit and over 13,000 non-credit students attend STC, and a faculty and staff of more than 2,600 serve STC's five state of the art campuses, two Higher Education Centers and one virtual campus.

CREATION

South Texas College was created on September 1, 1993, by Texas Senate Bill 251 to serve Hidalgo and Starr counties. A confirmation election, held on August 12, 1995, established a taxing district for the college. Seven districts, based on population, were also approved for single-member representation on the Board of Trustees. A community leader from each of the seven districts was originally appointed by Governor Ann Richards to serve on the founding Board of Trustees. Since then, an election process has been established, and all board members are elected for six year terms.

DUAL CREDIT

South Texas College is a model of collaboration with public schools and has one of the largest dual credit programs in the state of Texas. A variety of dual credit programs have been instituted, including six academies, drop-out recovery programs and other unique initiatives with 24 school districts, and over 70 high school sites throughout Hidalgo and Starr counties. The programs allow eligible students to take college courses while attending high school. The Dual Credit Program at STC is one of the largest in the state of Texas and has provided tuition-free dual credit to over 106,000 high school students, saving families over \$200 million in tuition since 2000. In addition, South Texas College leads the nation in the number of Early College High School partnerships developed with area Independent School Districts. This includes 29 Early College High Schools and two Career and Technical Early College High Schools.

CONTINUING, PROFESSIONAL & WORKFORCE EDUCATION

The program provides opportunities for lifelong learners who want to upgrade their skills, change careers, renew licenses and certifications, or seek personal enrichment. There is a wide variety of course offerings including online classes. Additionally the division also offers customized training to area businesses, industries and the community. Training programs are tailored to a client's specific needs in terms of content, schedule and location.

ARTICULATION AGREEMENTS

For those students who wish to continue their education beyond an associate's degree, STC has more than 80 articulation agreements in place with colleges across the country.

ACCREDITATION

South Texas College is accredited by the Southern Association of Colleges and Schools Commission on Colleges to award the Baccalaureate and Associate degrees. Contact the Commission on Colleges at 1866 Southern Lane, Decatur, Georgia 30033-4097 or call 404-679-4500 for questions about the accreditation of South Texas College.

South Texas College's offerings are approved by the Texas Higher Education Coordinating Board and the Texas Education Agency.

ASSOCIATE DEGREES AND CERTIFICATES

South Texas College offers 121 degree and Certificate program options, including Associate's degrees in a variety of art, science, technology and allied health fields of study. The college also offers 32 online associate degrees and certificates options through South Texas College Online.

BACCALAUREATE DEGREES

South Texas College is proud to be one of four community colleges in the State of Texas accredited to offer baccalaureate degrees in Applied Technology and Applied Science. South Texas College offers Bachelor of Applied Technology degrees in Technology Management, Computer and Information Technologies, and Medical and Health Services Management. A Bachelor of Applied Science in Organizational Leadership is also offered. Additionally, South Texas College was granted legislative authority during the 85th Legislative Session to offer the Bachelor of Science in Nursing.

SOUTH TEXAS COLLEGE ONLINE

Through South Texas College Online, students not only have access to more than 241 unique online courses, full online library services, registration, advising, counseling, payment services, financial aid, bookstore and testing, and so much more. Currently 19 associate degrees, 9 certificates and all four bachelor programs are available online, making it possible for students to earn their degrees without ever setting foot on campus.

INDUSTRY TRAINING & ECONOMIC DEVELOPMENT

South Texas College is the fiscal agent and home of the executive offices for the North American Advanced Manufacturing Research and Education Initiative (NAAMREI). In addition, the Institute for Advanced Manufacturing (IAM) is linked to all community and technical colleges in the region. South Texas College has taken the lead in helping train workers to fuel a regional manufacturing economy and to support innovations in rapid response manufacturing.

ADA COMPLIANCE

In accordance with the Americans with Disabilities Act of 1990, Title IX of the Education Amendment of 1972, and Section 504 of the Vocational Rehabilitation Act of 1973, South Texas College provides accommodations as required by law to afford equal educational opportunities to all people. For questions about the accreditation of South Texas College, contact the Commission on Colleges at (404) 679-4500.

BOARD OF TRUSTEES

Paul R. Rodriguez
Chairman

Rose Benavidez
Vice Chair

Roy de León
Secretary

Victoria Cantú
Member

Rene Guajardo
Member

Gary Gurwitz
Member

Dr. Alejo Salinas, Jr.
Member

PRESIDENT

Shirley A. Reed
M.B.A., Ed.D

LOCATIONS

Pecan Campus
McAllen, TX

Mid-Valley Campus
Weslaco, TX

Starr County Campus
Rio Grande City, TX

Technology Campus
McAllen, TX

Dr. Ramiro R. Casso
Nursing & Allied Health Campus
McAllen, TX

STC Regional Center
for Public Safety Excellence
Pharr, TX

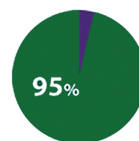
Higher Education Center at La Joya
La Joya, TX

Higher Education Center at Pharr
Pharr, TX

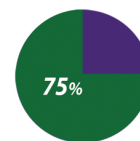
VITAL STATISTICS



More than 70% of student population are the first in their families to attend college



More than 95% of students are Hispanic



More than 75% take advantage of some form of financial aid (excluding dual enrollment students)

Class size averages 26 students per faculty member



SOUTHTEXASCOLLEGE.EDU



PROGRAMS OF STUDY

2019-2020

SouthTexasCollege.edu

For the 2019-2020 academic year South Texas College has 123 degrees and certificates available to its students: 5 Baccalaureate degrees, one Associate of Arts Degree in 19 fields of study, one Associate of Arts in Teaching in 3 fields of study, one Associate of Science Degree in 9 fields of study, 31 Associate of Applied Science Degrees, and 56 Certificates.

BUSINESS, PUBLIC SAFETY, & TECHNOLOGY

ASSOCIATE OF ARTS DEGREE

Field of Study
Business Administration-Transfer Plan

ASSOCIATE OF APPLIED SCIENCE DEGREES

Administrative Office Assistant
Automotive Technology
-Specialization: GM-ASEP
Architectural and Engineering Design Technology
-Specializations: Architectural and Civil Engineering Technology
Architectural and Visual Technology
Business Administration
-Specializations: Accounting
Import/Export/Logistics
Management
Marketing
Computer & Advanced Technologies
-Specializations: Computer Maintenance Technology
Computer Support
and Telecommunication Specialist
Construction Supervision
Culinary Arts
-Specialization: Baking and Pastry Arts
Diesel Technology
Electrician Technology
Fire Science Technology
Heating, Ventilation, Air Conditioning & Refrigeration Technology
Human Resource Specialist
Information Technology
-Specializations: Computer Specialist
Cybersecurity Specialist
Networking Specialist
Law Enforcement
Legal Office Assistant
Paralegal
Precision Manufacturing Technology
Public Administration
Welding

CERTIFICATES

Accounting Clerk
Architectural and Civil Engineering Technology
Architectural and Engineering Design Technology
Architectural and Visual Technology
Automotive Maintenance and Light Repair***
Automotive Technology
Basic Firefighter
Basic Peace Officer
Cloud Computing and Virtualization Specialist
Combination Welding
Commercial Baking
Commercial Cooking
Computer and Information Technologies Specialist
Computer and Internet Specialist
Computer and Network Specialist
Computer Applications Specialist
Computer Maintenance Specialist
Construction Supervision Assistant
Cybersecurity Specialist
Diesel Technology
Electrician Assistant

Employee and Labor Relations Assistant
Fast Start Precision Manufacturing
Heating, Ventilation, Air Conditioning & Refrigeration Technology
Human Resource Assistant
Import/Export
Legal Office Specialist
Logistics
Management
Marketing
Mechatronics Technology Specialist
Multimedia Specialist
Office Specialist
Payroll Assistant
Precision Manufacturing Technology
Public Services Assistant
Recruiter Assistant
Structural Welding
Telecommunication Support Specialist
Voice and Data Technician

LIBERAL ARTS & SOCIAL SCIENCES

ASSOCIATE OF ARTS DEGREES

Fields of Study
Fine and Performing Arts--
Drama
Graphic Arts
Music
Visual Arts

Humanities--
English
History
Interdisciplinary Studies
Language and Cultural Studies
Concentration: -American Sign Language
-Spanish
Mexican-American Studies
Philosophy

Social and Behavioral Sciences--
Anthropology
Communication
Concentration: -Advertising/Public Relations
-Communication Studies

Criminal Justice
Kinesiology
Political Science
Psychology
Social Work
Sociology

ASSOCIATE OF ARTS IN TEACHING

Fields of Study
EC-6 Generalist
4-8 Generalist
8-12

ASSOCIATE OF APPLIED SCIENCE DEGREES

American Sign Language and Interpreting Studies
-Specialization: Sign Language Interpreter
Child Development & Early Childhood

CERTIFICATES

Child Development & Early Childhood
Administration of Early Childhood Programs
-Specializations: Infant and Toddler
Pre-School
Deaf Support Specialist
Personal Trainer
Trilingual Interpreter (Enhanced Skills Certificate)

MATH, SCIENCE & BACHELOR PROGRAMS

ASSOCIATE OF SCIENCE DEGREES

Fields of Study
Biology
Chemistry
Computer Information Systems
Computer Science
Engineering
Interdisciplinary Studies
Mathematics
Physics
Pre-Pharmacy

BACCALAUREATE DEGREES

Bachelor of Applied Science in:
Organizational Leadership

Bachelor of Applied Technology in:
Computer and Information Technologies
Medical and Health Services Management
Technology Management

Bachelor of Science in:
Nursing: RN to BSN**

NURSING & ALLIED HEALTH

ASSOCIATE OF APPLIED SCIENCE DEGREES

Associate Degree Nursing
-LVN/RN Transition
-EMT Paramedic to RN
Diagnostic Medical Sonography**
Emergency Medical Technology-Paramedic
Health Information Technology
Medical Assistant Technology
Occupational Therapy Assistant
Pharmacy Technology
Physical Therapist Assistant
Radiologic Technology
Respiratory Therapy

CERTIFICATES

Diagnostic Medical Sonography (Advanced Technical Certificate)
Electronic Health Records Specialist
Emergency Medical Technician-Basic
Emergency Medical Technician-Advanced***
Emergency Medical Technician-Paramedic*
Medical Assistant Technology
Medical Coding Specialist
Medical Information/Transcription Specialist
Medical Office Specialist
Patient Care Assistant
Vocational Nursing

*This is a two-year certificate.

** Pending approval from Southern Association of Colleges and Schools Commission on Colleges and Department

***Pending approval from the Texas Higher Education Coordinating Board, Southern Association of Colleges and Schools Commission on Colleges and Department of Education.

Experience Exceptional

South Texas College

Summary of Fall Semester Headcount, Unduplicated Annual Headcount and Annual Full Time Equivalent (FTE)

Academic Year	Fall Semester Headcount	Unduplicated Annual Headcount	Annual FTE
1993 - 94	1,055	2,719	1,318
1994 - 95	2,227	4,720	2,221
1995 - 96	3,254	6,893	3,087
1996 - 97	5,416	9,756	4,696
1997 - 98	6,849	11,861	5,737
1998 - 99	9,598	14,391	7,572
1999 - 00	10,364	15,214	7,901
2000 - 01	11,183	16,793	8,343
2001 - 02	12,443	18,357	9,275
2002 - 03	13,691	20,447	10,173
2003 - 04	15,228	21,927	10,529
2004 - 05	17,035	23,847	11,384
2005 - 06	16,233	23,594	11,147
2006 - 07	18,460	25,423	11,675
2007 - 08	19,808	27,940	12,805
2008 - 09	21,666	30,734	14,162
2009 - 10	26,368	36,169	17,918
2010 - 11	28,006	36,951	18,708
2011 - 12	29,513	38,900	18,747
2012 - 13	29,812	40,009	19,230
2013 - 14	30,233	40,458	19,509
2014 - 15	30,849	42,079	19,773
2015 - 16	33,994	45,665	21,422
2016 - 17	33,044	44,768	21,239
2017 - 18	31,374	43,251	21,394
2018 - 19	31,640		
2019 - 20*	32,419		

* Projected



SOUTH TEXAS COLLEGE

This page intentionally left blank.

All Funds Summary

South Texas College
Current & Plant Funds
Summary of Revenues and Transfers and Expenditures,
Transfers and Reserves by Fund

Budget for Fiscal Year 2019 - 2020

Fund	Revenues and Transfers*	Expenditures, Transfers and Reserves
Unrestricted Fund	\$ 181,730,329	\$ 181,730,329
Auxiliary Fund	\$ 4,891,952	\$ 4,891,952
Restricted Fund	\$ 81,031,544	\$ 81,031,544
Endowment Fund	\$ 6,013	\$ 6,013
Plant Fund - Unexpended - Construction	\$ 17,037,045	\$ 17,037,045
Plant Fund - Renewals & Replacements	\$ 7,624,000	\$ 7,624,000
Plant Fund - Retirement of Indebtedness	\$ 13,804,501	\$ 13,804,501

* Amounts may include Fund Balance (Carryover).



SOUTH TEXAS COLLEGE

This page intentionally left blank.

Unrestricted Fund Revenues



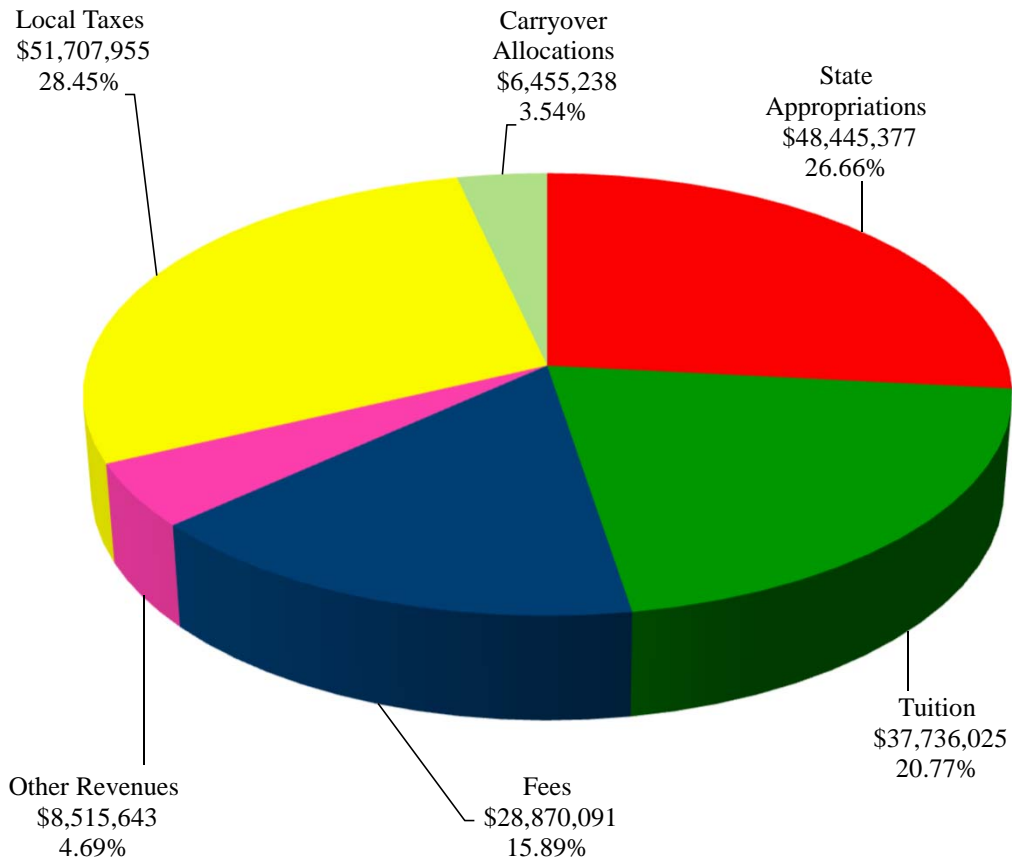
SOUTH TEXAS COLLEGE

This page intentionally left blank.

South Texas College Unrestricted Fund Revenues by Source

Budget for Fiscal Year 2019- 2020

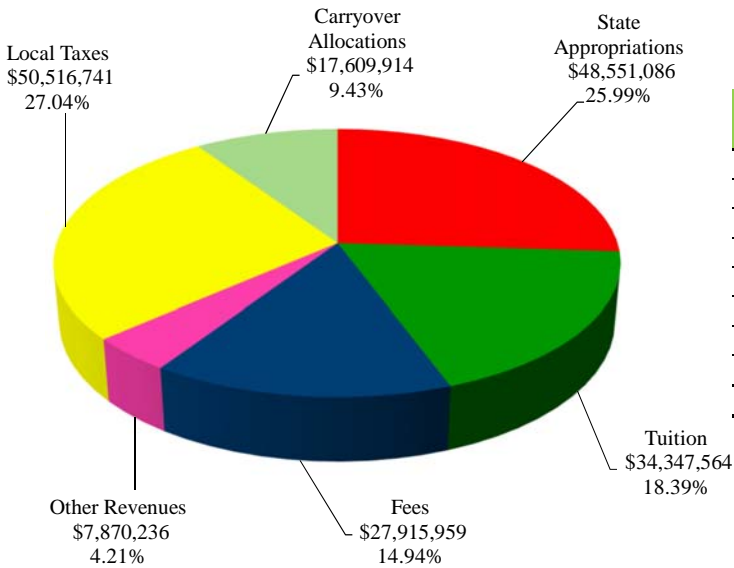
Source of Revenues	FY '20 Budget	Percentage
State Appropriations	\$ 48,445,377	26.66%
Tuition	37,736,025	20.77%
Fees	28,870,091	15.89%
Other Revenues	8,515,643	4.69%
Local Taxes	51,707,955	28.45%
Carryover Allocations	6,455,238	3.54%
Total Revenues	\$ 181,730,329	100.00%



South Texas College Unrestricted Fund Revenues by Source

Comparison of Previous Fiscal Year with Fiscal Year Ending August 31, 2020

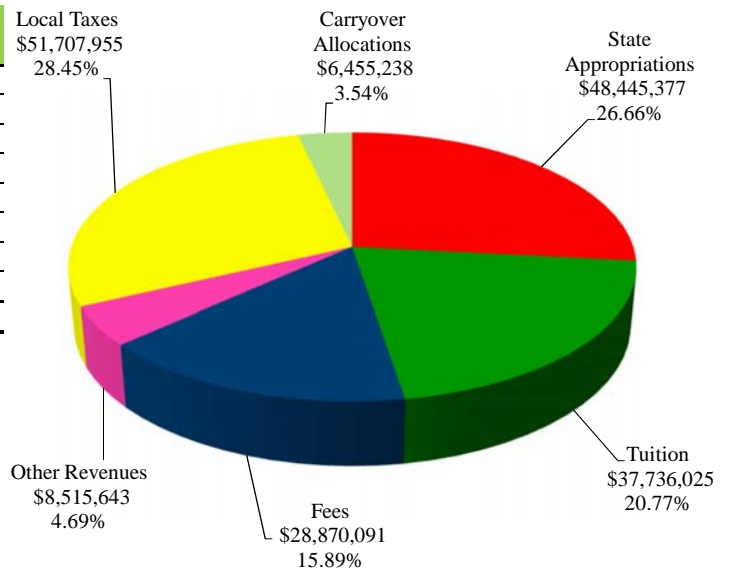
Fiscal Year 2019



Source of Revenues	FY '19 Budget (As Amended)	Percentage
State Appropriations	\$ 48,551,086	25.99%
Tuition	34,347,564	18.39%
Fees	27,915,959	14.94%
Other Revenues	7,870,236	4.21%
Local Taxes	50,516,741	27.04%
Carryover Allocations	17,609,914	9.43%
Total Revenues	\$ 186,811,500	100.00%

Fiscal Year 2020

Source of Revenues	FY '20 Budget	Percentage
State Appropriations	\$ 48,445,377	26.66%
Tuition	37,736,025	20.77%
Fees	28,870,091	15.89%
Other Revenues	8,515,643	4.69%
Local Taxes	51,707,955	28.45%
Carryover Allocations	6,455,238	3.54%
Total Revenues	\$ 181,730,329	100.00%



South Texas College
Unrestricted Fund
Summary of Revenues - Budget and Actual

Comparison of Previous Fiscal Years with Fiscal Year Ending August 31, 2020

Revenue Source	FY '18 Budget (As Amended)	FY '18 Actual	FY '19 Budget (As Amended)	FY '19 Estimated*	FY '20 Budget
State Appropriations	\$ 48,450,491	\$ 48,398,217	\$ 48,551,086	\$ 48,563,897	\$ 48,445,377
Tuition	33,653,172	31,123,078	34,347,564	32,217,193	37,736,025
Fees	27,669,015	28,572,893	27,915,959	28,612,151	28,870,091
Other Revenues	6,672,998	7,942,611	7,870,236	9,149,406	8,515,643
Local Taxes	48,691,317	48,931,234	50,516,741	53,481,622	51,707,955
Carryover Allocations	26,946,624	26,946,624	17,609,914	17,609,914	6,455,238
Total Unrestricted Fund Revenues	\$ 192,083,617	\$ 191,914,657	\$ 186,811,500	\$ 189,634,183	\$ 181,730,329

* Amounts are estimated. Actual amounts will be available after fiscal year end and completion of audit.

The Unrestricted Fund includes those economic resources of the college which are expendable for the purpose of performing the primary missions of the institution-instruction, research, and public service - and which are not restricted by external sources or designated by the governing board of other than operating expenditures.

Note:

State Appropriations Revenues include state on-behalf benefits which are budgeted in the Unrestricted Fund and are subsequently transferred to the Restricted Fund along with related expenditures for Annual Financial Report purposes.

South Texas College
Unrestricted Fund
Detail of Revenues by Source

Comparison of Previous Fiscal Years with Fiscal Year Ending August 31, 2020

Revenue Source	FY '18 Budget (As Amended)	FY '19 Budget (As Amended)	FY '20 Budget
<i>State Contact Hour Appropriation</i>	\$ 40,226,013	\$ 40,226,013	\$ 42,172,061
<i>Other State Appropriations</i>			
Optional Retirement Program (ORP)	536,458	556,134	575,785
Teacher Retirement System (TRS)	2,206,242	2,287,161	2,367,977
Higher Education Employees Group Insurance (HEGI)	5,481,778	5,481,778	3,329,554
Total Other State Appropriations	8,224,478	8,325,073	6,273,316
Total State Appropriations	48,450,491	48,551,086	48,445,377
<i>Tuition</i>			
Academic	30,303,893	29,678,340	31,491,699
Differential			
3000/4000 Level Courses	204,600	187,501	216,000
Associate Degree Nursing	485,050	489,500	682,500
Occupational Therapy Assistant	38,880	39,150	42,900
Physical Therapist Assistant	32,920	35,100	48,125
Radiologic Technology/Sonography	42,760	49,501	76,375
Vocational Nursing	202,600	280,501	360,001
Respiratory Therapy	32,559	45,000	55,250
Pharmacy Tech	27,480	39,375	39,875
Emergency Medical Technology	120,240	76,500	115,499
Patient Care Assistant	26,900	45,001	68,250
Biology	533,549	538,499	538,501
Chemistry	83,445	85,500	118,000
Physics	16,960	14,001	29,999
Astronomy	11,610	13,850	12,749
Architectural and Engineering Design Technology	-	55,560	81,000
Automotive and Diesel Technology	-	63,120	137,999
Culinary Arts	-	48,255	28,500
Electronic Equipment and Computer	-	75,990	33,000
Electrician Assistant	-	22,950	34,000
Fire Science	-	6,380	2,124
Heating, Ventilation and Air Conditioning	-	33,400	58,000
Geology	-	37,380	53,999
Physical Science	-	73,680	72,001
Engineering	-	15,975	19,000
Legal Assisting	-	-	7,970
Manufacturing Technology	-	-	49,710
Child Care and Development	-	-	82,160
Drama	-	-	14,110
Bachelor of Applied Science in Organizational Leadership	639,750	804,000	2,057,000
Continuing, Professional, and Workforce Education (CPWE)	1,858,321	1,906,966	1,955,787
Alternative Teacher Certification	108,151	110,953	113,789
CPWE - New Contracts	173,625	176,708	179,792
Industry Training and Economic Development (ITED)	600,000	1,260,622	1,010,323
Recovery of Cost - ITED	35,000	4,000	47,000
Recovery of Cost - CPWE	89,316	91,590	93,872
Less: Texas Public Education Grants	(2,014,437)	(2,057,284)	(2,290,834)
Total Tuition	33,653,172	34,347,564	37,736,025

South Texas College
Unrestricted Fund
Detail of Revenues by Source

Comparison of Previous Fiscal Years with Fiscal Year Ending August 31, 2020

Revenue Source	FY '18 Budget (As Amended)	FY '19 Budget (As Amended)	FY '20 Budget
<i>Fees</i>			
Registration Fee	4,915,000	4,863,500	7,031,700
Additional Registration Fee	832,680	814,320	-
Information Technology Fee	10,118,006	12,541,050	12,109,242
Learning Support Fee	6,745,338	5,016,420	4,843,697
Lab Fee	915,216	870,600	854,808
Electronic Distance Learning/VCT Course Fee	1,330,560	944,160	995,040
Physical Education Special Activity Fee	44,110	43,175	41,470
Add/Drop Fee	157,050	147,400	147,325
Withdrawal After Census Day Fee	65,100	59,250	64,150
Audit Fee	264	264	264
Credit by Examination Fee	2,376	2,904	5,544
Installment Plan Fee	347,515	340,515	333,375
Installment Late Payment Fee	241,955	217,420	243,320
Emergency Loan Late Payment Fee	62,615	50,085	53,690
Reinstatement Fee	62,800	60,000	78,400
Student ID Replacement Fee	11,130	8,310	7,770
Lost Library Book Fee	10,620	8,370	6,720
Returned Check Fee	2,880	2,400	2,250
Developmental Studies Fee	278,603	373,333	264,567
Dual Enrollment Late Processing Fee	60,800	27,200	11,200
Parking Fines	89,010	67,290	76,500
TSI Assessment Reservation and Preparation Fee	78,552	41,138	36,146
TSI Assessment Exam	82,686	43,303	38,048
Hybrid Course Fee	174,560	-	-
Parking Permit Fee	378,775	303,020	351,477
Third or More Attempts Fee	609,089	833,140	962,907
Fire Academy Fee	18,850	17,642	21,426
Enrollment in Developmental Studies Courses (>18 credit hours)	23,875	175,750	212,500
Higher Education Services Inc. (HESI) Exam Fee	9,000	44,000	76,555
Total Fees	27,669,015	27,915,959	28,870,091
<i>Other Revenues</i>			
Conferences - CPWE	64,742	64,742	64,742
Concurrent Enrollment Reimbursement Cost	4,183,366	4,498,863	4,454,217
Dual Credit Academy Participation Fee	363,785	425,000	454,250
Interest	1,413,962	2,225,000	2,750,000
Facility Lease-Texas A&M	25,000	-	-
Book Royalties - Developmental English	2,000	200	-
Administrative Cost - Veterans	4,500	4,500	6,000
Administrative Cost - Pell	75,000	80,000	72,000
Administrative Cost - Federal Work Study (FWS)	56,000	70,000	75,000
Administrative Cost - CPWE	104,946	107,619	110,299
Administrative Cost - Carl Perkins	74,185	84,200	91,145
Shuttle System Contribution	299,812	299,812	429,470
Testing Commission	3,000	9,800	7,820
NACES Commission	1,200	-	-
HiSET Commission	1,500	500	700
Total Other Revenues	6,672,998	7,870,236	8,515,643

**South Texas College
Unrestricted Fund
Detail of Revenues by Source**

Comparison of Previous Fiscal Years with Fiscal Year Ending August 31, 2020

Revenue Source	FY '18 Budget (As Amended)	FY '19 Budget (As Amended)	FY '20 Budget
<i>Local Taxes</i>			
Tax Collections	45,344,041	46,933,806	48,023,059
Delinquent Tax	1,993,348	2,169,142	2,260,745
Penalties, Interest	1,353,928	1,413,793	1,424,151
Total Local Taxes	48,691,317	50,516,741	51,707,955
<i>Carryover Allocations</i>			
Contingency Fund	1,500,000	2,000,000	1,813,783
Book Royalties - Developmental Studies	11,278	10,882	5,455
Unexpended Construction Plant Fund	6,000,000	5,000,000	3,000,000
Renewals & Replacements Plant Fund	1,000,000	1,000,000	-
Continuing, Professional, and Workforce Education	600,000	600,000	450,000
Capital Purchases	-	1,793,628	-
Prior Year M&O Tax Bond Program 2013-Supplies and Equipment	17,835,346	7,205,404	1,186,000
Total Carryover Allocations	26,946,624	17,609,914	6,455,238
Total Revenues	\$ 192,083,617	\$ 186,811,500	\$ 181,730,329
<i>Increase From Prior Fiscal Year</i>	8,226,440	(5,272,117)	(5,081,171)



SOUTH TEXAS COLLEGE

This page intentionally left blank.

Unrestricted Fund Expenditures



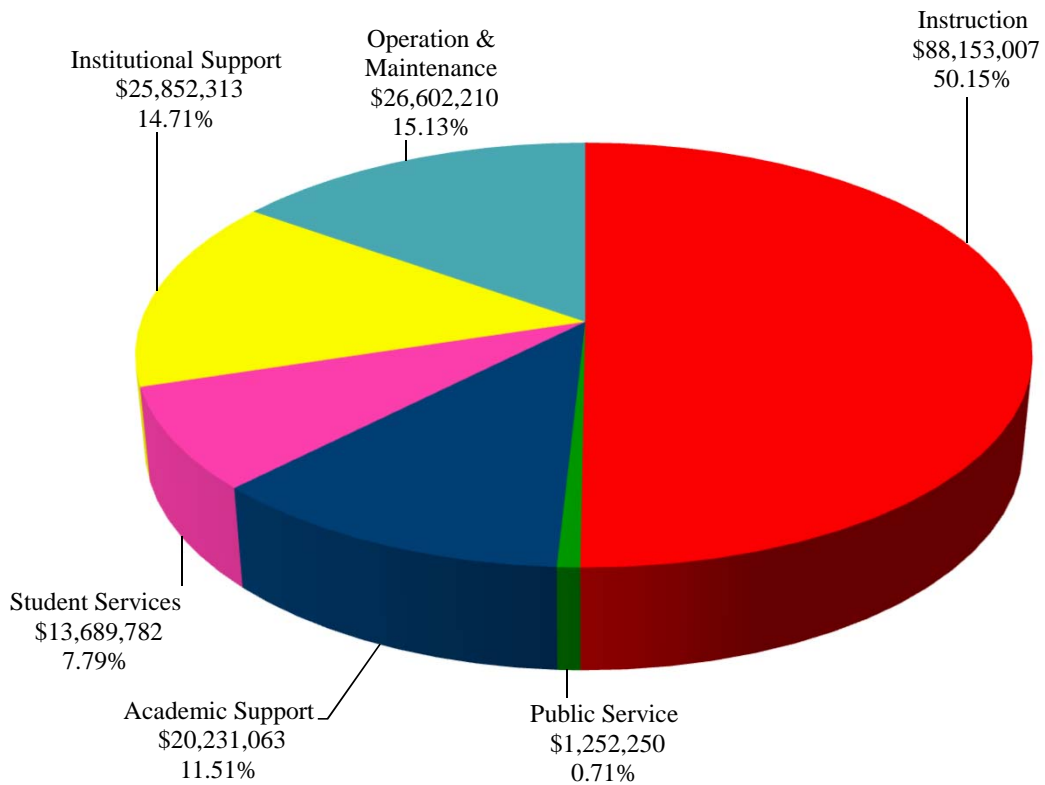
SOUTH TEXAS COLLEGE

This page intentionally left blank.

South Texas College
Unrestricted Fund
Expenditures by Function
(Without Transfers and Reserves)

Budget for Fiscal Year 2019 - 2020

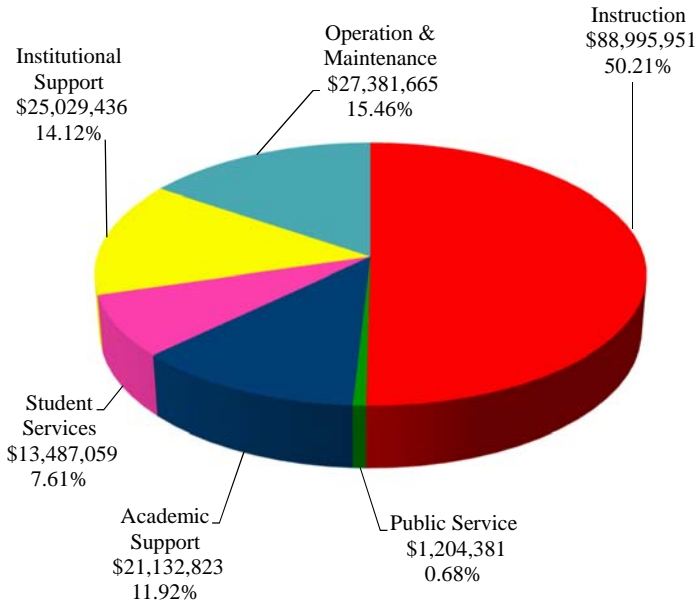
Function	FY '20 Budget	Percentage
Instruction	\$ 88,153,007	50.15%
Public Service	1,252,250	0.71%
Academic Support	20,231,063	11.51%
Student Services	13,689,782	7.79%
Institutional Support	25,852,313	14.71%
Operation & Maintenance	26,602,210	15.13%
Total Expenditures	\$ 175,780,625	100.00%



South Texas College Unrestricted Fund Expenditures by Function (Without Transfers and Reserves)

Comparison of Previous Fiscal Year with Fiscal Year Ending August 31, 2020

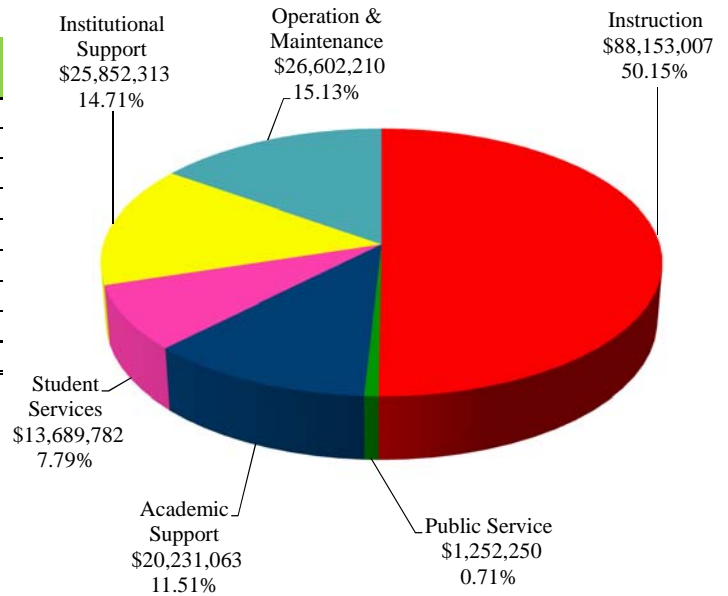
Fiscal Year 2019



Function	FY '19 Budget (As Amended)	Percentage
Instruction	\$ 88,995,951	50.21%
Public Service	1,204,381	0.68%
Academic Support	21,132,823	11.92%
Student Services	13,487,059	7.61%
Institutional Support	25,029,436	14.12%
Operation & Maintenance	27,381,665	15.46%
Total Expenditures	\$ 177,231,315	100.00%

Fiscal Year 2020

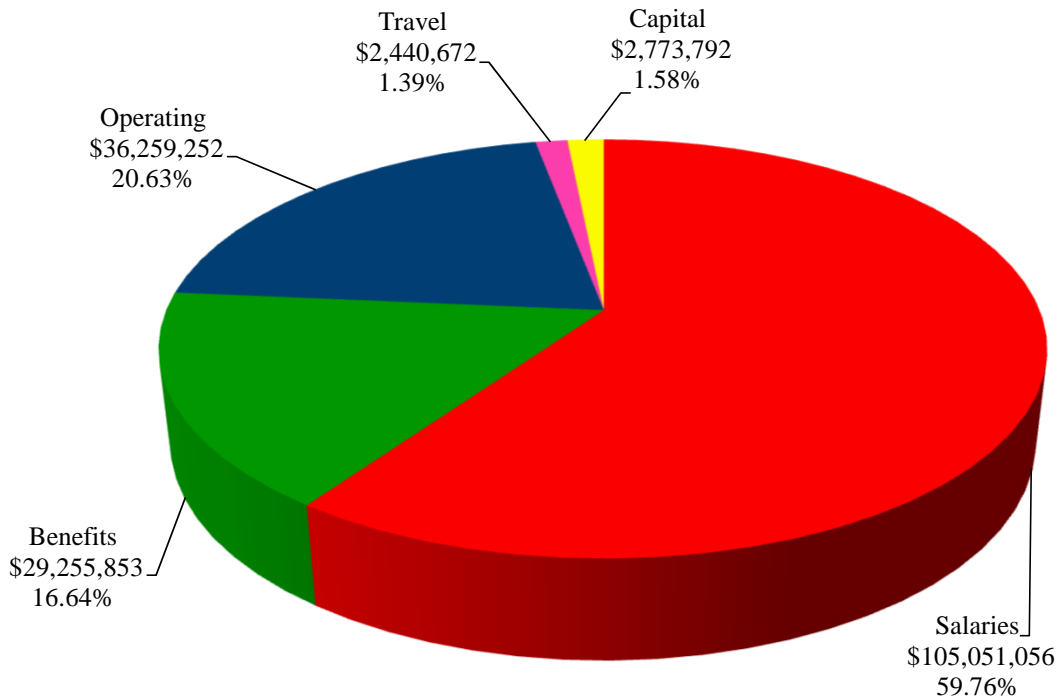
Function	FY '20 Budget	Percentage
Instruction	\$ 88,153,007	50.15%
Public Service	1,252,250	0.71%
Academic Support	20,231,063	11.51%
Student Services	13,689,782	7.79%
Institutional Support	25,852,313	14.71%
Operation & Maintenance	26,602,210	15.13%
Total Expenditures	\$ 175,780,625	100.00%



South Texas College
Unrestricted Fund
Expenditures by Classification
(Without Transfers and Reserves)

Budget for Fiscal Year 2019 - 2020

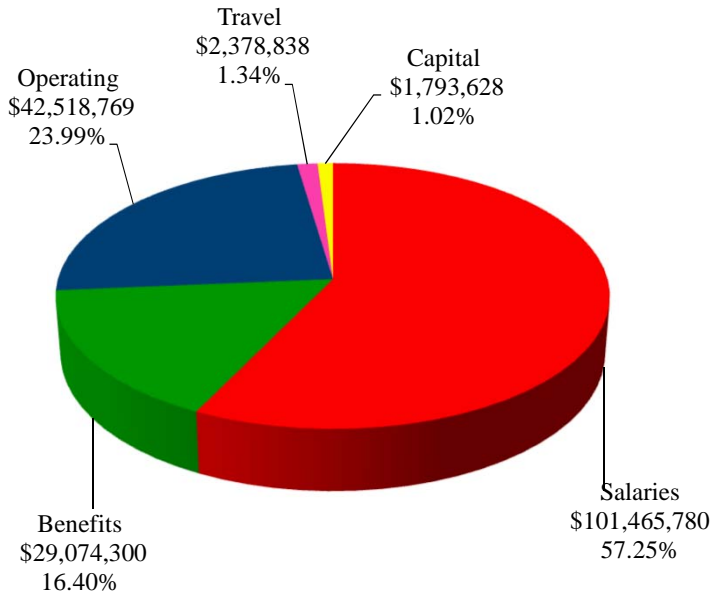
Classification	FY '20 Budget	Percentage
Salaries	\$ 105,051,056	59.76%
Benefits	29,255,853	16.64%
Operating	36,259,252	20.63%
Travel	2,440,672	1.39%
Capital	2,773,792	1.58%
Total Expenditures	\$ 175,780,625	100.00%



South Texas College Unrestricted Fund Expenditures by Classification (Without Transfers and Reserves)

Comparison of Previous Fiscal Year with Fiscal Year Ending August 31, 2020

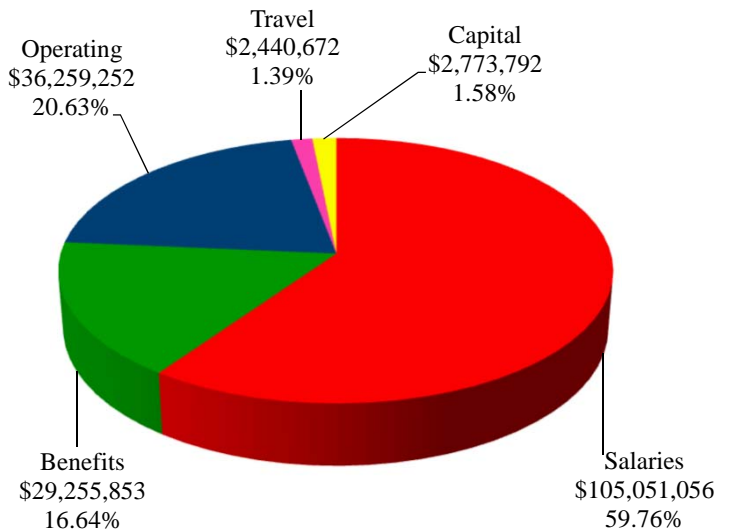
Fiscal Year 2019



Classification	FY '19 Budget (As Amended)	Percentage
Salaries	\$ 101,465,780	57.25%
Benefits	29,074,300	16.40%
Operating	42,518,769	23.99%
Travel	2,378,838	1.34%
Capital	1,793,628	1.02%
Total Expenditures	\$ 177,231,315	100.00%

Fiscal Year 2020

Classification	FY '20 Budget	Percentage
Salaries	\$ 105,051,056	59.76%
Benefits	29,255,853	16.64%
Operating	36,259,252	20.63%
Travel	2,440,672	1.39%
Capital	2,773,792	1.58%
Total Expenditures	\$ 175,780,625	100.00%



South Texas College
Unrestricted Fund
Summary of Expenditures by Function and Classification
Budget for Fiscal Year 2019 - 2020

Function / Classification	Salaries	Percent of Total	Benefits	Percent of Total	Operating	Percent of Total
Instruction	\$ 59,831,510	56.96%	\$ 16,484,223	56.35%	\$ 9,074,517	25.03%
Public Service	607,500	0.58%	90,944	0.31%	513,560	1.42%
Academic Support	12,456,004	11.86%	3,304,725	11.30%	3,679,585	10.15%
Student Services	8,891,565	8.46%	2,500,459	8.55%	1,995,060	5.50%
Institutional Support	12,357,387	11.76%	3,638,456	12.44%	9,258,053	25.53%
Operation & Maintenance - Plant	10,907,090	10.38%	3,237,046	11.05%	11,738,477	32.37%
Total - Without Transfers & Reserves	105,051,056	100.00%	29,255,853	100.00%	36,259,252	100.00%
Percent of Total Expenditures Without Transfers & Reserves	59.76%		16.64%		20.63%	
Transfers and Reserves						
Transfer-Construction Fund	-		-		3,000,000	
Transfer-ITED	-		-		949,704	
Contingency	-		-		2,000,000	
Total Transfers and Reserves	-		-		5,949,704	
Total Unrestricted Budget Expenditures/Transfers/Reserves	\$ 105,051,056		\$ 29,255,853		\$ 42,208,956	
Percent of Total Expenditures With Transfers and Reserves	57.81%		16.10%		23.23%	

South Texas College
Unrestricted Fund
Summary of Expenditures by Function and Classification

Budget for Fiscal Year 2019 - 2020

(Continued)

<u>Travel</u>	<u>Percent of Total</u>	<u>Capital</u>	<u>Percent of Total</u>	<u>Total</u>	<u>Percent of Total Budget W/O Trans/Reserv</u>	<u>Percent of Total Budget With Trans/Reserv</u>
\$ 1,172,946	48.06%	\$ 1,589,811	57.32%	\$ 88,153,007	50.15%	48.51%
37,484	1.54%	2,762	0.10%	1,252,250	0.71%	0.69%
422,579	17.31%	368,170	13.27%	20,231,063	11.51%	11.13%
255,059	10.45%	47,639	1.72%	13,689,782	7.79%	7.53%
380,610	15.59%	217,807	7.85%	25,852,313	14.71%	14.23%
171,994	7.05%	547,603	19.74%	26,602,210	15.13%	14.64%
2,440,672	100.00%	2,773,792	100.00%	175,780,625	100.00%	96.73%
1.39%		1.58%		100.00%		
-		-		3,000,000		
-		-		949,704		
-		-		2,000,000		
-		-		5,949,704		3.27%
\$ 2,440,672		\$ 2,773,792		\$ 181,730,329		100.00%
1.34%		1.52%		100.00%		

South Texas College
Unrestricted Fund
Summary of Expenditures by Function - Budget and Actual

Comparison of Previous Fiscal Years with Fiscal Year Ending August 31, 2020

Functions	FY '18 Budget (As Amended)	FY '18 Actual	FY '19 Budget (As Amended)	FY '19 Estimated*	FY '20 Budget
Instruction	\$ 92,170,395	\$ 79,819,400	\$ 88,995,951	\$ 80,326,308	\$ 88,153,007
Public Service	1,745,247	1,037,730	1,204,381	670,289	1,252,250
Academic Support	20,164,914	16,535,005	21,132,823	18,688,498	20,231,063
Student Services	12,861,746	11,104,869	13,487,059	11,762,775	13,689,782
Institutional Support	27,482,879	26,695,768	25,029,436	29,732,245	25,852,313
Operation & Maintenance - Plant	27,699,636	21,633,027	27,381,665	22,541,405	26,602,210
Total Expenditures by Function	182,124,817	156,825,799	177,231,315	163,721,520	175,780,625
Transfers and Reserves					
Transfer-Unexpended Construction Fund	6,000,000	6,000,000	5,000,000	5,000,000	3,000,000
Transfer-Renewals & Replacement Fund	1,000,000	1,000,000	1,000,000	1,000,000	-
Transfer-MTR Bond Series 2007	394,800	394,800	395,200	395,200	-
Transfer-ITED	564,000	380,668	1,184,985	1,184,985	949,704
Contingency	2,000,000	-	2,000,000	-	2,000,000
Total Transfers and Reserves	9,958,800	7,775,468	9,580,185	7,580,185	5,949,704
Total Unrestricted Expenditures by Function/Transfers/Reserves	\$ 192,083,617	\$ 164,601,267	\$ 186,811,500	\$ 171,301,705	\$ 181,730,329

* Amounts are estimated. Actual amounts will be available after fiscal year end and completion of audit.

South Texas College
Unrestricted Fund
Summary of Expenditures by Classification - Budget and Actual

Comparison of Previous Fiscal Years with Fiscal Year Ending August 31, 2020

Classifications	FY '18 Budget (As Amended)	FY '18 Actual	FY '19 Budget (As Amended)	FY '19 Estimated*	FY '20 Budget
Salaries	\$ 97,875,958	\$ 92,680,832	\$ 101,465,780	\$ 97,921,286	\$ 105,051,056
Benefits	27,994,526	26,263,518	29,074,300	28,265,765	29,255,853
Operating	45,016,274	30,073,533	42,518,769	31,067,541	36,259,252
Travel	2,220,890	1,650,069	2,378,838	1,862,352	2,440,672
Capital	9,017,169	6,157,847	1,793,628	4,604,576	2,773,792
Total Expenditures by Classification	182,124,817	156,825,799	177,231,315	163,721,520	175,780,625
Transfers and Reserves					
Transfer-Unexpended Construction Fund	6,000,000	6,000,000	5,000,000	5,000,000	3,000,000
Transfer-Renewals and Replacement Fund	1,000,000	1,000,000	1,000,000	1,000,000	-
Transfer-MTR Bond Series 2007	394,800	394,800	395,200	395,200	-
Transfer-ITED	564,000	380,668	1,184,985	1,184,985	949,704
Contingency	2,000,000	-	2,000,000	-	2,000,000
Total Transfers and Reserves	9,958,800	7,775,468	9,580,185	7,580,185	5,949,704
Total Unrestricted Expenditures by Classifications/Transfers/Reserves	\$ 192,083,617	\$ 164,601,267	\$ 186,811,500	\$ 171,301,705	\$ 181,730,329

* Amounts are estimated. Actual amounts will be available after fiscal year end and completion of audit.



SOUTH TEXAS COLLEGE

This page intentionally left blank.

**Unrestricted Fund Exp.
By Fun/Class/Orgn**

South Texas College
Unrestricted Fund
Detail of Expenditures by Function, Classification and Organization
Budget for Fiscal Year 2019 - 2020

Organization	Salaries	Benefits	Operating	Travel	Capital	Total
100016 Unallocated Funds			794,821			794,821
100018 Instructional Initiative	25,000	7,398	15,000			47,398
210005 Equipment-New Faculty/Programs			27,732			27,732
210006 Academic Affairs Travel				51,535		51,535
210009 Academic Advancement Reserve			12,069	944		13,013
210010 Student Employees	2,250	203				2,453
210014 Phi Theta Kappa - Honors			3,296	4,875		8,171
210027 Academic Assessment			6,050	7,000		13,050
210030 Academic Excellence Programs	170,379	50,415				220,794
211001 Distance Learning	885,349	245,352	70,000	23,000		1,223,701
211002 Distance Ed Instructional Tech			645,000		115,000	760,000
215001 Valley Scholars-Academic Affairs	80,048	7,204				87,252
221025 Business & Technology Travel				32,073		32,073
221099 Adj. Fac. Bus/Tech Pools	3,312,414	799,147				4,111,561
221101 Accounting	260,508	77,085	1,462	3,600		342,655

South Texas College
Unrestricted Fund
Detail of Expenditures by Function, Classification and Organization
Budget for Fiscal Year 2019 - 2020

Organization	Salaries	Benefits	Operating	Travel	Capital	Total
221102 Economics	408,880	120,988	2,777	6,000		538,645
221103 Business Administration	681,373	201,618	15,171	7,200		905,362
221104 Information Technology Program	583,186	172,566	89,193	10,376		855,321
221105 Computer Science	815,654	241,355	136,400	27,000		1,220,409
221106 Culinary Arts	271,972	77,905	69,322	1,405		420,604
221107 Paralegal	122,630	36,287	5,000	5,000		168,917
221108 Office Administration	297,518	88,036	23,587	2,155		411,296
221110 Human Resources Specialist	60,700	17,961	7,429	5,614		91,704
221111 Construction Supervision	5,000	1,480	14,000	2,169		22,649
221116 Law Enforcement	139,220	41,195	30,715	5,000		216,130
221119 Cybersecurity			10,000	5,000		15,000
221201 Mathematics	1,638,482	484,830	54,514	14,110		2,191,936
221301 Biology	2,728,254	803,688	308,316	25,000	50,408	3,915,666
221302 Engineering	232,880	65,821	107,000	8,000		413,701
221303 Physics	1,101,775	322,821	178,500	14,500		1,617,596

South Texas College
Unrestricted Fund
Detail of Expenditures by Function, Classification and Organization
Budget for Fiscal Year 2019 - 2020

Organization	Salaries	Benefits	Operating	Travel	Capital	Total
221304 Chemistry	824,702	240,836	208,700	14,905		1,289,143
221307 Agriculture			4,854	944		5,798
221308 Fire Science	114,047	33,747	37,694	2,264		187,752
221402 Automotive Technology	722,342	211,164	87,987	13,347		1,034,840
221404 Architel & Engrnrng Dsgn Tech (AEDT)	444,620	131,565	90,901	17,600		684,686
221405 Computer and Advanced Technologies	424,076	125,485	70,694	8,000		628,255
221407 HVACR	376,544	111,418	65,626	6,401		559,989
221409 Advanced Manufacturing Technology	401,808	118,895	66,380	18,047		605,130
221410 Mechatronics			20,488	4,000		24,488
221413 Electrician Assistant	286,839	84,876	35,903	6,000		413,618
221415 Welding	415,454	122,932	137,122	6,091		681,599
221418 Diesel Technology	348,504	103,123	38,239	7,557		497,423
222001 Developmental Math	1,207,186	357,208	32,000	19,183		1,615,577
222002 College Success	325,864	96,424	11,714	10,144		444,146
222003 Developmental Reading	583,492	172,657	12,753	12,000		780,902

South Texas College
Unrestricted Fund
Detail of Expenditures by Function, Classification and Organization
Budget for Fiscal Year 2019 - 2020

Organization	Salaries	Benefits	Operating	Travel	Capital	Total
222005 Developmental Exit Test			100,000			100,000
222008 Developmental English	541,499	160,231	23,740	9,604		735,074
222009 Book Royalties-Dev English			4,455	1,000		5,455
223001 Art	1,006,210	297,739	62,696	21,000		1,387,645
223002 Music	626,036	185,245	86,000	5,000		902,281
223003 Speech	862,451	255,201	7,166	10,929		1,135,747
223004 Drama	162,576	48,055	15,000	5,000		230,631
223005 Public Administration	60,290	17,840	7,500	3,000		88,630
223006 English	2,593,374	767,382	28,307	25,800		3,414,863
223007 Political Science	1,938,217	573,521	16,000	22,000		2,549,738
223008 World Language Department	587,696	173,899	17,234	12,700		791,529
223014 Wellness Center			12,000	1,000		13,000
223019 Philosophy	491,296	145,376	13,975	7,000		657,647
223020 History	1,402,782	415,085	13,885	18,903		1,850,655
223021 Child Development	383,037	113,343	16,405	6,000		518,785

South Texas College
Unrestricted Fund
Detail of Expenditures by Function, Classification and Organization
Budget for Fiscal Year 2019 - 2020

Organization	Salaries	Benefits	Operating	Travel	Capital	Total
223022 Education	486,317	143,903	8,138	10,047		648,405
223023 Criminal Justice	611,724	181,010	15,178	16,867		824,779
223024 Sociology	502,367	148,652	12,227	14,986		678,232
223025 Department of Psychological Science	1,157,880	342,619	20,303	10,767		1,531,569
223026 Social Work (SOCW)	125,571	37,156	5,330	3,000		171,057
223027 Kinesiology	464,237	136,622	19,829	9,276		629,964
223033 MV-Child Care & Development (Unres)	285,917	84,603				370,520
223036 Anthropology	58,103	17,193	5,173	1,776		82,245
223038 Sign Language AAS	120,321	35,603	5,000	4,441		165,365
223039 LASS Travel				112,214		112,214
223099 Adj. Fac. LASS Pools	5,084,808	1,075,354				6,160,162
224002 Occupational Therapy	328,715	93,150	17,222	7,198		446,285
224003 Emergency Medical Technology	849,827	246,320	105,300	15,310	62,500	1,279,257
224004 Physical Therapy	392,967	112,162	20,800	8,000		533,929
224005 Associate Degree Nursing	2,753,417	814,744	108,514	51,777		3,728,452

South Texas College
Unrestricted Fund
Detail of Expenditures by Function, Classification and Organization
Budget for Fiscal Year 2019 - 2020

Organization	Salaries	Benefits	Operating	Travel	Capital	Total
224006 Patient Care Assistant	574,280	169,933	27,244	9,000		780,457
224007 Medical Asst Technology	178,813	52,911	11,534	3,960		247,218
224008 Health Information	209,899	62,110	11,646	9,838		293,493
224009 Medical Information	70,510	20,864	11,430	4,338		107,142
224010 Pharmacy Technology	237,646	70,322	70,000	5,322	160,000	543,290
224011 Radiologic Technology	352,389	103,244	60,000	9,000		524,633
224018 Vocational Nursing	1,726,726	506,824	69,204	14,080		2,316,834
224025 Respiratory Therapy	290,858	81,946	44,860	4,681		422,345
224031 Diagnostic Sonograph	189,123	55,963	56,000	5,400		306,486
224033 NAH Travel				38,819		38,819
224043 i3 HEAL2 Contract			12,274	10,050		22,324
224044 Bachelor's of Nursing	162,852	48,189				211,041
224050 College Success Healthcare	314,586	93,087	9,150	7,000		423,823
224055 Clinical Simulation	247,604	73,266	75,733	17,800		414,403
224099 Adj. Fac. NAH Pools	1,509,199	315,090				1,824,289

South Texas College
Unrestricted Fund
Detail of Expenditures by Function, Classification and Organization
Budget for Fiscal Year 2019 - 2020

Organization	Salaries	Benefits	Operating	Travel	Capital	Total
225007 BAT/BAS	66,813	19,770	44,020	24,043		154,646
225017 BAS Books & Resource			39,226			39,226
225018 BAS Organizational Leadership BASOL	177,442	52,506	7,000	10,000		246,948
225030 Computer Information Tech Prg -CITP	112,390	33,257	7,000	5,000		157,647
225033 Medical Health Srvc Mngmt - MHSM	163,117	48,267	10,000	5,000		226,384
225036 Technology Management Prg - TMGT	132,675	39,259	7,000	5,000		183,934
226001 Math & Science Travel				67,468		67,468
226099 Adj. Fac. Math/Science & BAT Pools	4,493,048	908,782				5,401,830
229099 Adj. Fac. VPAA Pools	40,084	11,861				51,945
400110 Unemployment Insurance-Instruction		115,019				115,019
436121 FFE Unallocated - Instruction					868,000	868,000
500010 Technology Renewal Fund			645,000			645,000
500016 Technology Resources Fund - Instr.			439,169			439,169
500021 Information Svcs & Planning - Inst	158,216	45,725	13,410	8,381		225,732
510014 IT PM, Risk & Security-Instruction	255,802	75,692	286,968			618,462

South Texas College
Unrestricted Fund
Detail of Expenditures by Function, Classification and Organization
Budget for Fiscal Year 2019 - 2020

Organization	Salaries	Benefits	Operating	Travel	Capital	Total
511002 Client Services-Instruction	296,320	87,285	252,438			636,043
512002 Information Security - Instruction	113,427	33,563	286,611	11,734		445,335
520006 Systems & Networking-Instruction	586,846	173,646	1,391,773		333,903	2,486,168
520011 Information Technology-Instruction	200,616	59,363	53,941	26,819		340,739
520016 Applications Developmnt-Instruction	964,917	285,520	514,019			1,764,456
520021 Technology Support - Instruction	571,597	162,187	65,842	20,115		819,741
600007 CPWE - State	1,257,130	283,079	236,239	27,464		1,803,912
Instruction	\$59,831,510	\$16,484,223	\$9,074,517	\$1,172,946	\$1,589,811	\$88,153,007

South Texas College
Unrestricted Fund
Detail of Expenditures by Function, Classification and Organization
Budget for Fiscal Year 2019 - 2020

Organization	Salaries	Benefits	Operating	Travel	Capital	Total
223009 Art Speakers			3,962			3,962
223013 Women Studies			6,933			6,933
223018 Folklorico Dance			25,000	5,000		30,000
400111 Unemployment Insurance-Public Svc		5,676				5,676
450050 RCPSE	99,000	29,294	50,000			178,294
500017 Technology Resources Fund - Pub Ser			3,633			3,633
500022 Information Svcs & Planning - PubS	1,297	374	111	69		1,851
510015 IT PM, Risk & Security-Public Srvc	1,718	508	2,374			4,600
511003 Client Services-Public Service	2,430	716	2,088			5,234
512003 Information Security - Publ Srvc	930	275	2,371	97		3,673
520007 Systems & Networking-Public Service	4,815	1,423	11,513		2,762	20,513
520012 Information Technology-Public Srvc	1,646	486	446	222		2,800
520017 Applications Develop-Public Service	7,299	2,159	4,252			13,710
520022 Technology Support - Public Srvc	4,689	1,327	545	166		6,727
600002 Workforce Develop & External Affair	1					1

South Texas College
Unrestricted Fund
Detail of Expenditures by Function, Classification and Organization
Budget for Fiscal Year 2019 - 2020

Organization	Salaries	Benefits	Operating	Travel	Capital	Total
610030 CPWE - Non State	128,750	11,588	16,986			157,324
610031 CPWE - Conferences			62,312	2,430		64,742
610035 CPWE - New Contracts	97,398	8,766	59,554	20,000		185,718
610039 CPWE - Carryover	180,000	16,200	248,800	5,000		450,000
610040 Alternative Teacher Certification	77,527	12,152	12,680	4,500		106,859
Public Service	\$607,500	\$90,944	\$513,560	\$37,484	\$2,762	\$1,252,250

South Texas College
Unrestricted Fund
Detail of Expenditures by Function, Classification and Organization
Budget for Fiscal Year 2019 - 2020

Organization	Salaries	Benefits	Operating	Travel	Capital	Total
100002 Professional Development			65,000			65,000
141007 Police Academy Non-Credit	10,000	900				10,900
141008 New Program Start Up Non-Credit	7,000	630				7,630
210002 Academic Affairs _ VP Admin	190,013	53,761	11,387	8,429		263,590
210008 Academic Affairs Support			50,799	7,962		58,761
210031 Academic Advancement	393,110	116,321	11,814	11,238		532,483
210050 Temp Agency-Academic Affairs			92,160			92,160
212002 Director of ECHS			3,000	3,500		6,500
212004 Academies & High School Prj	254,490	75,305	2,675	5,900		338,370
212005 DE Medical Science Academy			10,833	13,893		24,726
212008 DE Engineering Academy			7,222	9,262		16,484
212012 Dual Credit Pathways	518,309	153,368	6,412	10,391		688,480
212015 DE Computer Science Academy			10,833	13,893		24,726
212020 DE Criminal Justice - Pecan			3,611	4,631		8,242
212100 Dual Credit Programs	375,549	108,514	25,249	14,891		524,203

South Texas College
Unrestricted Fund
Detail of Expenditures by Function, Classification and Organization
Budget for Fiscal Year 2019 - 2020

Organization	Salaries	Benefits	Operating	Travel	Capital	Total
213001 Curriculum & Student Learning	566,559	167,646	84,750	25,800		844,755
214001 Professional & Organizational Dev	340,106	93,410	126,861	15,576		575,953
221001 Div of Busines Public Safety & Tech	411,997	113,746	7,745	15,000		548,488
221002 Division of Math & Science			20,749	17,817		38,566
222004 Adjunct Faculty Pecan Campus			30,845			30,845
223010 Div of Social & Behavioral Sciences			29,207	13,110		42,317
223012 Div Liberal Arts & Social Sciences	504,050	149,147	42,450	6,553		702,200
223032 Fine & Performing Arts			3,000			3,000
223037 Humanities			1,500	1,500		3,000
224013 Div Nursing & Allied Health	699,531	196,825	35,200	10,500		942,056
225005 Div. of Math, Science & BA Programs	551,546	163,203	29,707	14,367		758,823
225012 Professional Devel Instruct Initiat			20,499	12,643		33,142
225300 University Relations			8,000	6,000		14,000
400112 Unemployment Insurance-Acad Supp		32,981				32,981
436122 FFE Unallocated - Academic Support					75,000	75,000

South Texas College
Unrestricted Fund
Detail of Expenditures by Function, Classification and Organization
Budget for Fiscal Year 2019 - 2020

Organization	Salaries	Benefits	Operating	Travel	Capital	Total
450049 RCPSE - Academic Support			35,000			35,000
500018 Technology Resources Fund - Aca Sup			36,944			36,944
500023 Information Svcs & Planning - AcaS	13,308	3,846	1,128	705		18,987
510016 IT PM, Risk & Security-Academ Suppt	17,610	5,211	24,141			46,962
511004 Client Services-Academic Support	24,927	7,345	21,236			53,508
512004 Information Security - Aca Support	9,541	2,823	24,110	987		37,461
520008 Systems & Networking-Academic Suppt	49,362	14,606	117,080		28,089	209,137
520013 Information Technology-Academic Spp	16,876	4,994	4,538	2,256		28,664
520018 Applications Develop-Academic Suppt	74,828	22,140	43,241			140,209
520023 Technology Support - Academic Spprt	48,079	13,643	5,539	1,692		68,953
530001 Library Services	146,935	43,477	71,380	16,000		277,792
530002 Library Acquisition	630,014	177,770	441,103	6,000	200,850	1,455,737
530005 Library Automation			98,043	5,000		103,043
530006 Library Information Commons			44,300			44,300
530008 BAT and Support Materials			49,434		33,231	82,665

South Texas College
Unrestricted Fund
Detail of Expenditures by Function, Classification and Organization
Budget for Fiscal Year 2019 - 2020

Organization	Salaries	Benefits	Operating	Travel	Capital	Total
530010 Library Art Gallery	56,824	14,343	37,850	6,000	1,000	116,017
530012 Library Programming & Community Svc			27,925	5,700		33,625
530013 Library Public Services	1,755,039	455,784	46,850	22,000		2,279,673
540001 Educational Technologies	1,528,846	426,947	288,575	35,000		2,279,368
540005 Learning Commons and Open Labs	1,416,962	384,868	379,139	33,340		2,214,309
540008 Educ Tech Maintenance & Replacement			569,650		30,000	599,650
560001 Office of Strategic Initiatives	129,406	38,291	193,400	23,000		384,097
570001 Centers for Learning Excellence	837,740	183,910	238,389	22,043		1,282,082
570003 CLE Online Tutoring			139,082			139,082
570004 Center for Learning Excellence_Pcan	309,261	27,833				337,094
570005 Center for Learning Excellence_MV	125,204	11,268				136,472
570006 Center for Learning Excellence_NAH	74,146	6,673				80,819
570007 Center for Learning Excellence_Tech	97,550	8,780				106,330
570008 Cntr for Learning Excellence_Starr	91,286	8,216				99,502

South Texas College
Unrestricted Fund
Detail of Expenditures by Function, Classification and Organization
Budget for Fiscal Year 2019 - 2020

Organization	Salaries	Benefits	Operating	Travel	Capital	Total
570009 CLE _ Supplemental Instruction	180,000	16,200				196,200
<i>Academic Support</i>	<i>\$12,456,004</i>	<i>\$3,304,725</i>	<i>\$3,679,585</i>	<i>\$422,579</i>	<i>\$368,170</i>	<i>\$20,231,063</i>

South Texas College
Unrestricted Fund
Detail of Expenditures by Function, Classification and Organization
Budget for Fiscal Year 2019 - 2020

Organization	Salaries	Benefits	Operating	Travel	Capital	Total
215003 Valley Scholars-Student Services			22,476	4,907		27,383
223044 Center for Mexican American Studies	25,248	7,471	20,810			53,529
300002 Graduation			216,720			216,720
300003 Student Affairs & Enrollment Mgt	257,543	72,937	109,751	9,148		449,379
300050 Temp Agency-Student Affairs & Enrol			12,420			12,420
310012 Student Financial Services	1,580,833	454,471	71,171	37,839		2,144,314
312102 Admin Allowance-Pell			80,000			80,000
312104 Admin Allowance-Veterans			4,500			4,500
312106 Admin Allowance-FWS			70,000			70,000
320001 Admissions & Records	1,206,837	330,136	95,750	13,748		1,646,471
320002 Dual2Dgree	495,078	146,262	38,871	20,248		700,459
320003 College Connections	847,997	233,711	149,171	20,249		1,251,128
320012 Office of Enrollment Services	181,244	53,630	15,000	10,000		259,874
320020 Student Case Mgmt. Service			81,000			81,000
330003 Advising	1,015,237	294,959	34,171	11,248		1,355,615

South Texas College
Unrestricted Fund
Detail of Expenditures by Function, Classification and Organization
Budget for Fiscal Year 2019 - 2020

Organization	Salaries	Benefits	Operating	Travel	Capital	Total
330004 Counseling & Disability Services	1,081,507	298,707	94,382	19,273		1,493,869
331001 Career & Employer Services	454,162	93,207	29,671	12,248		589,288
340001 Special Programs	39,253	11,615	4,171	4,248		59,287
350001 Student Affairs	380,207	100,629	139,871	24,400		645,107
350030 Judicial Affairs	399,245	116,903	38,500	16,000		570,648
350031 Behavioral Intervention Team			42,000	20,000		62,000
350032 Student Activities & Wellness			20,000		12,000	32,000
360001 Student Assessment Center	604,041	174,283	136,236	24,346		938,906
360005 TSI Examination			71,747			71,747
360009 Student Assessment HESI A2 Exam			44,000			44,000
400113 Unemployment Insurance-Stu Svcs		16,826				16,826
500019 Technology Resources Fund - Stu Ser			46,875			46,875
500024 Information Svcs & Planning - StuS	16,895	4,883	1,431	895		24,104
510017 IT PM, Risk & Security-Studen Svcs	22,355	6,616	30,630			59,601
511005 Client Services-Student Services	31,642	9,321	26,944			67,907

South Texas College
Unrestricted Fund
Detail of Expenditures by Function, Classification and Organization
Budget for Fiscal Year 2019 - 2020

Organization	Salaries	Benefits	Operating	Travel	Capital	Total
512005 Information Security - Stu Srvc	12,113	3,585	30,591	1,252		47,541
520009 Systems & Networking-Student Srvc	62,668	18,544	148,551		35,639	265,402
520014 Information Technology-Student Srvc	21,424	6,340	5,757	2,863		36,384
520019 Applications Develop-Student Srvc	94,996	28,106	54,864			177,966
520024 Technology Support - Student Srvc	61,040	17,317	7,028	2,147		87,532
<i>Student Services</i>	<i>\$8,891,565</i>	<i>\$2,500,459</i>	<i>\$1,995,060</i>	<i>\$255,059</i>	<i>\$47,639</i>	<i>\$13,689,782</i>

South Texas College
Unrestricted Fund
Detail of Expenditures by Function, Classification and Organization
Budget for Fiscal Year 2019 - 2020

Organization	Salaries	Benefits	Operating	Travel	Capital	Total
100003 Institutional Member			130,000			130,000
100004 Office of President	710,321	210,183	36,763	10,800		968,067
100005 Board of Trustees			18,000	22,500		40,500
100014 Institutional Advancement	200,000	59,181	9,000			268,181
100030 Redistricting			29,000			29,000
100070 External Affairs	128,399	37,993	15,000	25,000		206,392
120000 Public Relations/Marketing	1,186,313	335,999	330,962	14,000		1,867,274
120001 Catalogs & Brochures			60,000			60,000
120002 Printing Department			30,000			30,000
120016 Advertising			1,089,000			1,089,000
120022 PR-Promotional/Marketing			53,000			53,000
141002 Grant Dev't., Mgmt., and Compliance	550,366	162,853	54,377	11,100		778,696
141003 Community Engagement & Wrkforce Dev			3,500	4,000		7,500
141004 Comm Engagement & Ext Affairs (AtD)			22,180	15,750		37,930
210033 Academic Adv Printed Marketing-AVP			14,853			14,853

South Texas College
Unrestricted Fund
Detail of Expenditures by Function, Classification and Organization
Budget for Fiscal Year 2019 - 2020

Organization	Salaries	Benefits	Operating	Travel	Capital	Total
210505 Academic Grants & Projects Officer			4,000	8,000		12,000
217101 Mid Valley Campus	308,832	91,383	28,240	2,264		430,719
217301 Starr County Campus	244,336	72,298	14,308	3,743		334,685
217401 Technology Campus			15,000	5,000		20,000
221010 Instr Printed Marketing-M&S and BAT			24,853			24,853
221422 Instr Printed Marketing - Tech			4,954			4,954
223055 Instr Printed Marketing - LASS			8,500			8,500
224024 Instr Printed Marketing - NAH			4,954			4,954
400001 Legal Services			305,000			305,000
400002 Audit Services			140,000			140,000
400003 Finance & Administrative Services	530,240	150,438	75,000	13,000		768,678
400013 Records Retention			50,000			50,000
400030 Election			140,000			140,000
400032 Investment Advisor			80,000			80,000
400034 HR Employee Training			50,000			50,000

South Texas College
Unrestricted Fund
Detail of Expenditures by Function, Classification and Organization
Budget for Fiscal Year 2019 - 2020

Organization	Salaries	Benefits	Operating	Travel	Capital	Total
400060 Internal Audits	139,689	41,334	10,000	13,500		204,523
400090 Temp Agency-Finance & Adm Svcs			495,420			495,420
400114 Unemployment Insurance-Instit Supp		37,151				37,151
410005 Armored Car Svcs			33,113			33,113
410011 Fees and Other Charges			10,000			10,000
410012 Bond/Arbitrage/Disclosure			12,359			12,359
410013 Business Office	2,319,319	682,912	370,840	39,000	70,000	3,482,071
410015 Credit Card Charges			383,302			383,302
410050 Cashiers Office	1,233,689	347,677	115,000	18,000		1,714,366
410098 Uncollectible Accounts - 2020			1,696,562			1,696,562
420001 Postage			205,000			205,000
420002 Copy Center			45,000			45,000
420006 Loss Fund			75,000			75,000
420007 Purchasing	893,248	261,225	97,000	8,547		1,260,020
420009 Asset Management			25,000			25,000

South Texas College
Unrestricted Fund
Detail of Expenditures by Function, Classification and Organization
Budget for Fiscal Year 2019 - 2020

Organization	Salaries	Benefits	Operating	Travel	Capital	Total
430002 Institutional Moves			125,000			125,000
431010 Student Transportation Services	256,884	76,011	375,571		95,000	803,466
450001 General Services	67,418	19,949				87,367
450005 Vehicle Maintenance			9,000			9,000
460001 Human Resources	1,568,134	460,844	411,153	39,700		2,479,831
480001 Accountability, Risk, and Complian	379,355	112,252	22,000	20,000		533,607
490001 Office of Institutional Equity	186,385	55,151	67,000	13,000		321,536
500001 Technology Resource Fund - Institut			69,455			69,455
500002 Information Services & Planning	25,012	7,229	2,121	1,326		35,688
510005 IT PM, Risk and Security	33,097	9,794	45,384			88,275
511001 Client Services	46,841	13,798	39,924			100,563
512001 Information Security	17,931	5,305	45,327	1,857		70,420
520002 Systems and Networking	92,770	27,448	220,112		52,807	393,137
520003 Information Technology	31,712	9,384	8,532	4,242		53,870
520004 Applications Development	140,629	41,613	81,292			263,534

South Texas College
Unrestricted Fund
Detail of Expenditures by Function, Classification and Organization
Budget for Fiscal Year 2019 - 2020

Organization	Salaries	Benefits	Operating	Travel	Capital	Total
520005 Technology Support	90,356	25,641	10,412	3,181		129,590
540010 Technology Projects			39,000			39,000
550001 Research and Analytical Services	502,399	145,469	62,500	42,500		752,868
550002 Inst'l Effectiveness and Assessment	318,542	92,026	18,725	17,600		446,893
550003 Inst'l Research & Effectiveness	155,170	45,915	5,000	13,000		219,085
560002 Accreditation			62,500	10,000		72,500
610032 CPWE - PR & Advertising			55,640			55,640
410017 Hidalgo Appraisal/Collection Fee			756,656			756,656
410018 Starr Appraisal/Collection Fee			311,709			311,709
<i>Institutional Support</i>	<i>\$12,357,387</i>	<i>\$3,638,456</i>	<i>\$9,258,053</i>	<i>\$380,610</i>	<i>\$217,807</i>	<i>\$25,852,313</i>

South Texas College
Unrestricted Fund
Detail of Expenditures by Function, Classification and Organization
Budget for Fiscal Year 2019 - 2020

Organization	Salaries	Benefits	Operating	Travel	Capital	Total
400005 Insurance			1,100,000			1,100,000
400115 Unemployment Insurance-O&M		15,510				15,510
420003 Distribution Center	154,382	45,681	20,000			220,063
420004 Central Receiving	498,623	147,543	30,000	2,000		678,166
420005 Inventory Control			13,000			13,000
430001 Dir Fac Planning & Construction	830,091	243,155	122,358	31,200		1,226,804
430012 Physical Education Facility Rental			37,500			37,500
430015 Lease-NAH El Milagro Parking Lot			1,563			1,563
430017 Custodial Fees-La Joya Teach Site			25,000			25,000
430018 New Furniture			150,000			150,000
430019 Lease-City of Edinburg Fire Dept			25,000			25,000
430022 Lease - PSJA CCTA			90,000			90,000
436120 FFE Unallocated - O&M					243,000	243,000
450002 Safety & Security	1,412,288	417,894	146,541	11,000		1,987,723
450003 Facilities Operations & Maintenance	528,197	156,291	25,000	8,000		717,488

South Texas College
Unrestricted Fund
Detail of Expenditures by Function, Classification and Organization
Budget for Fiscal Year 2019 - 2020

Organization	Salaries	Benefits	Operating	Travel	Capital	Total
450004 Custodial	3,082,605	909,875	588,000	15,000		4,595,480
450006 Facility Maintenance	2,228,479	659,407	1,352,000	40,000		4,279,886
450007 Grounds Maintenance			735,000			735,000
450008 Mechanical System Maintenance			800,000			800,000
450009 Security & Emergency Preparedness			173,840			173,840
450011 Util - 2501 Pecan			54,000			54,000
450016 Util - Pecan Campus			2,229,294			2,229,294
450019 Util - Mid Valley Campus			1,001,851			1,001,851
450020 Util - Technology Campus			681,765			681,765
450021 Util - Starr Campus			697,019			697,019
450022 Util - NAH Campus			580,688			580,688
450023 Util - Pecan Plaza			62,000			62,000
450025 Utilities - Pharr RCPSE			53,858			53,858
450035 Repair and Maintenance			100,000			100,000
450038 Environmental			140,000	10,000		150,000

South Texas College
Unrestricted Fund
Detail of Expenditures by Function, Classification and Organization
Budget for Fiscal Year 2019 - 2020

Organization	Salaries	Benefits	Operating	Travel	Capital	Total
450051 Campus Police	1,632,064	482,930	197,187	20,000	259,803	2,591,984
450060 Department of Public Safety	134,189	39,707	62,690	25,800		262,386
500020 Technology Resources Fund - O&M			58,924			58,924
500025 Information Svcs & Planning - O&M	21,236	6,137	1,799	1,124		30,296
510018 IT PM, Risk & Security - O&M	28,101	8,316	38,503			74,920
511006 Client Services-O&M	39,775	11,716	33,870			85,361
512006 Information Security - O&M	15,225	4,505	38,455	1,573		59,758
520010 Systems & Networking - O&M	78,774	23,310	186,735		44,800	333,619
520015 Information Technology-O&M	26,929	7,968	7,236	3,598		45,731
520020 Applications Development - O&M	119,409	35,330	68,967			223,706
520025 Technology Support - O&M	76,723	21,771	8,834	2,699		110,027
Operation and Maintenance	\$10,907,090	\$3,237,046	\$11,738,477	\$171,994	\$547,603	\$26,602,210

South Texas College
Unrestricted Fund
Detail of Expenditures by Function, Classification and Organization
Budget for Fiscal Year 2019 - 2020

Organization	Salaries	Benefits	Operating	Travel	Capital	Total
100006 Contingency-Reserve			2,000,000			2,000,000
100009 Transfer-Building Fund			3,000,000			3,000,000
400050 Transfer-ITED			949,704			949,704
<i>Transfers and Reserves</i>	<i>\$0</i>	<i>\$0</i>	<i>\$5,949,704</i>	<i>\$0</i>	<i>\$0</i>	<i>\$5,949,704</i>
Total Expenditures	\$105,051,056	\$29,255,853	\$42,208,956	\$2,440,672	\$2,773,792	\$181,730,329



SOUTH TEXAS COLLEGE

This page intentionally left blank.

Unrestricted Fund Capital Expenditures

South Texas College
Unrestricted Fund
Summary of Capital Expenditures by Function and Organization

Budget for Fiscal Year 2020

Organization Name	Organization Code	Total
Instruction		
Distance Ed Instructional Tech	211002	\$ 115,000
Biology	221301	50,408
Emergency Medical Technology	224003	62,500
Pharmacy Technology	224010	160,000
FEE Unallocated - Instruction	436121	868,000
Technology-Instruction	Multiple	333,903
Total Instruction		1,589,811
Public Service		
Technology-Public Service	Multiple	2,762
Total Public Service		2,762
Academic Support		
FEE Unallocated - Academic Support	436122	75,000
Library Acquisition	530002	200,850
BAT and Support Materials	530008	33,231
Library Art Gallery	530010	1,000
Educ Tech Maintenance & Replacement	540008	30,000
Technology-Academic Support	Multiple	28,089
Total Academic Support		368,170
Student Services		
Student Activities & Wellness	350032	12,000
Technology-Student Services	Multiple	35,639
Total Student Services		47,639
Institutional Support		
Business Office	410013	70,000
Student Transportation Services	431010	95,000
Technology-Institutional Support	Multiple	52,807
Total Institutional Support		217,807
Operation & Maintenance		
FEE Unallocated - O & M	436120	243,000
Campus Police	450051	259,803
Technology-Operation & Maintenance	Multiple	44,800
Total Operation & Maintenance		547,603
Total Capital Expenditures		\$ 2,773,792

South Texas College
Unrestricted Fund
Detail of Capital Expenditures by Function and Organization

Budget for Fiscal Year 2019 - 2020

Organization Name	Organization Code	Item	Qty	Unit Cost	Total Cost
Instruction					
Distance Ed Instructional Tech	211002	Virtual teaching environment training room equipment	1	\$ 115,000	\$ 115,000
Biology	221301	Nanodrop spectrophotometer	1	9,700	9,700
		Standing centrifuge	1	9,394	9,394
		BioRad Gel Doc EZ imager	2	8,445	16,890
		Water purification system	1	8,717	8,717
		Flake ice machine	1	5,707	5,707
Emergency Medical Technology	224003	Cardiac monitor	1	26,500	26,500
		Manikin	1	36,000	36,000
Pharmacy Technology	224010	Scriptpro CRS	1	113,000	113,000
		Scriptpro central retail store package	1	47,000	47,000
FFE Unallocated - Instruction	436121	Truck	1	30,000	30,000
		Self-contained breathing apparatus	1	60,000	60,000
		Anatomy table	1	80,000	80,000
		Breathing simulator	1	85,000	85,000
		Pediatric manikin	1	54,000	54,000
		Virtual firing range	1	250,000	250,000
		Robotics	1	144,000	144,000
		Lab table retro	1	50,000	50,000
		Pharmacy	1	115,000	115,000
Technology-Instruction ⁽¹⁾	Multiple	Refer to Technology by Function ^{*(2)}	1	333,903	333,903
Total Instruction					\$ 1,589,811
Public Service					
Technology-Public Service ⁽¹⁾	Multiple	Refer to Technology by Function ^{*(2)}	1	\$ 2,762	\$ 2,762
Total Public Service					\$ 2,762
Academic Support					
FFE Unallocated - Academic Support	436122	Library signage	1	\$ 35,000	\$ 35,000
		Food carts	1	10,000	10,000
		Store front	1	30,000	30,000
Library Acquisition	530002	Books and videos	1	200,850	200,850
BAT and Support Materials	530008	BAT-books and videos	1	33,231	33,231
Library Art Gallery	530010	Art collection items and donations	1	1,000	1,000
Educ Tech Maintenance & Replacement	540008	Special venue projectors	2	15,000	30,000
Technology-Academic Support ⁽¹⁾	Multiple	Refer to Technology by Function ^{*(2)}	1	28,089	28,089
Total Academic Support					\$ 368,170
Student Services					
Student Activities & Wellness	350032	Intramurals outdoor storage shed (Starr Campus)	1	\$ 6,000	\$ 6,000
		Gazebo outdoor storage shed (MV Campus)	1	6,000	6,000
Technology-Student Services ⁽¹⁾	Multiple	Refer to Technology by Function ^{*(2)}	1	35,639	35,639
Total Student Services					\$ 47,639
Institutional Support					
Business Office	410013	AP electronic approval software	1	\$ 70,000	\$ 70,000
Student Transportation Services	431010	Replacement bus	1	95,000	95,000
Technology-Institutional Support ⁽¹⁾	Multiple	Refer to Technology by Function ^{*(2)}	1	52,807	52,807
Total Institutional Support					\$ 217,807

South Texas College
Unrestricted Fund
Detail of Capital Expenditures by Function and Organization

Budget for Fiscal Year 2019 - 2020

Organization Name	Organization Code	Item	Qty	Unit Cost	Total Cost
Operation & Maintenance					
FEE Unallocated - O & M	436120	Boom truck	1	\$ 150,000	\$ 150,000
		Chiller filtration	1	93,000	93,000
Campus Police	450051	Police vehicle	1	35,100	35,100
		Police ATV's	2	16,200	32,400
		Emergency equipment for vehicle and ATV's	1	42,303	42,303
		Parking permit and citation software	1	150,000	150,000
Technology-Operation & Maintenance ⁽¹⁾	Multiple	Refer to Technology by Function ^{*(2)}	1	44,800	44,800
Total Operation & Maintenance					\$ 547,603
Total Capital Expenditures					\$ 2,773,792
(1) Technology					
Systems and Networking	520002	Datacenter enterprise switches replacements/additions	1	\$ 95,000	\$ 95,000
		Datacenter equipment replacements/additions	1	65,000	65,000
		New Oracle software licenses (DB, Golden Gate,OAS)	1	88,000	88,000
		Network firewall upgrade	1	250,000	250,000
Total Technology					\$ 498,000
(2) Technology by Function*					
Technology-Instruction	Multiple	Various-Technology	1	Various	\$ 333,903
Technology-Public Service	Multiple	Various-Technology	1	Various	2,762
Technology-Academic Support	Multiple	Various-Technology	1	Various	28,089
Technology-Student Services	Multiple	Various-Technology	1	Various	35,639
Technology-Institutional Support	Multiple	Various-Technology	1	Various	52,807
Technology-Operation & Maintenance	Multiple	Various-Technology	1	Various	44,800
Total Technology by Function					\$ 498,000



SOUTH TEXAS COLLEGE

This page intentionally left blank.

Auxiliary Fund

South Texas College
Auxiliary Fund
Detail of Revenues by Source

Comparison of Previous Fiscal Years with Fiscal Year Ending August 31, 2020

Revenue Source	FY '18 Budget	FY '19 Budget	FY '20 Budget
Bookstore	\$ 500,000	\$ 500,000	\$ 490,000
Catering Services	7,000	500	-
Interest Income	7,295	18,000	24,000
Food Service-Mid Valley	131,866	269,644	270,456
Food Service-NAH	18,720	251,281	218,877
Food Service-Pecan	738,662	581,423	625,205
Food Service-Tech	110,752	46,300	46,300
General Conferences	135,000	135,000	135,000
MV-Child Care & Development	364,475	364,475	364,475
Non Public Fund	881,843	838,515	744,149
Professional Development Conferences	80,000	80,000	80,000
Self Supporting Conferences	83,225	90,857	85,455
Student Activity Fee*	1,686,334	1,651,835	1,651,835
Student Copier	6,300	2,500	1,200
Vending Machines	139,000	140,000	155,000
Total Revenues	\$ 4,890,472	\$ 4,970,330	\$ 4,891,952

* Based on Mandatory Student Activity Fee of \$4 per credit hour.

South Texas College
Auxiliary Fund
Detail of Expenditures by Classification and Organization
Budget Fiscal Year Ending August 31, 2020

Organization Name	Salaries	Benefits	Operating	Travel	Capital	Scholarship	Total
Admin-Assist VP Academic Affairs	\$ -	\$ -	\$ 161	\$ -	\$ -	\$ -	\$ 161
Admin-Board of Trustees	-	-	3,152	-	-	-	3,152
Admin-Center for Learn Excellence	-	-	1,001	-	-	-	1,001
Admin-Curriculum & Student Learning	-	-	250	-	-	-	250
Admin-Distance Education	-	-	1,702	-	-	-	1,702
Admin-Enrollment Svc	-	-	1,737	-	-	-	1,737
Admin-Executive	-	-	3,602	-	-	-	3,602
Admin-Graduation	-	-	14,214	-	-	-	14,214
Admin-HR Employee Training & Recruit	-	-	1,671	-	-	-	1,671
Admin-Student Affairs	-	-	3,000	-	-	-	3,000
Admin-Valley Scholars	-	-	3,152	-	-	-	3,152
Admin-VP Academic Affairs	-	-	4,229	-	-	-	4,229
Admin-VP Finance & Admin Svcs	-	-	4,229	-	-	-	4,229
Admin-VP Info Svcs & Planning	-	-	4,229	-	-	-	4,229
Admin-VP Stud Svcs & Develop	-	-	4,229	-	-	-	4,229
Admin-Workforce Development	-	-	2,453	-	-	-	2,453
AEDT Program Events	-	-	3,215	-	-	-	3,215
Alumni and Friends	-	-	2,502	-	-	-	2,502
Art Gallery - Library Projects	-	-	255	-	-	-	255
Auxiliary Business Operations	40,000	12,000	-	-	-	-	52,000
Ballet Folklorico Dance Carryover	-	-	38	-	-	-	38
Ballet Folklorico Dance Company	-	-	19,475	-	-	-	19,475
Binational Innovation Conference	-	-	1,763	-	-	-	1,763
Career Expo	-	-	2,721	-	-	-	2,721
Child Dev. Conference Fall &	-	-	12,415	600	-	-	13,015
Communication Arts Festival - AUX	-	-	33	-	-	-	33
Community Engagement	-	-	1,501	-	-	-	1,501
CPWE - Auxiliary	-	-	1,000	-	-	-	1,000
Critical Thinking Conf - ADN/CHOC	-	-	3,017	-	-	-	3,017
Dr. Godinez Memorial Fund	-	-	2,103	-	-	-	2,103
Drama Theater	-	-	5,973	-	-	-	5,973
Empl Spouse/Depend Waiver	-	-	148,488	-	-	-	148,488
Employee Appreciation & Recognition	-	-	2,502	-	-	-	2,502
External Affairs	-	-	2,000	-	-	-	2,000
Food Service-Mid Valley	110,276	33,387	126,793	-	-	-	270,456
Food Service-NAH	74,905	16,172	127,800	-	-	-	218,877
Food Service-Pecan	295,572	73,763	250,870	5,000	-	-	625,205
Food Service-Tech	-	-	46,300	-	-	-	46,300
General Conferences	-	-	135,000	-	-	-	135,000
IME-BECAS Scholarship STC Matching	-	-	-	-	-	2,200	2,200
Institutional Grant	-	-	-	-	-	1,300	1,300
IS&P Focus Groups	-	-	50	-	-	-	50
ITED Conferences	-	-	12,718	-	-	-	12,718
Learning & Engagement Initiatives	-	-	500	-	-	-	500
Library Art Gallery Events	-	-	1,251	-	-	-	1,251
Library Events	-	-	1,501	-	-	-	1,501
MV-Child Care & Development	211,269	92,958	58,248	2,000	-	-	364,475

South Texas College
Auxiliary Fund
Detail of Expenditures by Classification and Organization
Budget Fiscal Year Ending August 31, 2020

Organization Name	Salaries	Benefits	Operating	Travel	Capital	Scholarship	Total
Non Public Fund	-	-	744,149	-	-	-	744,149
Other Reserve	-	-	248,833	-	-	-	248,833
Phi Theta Kappa	-	-	500	-	-	-	500
Philosophy Across the Americas	-	-	951	-	-	-	951
PR-College Events	-	-	31,048	-	-	-	31,048
Professional Dev Conferences	-	-	80,000	-	-	-	80,000
Professional Dev. Sponsorships	-	-	4,584	-	-	-	4,584
PSJA College for All STC Campus Tou	-	-	271	-	-	-	271
RCPSE Trainings	-	-	200	-	-	-	200
Science Olympiad/Planetarium-Aux	-	-	4,202	-	-	-	4,202
Staff Devlpmt-College Wide	-	-	45,723	-	-	-	45,723
STC Future Heroes 5K Challenge	-	-	526	-	-	-	526
STC Black History Month - AUX	-	-	18	-	-	-	18
Stu Initiative-BA Prgm & Univ Rel	-	-	3,003	-	-	-	3,003
Stu Initiative-Business & Tech	-	-	2,219	-	-	-	2,219
Stu Initiative-HS Programs & Svcs	-	-	901	-	-	-	901
Stu Initiative-LASS	-	-	2,200	-	-	-	2,200
Stu Initiative-Math & Science	-	-	1,307	-	-	-	1,307
Stu Initiative-Mid Valley	-	-	1,061	-	-	-	1,061
Stu Initiative-NAH	-	-	2,000	-	-	-	2,000
Stu Initiative-Starr County	-	-	1,997	-	-	-	1,997
Stu Initiative-Technology Campus	-	-	2,544	-	-	-	2,544
Stu Initiative-VP Academic Affairs	-	-	2,502	-	-	-	2,502
Student Activities & Wellness	848,141	254,443	469,251	80,000	-	-	1,651,835
Student Affairs Trainings and Events	-	-	22,000	-	-	-	22,000
Student Copier	-	-	27,356	-	-	-	27,356
Summit on College & Career Readiness	-	-	10,038	-	-	-	10,038
TASA Conference	-	-	6	-	-	-	6
Victim Scholarship	-	-	-	-	-	5,000	5,000
Women's History Month - AUX	-	-	283	-	-	-	283
Women's Studies Human Rights	-	-	215	-	-	-	215
Women's Studies Sex Traffic Conf	-	-	35	-	-	-	35
Total Expenditures	\$ 1,580,163	\$ 482,723	\$ 2,732,966	\$ 87,600	\$ -	\$ 8,500	\$ 4,891,952



SOUTH TEXAS COLLEGE

This page intentionally left blank.

Restricted Fund

South Texas College
Restricted Fund
Detail of Revenues by Source

Comparison of Previous Fiscal Years with Fiscal Year Ending August 31, 2020

Fund	FY '18 Budget	FY '19 Budget	FY '20 Budget
Revenue			
15th STC Anniversary Recognition	\$ 15,083	\$ 15,083	\$ 15,083
3rd Party - CPE	32,500	8,100	41,000
3rd Party - CPE State	1,440	1,440	-
AAWCC Scholarship	-	500	-
Americorp National Service	35,480	47,400	20,000
AT&T Foundation - BAT	260	37	500
Barnes & Noble General Scholarship	32,250	3,975	15,000
BAT Scholarship	-	-	250
BBVA Compass Foundation	15,000	15,000	15,000
Blimpie Scholarship	-	1,000	-
Border Security Training Center	97,369	97,369	78,318
Border Texan of the Year Funds	37,690	37,690	37,700
Border Texas Starr Cnty Scholarship	20,000	20,000	20,000
Capacity Building For Ability To Be	274,938	-	-
Carl Perkins Basic	1,483,709	1,684,000	1,822,900
Carl Perkins Sub Award PSJA	-	-	510,085
Catch the Next Dream Catchers Progr	-	18,000	13,600
CB Accelerate Texas	61,480	-	-
CB Accelerate Texas Mentor College	39,497	-	-
CCAMPIS	218,000	223,450	232,450
CDA Conference	-	2,500	-
CDA Program	-	40,480	-
Cengage - Gatlin	480	480	-
Cengage - Oncourse - Real Estate	5,000	5,000	-
Charles Robinson Scholarship	-	2,100	3,400
Child and Adult Care Food Program	65,530	54,500	61,546
Childcare Training Conferences	5,000	-	5,000
Childcare Training Quality Development	52,112	-	42,075
CHOC Scholarship	1,500	2,550	2,650
City of McAllen 20	29,378	-	-
City of McAllen 21	500,000	29,887	-
City of McAllen 22	-	500,000	19,432
City of McAllen 23	-	-	273,210
Cnty Hidalgo Community Service Agen	-	-	4,500
Colonia Integrated Care Program	11,238	-	-
College Readiness and Success	-	-	53,000
College Readiness and Success Completion	-	-	66,638

South Texas College

Restricted Fund

Detail of Revenues by Source

Comparison of Previous Fiscal Years with Fiscal Year Ending August 31, 2020

Fund	FY '18 Budget	FY '19 Budget	FY '20 Budget
College Readiness Initiatives	5,000	5,000	-
Community Health Project	-	-	50,000
Comprehensive College Readiness	113,957	-	-
Constancia G. Oliva Scholarship	600	500	750
Continuous Improvement Grant	-	51,494	-
CPE La Joya ISD	55,250	44,200	60,000
CPE McAllen ISD	13,000	16,700	23,000
CPE Rio Grande City CISD	1,200	639	639
CPE Sharyland ISD	45,000	45,000	45,000
CPE Texas Workforce Commission	50,700	36,000	14,000
CPE Valley View ISD Training	12,100	12,100	-
CPWE - Materials	2,700	2,700	2,700
Criminal Justice & Social Sciences	1,800	2,600	2,250
Dept of Assist & Rehab Academic	60,000	60,000	-
Diesel Technology Scholarship	-	-	2,600
Donna Independent School District	3,600	42,800	42,000
Dr. John F. Carroll Drama Scholarship	-	9,700	10,000
Dr. Ramiro Casso Scholarship	-	-	4,900
Early Childhood Child Dev't Schlrs	-	2,410	3,000
ED2GO_CPE	600	600	-
Edcouch-Elsa Independent School Dist	-	17,100	13,000
Edinburg CISD	2,000	49,300	37,000
Edinburg EDC	-	-	73,260
Elide Lee Scholarship Fund	-	-	1,500
Encore Capital Grp Comm College Sch	650	650	500
End. Glen & Rita Roney Scholarship	-	5,243	6,000
English Scholarship	-	-	500
Fed SEOG Allow.	1,200	-	-
Federal College Work Study	635,718	750,000	700,000
Federal CWS Allowance	70,900	-	35,000
Federal Pell	54,000,000	60,000,000	60,000,000
Federal Pell Allowance	95,200	56,858	72,000
Federal SEOG - Current Year	703,310	750,000	700,000
Gabriel "Spiffy 32" Ramirez Scholars	-	-	1,000
GED Tuition Assist Scholarship	2,700	2,700	2,700
Gene HAAS Scholarship	15,000	19,000	33,000
General Scholar Fund - Donation	200	200	100
Genrl Scholar - De Los Santos Endowment	-	411	300

South Texas College

Restricted Fund

Detail of Revenues by Source

Comparison of Previous Fiscal Years with Fiscal Year Ending August 31, 2020

Fund	FY '18 Budget	FY '19 Budget	FY '20 Budget
Gloria Fitch Scholarship	6,000	6,500	6,750
Grad TX Program	-	31,776	-
Gral Scholarship 3rd Party Agency	100,000	240,000	100,000
Harold W. McGraw, Jr. Prize	50,000	50,000	-
HDJT Edinburg	-	-	73,260
HDJT Weslaco	-	-	24,058
Hidalgo Co. Scholarship	-	10,255	11,000
Hidalgo County Community Service	16,319	10,400	-
Hidalgo County Headstart	2,850	2,600	8,000
Hidalgo ISD	1,900	8,100	9,000
Hidalgo ISD Training	9,300	5,900	11,500
High Demand Job Training	-	71,520	-
Holocaust	-	-	1,900
HSI 360 Adult Learner Academy	-	-	36,900
i3 Heal2 Project	-	-	84,500
IME-Becas Scholarship	10,675	8,900	-
Integrated Planning and Advising	75,000	-	-
Interest Income	6,051	6,051	6,051
Inventors and Entepreneur Collaboration	6,000	1,521	983
IS&P Adm Professionals' Scholarship	-	600	750
ITED Sustainability	222,687	-	1,057,900
Jeremy McLeash Scholarship Fund	1,200	1,200	5,500
Jobs and Education for Texans (JET)	184,178	-	-
John Wright Burger King	25	25	25
Karen Wilson-Nursing Scholarship	750	5,760	5,500
Kathleen A. Pavlisko Scholarship	-	-	300
Kennedy Memorial Foundation	18,000	25,714	22,500
Kent Biel Automotive Scholarship	-	-	27,000
Kinesiology Turkey Trot	15	15	15
Knapp	-	24,000	-
La Joya Independent School District	14,000	71,300	96,000
La Villa Independent School District	100	9,200	6,500
Lacks Employee & Dependent Scholars	1,620	176	250
Leah Meyer Austin Award	750	750	750
LRGVWDB WIA (Adult)	22,775	63,500	125,000
LRGVWDB WIA (Dislocated Worker)	20,100	8,600	18,000
LRGVWDB-WIA-TAA DW	12,740	12,500	2,800
LRGVWDB-WIA-TAA DW CPWE	114,900	174,700	218,000

South Texas College
Restricted Fund
Detail of Revenues by Source

Comparison of Previous Fiscal Years with Fiscal Year Ending August 31, 2020

Fund	FY '18 Budget	FY '19 Budget	FY '20 Budget
Luis Alberto Gomez Scholarship	-	-	50
Maudie Mary Finney Memorial Scholarship	-	11,800	13,800
McAllen ISD	-	40,100	53,000
MEDA Scholarship	169,920	180,000	180,000
Memorial Garden Fundraising	24,393	24,813	24,813
Mercedes ISD	1,400	35,000	32,000
Mesteño Scholarship Fund	-	-	50,000
MET Green Construction	37,900	43,900	43,900
MET Trainings Other	114,200	166,500	130,000
MET Medical Office Specialist	21,400	63,100	68,000
Metlife Foundation Excellence	12,150	12,150	-
Mexican Consulate	-	100	100
Military Spouse Career Adv Accts	5,660	6,000	6,465
Mission CISD	6,900	64,500	79,000
Mission EDC College Readiness	6,000	6,000	6,000
Monte Alto ISD	1,000	7,400	4,500
Motivation Edu & Train Truck Driving	176,750	211,500	78,000
Nadia & Lauren Lopez Memorial Schol	-	-	2,500
NAH College Success Scholarship	6,000	500	5,000
NAH Student Emergency Funds	-	-	100
NASA Scholarship	-	100	100
National Science Foundation	17,592	-	-
Noble Charities Scholarship	-	5,000	3,700
Nursing Innovation Grant Program	-	30,929	27,000
Nursing Shortage Reduction > 70% FY15	-	194,287	-
Nursing Shortage Reduction Program	-	-	138,000
Pepsi - General Scholarship	23,000	23,760	17,760
Pharr San Juan Alamo ISD	22,000	100,400	82,000
Physical Sci & Engr Dept Schlsp	-	800	1,100
PMTD (Woodcrafters Project)	500	500	500
Political Science Dept Scholarship	-	600	1,800
Prof Nursing Shortage Red Prg FY'15	129,200	-	-
Professional Nursing Shortage Reduction Program	-	-	113,000
Progreso ISD	1,600	17,800	25,000
PSJA ISD Training	143,900	164,400	260,000
Psychology Scholarship Fund	100	1,300	1,500
Quilting Society Scholarship	-	-	6,000
Ramanujam Scholarship	-	263	350

South Texas College
Restricted Fund
Detail of Revenues by Source

Comparison of Previous Fiscal Years with Fiscal Year Ending August 31, 2020

Fund	FY '18 Budget	FY '19 Budget	FY '20 Budget
Rea Charitable Trust Grant	33,000	-	-
Region One Gear Up	-	-	140,000
Retirement Allo Remn	27,984	27,984	27,984
RGV Focus - Gates Grant Program	-	14,000	-
Rio Grande CISD	11,200	23,600	19,000
Roma Independent School District	-	36,000	48,000
Royal Technologies Corp Scholarship	16,200	10,000	14,000
Saint Gorbain Corp. Gift	1,470	1,470	1,470
Samuel I Hernandez Sch	-	-	500
Self Sufficiency Fund	-	-	140,860
Senator Hinojosa Scholarship	-	8,500	10,100
SDF - Partnership with A Healthcare	-	1,270,362	-
Sharyland ISD	-	24,400	8,600
Skills Development Fund 25-Partners	-	-	11,678
Skills Development Fund 26	-	-	82,699
Skills Development Fund 28	-	-	359,861
Skills Development Fund 29	-	-	402,500
Skills Development Fund Healthcare	1,763,766	-	-
So Tx Health System NAH Scholarship	-	38,466	38,500
So Tx Precision Manufacturing Sch	5,500	1,000	3,750
South Texas Academic Rising	45,750	250	48,000
South Texas ISD	-	19,800	24,000
Speech Competition	50	50	50
Starr Campus Donation	2,220	2,220	2,220
Starr County Strategic Plan	-	-	55,000
Starr Cnty-Recognition Ceremon-Rest	2	2	2
Starr Psychology Club Scholarship	-	-	750
State Certified Educational Aide Sch	7,934	5,000	9,000
State Farm Program	-	-	2,808
STC Alumni and Friends-Scholarship	-	8,354	8,800
STC Faculty Sch Fund	-	-	800
STC Student Assitance Fund	20,850	22	200
STC in FOCUS (HIS Grant)	524,284	496,693	98,674
STEP 2 USDA Research Success	23,575	25,000	-
STHS-McAllen Med Cen Foundation Sch	-	-	49,000
Susan Harwood Grant	-	-	33,944
TAB-BASOL/TMGT	-	-	61,878
TAB-Medical and Health Service Management	-	-	40,650

South Texas College

Restricted Fund

Detail of Revenues by Source

Comparison of Previous Fiscal Years with Fiscal Year Ending August 31, 2020

Fund	FY '18 Budget	FY '19 Budget	FY '20 Budget
TAB-Handbook	-	-	14,906
TAEYC	2,000	-	-
Talent Hub	-	-	35,000
TAPPA, CAPP, & APPA Conferences	688	688	688
Team McAllen Cycling Club Sch	1,500	1,500	1,800
TEOG Initial - Current Year	1,634,500	1,481,763	1,602,100
TEOG Renewal - Current Year	700,500	1,103,641	1,090,000
Texas Affordable Baccalaureate Expansion	108,300	41,033	34,500
Texas College Work Study	150,000	161,866	140,000
Texas College Work Study Mentorship	-	-	140,899
Texas Communities Foundation	-	-	1,000
Texas Regional STEM Degree Accelerate	373,800	-	-
Texas Tuition Promise Fund	1,000	9,400	18,300
Texas Workforce Commission	84,000	148,200	87,000
TexPREP Program - Hidalgo ISD	36,000	36,000	36,000
TexPREP Program - PSJA ISD	36,000	36,000	36,000
TexPREP Program - Roma ISD	36,000	36,000	36,000
TexPREP Program - Weslaco ISD	27,000	27,000	36,000
The Dream. US Scholarship	37,420	36,700	56,000
The Institute for Advanced Manufacturing	26,900	77,300	150,000
THECB T-STEM Challenge Scholarship Program	176,000	125,723	-
Third Party Local Fund	10,800	21,400	57,000
TMC Early Head Start Program	5,100	5,100	-
TPEG CPWE	245,700	245,700	245,700
TPEG ITED	211,900	211,900	211,900
TPEG Non Resident Curr Yr	33,000	33,000	33,000
TPEG Resident Curr Yr	1,629,769	1,629,769	1,629,769
TPEG - NAH	1,500	1,500	1,500
Transfer - Unrestricted - ITED	950,447	1,814,531	949,704
Truth Initiative Respiratory Club	-	-	16,812
TSC Contract	-	80,518	-
TWC Accelerate Texas IV	-	-	185,765
TWC Ability to Benefit-Pell	-	-	9,253
TWC Explore STEM!	-	-	45,500
TWC Skills 27 Partnership with RGV	-	-	752,083
TWC Skills Development Fund 22 - Food Consortium	50,533	-	-
TWC Skills Development Fund 24	151,408	-	-
TWC Skills Development Fund 25	-	895,650	-

South Texas College

Restricted Fund

Detail of Revenues by Source

Comparison of Previous Fiscal Years with Fiscal Year Ending August 31, 2020

Fund	FY '18 Budget	FY '19 Budget	FY '20 Budget
TWC Skills Development Fund 26	-	1,000,000	-
TWC Skills for Small Business	21,000	10,000	14,700
TWC Wagner Peyser Year 1 B	500,000	-	-
TX Grant I Renewal Yr Curr Yr	15,000	15,000	-
TX Migrant Council	2,000	700	-
TX Nat'l Guard Tuition Assist Program	5,364	5,364	-
TX Tomorrow Fund	90,000	82,700	66,000
UTRGV MSI CBO	8,000	-	-
VA Chapter 33	1,174,130	1,174,200	1,113,800
Valley Scholars-Fundraising	-	40,000	77,000
Valley Scholars-Scholarships	80,850	70,000	100,000
Valley View ISD	600	25,300	35,000
Vanguard Academy	-	23,400	38,000
Veterans Chapter 31	248,760	250,000	300,000
Veterans Chapter 31 CPWE	-	2,800	6,000
Veteran's Chpt 31 Cost Allowance	7,900	7,900	10,900
Veteran's Memorial Scholarship	600	3,728	3,000
Veterans Tuition Assistance	8,022	3,000	25,000
Vets Ch 33 - CPE	-	-	4,000
Victoria Memorial Scholarship	600	4,400	1,500
VIDA - ACE II	38,000	92,000	-
VIDA - ACE III	-	183,401	240,801
VIDA - Alamo	-	-	6,000
VIDA - Arnold	18,000	52,500	-
VIDA - Brownsville	3,700	8,200	2,400
VIDA - City of Edinburg	44,000	44,000	-
VIDA - City of Mercedes	10,000	17,100	26,000
VIDA - City of Mercedes EDC	1,000	5,200	4,000
VIDA - CPWE Private Companies	-	6,200	6,000
VIDA - Greater TX Foundation	-	-	6,500
VIDA - Hidalgo	66,000	89,200	100,000
VIDA - La Feria	1,000	1,100	250
VIDA - Meadows Foundation	-	-	50,000
VIDA - Pharr	19,600	52,100	60,000
VIDA - Raymondville EDC	2,900	2,900	-
VIDA - Self Suff McAllen Fund	145,000	286,900	270,000
VIDA - TV2	6,500	1,100	-
VIDA - TVC3 Vet	-	-	30,000

South Texas College
Restricted Fund
Detail of Revenues by Source

Comparison of Previous Fiscal Years with Fiscal Year Ending August 31, 2020

Fund	FY '18 Budget	FY '19 Budget	FY '20 Budget
VIDA - Weslaco EDC	21,000	19,200	22,000
VIDA - Alamo	8,000	6,500	-
VIDA - VDAVBL Valley Bap Legacy Found	-	14,100	-
Weslaco EDC	-	-	100,000
Weslaco ISD	4,800	42,900	34,000
WFS Apprenticeship Texas Expansion	-	-	173,471
WIA - NEG Job Driven	2,280	2,280	-
Total Revenues	\$ 72,506,975	\$ 80,979,938	\$ 81,031,544



SOUTH TEXAS COLLEGE

This page intentionally left blank.

South Texas College
Restricted Fund
Detail of Expenditures by Classification and Fund
Budget for Fiscal Year 2019 - 2020

Fund	Salaries	Benefits	Operating
Expenditures			
15th STC Anniversary Recognition	\$ -	\$ -	\$ 15,083
3rd Party - CPE	-	-	-
Americorp National Service	-	-	-
AT&T Foundation - BAT	-	-	-
Barnes & Noble General Scholarship	-	-	-
BAT Scholarship	-	-	-
BBVA Compass Foundation	-	-	15,000
Border Security Training Center	-	-	78,318
Border Texan of the Year Funds	-	-	-
Border Texas Starr Cnty Scholarship	-	-	-
Carl Perkins Basic	663,790	284,100	623,210
Carl Perkins Sub Award PSJA	52,500	13,050	136,535
Catch the Next Dream Catchers Progr	-	-	4,400
CCAMPIS	-	-	232,450
Charles Robinson Scholarship	-	-	-
Child and Adult Care Food Program	8,501	1,700	51,345
Childcare Training Conferences	-	-	5,000
Childcare Training Quality Development	-	-	42,075
CHOC Scholarship	-	-	-
City of McAllen 22	1,810	600	1,054
City of McAllen 23	-	-	73,210
Cnty Hidalgo Community Service Agen	-	-	-
College Readiness and Success	41,400	8,600	3,000
College Readiness and Success Completion	50,638	16,000	-
Community Health Project	4,740	1,260	42,000
Constancia G. Oliva Scholarship	-	-	-
CPE La Joya ISD	-	-	-
CPE McAllen ISD	-	-	-
CPE Rio Grande City CISD	-	-	-
CPE Sharyland ISD	-	-	-
CPE Texas Workforce Commission	-	-	-
CPWE - Materials	-	-	2,700
Criminal Justice & Social Sciences	-	-	-
Diesel Technology Scholarship	-	-	-
Donna Independent School District	-	-	-
Dr. John F. Carroll Drama Scholarship	-	-	10,000
Dr. Ramiro Casso Scholarship	-	-	-
Early Childhood Child Dev't Schlrs	-	-	-
Edcouch-Elsa Independent School Dist	-	-	-
Edinburg CISD	-	-	-
Edinburg EDC	-	-	-
Elide Lee Scholarship Fund	-	-	-
Encore Capital Grp Comm College Sch	-	-	-

South Texas College
Restricted Fund
Detail of Expenditures by Classification and Fund
Budget for Fiscal Year 2019- 2020

(Continued)

Travel	Capital	Scholarships	Total
\$ -	\$ -	\$ -	\$ 15,083
-	-	41,000	41,000
-	-	20,000	20,000
-	-	500	500
-	-	15,000	15,000
-	-	250	250
-	-	-	15,000
-	-	-	78,318
-	-	37,700	37,700
-	-	20,000	20,000
26,300	225,500	-	1,822,900
8,000	300,000	-	510,085
9,200	-	-	13,600
-	-	-	232,450
-	-	3,400	3,400
-	-	-	61,546
-	-	-	5,000
-	-	-	42,075
-	-	2,650	2,650
360	-	15,608	19,432
-	-	200,000	273,210
-	-	4,500	4,500
-	-	-	53,000
-	-	-	66,638
2,000	-	-	50,000
-	-	750	750
-	-	60,000	60,000
-	-	23,000	23,000
-	-	639	639
-	-	45,000	45,000
-	-	14,000	14,000
-	-	-	2,700
-	-	2,250	2,250
-	-	2,600	2,600
-	-	42,000	42,000
-	-	-	10,000
-	-	4,900	4,900
-	-	3,000	3,000
-	-	13,000	13,000
-	-	37,000	37,000
-	-	73,260	73,260
-	-	1,500	1,500
-	-	500	500

South Texas College
Restricted Fund
Detail of Expenditures by Classification and Fund
Budget for Fiscal Year 2019 - 2020

Fund	Salaries	Benefits	Operating
End. Glen & Rita Roney Scholarship	-	-	-
English Scholarship	-	-	-
Federal College Work Study	-	-	-
Federal CWS Allowance	-	-	-
Federal Pell	-	-	-
Federal Pell Allowance	-	-	-
Federal SEOG - Current Year	-	-	-
Gabriel "Spiffy 32" Ramirez Scholars	-	-	-
GED Tuition Assist Scholarship	-	-	-
Gene HAAS Scholarship	-	-	-
General Scholar Fund - Donation	-	-	-
Genrl Scholar - De Los Santos Endowment	-	-	-
Gloria Fitch Scholarship	-	-	-
Gral Scholarship 3rd Party Agency	-	-	-
HDJT Edinburg	-	-	-
HDJT Weslaco	-	-	24,058
Hidalgo Co. Scholarship	-	-	-
Hidalgo County Headstart	-	-	-
Hidalgo ISD	-	-	-
Hidalgo ISD Training	-	-	-
Holocaust	-	-	1,900
HSI 360 Adult Learner Academy	13,900	23,000	-
i3 Heal2 Project	25,500	6,000	48,000
Interest Income	-	-	6,051
Inventors and Entepreneur Collaboration	800	119	64
IS&P Adm Professionals' Scholarship	-	-	-
ITED Sustainability	465,327	139,598	441,761
Jeremy McLeash Scholarship Fund	-	-	-
John Wright Burger King	-	-	-
Karen Wilson-Nursing Scholarship	-	-	-
Kathleen A. Pavlisko Scholarship	-	-	-
Kennedy Memorial Foundation	-	-	-
Kent Biel Automotive Scholarship	-	-	-
Kinesiology Turkey Trot	-	-	15
La Joya Independent School District	-	-	-
La Villa Independent School District	-	-	-
Lacks Employee & Dependent Scholars	-	-	-
Leah Meyer Austin Award	-	-	-
LRGVWDB WIA (Adult)	-	-	-
LRGVWDB WIA (Dislocated Worker)	-	-	-
LRGVWDB-WIA-TAA DW	-	-	-
LRGVWDB-WIA-TAA DW CPWE	-	-	-
Luis Alberto Gomez Scholarship	-	-	-
Maudie Mary Finney Memorial Scholarship	-	-	-

South Texas College
Restricted Fund
Detail of Expenditures by Classification and Fund
Budget for Fiscal Year 2019- 2020

(Continued)

Travel	Capital	Scholarships	Total
-	-	6,000	6,000
-	-	500	500
-	-	700,000	700,000
-	-	35,000	35,000
-	-	60,000,000	60,000,000
-	-	72,000	72,000
-	-	700,000	700,000
-	-	1,000	1,000
-	-	2,700	2,700
-	-	33,000	33,000
-	-	100	100
-	-	300	300
-	-	6,750	6,750
-	-	100,000	100,000
-	-	73,260	73,260
-	-	-	24,058
-	-	11,000	11,000
-	-	8,000	8,000
-	-	9,000	9,000
-	-	11,500	11,500
-	-	-	1,900
-	-	-	36,900
5,000	-	-	84,500
-	-	-	6,051
-	-	-	983
-	-	750	750
11,214	-	-	1,057,900
-	-	5,500	5,500
-	-	25	25
-	-	5,500	5,500
-	-	300	300
-	-	22,500	22,500
-	-	27,000	27,000
-	-	-	15
-	-	96,000	96,000
-	-	6,500	6,500
-	-	250	250
-	-	750	750
-	-	125,000	125,000
-	-	18,000	18,000
-	-	2,800	2,800
-	-	218,000	218,000
-	-	50	50
-	-	13,800	13,800

South Texas College
Restricted Fund
Detail of Expenditures by Classification and Fund
Budget for Fiscal Year 2019 - 2020

Fund	Salaries	Benefits	Operating
McAllen ISD	-	-	-
MEDA Scholarship	-	-	5,000
Memorial Garden Fundraising	-	-	24,813
Mercedes ISD	-	-	-
Mesteño Scholarship Fund	-	-	-
MET Green Construction	-	-	-
MET Trainings Other	-	-	-
MET Medical Office Specialist	-	-	-
Mexican Consulate	-	-	-
Military Spouse Career Adv Accts	-	-	-
Mission CISD	-	-	-
Mission EDC College Readiness	-	-	-
Monte Alto ISD	-	-	-
Motivation Edu & Train Truck Driving	-	-	-
Nadia & Lauren Lopez Memorial Schol	-	-	-
NAH College Success Scholarship	-	-	-
NAH Student Emergency Funds	-	-	-
NASA Scholarship	-	-	100
Noble Charities Scholarship	-	-	-
Nursing Innovation Grant Program	14,320	3,360	-
Nursing Shortage Reduction Program	81,000	34,000	23,000
Pepsi - General Scholarship	-	-	-
Pharr San Juan Alamo ISD	-	-	-
Physical Sci & Engr Dept Schlsp	-	-	1,100
PMTD (Woodcrafters Project)	-	-	500
Political Science Dept Scholarship	-	-	-
Professional Nursing Shortage Reduction Program	65,000	28,000	20,000
Progreso ISD	-	-	-
PSJA ISD Training	-	-	-
Psychology Scholarship Fund	-	-	-
Quilting Society Scholarship	-	-	-
Ramanujam Scholarship	-	-	-
Region One Gear Up	7,700	2,300	40,000
Retirement Allo Remn	-	-	27,984
Rio Grande CISD	-	-	-
Roma Independent School District	-	-	-
Royal Technologies Corp Scholarship	-	-	-
Saint Gorbain Corp. Gift	-	-	1,470
Samuel I Hernandez Sch	-	-	-
Self Sufficiency Fund	31,591	9,477	54,656
Senator Hinojosa Scholarship	-	-	-
Sharyland ISD	-	-	-
Skills Development Fund 25-Partners	6,653	1,963	1,062
Skills Development Fund 26	-	-	62,669

South Texas College
Restricted Fund
Detail of Expenditures by Classification and Fund
Budget for Fiscal Year 2019- 2020

(Continued)

Travel	Capital	Scholarships	Total
-	-	53,000	53,000
-	-	175,000	180,000
-	-	-	24,813
-	-	32,000	32,000
-	-	50,000	50,000
-	-	43,900	43,900
-	-	130,000	130,000
-	-	68,000	68,000
-	-	100	100
-	-	6,465	6,465
-	-	79,000	79,000
-	-	6,000	6,000
-	-	4,500	4,500
-	-	78,000	78,000
-	-	2,500	2,500
-	-	5,000	5,000
-	-	100	100
-	-	-	100
-	-	3,700	3,700
9,320	-	-	27,000
-	-	-	138,000
-	-	17,760	17,760
-	-	82,000	82,000
-	-	-	1,100
-	-	-	500
-	-	1,800	1,800
-	-	-	113,000
-	-	25,000	25,000
-	-	260,000	260,000
-	-	1,500	1,500
-	-	6,000	6,000
-	-	350	350
-	-	90,000	140,000
-	-	-	27,984
-	-	19,000	19,000
-	-	48,000	48,000
-	-	14,000	14,000
-	-	-	1,470
-	-	500	500
-	-	45,136	140,860
-	-	10,100	10,100
-	-	8,600	8,600
-	-	2,000	11,678
-	-	20,030	82,699

South Texas College
Restricted Fund
Detail of Expenditures by Classification and Fund
Budget for Fiscal Year 2019 - 2020

Fund	Salaries	Benefits	Operating
Skills Development Fund 28	70,000	30,000	69,111
Skills Development Fund 29	70,000	30,000	77,500
So Tx Health System NAH Scholarship	-	-	-
So Tx Precision Manufacturing Sch	-	-	-
South Texas Academic Rising	-	-	-
South Texas ISD	-	-	-
Speech Competition	-	-	50
Starr Campus Donation	-	-	2,220
Starr County Strategic Plan	-	-	50,000
Starr Cnty-Recognition Ceremon-Rest	-	-	2
Starr Psychology Club Scholarship	-	-	-
State Certified Educational Aide Sch	-	-	-
State Farm Program	2,250	338	220
STC Alumni and Friends-Scholarship	-	-	-
STC Faculty Sch Fund	-	-	-
STC Student Assitance Fund	-	-	-
STC in FOCUS (HIS Grant)	72,826	21,848	3,000
STHS-McAllen Med Cen Foundation Sch	-	-	-
Susan Harwood Grant	2,897	870	25,000
TAB-BASOL/TMGT	53,900	7,978	-
TAB-Medical and Health Service Management	28,750	11,900	-
TAB-Handbook	9,500	1,406	4,000
Talent Hub	27,000	8,000	-
TAPPA, CAPP, & APPA Conferences	-	-	-
Team McAllen Cycling Club Sch	-	-	-
TEOG Initial - Current Year	-	-	-
TEOG Renewal - Current Year	-	-	-
Texas Affordable Baccalaureate Expansion	-	-	34,500
Texas College Work Study	-	-	-
Texas College Work Study Mentorship	126,987	13,912	-
Texas Communities Foundation	-	-	1,000
Texas Tuition Promise Fund	-	-	-
Texas Workforce Commission	-	-	-
TexPREP Program - Hidalgo ISD	26,000	4,000	2,000
TexPREP Program - PSJA ISD	26,000	4,000	2,000
TexPREP Program - Roma ISD	26,000	4,000	2,000
TexPREP Program - Weslaco ISD	26,000	4,000	2,000
The Dream. US Scholarship	-	-	-
The Institute for Advanced Manufacturing	-	-	-
Third Party Local Fund	-	-	-
TPEG CPWE	-	-	-
TPEG ITED	-	-	-
TPEG Non Resident Curr Yr	-	-	-
TPEG Resident Curr Yr	-	-	-

South Texas College
Restricted Fund
Detail of Expenditures by Classification and Fund
Budget for Fiscal Year 2019- 2020

(Continued)

Travel	Capital	Scholarships	Total
-	40,750	150,000	359,861
-	50,000	175,000	402,500
-	-	38,500	38,500
-	-	3,750	3,750
-	-	48,000	48,000
-	-	24,000	24,000
-	-	-	50
-	-	-	2,220
5,000	-	-	55,000
-	-	-	2
-	-	750	750
-	-	9,000	9,000
-	-	-	2,808
-	-	8,800	8,800
-	-	800	800
-	-	200	200
1,000	-	-	98,674
-	-	49,000	49,000
5,177	-	-	33,944
-	-	-	61,878
-	-	-	40,650
-	-	-	14,906
-	-	-	35,000
688	-	-	688
-	-	1,800	1,800
-	-	1,602,100	1,602,100
-	-	1,090,000	1,090,000
-	-	-	34,500
-	-	140,000	140,000
-	-	-	140,899
-	-	-	1,000
-	-	18,300	18,300
-	-	87,000	87,000
4,000	-	-	36,000
4,000	-	-	36,000
4,000	-	-	36,000
4,000	-	-	36,000
-	-	56,000	56,000
-	-	150,000	150,000
-	-	57,000	57,000
-	-	245,700	245,700
-	-	211,900	211,900
-	-	33,000	33,000
-	-	1,629,769	1,629,769

South Texas College
Restricted Fund
Detail of Expenditures by Classification and Fund
Budget for Fiscal Year 2019 - 2020

Fund	Salaries	Benefits	Operating
TPEG - NAH	-	-	-
Transfer - Unrestricted - ITED	-	-	-
Truth Initiative Respiratory Club	3,000	240	13,572
TWC Accelerate Texas IV	45,833	13,750	76,324
TWC Ability to Benefit-Pell	6,471	1,941	841
TWC Explore STEM!	1,320	180	29,000
TWC Skills 27 Partnership with RGV	126,470	37,941	78,004
TWC Skills for Small Business	-	-	700
TX Tomorrow Fund	-	-	-
VA Chapter 33	-	-	-
Valley Scholars-Fundraising	-	-	77,000
Valley Scholars-Scholarships	-	-	-
Valley View ISD	-	-	-
Vanguard Academy	-	-	-
Veterans Chapter 31	-	-	-
Veterans Chapter 31 CPWE	-	-	-
Veteran's Chpt 31 Cost Allowance	-	-	-
Veteran's Memorial Scholarship	-	-	-
Veterans Tuition Assistance	-	-	-
Vets Ch 33 - CPE	-	-	-
Victoria Memorial Scholarship	-	-	-
VIDA - ACE III	-	-	-
VIDA - Alamo	-	-	-
VIDA - Brownsville	-	-	-
VIDA - City of Mercedes	-	-	-
VIDA - City of Mercedes EDC	-	-	-
VIDA - CPWE Private Companies	-	-	-
VIDA - Greater TX Foundation	-	-	-
VIDA - Hidalgo	-	-	-
VIDA - La Feria	-	-	-
VIDA - Meadows Foundation	-	-	-
VIDA - Pharr	-	-	-
VIDA - Self Suff McAllen Fund	-	-	-
VIDA - TVC3 Vet	-	-	-
VIDA - Weslaco EDC	-	-	-
Weslaco EDC	-	-	7,139
Weslaco ISD	-	-	-
WFS Apprenticeship Texas Expansion	84,047	30,620	17,500
Total Expenditures	\$ 2,370,421	\$ 800,052	\$ 2,694,264

South Texas College
Restricted Fund
Detail of Expenditures by Classification and Fund

Budget for Fiscal Year 2019- 2020

(Continued)

Travel	Capital	Scholarships	Total
-	-	1,500	1,500
-	-	949,704	949,704
-	-	-	16,812
-	-	49,858	185,765
-	-	-	9,253
-	-	15,000	45,500
-	-	509,668	752,083
-	-	14,000	14,700
-	-	66,000	66,000
-	-	1,113,800	1,113,800
-	-	-	77,000
-	-	100,000	100,000
-	-	35,000	35,000
-	-	38,000	38,000
-	-	300,000	300,000
-	-	6,000	6,000
-	-	10,900	10,900
-	-	3,000	3,000
-	-	25,000	25,000
-	-	4,000	4,000
-	-	1,500	1,500
-	-	240,801	240,801
-	-	6,000	6,000
-	-	2,400	2,400
-	-	26,000	26,000
-	-	4,000	4,000
-	-	6,000	6,000
-	-	6,500	6,500
-	-	100,000	100,000
-	-	250	250
-	-	50,000	50,000
-	-	60,000	60,000
-	-	270,000	270,000
-	-	30,000	30,000
-	-	22,000	22,000
-	-	92,861	100,000
-	-	34,000	34,000
3,000	-	38,304	173,471
\$ 102,259	\$ 616,250	\$ 74,448,298	\$ 81,031,544



SOUTH TEXAS COLLEGE

This page intentionally left blank.

Endowment Fund

South Texas College
Endowment Fund
Summary of Revenues, Expenditures and Transfers - Budget and Actual
Comparison of Previous Fiscal Years with Fiscal Year Ending August 31, 2020

Revenues	FY '18 Budget	FY '18 Actual	FY '19 Budget	FY '19 Estimated*	FY '20 Budget
Investment Interest Income	\$ 3,329	\$ 5,024	\$ 5,820	\$ 8,959	\$ 6,000
Other Funding Sources					
Carryover-Interest	830	838	-	3,025	13
Total Endowment Revenue	\$ 4,159	\$ 5,862	\$ 5,820	\$ 11,984	\$ 6,013
Expenditures/Transfers	FY '18 Budget	FY '18 Actual	FY '19 Budget	FY '19 Estimated*	FY '20 Budget
Non-Mandatory Transfers	\$ 4,152	\$ 5,845	\$ 5,809	\$ 11,961	\$ 6,000
Fund Balance Addition	7	17	11	23	13
Total Expenditures/Transfers	\$ 4,159	\$ 5,862	\$ 5,820	\$ 11,984	\$ 6,013
Ending Cash and Investment Balance	\$ 339,462	\$ 339,472	\$ 339,483	\$ 342,521	\$ 342,534

* Amounts are estimated. Actual amounts will be available after fiscal year end and completion of audit.



SOUTH TEXAS COLLEGE

This page intentionally left blank.

Plant Fund Unexpended

South Texas College
Plant Fund
Unexpended - Construction Fund - Non-Bond and Bond
Summary of Revenues, Expenditures and Transfers - Budget and Actual
Comparison of Previous Fiscal Years with Fiscal Year Ending August 31, 2020

Revenues and Transfers Summary - Budget and Actual**

Revenues/Transfers**	FY '18 Budget (As Amended)	FY '18 Actual	FY '19 Budget (As Amended)	FY '19 Estimated *	FY '20 Budget
Interest	\$ 247,686	\$ 388,640	\$ 282,688	\$ 905,476	\$ 500,000
Interest Limited Tax Bonds, Series 2014	-	86	-	-	-
Interest Limited Tax Bonds, Series 2015	143,789	395,425	-	6,238	-
Transfer In Bond 2015 - New Construction	-	-	-	719,525	-
Transfer In - Unrestricted Fund	4,000,000	4,000,000	5,000,000	4,000,000	2,000,000
Transfer In - Unrestricted Fund _ Continuing Ed	2,000,000	2,000,000	-	1,000,000	1,000,000
Regional Ctr for Public Safety Excellence _ Pharr ISD	1,000,000	710,000	290,000	290,000	-
La Joya ISD	352,500	356,972	-	-	-
Hidalgo County _ Wage Scale Study - District Wide	-	15,260	-	-	-
Fund Balance Deduction	18,664,050	-	12,460,740	-	13,537,045
Fund Balance Deduction _ Limited Tax Bonds, Series 2014 and 2015	75,431,276	68,173,493	2,639,420	20,408	-
Total Revenues/Transfers**	\$ 101,839,301	\$ 76,039,876	\$ 20,672,848	\$ 6,941,647	\$ 17,037,045

Expenditures Summary - Budget and Actual**

Expenditures**	FY '18 Budget (As Amended)	FY '18 Actual	FY '19 Budget (As Amended)	FY '19 Estimated *	FY '20 Budget
Projected Draws for Approved Projects	\$ 23,264,236	\$ 1,132,425	\$ 16,033,428	\$ 3,792,051	\$ 17,037,045
Projected Draws for Approved Projects _ Bond Series 2014 and 2015	75,575,065	68,569,004	2,639,420	746,171	-
Fund Balance Addition _ Transfer In	3,000,000	-	2,000,000	-	-
Fund Balance Addition	-	6,338,447	-	2,403,425	-
Total Expenditures**	\$ 101,839,301	\$ 76,039,876	\$ 20,672,848	\$ 6,941,647	\$ 17,037,045
Ending Fund Cash and Investment Balance _ New Construction		36,413,728		38,817,153	25,280,108
Ending Fund Cash and Investment Balance _ Bond Series 2014 and 2015		20,408		-	-
Ending Fund Cash and Investment Balance		\$ 36,434,136		\$ 38,817,153	\$ 25,280,108

*Amounts are estimated. Actual amounts will be available after fiscal year end and completion of audit.

** Includes Fund Balance Addition/Deduction.

The plant fund group consists of four separate funds, including funds set aside for the acquisition of physical properties for institutional purposes but unexpended at the date of reporting.

South Texas College Plant Fund

Unexpended - Construction Fund - Non-Bond Detail of Projected Expenditures for Approved Construction Projects Project Budget with Projected Expenditures for Fiscal Year Ending August 31, 2020

Construction Project		Fund	Project Budget	Previous Expenditures*	Projected Expenditures 2020
Pecan Campus - Previous Fiscal Years Projects					
Pecan Sand Volleyball Courts	Construction	912925	95,532	79,648	15,884
Pecan Sand Volleyball Courts	Design	912926	9,521	7,846	1,675
Pecan Sand Volleyball Courts	Miscellaneous	912927	7,955	2,855	5,100
Pecan Library Renovation	Construction	912942	500,000	-	500,000
Pecan Library Renovation	Design	912943	862,500	15,000	847,500
Pecan Library Renovation	Miscellaneous	912944	103,500	2,500	101,000
Pecan Building H Cafeteria Renovation	Construction	912991	600,000	-	600,000
Pecan Building H Cafeteria Renovation	Design	912978	60,000	31,400	28,600
Pecan Building H Cafeteria Renovation	Miscellaneous	912979	24,600	2,500	22,100
Pecan Building H Cafeteria Renovation	FFE	912992	225,000	-	225,000
Pecan Building H Cafeteria Renovation	Technology	912993	48,000	-	48,000
Pecan Building M Office and Work Space Renovation	Construction	912994	420,000	-	420,000
Pecan Building M Office and Work Space Renovation	Design	912995	42,000	21,000	21,000
Pecan Building M Office and Work Space Renovation	Miscellaneous	912996	5,755	2,455	3,300
Pecan Building M Office and Work Space Renovation	FFE	912997	80,000	-	80,000
Pecan Building M Office and Work Space Renovation	Technology	912998	27,540	-	27,540
Pecan Building H West Elevation Modification	Construction	911160	150,000	-	150,000
Pecan Building H West Elevation Modification	Design	911161	15,000	-	15,000
Pecan Building H West Elevation Modification	Miscellaneous	911162	3,750	-	3,750
Pecan Building H West Elevation Modification	Technology	911163	15,000	-	15,000
Pecan Cooling Towers Screen Upgrades	Construction	911164	275,000	-	275,000
Pecan Cooling Towers Screen Upgrades	Design	911165	40,698	13,198	27,500
Pecan Cooling Towers Screen Upgrades	Miscellaneous	911166	6,875	-	6,875
Pecan Site Improvements to North Pecan Campus	Construction	911168	35,000	-	35,000
Pecan Site Improvements to North Pecan Campus	Miscellaneous	911169	2,000	-	2,000
Pecan Park and Ride Portable Renovation and Fence Enclosure for College Vehicles	Construction	911177	60,000	-	60,000
Pecan Park and Ride Portable Renovation and Fence Enclosure for College Vehicles	Miscellaneous	911178	2,000	-	2,000
Pecan Park and Ride Portable Renovation and Fence Enclosure for College Vehicles	FFE	911179	3,000	-	3,000
Pecan Park and Ride Portable Renovation and Fence Enclosure for College Vehicles	Technology	911180	53,000	-	53,000
Pecan Campus - Proposed New Projects					
Pecan Building G Physical Science Classroom Conversions	Construction	911182	188,000	-	188,000
Pecan Building G Physical Science Classroom Conversions	Design	911183	18,000	-	18,000
Pecan Building G Physical Science Classroom Conversions	Miscellaneous	911184	60,000	-	60,000
Pecan Building G Physical Science Classroom Conversions	FFE	911185	67,000	-	67,000
Pecan Campus Entry Monument Sign	Construction	911187	100,000	-	100,000
Pecan Campus Entry Monument Sign	Miscellaneous	911188	3,000	-	3,000

South Texas College Plant Fund

Unexpended - Construction Fund - Non-Bond Detail of Projected Expenditures for Approved Construction Projects Project Budget with Projected Expenditures for Fiscal Year Ending August 31, 2020

Construction Project		Fund	Project Budget	Previous Expenditures*	Projected Expenditures 2020
Pecan Plaza Campus - Proposed New Projects					
Pecan Plaza Kinesiology Renovation	Construction	911190	122,000	-	122,000
Pecan Plaza Kinesiology Renovation	Design	911191	12,200	-	12,200
Pecan Plaza Kinesiology Renovation	Miscellaneous	911192	3,600	-	3,600
Pecan Plaza Kinesiology Renovation	FFE	911193	6,000	-	6,000
Mid Valley Campus - Previous Fiscal Years Projects					
MV Thermal Plant Renovation	Construction	912680	160,000	-	160,000
MV Thermal Plant Renovation	Design	912681	16,000	1,500	14,500
MV Thermal Plant Renovation	Miscellaneous	912682	4,812	1,012	3,800
MV Thermal Plant Renovation	Technology	912683	6,000	-	6,000
MV East Loop Drive	Construction	912684	187,000	-	187,000
MV East Loop Drive	Design	912685	18,700	-	18,700
MV East Loop Drive	Miscellaneous	912686	8,500	-	8,500
MV Student Services Renovation	Construction	912687	200,000	-	200,000
MV Student Services Renovation	Design	912688	20,000	5,000	15,000
MV Student Services Renovation	Miscellaneous	912689	5,000	1,300	3,700
MV Student Services Renovation	FFE	912690	80,000	-	80,000
MV Student Services Renovation	Technology	912691	50,000	-	50,000
Mid Valley Campus - Proposed New Projects					
MV Conversion of Cafeteria to CLE	Construction	912692	132,000	-	132,000
MV Conversion of Cafeteria to CLE	Design	912693	13,200	-	13,200
MV Conversion of Cafeteria to CLE	Miscellaneous	912694	4,000	-	4,000
MV Conversion of Cafeteria to CLE	FFE	912695	50,000	-	50,000
MV Conversion of Cafeteria to CLE	Technology	912696	25,000	-	25,000
Technology Campus - Previous Fiscal Years Projects					
Tech Automotive Lab Exhaust System	Construction	912582	100,000	-	100,000
Tech Automotive Lab Exhaust System	Design	912583	10,000	-	10,000
Tech Automotive Lab Exhaust System	Miscellaneous	912584	1,600	-	1,600
Tech Campus Building A & B Renovations	Construction	911306	750,000	-	750,000
Tech Campus Building A & B Renovations	Design	911307	75,000	-	75,000
Tech Campus Building A & B Renovations	Miscellaneous	911308	24,300	1,800	22,500
Tech Campus Building A & B Renovations	FFE	911309	350,000	-	350,000
Tech Campus Building A & B Renovations	Technology	911310	123,750	-	123,750
Tech Shipping and Receiving Bldg D. Office Renovation	FFE	911314	10,000	-	10,000
Tech Shipping and Receiving Bldg D. Office Renovation	Technology	911315	2,000	-	2,000
Tech Campus Site Improvements	Construction	911316	50,000	-	50,000
Tech Campus Site Improvements	Design	911317	5,000	-	5,000
Tech Campus Site Improvements	Miscellaneous	911318	2,000	-	2,000
Nursing & Allied Health Campus - Previous Fiscal Years Projects					
NAH Student Success Center Renovation	Construction	911692	170,000	40,000	130,000
NAH Student Success Center Renovation	Design	911693	17,000	6,750	10,250
NAH Student Success Center Renovation	Miscellaneous	911694	5,100	1,800	3,300
NAH Student Success Center Renovation	FFE	911695	61,241	-	61,241
NAH Student Success Center Renovation	Technology	911696	9,465	-	9,465

South Texas College

Plant Fund

Unexpended - Construction Fund - Non-Bond

Detail of Projected Expenditures for Approved Construction Projects Project Budget with Projected Expenditures for Fiscal Year Ending August 31, 2020

Construction Project	Fund	Project Budget	Previous Expenditures*	Projected Expenditures 2020	
NAH Student Services Renovation	Construction	911055	275,000	-	275,000
NAH Student Services Renovation	Design	911056	27,500	5,500	22,000
NAH Student Services Renovation	Miscellaneous	911057	5,000	2,000	3,000
NAH Student Services Renovation	FFE	911058	75,000	-	75,000
NAH Student Services Renovation	Technology	911059	45,000	-	45,000
<hr/>					
NAH West Entry Campus Sign	Construction	911698	75,000	-	75,000
NAH West Entry Campus Sign	Miscellaneous	911699	1,000	-	1,000
<hr/>					
Starr County Campus - Previous Fiscal Years Projects					
Starr Student Services Renovation	Construction	912750	160,000	-	160,000
Starr Student Services Renovation	Design	912751	16,000	3,200	12,800
Starr Student Services Renovation	Miscellaneous	912752	4,000	1,300	2,700
Starr Student Services Renovation	FFE	912753	30,000	-	30,000
Starr Student Services Renovation	Technology	912754	15,000	-	15,000
<hr/>					
Starr Cultural Arts Center Renovation	Construction	912760	100,000	-	100,000
Starr Cultural Arts Center Renovation	Design	912764	10,000	-	10,000
Starr Cultural Arts Center Renovation	Miscellaneous	912762	3,000	-	3,000
Starr Cultural Arts Center Renovation	FFE	912765	30,000	-	30,000
Starr Cultural Arts Center Renovation	Technology	912761	20,000	-	20,000
<hr/>					
Starr Welding Expansion	Construction	912768	150,000	-	150,000
Starr Welding Expansion	Design	912769	15,000	-	15,000
Starr Welding Expansion	Miscellaneous	912770	5,000	1,800	3,200
Starr Welding Expansion	FFE	912771	50,000	-	50,000
Starr Welding Expansion	Technology	912772	10,000	-	10,000
<hr/>					
Regional Center for Public Safety Excellence - Previous Fiscal Years Projects					
RCPSE Target Range (TxPWD) - STC 25%	Construction	911790	374,531	-	374,531
RCPSE Target Range (TxPWD) - STC 25%	Design	911793	87,406	-	87,406
RCPSE Target Range (TxPWD) - STC 25%	Miscellaneous	911791	49,495	2,167	47,328
RCPSE Target Range (TxPWD) - STC 25%	FFE	911773	75,000	-	75,000
RCPSE Target Range (TxPWD) - STC 25%	Technology	911792	47,880	-	47,880
<hr/>					
RCPSE Target Range (TxPWD) - GRANT 75%	Construction	915525	1,123,595	-	1,123,595
RCPSE Target Range (TxPWD) - GRANT 75%	Design	915524	262,219	-	262,219
RCPSE Target Range (TxPWD) - GRANT 75%	Miscellaneous	915526	148,485	6,501	141,984
RCPSE Target Range (TxPWD) - GRANT 75%	FFE	915528	225,000	-	225,000
RCPSE Target Range (TxPWD) - GRANT 75%	Technology	915527	143,640	-	143,640
<hr/>					
RCPSE Canopy for Safety Training Vehicles	Construction	911797	85,000	-	85,000
RCPSE Canopy for Safety Training Vehicles	Design	911798	8,500	-	8,500
RCPSE Canopy for Safety Training Vehicles	Miscellaneous	911799	4,000	-	4,000
RCPSE Canopy for Safety Training Vehicles	Technology	911781	6,000	-	6,000
<hr/>					
RCPSE Canopy for Students/Instructors	Construction	915501	250,000	-	250,000
RCPSE Canopy for Students/Instructors	Design	915502	25,000	-	25,000
RCPSE Canopy for Students/Instructors	Miscellaneous	915503	4,000	-	4,000
RCPSE Canopy for Students/Instructors	Technology	915512	6,000	-	6,000

South Texas College

Plant Fund

Unexpended - Construction Fund - Non-Bond

Detail of Projected Expenditures for Approved Construction Projects Project Budget with Projected Expenditures for Fiscal Year Ending August 31, 2020

Construction Project	Fund	Project Budget	Previous Expenditures*	Projected Expenditures 2020	
RCPSE Portables	Construction	915504	727,884	412,696	315,188
RCPSE Portables	Design	915505	19,166	8,060	11,106
RCPSE Portables	Miscellaneous	915506	19,500	5,000	14,500
RCPSE Portables	FFE	915507	58,200	15,000	43,200
RCPSE Portables	Technology	915508	175,250	68,212	107,038
RCPSE Fire Training Area	Construction	915513	426,000	-	426,000
RCPSE Fire Training Area	Design	915514	42,600	-	42,600
RCPSE Fire Training Area	Miscellaneous	915515	13,500	-	13,500
RCPSE Fire Training Area	FFE	915516	100,000	-	100,000
Regional Center for Public Safety Excellence - Proposed New Projects					
RCSPE Running and Exercise Track	Construction	915530	150,000	-	150,000
RCSPE Running and Exercise Track	Design	915531	15,000	-	15,000
RCSPE Running and Exercise Track	Miscellaneous	915532	4,500	-	4,500
RCSPE Running and Exercise Track	FFE	915533	50,000	-	50,000
RCPSE Additional Parking Lot	Construction	915535	266,000	-	266,000
RCPSE Additional Parking Lot	Design	915536	26,600	-	26,600
RCPSE Additional Parking Lot	Miscellaneous	915537	8,000	-	8,000
Higher Education Center La Joya - Proposed New Projects					
HECLJ Building and Wayfinding Signage	Construction	915539	50,000	-	50,000
HECLJ Building and Wayfinding Signage	Miscellaneous	915540	2,000	-	2,000
District Wide - Proposed New Projects					
District-Wide	Land	911705	3,000,000	-	3,000,000
District-Wide Renovations and Contingencies	Construction	911704	750,000	-	750,000
District-Wide Renovations and Contingencies	Design	911715	30,000	-	30,000
District-Wide Renovations and Contingencies	Miscellaneous	911724	9,000	-	9,000
District-Wide Renovations and Contingencies	FFE	911716	20,000	-	20,000
District-Wide Renovations and Contingencies	Technology	911725	38,000	-	38,000
District-Wide Outdoor Furniture	Construction	911702	25,000	-	25,000
District-Wide Facility Signage	Construction	912268	50,000	-	50,000
District-Wide Removal of Existing Trees	Construction	912895	25,000	-	25,000
District-Wide Removal of Existing Trees	Miscellaneous	912896	900	-	900
District-Wide Facilities Conditional Assessment	Construction	915517	50,000	-	50,000
District-Wide Automatic Doors Phase IV	Construction	911735	85,000	-	85,000
District-Wide Automatic Doors Phase IV	Design	911736	8,500	-	8,500
District-Wide Automatic Doors Phase IV	Miscellaneous	911737	2,500	-	2,500
District-Wide Campus Master Plan	Design	911718	375,000	-	375,000
District-Wide Fence Enclosures	Design	915543	36,000	-	36,000
Total Previous Fiscal Years Projects			11,925,045	769,000	11,156,045
Total Proposed New Projects			5,881,000	-	5,881,000
Total Construction Program Draws			\$ 17,806,045	\$ 769,000	\$ 17,037,045



SOUTH TEXAS COLLEGE

This page intentionally left blank.

Plant Fund
Renewals/Replacements

South Texas College
Plant Fund
Renewals and Replacements Fund
Summary of Revenues, Expenditures and Transfers - Budget and Actual
Comparison of Previous Fiscal Years with Fiscal Year Ending August 31, 2020

Revenues and Transfers Summary - Budget and Actual**

Revenues/Transfers**	FY '18 Budget (As Amended)	FY '18 Actual	FY '19 Budget (As Amended)	FY '19 Estimated *	FY '20 Budget
Transfers In - Unrestricted	\$ 1,000,000	\$ 1,000,000	\$ 1,000,000	\$ 1,000,000	\$ -
Fund Balance Deduction	5,332,500	33,427	7,121,600	798,967	7,624,000
Total Revenues/Transfers**	\$ 6,332,500	\$ 1,033,427	\$ 8,121,600	\$ 1,798,967	\$ 7,624,000

Expenditures Summary - Budget and Actual**

Expenditures**	FY '18 Budget (As Amended)	FY '18 Actual	FY '19 Budget (As Amended)	FY '19 Estimated *	FY '20 Budget
Renewals and Replacements Expenditures	\$ 5,332,500	\$ 1,033,427	\$ 7,121,600	\$ 1,798,967	\$ 7,624,000
Fund Balance Addition _ Transfer In Unrestricted	1,000,000	-	1,000,000	-	-
Total Expenditures**	\$ 6,332,500	\$ 1,033,427	\$ 8,121,600	\$ 1,798,967	\$ 7,624,000
Ending Fund Cash and Investment Balance		\$ 24,024,114		\$ 23,225,147	\$ 15,601,147

* Amounts are estimated. Actual amounts will be available after fiscal year end and completion of audit.

** Includes Fund Balance Addition/Deduction.

The plant fund group consists of four separate funds, including funds set aside for the renewals and replacements of institutional properties.

South Texas College

Plant Fund

Renewals & Replacements Fund

Detail of Projected Expenditures for Approved Renewals & Replacements Projects

Project Budget with Projected Expenditures for Fiscal Year Ending August 31, 2020

Construction Project	Fund	Project Budget	Previous Expenditures*	Projected Expenditures 2020	
Pecan Campus - Previous Fiscal Years Projects					
Pecan Arbor Brick Column Repairs & Replacement Phase I	Construction	921191	217,594	17,594	200,000
Pecan Arbor Brick Column Repairs & Replacement Phase I	Design	921182	13,000	2,000	11,000
Pecan Arbor Brick Column Repairs & Replacement Phase I	Miscellaneous	921192	11,000	1,000	10,000
Pecan Building X Data Cabling Infrastructure Replacement	Construction	921702	101,967	11,967	90,000
Pecan Building J Data Cabling Infrastructure Replacement	Construction	921705	406,684	206,684	200,000
Pecan Campus - Proposed New Projects					
Pecan Building A Data Cabling Infrastructure Replacement	Construction	921707	80,000	-	80,000
Pecan Building B Data Cabling Infrastructure Replacement	Construction	921709	40,000	-	40,000
Pecan Building H Data Cabling Infrastructure Replacement	Construction	921711	150,000	-	150,000
Pecan Building M Generator Replacement	Construction	921713	250,000	-	250,000
Pecan Building M Generator Replacement	Design	921714	25,000	-	25,000
Pecan Building M Generator Replacement	Miscellaneous	921715	5,000	-	5,000
Pecan Reseeding and Regrading of Athletic Fields	Construction	921717	125,000	-	125,000
Mid Valley Campus - Previous Fiscal Years Projects					
MV Resurfacing Parking Lot #3	Construction	921238	50,000	-	50,000
MV Resurfacing Parking Lot #3	Design	921239	3,000	-	3,000
MV Resurfacing Parking Lot #3	Miscellaneous	921240	4,000	-	4,000
MV Resurfacing Parking Lot #7	Construction	921241	90,000	-	90,000
MV Resurfacing Parking Lot #7	Design	921242	9,000	-	9,000
MV Resurfacing Parking Lot #7	Miscellaneous	921243	7,000	-	7,000
MV Resurfacing Northwest Drive	Construction	921246	180,000	-	180,000
MV Resurfacing Northwest Drive	Design	921247	5,000	-	5,000
MV Resurfacing Northwest Drive	Miscellaneous	921248	6,000	-	6,000
MV Roofing Replacement	Construction	921250	860,000	-	860,000
MV Roofing Replacement	Design	921255	86,000	-	86,000
MV Roofing Replacement	Miscellaneous	921256	5,000	-	5,000
Mid Valley Campus - Proposed New Projects					
MV Drainage Improvements Phase I	Construction	921251	290,000	-	290,000
MV Drainage Improvements Phase I	Design	921252	29,000	-	29,000
MV Drainage Improvements Phase I	Miscellaneous	921253	15,203	703	14,500
Technology Campus - Previous Fiscal Years Projects					
Tech Campus Building B Concrete Floor Repairs	Construction	921337	80,000	-	80,000
Tech Campus Building B Concrete Floor Repairs	Design	921338	4,800	3,200	1,600
Tech Campus Building B Concrete Floor Repairs	Miscellaneous	921339	10,407	7,107	3,300
Nursing & Allied Health Campus - Previous Fiscal Years Projects					
NAH West Side Window Waterproofing	Construction	921412	50,000	-	50,000
NAH West Side Window Waterproofing	Design	921413	10,000	-	10,000
NAH West Side Window Waterproofing	Miscellaneous	921414	5,000	-	5,000

South Texas College

Plant Fund

Renewals & Replacements Fund

Detail of Projected Expenditures for Approved Renewals & Replacements Projects

Project Budget with Projected Expenditures for Fiscal Year Ending August 31, 2020

Construction Project	Fund	Project Budget	Previous Expenditures*	Projected Expenditures 2020	
NAH Westside Elevators Refurbishment	Construction	921421	150,000	-	150,000
NAH Westside Elevators Refurbishment	Design	921423	8,000	-	8,000
NAH Westside Elevators Refurbishment	Miscellaneous	921422	1,000	-	1,000
NAH Roofing Replacement	Construction	921432	250,000	-	250,000
NAH Roofing Replacement	Design	921433	25,000	-	25,000
NAH Roofing Replacement	Miscellaneous	921434	5,000	-	5,000
Nursing & Allied Health Campus - Proposed New Projects					
NAH Building A Analog to Digital Conversion	Construction	921435	500,000	-	500,000
NAH Building A Data Cabling Infrastructure Replacement	Construction	921437	150,000	-	150,000
Starr County Campus - Previous Fiscal Years Projects					
Starr Repaint Stucco Buildings	Construction	921504	80,000	-	80,000
Starr Repaint Stucco Buildings	Design	921506	8,000	-	8,000
Starr Repaint Stucco Buildings	Miscellaneous	921505	2,400	-	2,400
Starr Roofing Replacement	Construction	921518	770,000	-	770,000
Starr Roofing Replacement	Design	921519	77,000	-	77,000
Starr Roofing Replacement	Miscellaneous	921520	5,000	-	5,000
Starr County Campus - Proposed New Projects					
Starr Building A Data Cabling Infrastructure Replacement	Construction	921521	40,000	-	40,000
Starr Building B Data Cabling Infrastructure Replacement	Construction	921523	40,000	-	40,000
Starr Building C Data Cabling Infrastructure Replacement	Construction	921525	40,000	-	40,000
District-Wide - Previous Fiscal Years Projects					
District-Wide Marker Boards Replacement	Construction	921601	325,610	125,610	200,000
District-Wide Marker Boards Replacement	Miscellaneous	921602	1,762	762	1,000
District-Wide Irrigation System Controls Upgrade	Construction	921604	70,000	-	70,000
District-Wide Irrigation System Controls Upgrade	Design	921605	5,000	-	5,000
District-Wide Irrigation System Controls Upgrade	Miscellaneous	921606	2,100	900	1,200
District-Wide Fire Alarm Panel Replacement/Upgrades	Construction	921610	199,463	19,463	180,000
District-Wide Fire Alarm Panel Replacement/Upgrades	Design	921611	17,500	-	17,500
District-Wide Fire Alarm Panel Replacement/Upgrades	Miscellaneous	921612	2,500	-	2,500
District-Wide Interior LED Lighting Upgrade	Construction	921613	309,862	109,862	200,000
District-Wide Ext Walkway LED Lighting Upgrade Ph I	Construction	921616	61,489	12,489	49,000
District-Wide Interior Controls Upgrade	Construction	921631	106,669	31,669	75,000
District-Wide Interior Controls Upgrade	Design	921632	7,500	-	7,500
District-Wide Interior Controls Upgrade	Miscellaneous	921633	1,500	-	1,500
District-Wide Flooring Replacement	Construction	921634	567,367	67,367	500,000
District-Wide Flooring Replacement	Miscellaneous	921635	4,000	-	4,000
District-Wide Restroom Fixtures Replacement & Upgrade	Construction	921637	38,143	13,143	25,000
District-Wide Water Heater Replacement & Upgrade	Construction	921639	30,387	10,387	20,000

South Texas College

Plant Fund

Renewals & Replacements Fund

Detail of Projected Expenditures for Approved Renewals & Replacements Projects

Project Budget with Projected Expenditures for Fiscal Year Ending August 31, 2020

Construction Project	Fund	Project Budget	Previous Expenditures*	Projected Expenditures 2020	
District-Wide HVAC Upgrades	Construction	921643	650,327	50,327	600,000
District-Wide HVAC Upgrades	Design	921644	60,000	-	60,000
District-Wide Exterior Lighting Upgrade	Construction	921648	295,912	45,912	250,000
District-Wide Exterior Lighting Upgrade	Design	921649	25,000	-	25,000
District-Wide Exterior Lighting Upgrade	Miscellaneous	921650	4,000	-	4,000
District-Wide Keyless Entry Access Upgrades (IT)	Construction	921653	69,315	19,315	50,000
District-Wide - Proposed New Projects					
District-Wide Renewals & Replacements	Construction	921122	150,000	-	150,000
Total Previous Fiscal Years Projects			6,452,258	756,758	5,695,500
Total Proposed New Projects			1,929,203	703	1,928,500
Total Construction Program Draws			\$ 8,381,461	\$ 757,461	\$ 7,624,000

Plant Fund
Ret. of Indebtedness

**South Texas College
Plant Fund
Retirement of Indebtedness Fund
Summary of Revenues, Expenditures and Transfers - Budget and Actual**

Comparison of Previous Fiscal Years with Fiscal Year Ending August 31, 2020

Revenues and Transfers Summary - Budget and Actual**

Revenues/Transfers	FY '18 Budget	FY '18 Actual	FY '19 Budget	FY '19 Estimated*	FY '20 Budget
Taxes - Current	\$ 12,340,182	\$ 15,483,779	\$ 12,664,978	\$ 13,677,219	\$ 11,106,240
Taxes - Delinquent	640,015	759,271	711,003	724,973	609,614
Taxes - Penalty & Interest	463,554	483,729	480,660	458,094	388,647
Interest	118,792	290,806	389,049	414,510	200,000
Transfer In - Unrestricted Fund - Bond 2007 (MTR)	394,800	394,800	395,200	395,200	-
Fund Balance Deduction	2,780,000	-	-	-	1,500,000
Total Revenues/Transfers	\$ 16,737,343	\$ 17,412,384	\$ 14,640,890	\$ 15,669,996	\$ 13,804,501

Expenditures Summary - Budget and Actual**

Expenditures**	FY '18 Budget	FY '18 Actual	FY '19 Budget	FY '19 Estimated*	FY '20 Budget
Debt Service Payment - Bond 2007 (LTR)	\$ 6,699,000	\$ 6,699,000	\$ -	\$ -	\$ -
Debt Service Payment - Bond 2007 (MTR)	394,800	394,800	395,200	395,200	-
Debt Service Payment - Bond 2010 (LTR)	2,191,700	2,191,700	382,950	382,950	-
Debt Service Payment - Bond 2014	2,687,500	2,687,500	4,962,500	4,962,500	4,958,750
Debt Service Payment - Bond 2015	4,696,606	4,696,606	7,986,106	7,986,106	8,769,606
Administrative & Collection Fees	67,737	77,838	76,145	61,425	76,145
Fund Balance Addition	-	664,940	837,989	1,881,815	-
Total Expenditures**	\$ 16,737,343	\$ 17,412,384	\$ 14,640,890	\$ 15,669,996	\$ 13,804,501
Ending Fund Cash and Investment Balance	\$ 7,333,748	\$ 11,119,809	\$ 8,171,737	\$ 13,001,624	\$ 6,671,737

*Amounts are estimated. Actual amounts will be available after fiscal year end and completion of audit.

** Includes Fund Balance Addition.

The plant fund group consists of four separate funds, including funds set aside for debt service charges and for the retirement of indebtedness on institutional properties.



SOUTH TEXAS COLLEGE

This page intentionally left blank.

Section 140.0045

Expenditures

South Texas College
Summary of Local Government Code Section 140.0045 Expenditures
Itemization of Certain Expenditures Required in Certain Political Subdivision Budgets**

Comparison of Previous Fiscal Year with Fiscal Year Ending August 31, 2020

<u>Expenditures</u>	<u>FY '19 Budget</u>	<u>FY '19 Actual*</u>	<u>FY '20 Budget</u>
Total Section 140.0045 Expenditures	\$ 43,345	\$ 43,345	\$ 42,716

The budgeted and estimated expenditure amounts are included in various departmental organization budgets.

* Amounts are estimated. Audited actual amounts will be available after fiscal year end and completion of financial audit.

** Expenditures for directly or indirectly influencing or attempting to influence the outcome of legislation or administrative action as those terms are defined in Section 305.002, Government Code.



SOUTH TEXAS COLLEGE

This page intentionally left blank.

Resolution

Resolution No. 2019-006

A RESOLUTION ADOPTING THE BUDGET OF SOUTH TEXAS COLLEGE FOR THE FISCAL YEAR BEGINNING SEPTEMBER 1, 2019 AND ENDING AUGUST 31, 2020 IN ACCORDANCE WITH THE PROVISIONS OF THE TEXAS EDUCATION CODE AND ORDERING OTHER PROVISIONS RELATED TO THE SUBJECT MATTER HEREOF.

BE IT ORDERED BY THE BOARD OF TRUSTEES OF SOUTH TEXAS COLLEGE, THAT:

SECTION I: The Budget Estimate of revenues for South Texas College District (the “College District”) and the expenses of conducting the affairs thereof for the ensuing fiscal year beginning September 1, 2019, and ending August 31, 2020, as submitted by the President of the College, be, and the same is in all things, adopted and approved as the budget of all of the current revenues and expenses for the fiscal year beginning the 1st day of September, 2019, and ending the 31st day of August, 2020.

SECTION II: The amount of ad valorem taxes and revenue from other sources, as estimated by the President, is hereby appropriated out of the various Funds for the payment of operating expenses and capital outlay of the College District. A copy of the Budget Summary indicating such revenues and appropriating their expenditures is attached hereto and made a part hereof for all purposes as Exhibit “A” and shall remain on file in the Office of the President.

SECTION III: The sums indicated in Exhibit “A” are hereby appropriated in the Unrestricted Fund and College’s Debt Service Fund out of the current year ad valorem taxes as collected for the purposes of maintenance and operation of the College District, as applicable, and applying the interest due on the general obligation bonds, redeeming the bonds as they mature, and creating sinking funds as required by such bonds.

SECTION IV: All Resolutions or parts of Resolutions in conflict herewith are hereby repealed.

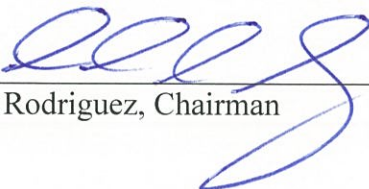
SECTION V: This Resolution shall be and remain in full force and effect as of September 1, 2019.

SECTION VI: If any part, or parts, of this Resolution are found to be invalid or unconstitutional by a court having competent jurisdiction, then such invalidity or unconstitutionality shall not affect the remaining parts hereof and such remaining parts shall remain in full force and effect, and to the extent this Resolution is considered severable.

CONSIDERED, PASSED and APPROVED this 27 day of August, 2019 at a meeting of the Board of Trustees of South Texas College District at which a quorum was present and which was held in accordance with the Texas Government Code Chapter 551.

SIGNED this 27 day of August, 2019.

SOUTH TEXAS COLLEGE DISTRICT

By: 
Paul Rodriguez, Chairman

ATTEST:

By: 
Roy De León, Secretary



**SOUTH TEXAS
COLLEGE**

