



South Texas College Budget

For Fiscal Year 2011-2012



South Texas College Budget

Fiscal Year 2011-2012



Hidalgo County and Starr County, Texas

South Texas College Budget For The Fiscal Year Ending August 31, 2012

TABLE OF CONTENTS

INTRODUCTORY SECTION

Board of Trustees	1-3
Executive Staff.....	4
Comprehensive Mission: Vision, Purpose, Core Values, Guiding Principles & Strategic Directions	5
Fact Sheet 2011-2012	6
Programs of Study 2011-2012	7
Summary of Fall Semester Headcount, Unduplicated Annual Headcount and Annual Full Time Equivalent (FTE).....	8

ALL FUNDS SUMMARY

Summary of Revenues and Transfers and Expenditures, Transfers and Contingencies by Fund - Current and Plant Funds	9
---	---

UNRESTRICTED FUND REVENUES

Revenues by Source - Pie Chart.....	12
Revenues by Source - Comparison of Previous Fiscal Year with Fiscal Year Ending August 31, 2012 - Pie Chart	13
Summary of Revenues - Budget and Actual - Comparison of Previous Fiscal Years with Fiscal Year Ending August 31, 2012	14
Detail of Revenues by Source - Comparison of Previous Fiscal Years with Fiscal Year Ending August 31, 2012	15-17

UNRESTRICTED FUND EXPENDITURES

Expenditures by Function (Without Transfers and Contingencies) - Pie Chart.....	20
Expenditures by Function - Comparison of Previous Fiscal Year with Fiscal Year Ending August 31, 2012 - Pie Chart	21
Expenditures by Classification (Without Transfers and Contingencies) - Pie Chart.....	22
Expenditures by Classification - Comparison of Previous Fiscal Year with Fiscal Year Ending August 31, 2012	23
Summary of Expenditures by Function and Classification.....	24-25
Summary of Expenditures by Function - Budget and Actual - Comparison of Previous Fiscal Years with Fiscal Year Ending August 31, 2012	26
Summary of Expenditures by Classification - Budget and Actual - Comparison of Previous Fiscal Years with Fiscal Year Ending August 31, 2012	27

UNRESTRICTED FUND EXPENDITURES BY FUNCTION, CLASSIFICATION AND ORGANIZATION

Detail of Expenditures by Function, Classification and Organization	29-49
---	-------

South Texas College Budget For The Fiscal Year Ending August 31, 2012

TABLE OF CONTENTS *(Continued)*

UNRESTRICTED FUND CAPITAL EXPENDITURES

Summary of Capital Expenditures by Function and Organization	51
Detail of Capital Expenditures by Function and Organization	52

AUXILIARY FUND

Detail of Revenues by Source - Comparison of Previous Fiscal Years with Fiscal Year Ending August 31, 2012	53
Detail of Expenditures by Classification and Organization	55-56

RESTRICTED FUND

Detail of Revenues by Source - Comparison of Previous Fiscal Years with Fiscal Year Ending August 31, 2012	57-61
Detail of Expenditures by Classification and Fund.....	63-66

PLANT FUND - UNEXPENDED

Unexpended - Construction Fund - Summary of Revenues, Expenditures and Transfers - Budget and Actual.....	67
Unexpended - Construction Fund - Detail of Projected Expenditures for Approved Construction Projects	68-69

PLANT FUND - RENEWALS AND REPLACEMENTS

Renewals and Replacements Fund - Summary of Revenues, Expenditures and Transfers - Budget and Actual.....	71
Renewals & Replacements Fund - Detail of Projected Expenditures for Approved Renewals & Replacements Projects.....	72

PLANT FUND - RETIREMENT OF INDEBTEDNESS

Retirement of Indebtedness Fund - Summary of Revenues, Expenditures and Transfers - Budget and Actual.....	73
---	----

RESOLUTION

Resolution Adopting the Budget of South Texas College for the Fiscal Year 2011 - 2012	75-76
---	-------

South Texas College

Budget For the Fiscal Year Ending August 31, 2012

Board of Trustees

GARY GURWITZ
CHAIR



Managing Partner, Atlas & Hall, L.L.P., McAllen
District 4
Representing North McAllen, Northwest Pharr, Palmhurst, Northeast Mission and Southwest Edinburg (Appointed 1993-1998)
First Term: May 1998-May 2004
Second Term: May 2004-May 2010
Third Term: May 2010-May 2016
Serves as Chair of the Facilities Committee and is a member of the Finance & Human Resources Committee
Formerly served as Chair, Vice Chair, and Secretary of the Board

ROSE BENAVIDEZ
VICE-CHAIR



President of Starr County Industrial Foundation
District 1
Representing Starr County
First Term: Nov. 2009 – May 2012
Serves as a member of the Facilities Committee

OSCAR LONGORIA, JR.
SECRETARY

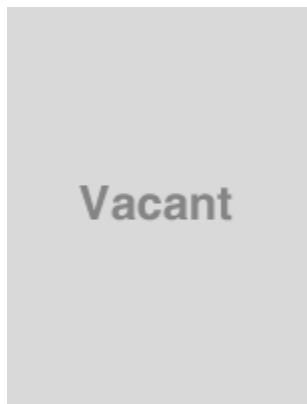


Attorney
District 2
Representing La Joya, Western Mission, Palmview, Sullivan City, Penitas and Western Alton
First Term: May 2009 – May 2012
Serves as a member of the Education and Workforce Innovation Committee

South Texas College
Budget For the Fiscal Year Ending August 31, 2012

Board of Trustees

**VACANT
DISTRICT 3**



District 3
Representing South McAllen, South West Pharr, Hidalgo, Sharyland, Southeast Mission and Granjeno

**DR. ALEJO SALINAS, JR.
MEMBER**



Clinical Lecturer, University of Texas-Pan American
Retired Superintendent/Superintendent Emeritus, Hidalgo ISD
District 5
Representing North West Hidalgo County, Edinburg, North San Juan and Northeast Pharr
First Term: May 1996-May 2002
Second Term: May 2002-May 2008
Third Term: May 2008-May 2014
Serves as a member of the Education and Workforce Innovation Committee and the Finance and Human Resources Committee
Formerly served a member of the Facilities Committee

South Texas College

Budget For the Fiscal Year Ending August 31, 2012

Board of Trustees

JESSE VILLARREAL
MEMBER



Parental Involvement Department, Weslaco ISD
District 6
Representing Donna, South Alamo, South San Juan, South East Pharr, South Weslaco and Progreso
First Term: May 2000-May 2006
Second Term: May 2006-May 2012
Serves as a member of the Facilities Committee
Formerly served as Secretary and Vice Chair of the Board

ROY DE LEON
MEMBER



Vice President of Compass Bank– McAllen
District 7
Representing North East Hidalgo County, North Weslaco, Edcouch-Elsa, La Villa, North Mercedes, Northeast Alamo, Northeast Edinburg and Hargill (Appointed 1997-1998)
First Term: May 1998-May 2002
Second Term: May 2002-May 2008
Third Term: May 2008-May 2014
Serves as Chair of the Finance & Human Resources Committee
Formerly served as Chair of the Board and as a member of the Facilities Committee

South Texas College
Budget
For The Fiscal Year Ending August 31, 2012

EXECUTIVE STAFF

NAME	POSITION
Dr. Shirley A. Reed, MBA, Ed. D.	President
Jose Cruz, Jr.	Vice President for Information Services and Planning
Diana A. Peña	Vice President for Financial Services
Juan E. Mejia	Vice President for Academic Affairs
Dr. William Serrata	Vice President for Student Affairs and Enrollment Management
Wanda F. Garza	Executive Officer for the North American Advanced Manufacturing Research & Education Initiative

The Vision, Purpose, Core Values, Guiding Principles, and Strategic Directions Constitute the **Comprehensive Mission** for South Texas College

VISION A better quality of life for our communities.

PURPOSE South Texas College is a world-class comprehensive institution of higher learning providing premier educational and workforce programs and services in response to the needs of the region.

CORE VALUES

- Student Success
- Learning
- Excellence
- Integrity
- Community
- Opportunity

GUIDING PRINCIPLES

- Be a premier learning-centered higher education institution where student and community success are paramount;
- Serve as the cornerstone for the economic vitality of South Texas;
- Foster an environment for the students and community to achieve a better quality of life;
- Nurture a culture where collaboration is valued and achievement is recognized.

STRATEGIC DIRECTIONS

- South Texas College commits to student learning as the foundation of student success through excellence in teaching and service, faculty and staff empowerment, professional development, and accountability.
- South Texas College proudly provides opportunities to all students with high expectations for their success.
- South Texas College leads the transformation of the region to a “college-going” culture whereby attending and completing higher education is expected for all.
- South Texas College serves as the catalyst for regional economic prosperity and social mobility.
- South Texas College models professionalism through integrity, mutual respect, civility, trust, and collaboration.
- South Texas College champions a culture of excellence based on evidence.

Approved by the Board of Trustees, September 13, 2007.





South Texas College Fact Sheet 2011-2012

Locations

Pecan Campus
McAllen, TX

Mid-Valley Campus
Weslaco, TX

Starr County Campus
Rio Grande City, TX

Technology Campus
McAllen, TX

**Dr. Ramiro R. Casso
Nursing & Allied Health
Campus**
McAllen, TX

Executive Staff

Dr. Shirley A. Reed
President

Juan E. Mejia
VP, Academic Affairs

Dr. William Serrata
*VP, Student Affairs and
Enrollment Management*

Jose Cruz, Jr.
*VP, Information Services
and Planning*

Diana A. Pena
VP, Finance

Wanda F. Garza
*Executive Officer for the
North American Advanced
Manufacturing Research &
Education Initiative*

Board of Trustees

Gary Gurwitz
Chair

Rose Benavidez
Vice Chair

Oscar Longoria Jr.
Secretary

Roy de León
Member

Dr. Alejo Salinas Jr.
Member

Jesse Villarreal
Member

About South Texas College

Founded in 1993, South Texas College is accredited by the Commission on Colleges of the Southern Association of Colleges and Schools to award baccalaureate and associate degrees. More than 30,000 students attend STC, and a faculty and staff of more than 1,600 serve STC's five state-of-the-art campuses.

Associate Degrees and Certificates

The college offers more than 100 degree and certificate program options in a variety of liberal art, math, social science, science, technology, nursing and allied health fields of study.

Bachelor of Applied Technology

STC offers Bachelor of Applied Technology degrees in Technology Management and Computer and Information Technologies. The college is the only Texas community college accredited to offer two BAT degrees.

Dual Enrollment Opportunities

STC has instituted a variety of dual enrollment programs, including early college high schools, drop-out recovery programs, academies and other unique initiatives with high schools throughout Hidalgo and Starr counties. The programs allow eligible students to take college courses with the opportunity to earn certificates and associate degrees while attending high school. Combined, more than 9,000 students are currently enrolled in these programs.

eSTC Virtual Campus

Through the college's new virtual campus, students not only have access to more than 500 online courses, they can also take advantage of library services, admissions, advising, payment services, financial aid, bookstore and testing. STC also offers 10 online associate degrees options so students never need set foot on an STC campus to earn their degree.

Continuing, Professional and Workforce Education

The program provides opportunities for lifelong learners who want to upgrade their skills, change careers, renew licenses and certifications, or seek personal enrichment. There is a wide variety of course offerings including online classes. Additionally the division also offers customized training to area businesses, industries and the community. Training programs are tailored to a client's specific needs in terms of content, schedule and location.

NAAMREI

The college is the fiscal agent and home of the executive offices for the North American Advanced Manufacturing Research and Education Initiative. STC serves as the Regional Institute for Advanced Manufacturing linked to all community and technical colleges in the region. The college has taken the lead in helping train workers to fuel a regional manufacturing economy and to support innovations in advanced, rapid response manufacturing.

Articulation Agreements

For those students who wish to continue their education beyond an associate's degree, STC has more than 60 articulation agreements in place with colleges across the country.

Vital Statistics

- o More than 60% of student population are the first in their families to attend college
- o More than 95% of students are Hispanic
- o More than 75% of students (not including dual enrollment students) take advantage of some form of financial aid
- o Class size averages 26 students per faculty member

In accordance with the Americans with Disabilities Act of 1990, Title IX of the Education Amendment of 1972, and Section 504 of the Vocational Rehabilitation Act of 1973, STC provides accommodations as required by law to afford equal educational opportunities to all people.

For questions about the accreditation of South Texas College contact the Commission on Colleges at (404) 679-4500.

(956) 872-8311

www.southtexascollege.edu



SOUTH TEXAS COLLEGE PROGRAMS OF STUDY 2011-2012

For the 2011-2012 academic year, STC has 106 degrees and certificates available to its students: 3 Baccalaureate degrees, one Associate of Arts Degree in 18 fields of study, one Associate of Arts Degree in Teaching in 3 fields of study, one Associate of Science Degree in 8 fields of study, 26 Associate of Applied Science Degrees, and 49 Certificates.

BACCALAUREATE DEGREES

- Bachelor of Applied Technology in Technology Management
- Bachelor of Applied Technology in Computer and Information Technologies
- Bachelor of Applied Technology in Medical and Health Services Management

BUSINESS & TECHNOLOGY

ASSOCIATE OF ART DEGREE FIELD OF STUDY

- Business Administration-Transfer Plan

ASSOCIATE OF APPLIED SCIENCE DEGREES

- Automotive Technology
 - Specialization:
 - GM-ASEP
- Business Administration
 - Specializations:
 - Accounting
 - Banking
 - Import/Export/Logistics
 - Management
 - Marketing
 - Technology Management
- Business Computer Systems
 - Specializations:
 - Computer Specialist
 - Networking Specialist
- Computer Aided Drafting and Design Technology
 - Specializations:
 - Architectural Drafting
 - Civil Drafting
 - Design and Technical Graphics
 - Geographic Information Systems
- Construction Supervision
- Culinary Arts
- Diesel Technology
- Electrician Technology*
- Electronic and Computer Maintenance Technology
 - Specializations:
 - Computer Maintenance Technology
 - Computer Support Specialist
 - Telecommunication Technology Specialist
- Heating, Ventilation, Air Conditioning and Refrigeration Technology
- Human Resource Specialist
- Legal Office Management
- Office Management
- Paralegal
- Precision Manufacturing Technology

CERTIFICATES

- Accounting Clerk
- Architectural Drafting
- Automotive Technology
- Banking
- Basic Firefighter
- Civil Drafting
- Combination Welding
- Commercial Cooking
- Computer and Information Technologies Specialist
- Computer and Internet Specialist
- Computer and Network Specialist*
- Computer Applications Specialist
- Computer Maintenance Specialist
- Computer Support Specialist
- Construction Supervision Assistant
- Design and Technical Graphics
- Diesel Technology
- Electrician Assistant
- Electronic Technology Specialist
- Ford Youth and Adult Training Program
- Geographic Information Systems
- Heating, Ventilation, Air Conditioning and Refrigeration Technology
- Human Resource Assistant
- Information Security Specialist
- Import/Export
- Legal Office Specialist
- Logistics
- Management
- Marketing
- Mechatronics Specialist
- Multimedia Specialist
- Office Specialist
- Plumber Assistant
- Precision Manufacturing Technology
- Structural Welding
- Telecommunication Technology Specialist

LIBERAL ARTS & SOCIAL SCIENCES

ASSOCIATE OF ARTS DEGREE FIELDS OF STUDY

- Anthropology
- Communication
- Criminal Justice
- Drama
- English
- Fine Arts
- Graphic Arts
- History
- Interdisciplinary Studies
- Kinesiology
- Language and Cultural Studies
- Mexican-American Studies
- Philosophy
- Political Science
- Psychology
- Social Work
- Sociology

* Pending approval from the Texas Higher Education Coordinating Board.
** This is a two-year certificate.

ASSOCIATE OF ARTS IN TEACHING FIELDS OF STUDY

- EC-6 Generalist
- 4-8 Generalist
- Grades 8-12

ASSOCIATE OF APPLIED SCIENCE DEGREES FIELDS OF STUDY

- American Sign Language and Interpreter Studies
 - Specializations:
 - Deaf Support Specialist
 - Sign Language Interpreter
- Child Development

CERTIFICATES

- Child Development
 - Specializations:
 - Infant and Toddler
 - Pre-School
- Trilingual Interpreter (Enhanced Skills Certificate)

MATH & SCIENCE

ASSOCIATE OF SCIENCE DEGREE FIELDS OF STUDY

- Biology
- Chemistry
- Computer Information Systems
- Computer Science
- Engineering
- Mathematics
- Physics
- Pre-Pharmacy

NURSING & ALLIED HEALTH ASSOCIATE OF APPLIED SCIENCE DEGREES

- Associate Degree Nursing
 - LVN/ADN Transition
 - Paramedic to RN
- Emergency Medical Technology-Paramedic
- Health Information Technology
- Medical Assistant Technology
- Occupational Therapy Assistant
- Pharmacy Technology
- Physical Therapist Assistant
- Radiologic Technology
- Respiratory Therapy

CERTIFICATES

- Electronic Health Record Specialist*
- Emergency Medical Technology-Basic
- Emergency Medical Technology-Intermediate
- Emergency Medical Technology-Paramedic**
- Medical Assistant Technology
- Medical Coding Specialist
- Medical Information/Transcription Specialist
- Medical Office Specialist*
- Patient Care Assistant
- Pharmacy Technology
- Vocational Nursing

South Texas College

Summary of Fall Semester Headcount, Unduplicated Annual Headcount and Annual Full Time Equivalent (FTE)

Academic Year	Fall Semester Headcount	Unduplicated Annual Headcount	Annual FTE
1993 - 94	1,055	2,719	1,318
1994 - 95	2,227	4,720	2,221
1995 - 96	3,254	6,893	3,087
1996 - 97	5,416	9,756	4,696
1997 - 98	6,849	11,861	5,737
1998 - 99	9,598	14,391	7,572
1999 - 00	10,364	15,214	7,901
2000 - 01	11,183	16,793	8,343
2001 - 02	12,443	18,357	9,275
2002 - 03	13,691	20,447	10,173
2003 - 04	15,228	21,927	10,529
2004 - 05	17,035	23,847	11,384
2005 - 06	16,233	23,594	11,147
2006 - 07	18,460	25,423	11,675
2007 - 08	19,808	27,940	12,705
2008 - 09	21,666	30,796	14,162
2009 - 10	26,368	36,211	17,918
2010 - 11	28,006	38,625	19,218
2011 - 12 *	29,000		

* Projected

South Texas College
Current & Plant Funds
Summary of Revenues and Transfers and Expenditures,
Transfers and Contingencies by Fund

Budget for Fiscal Year 2011 - 2012

Fund	Revenues and Transfers*	Expenditures, Transfers and Contingencies
Unrestricted Fund	\$ 135,794,770	\$ 135,794,770
Auxiliary Fund	\$ 2,248,515	\$ 2,248,515
Restricted Fund	\$ 74,910,030	\$ 74,910,030
Plant Fund - Unexpended - Construction	\$ 10,524,035	\$ 10,524,035
Plant Fund - Renewals & Replacements	\$ 3,906,802	\$ 3,906,802
Plant Fund - Retirement of Indebtedness	\$ 12,101,784	\$ 12,101,784

* Amounts may include Fund Balance (Carryover).



This page intentionally left blank.

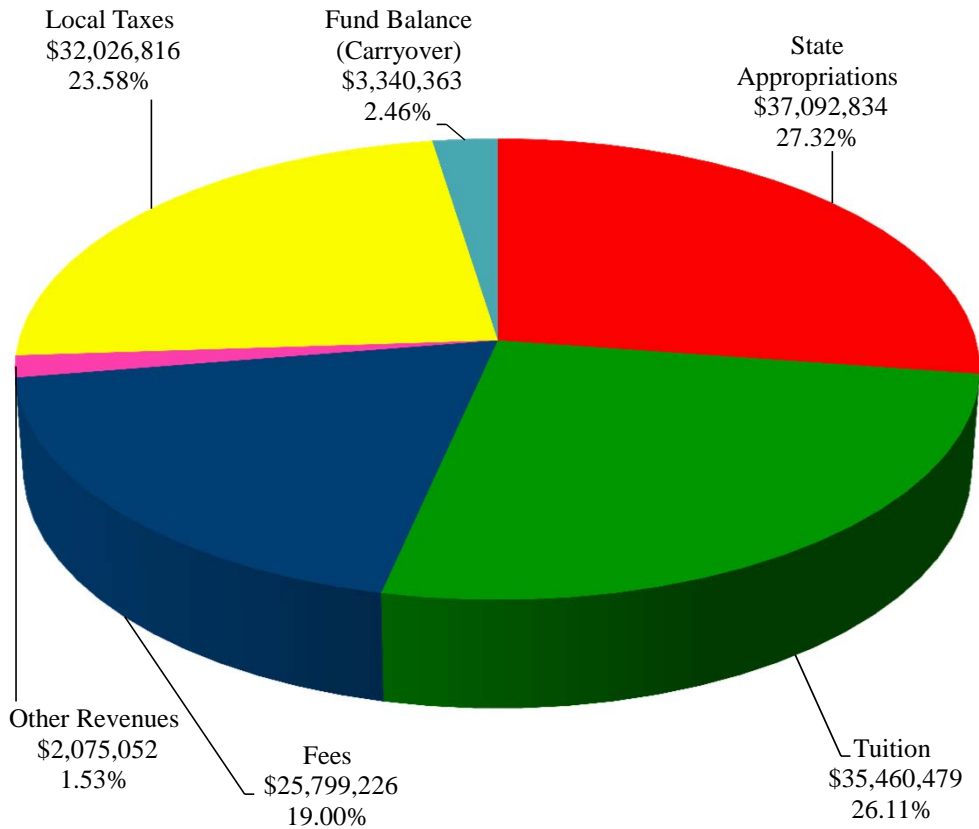


This page intentionally left blank.

South Texas College Unrestricted Fund Revenues by Source

Budget for Fiscal Year 2011 - 2012

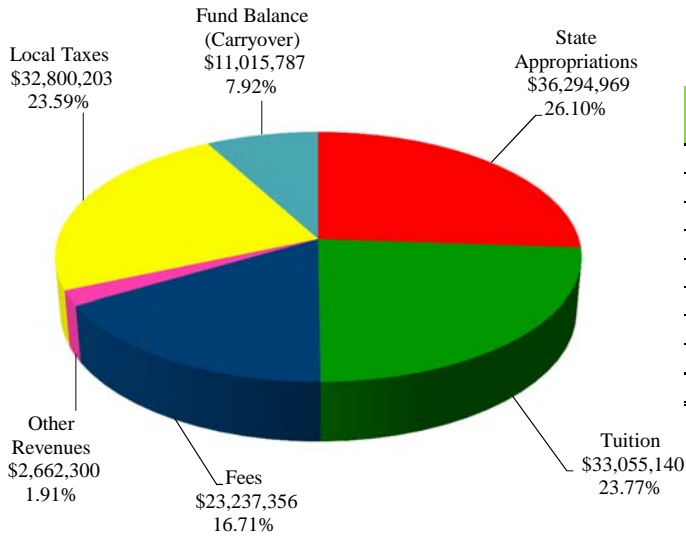
Source of Revenues	FY '12 Budget	Percentage
State Appropriations	\$ 37,092,834	27.32%
Tuition	35,460,479	26.11%
Fees	25,799,226	19.00%
Other Revenues	2,075,052	1.53%
Local Taxes	32,026,816	23.58%
Fund Balance (Carryover)	3,340,363	2.46%
Total Revenues	\$ 135,794,770	100.00%



South Texas College Unrestricted Fund Revenues by Source

Comparison of Previous Fiscal Year with Fiscal Year Ending August 31, 2012

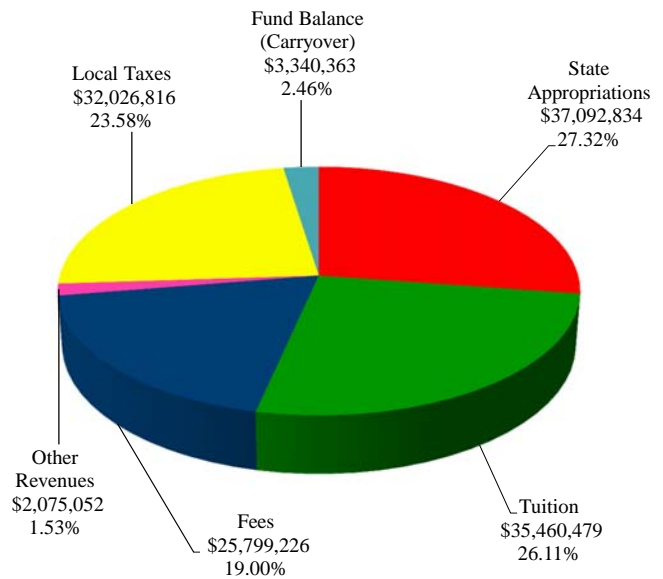
Fiscal Year 2011



Source of Revenues	FY '11 Budget (As Amended)	Percentage
State Appropriations	\$ 36,294,969	26.10%
Tuition	33,055,140	23.77%
Fees	23,237,356	16.71%
Other Revenues	2,662,300	1.91%
Local Taxes	32,800,203	23.59%
Fund Balance (Carryover)	11,015,787	7.92%
Total Revenues	\$ 139,065,755	100.00%

Fiscal Year 2012

Source of Revenues	FY '12 Budget	Percentage
State Appropriations	\$ 37,092,834	27.32%
Tuition	35,460,479	26.11%
Fees	25,799,226	19.00%
Other Revenues	2,075,052	1.53%
Local Taxes	32,026,816	23.58%
Fund Balance (Carryover)	3,340,363	2.46%
Total Revenues	\$ 135,794,770	100.00%



South Texas College
Unrestricted Fund
Summary of Revenues - Budget and Actual

Comparison of Previous Fiscal Years with Fiscal Year Ending August 31, 2012

Revenue Source	FY '10 Budget (As Amended)	FY '10 Actual	FY '11 Budget (As Amended)	FY '11 Estimated*	FY '12 Budget
State Appropriations	\$ 36,907,393	\$ 29,095,388	\$ 36,294,969	\$ 36,696,685	\$ 37,092,834
Tuition	28,449,155	30,320,978	33,055,140	31,778,076	35,460,479
Fees	15,617,715	17,893,924	23,237,356	22,244,667	25,799,226
Other Revenues	2,242,105	2,997,940	2,662,300	2,665,697	2,075,052
Local Taxes	33,244,006	34,314,946	32,800,203	33,100,203	32,026,816
Fund Balance (Carryover)	10,003,136	10,003,136	11,015,787	11,015,787	3,340,363
Total Unrestricted Fund Revenues	\$ 126,463,510	\$ 124,626,312	\$ 139,065,755	\$ 137,501,115	\$ 135,794,770

* Amounts are estimated. Actual amounts will be available after fiscal year end and completion of audit.

The Unrestricted Fund includes those economic resources of the college which are expendable for the purpose of performing the primary missions of the institution-instruction, research, and public service - and which are not restricted by external sources or designated by the governing board of other than operating expenditures.

Note:
State Appropriations Revenues include state on-behalf benefits which are budgeted in the Unrestricted Fund and are subsequently transferred to the Restricted Fund along with related expenditures for Annual Financial Report purposes.

South Texas College
Unrestricted Fund
Detail of Revenues by Source

Comparison of Previous Fiscal Years with Fiscal Year Ending August 31, 2012

Revenue Source	FY '10 Budget (As Amended)	FY '11 Budget (As Amended)	FY '12 Budget
<i>State Contact Revenue</i>	\$ 29,065,136	\$ 28,276,040	\$ 32,241,180
<i>Other State Revenues</i>			
ORP	801,113	857,807	408,947
TRS	2,646,104	2,929,487	1,525,524
Medical Insurance	4,395,040	4,231,635	2,917,183
Total Other State Revenues	7,842,257	8,018,929	4,851,654
Total State Revenues	36,907,393	36,294,969	37,092,834
<i>Tuition</i>			
Academic	26,220,785	31,085,874	33,315,586
Differential			
Repeating a Non-Dev Studies course for the 3 or more time	440,850	557,640	-
Enrollment in Dev Studies courses over the 27 hour rule	89,550	81,120	-
Supplemental Instruction	94,710	108,840	128,040
3000/4000 level courses	118,880	130,675	205,951
Associate Degree Nursing	257,650	271,495	292,760
Occupational Therapy Assistant	21,475	29,715	49,919
Physical Therapist Assistant	21,475	29,190	32,960
Radiologic Technology	15,350	23,520	37,319
Vocational Nursing	252,150	470,330	601,881
Respiratory Therapy	41,100	31,150	21,919
Pharmacy Tech	22,100	27,825	45,360
Emergency Medical Tech	52,150	72,750	111,790
Patient Care Assistant	-	49,680	44,581
Continuing Education	1,725,749	1,774,922	1,515,815
Alternative Teacher Certification	174,553	176,681	175,005
Continuing Education - New Contracts	109,650	109,650	105,264
Foreign Nurses Certification	27,855	18,826	-
NAAMREI / IAM	535,195	-	877,849
Recovery of Cost - IAM	-	43,000	35,000
Recovery of Cost - CPWE	-	20,000	71,015
Less: Texas Public Education Grants	(1,772,072)	(2,057,743)	(2,207,535)
Total Tuition	28,449,155	33,055,140	35,460,479
<i>Fees</i>			
Student Registration Fee	3,784,724	4,406,135	4,456,098
Additional Registration Fee	651,367	732,779	1,027,502
Info Tech Fee per Credit Hour	5,048,415	7,833,129	7,921,951
Learning Support Fee per Credit Hour	2,944,380	5,874,847	5,941,463
Lab Fee per Lab Credit Hour	768,704	842,624	878,596
Electronic Distance Learning Fee	1,104,635	1,586,201	1,665,611
Physical Education Spec Activity Fee	61,791	85,484	84,679

South Texas College
Unrestricted Fund
Detail of Revenues by Source

Comparison of Previous Fiscal Years with Fiscal Year Ending August 31, 2012

Revenue Source	FY '10 Budget (As Amended)	FY '11 Budget (As Amended)	FY '12 Budget
Drop Fee	61,966	150,006	166,504
Withdrawal After Census Day Fee	40,627	125,203	135,791
Audit Fee	-	-	242
Credit by Exam by Fee	4,345	2,776	557
Installment Plan Fee	285,209	307,928	262,497
Installment Late Payment Fee	168,019	280,380	179,065
Emergency Loan Late Pmt Fee	36,449	30,714	30,170
Reinstatement Fee	27,683	38,788	59,810
Student ID Replacement Fee	2,500	26	8,327
Lost Library Book Fee	15,202	8,116	7,645
Returned Check Fee	538	79	75
Developmental Studies Fee	416,411	505,532	802,459
Dual Enrollment Late Processing Fee	6,921	6,728	2,987
Parking Fines	58,922	121,089	185,311
Parking Permit Replace Fee	-	-	38,709
Accuplacer Exam Fee	-	-	57,319
THEA / Accuplacer Reservation and Preparation Fee	128,907	128,472	2,178
NAH Student Clinical Data Fee	-	60,000	-
Higher One Replacement Card Fee	-	45,000	38,758
GED Testing	-	65,320	23,492
GED Reservation Fee	-	-	9,194
Hybrid Course Fee	-	-	75,000
Parking Permit Fee	-	-	711,450
Graduation Gown Fee	-	-	40,000
Repeating a Course for the 1 Time	-	-	491,348
Repeating a Course for the 2 Time	-	-	358,313
Repeating a Course for the 3 or More Time	-	-	136,125
Total Fees	15,617,715	23,237,356	25,799,226
Other Revenues			
Conferences - Continuing Education	71,936	71,936	64,742
Contract Instruction	52,000	60,000	10,000
Concurrent Enrollment Reimbursement Cost	1,500,000	1,800,000	1,500,000
Interest	431,468	276,080	200,000
Facility Lease - Weslaco	4,680	4,680	4,680
Pecan Plaza Leases	77,820	37,898	-
Region One Lease-Starr	74,701	74,706	50,341
Unrestricted Grants - Non Public Fund Project	25,000	-	35,000
Book Royalties - Developmental English	4,500	8,000	10,000
NES Testing	-	40,000	40,000
Administrative Cost	-	78,000	82,000
Administrative Cost - IAM	-	96,000	-
Administrative Cost - CPWE	-	115,000	78,289
Total Other Revenues	2,242,105	2,662,300	2,075,052

South Texas College
Unrestricted Fund
Detail of Revenues by Source

Comparison of Previous Fiscal Years with Fiscal Year Ending August 31, 2012

Revenue Source	FY '10 Budget (As Amended)	FY '11 Budget (As Amended)	FY '12 Budget
<i>Local Taxes</i>			
Tax Collections	30,325,492	29,612,196	28,999,650
Delinquent Tax	1,908,350	2,095,819	2,025,452
Penalties, Interest	1,010,164	1,092,188	1,001,714
Total Local Taxes	33,244,006	32,800,203	32,026,816
<i>Special Fund Balance Allocations (Carryover)</i>			
Enrollment Growth Allocation	439,398	153,213	125,369
Dramatic Enrollment Growth Allocation - Nursing	124,444	26,910	9,364
Baccalaureate Degree	523,891	442,226	360,176
Hidalgo Technology Center	500,000	500,000	-
BAT Supplement	200,000	182,464	191,497
<i>Fund Balance Allocations (Carryover)</i>			
Contingency Fund	2,200,000	2,200,000	2,200,000
Book Royalties - Developmental Studies	9,796	10,100	13,500
Non Public Fund Project	5,607	375,874	315,457
Construction Fund	6,000,000	-	-
Renewal & Replacement Fund	-	7,000,000	-
Continuing Education	-	125,000	125,000
Total Special and Fund Balance Allocations (Carryover)	10,003,136	11,015,787	3,340,363
Total Revenues	\$ 126,463,510	\$ 139,065,755	\$ 135,794,770
<i>Increase From Prior Fiscal Year</i>	<i>12,524,216</i>	<i>12,602,244</i>	<i>(3,270,985)</i>



This page intentionally left blank.

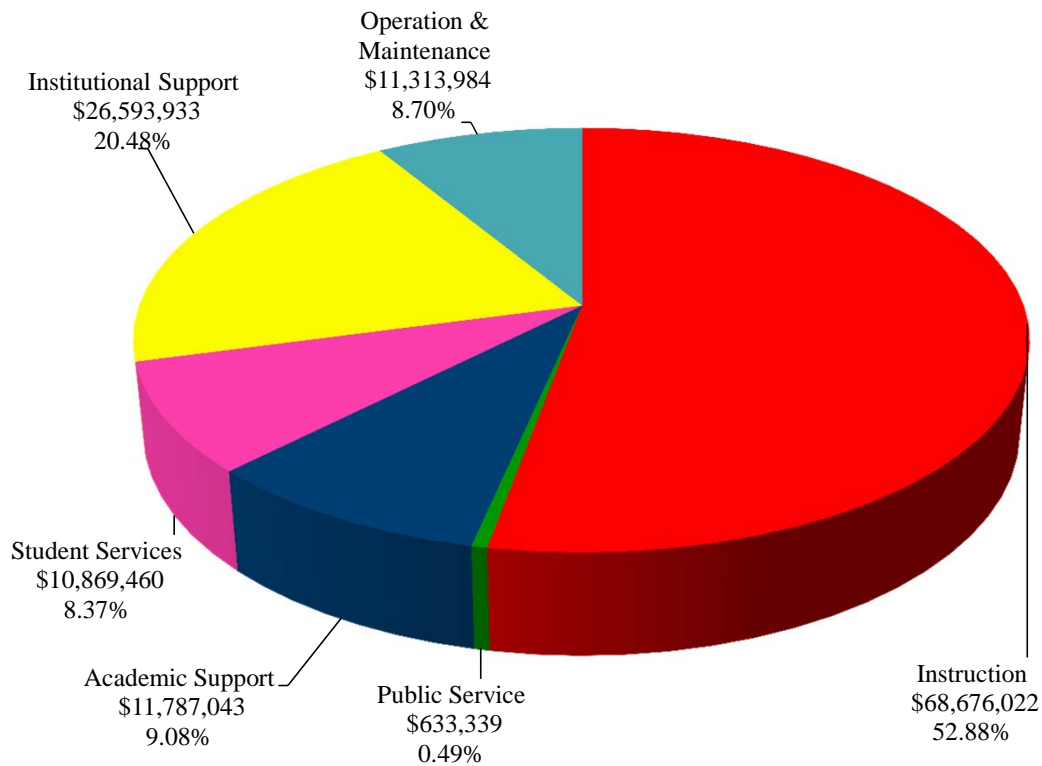


This page intentionally left blank.

**South Texas College
Unrestricted Fund
Expenditures by Function
(Without Transfers and Contingencies)**

Budget for Fiscal Year 2011 - 2012

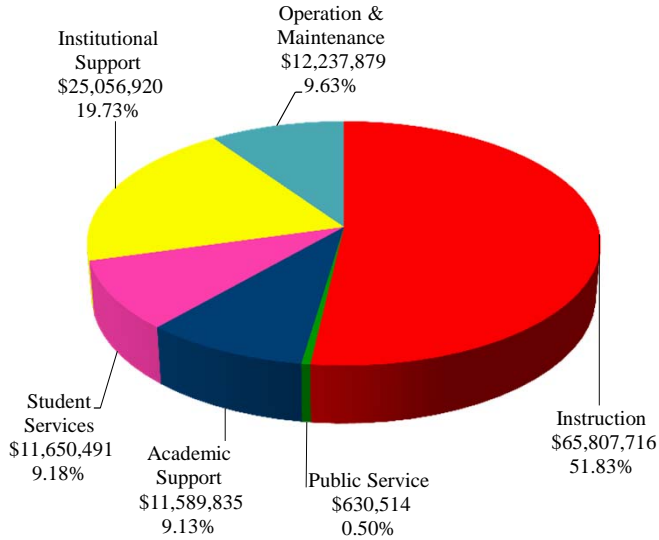
Function	FY '12 Budget	Percentage
Instruction	\$ 68,676,022	52.88%
Public Service	633,339	0.49%
Academic Support	11,787,043	9.08%
Student Services	10,869,460	8.37%
Institutional Support	26,593,933	20.48%
Operation & Maintenance	11,313,394	8.70%
Total Expenditures	\$ 129,873,191	100.00%



South Texas College Unrestricted Fund Expenditures by Function (Without Transfers and Contingencies)

Comparison of Previous Fiscal Year with Fiscal Year Ending August 31, 2012

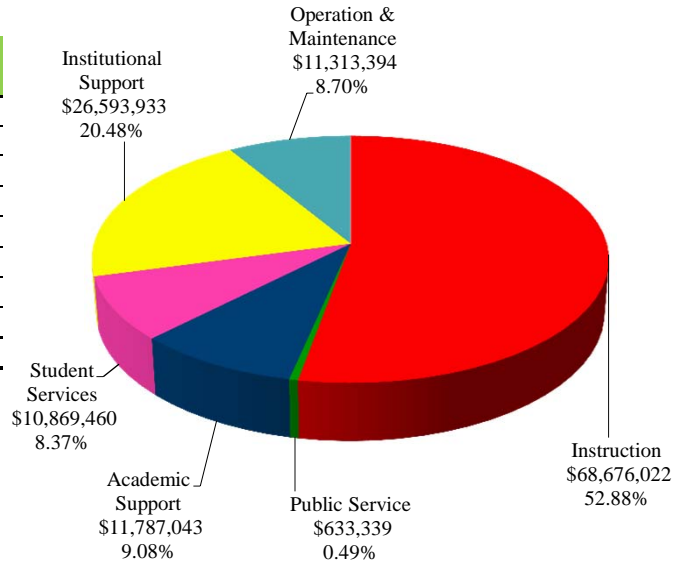
Fiscal Year 2011



Function	FY '11 Budget (As Amended)	Percentage
Instruction	\$ 65,807,716	51.83%
Public Service	630,514	0.50%
Academic Support	11,589,835	9.13%
Student Services	11,650,491	9.18%
Institutional Support	25,056,920	19.73%
Operation & Maintenance	12,237,879	9.63%
Total Expenditures	\$ 126,973,355	100.00%

Fiscal Year 2012

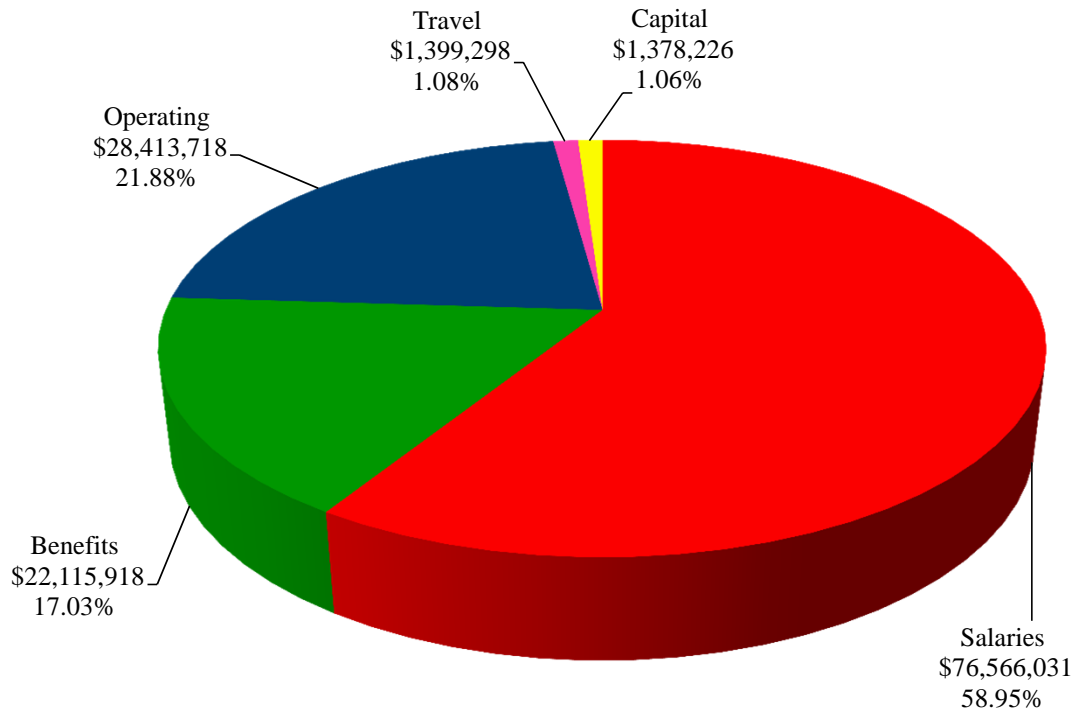
Function	FY '12 Budget	Percentage
Instruction	\$ 68,676,022	52.88%
Public Service	633,339	0.49%
Academic Support	11,787,043	9.08%
Student Services	10,869,460	8.37%
Institutional Support	26,593,933	20.48%
Operation & Maintenance	11,313,394	8.70%
Total Expenditures	\$ 129,873,191	100.00%



South Texas College
Unrestricted Fund
Expenditures by Classification
(Without Transfers and Contingencies)

Budget for Fiscal Year 2011 - 2012

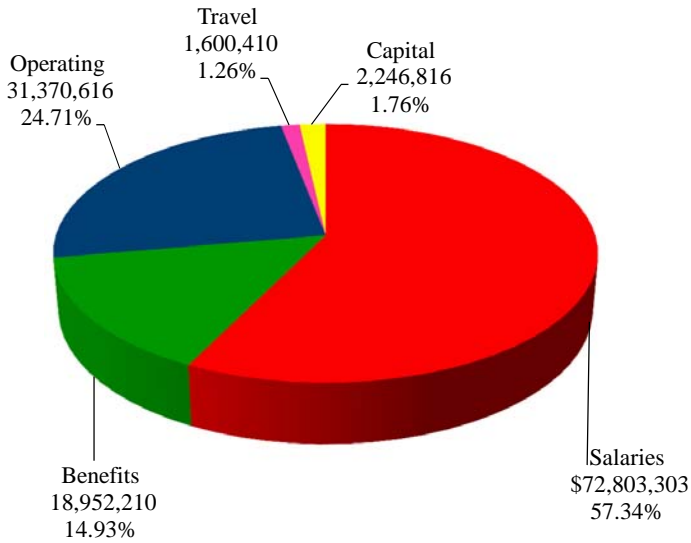
Classification	FY '12 Budget	Percentage
Salaries	\$ 76,566,031	58.95%
Benefits	22,115,918	17.03%
Operating	28,413,718	21.88%
Travel	1,399,298	1.08%
Capital	1,378,226	1.06%
Total Expenditures	\$ 129,873,191	100.00%



South Texas College Unrestricted Fund Expenditures by Classification (Without Transfers and Contingencies)

Comparison of Previous Fiscal Year with Fiscal Year Ending August 31, 2012

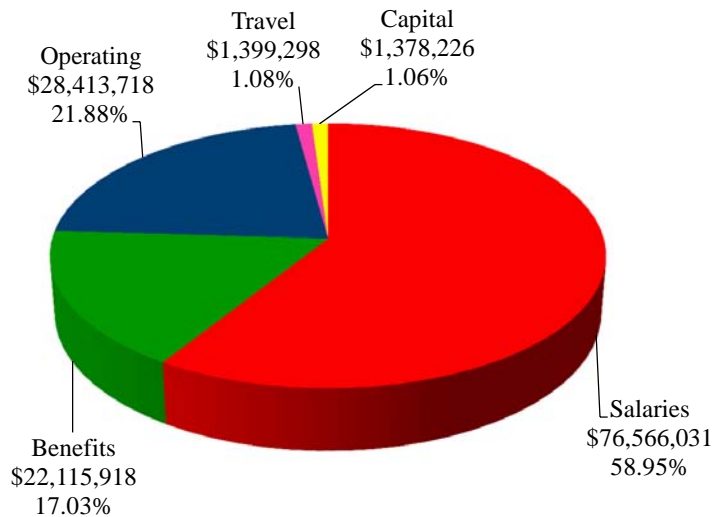
Fiscal Year 2011



Function	FY '11 Budget (As Amended)	Percentage
Salaries	\$ 72,803,303	57.34%
Benefits	18,952,210	14.93%
Operating	31,370,616	24.71%
Travel	1,600,410	1.26%
Capital	2,246,816	1.76%
Total Expenditures	\$ 126,973,355	100.00%

Fiscal Year 2012

Function	FY '12 Budget	Percentage
Salaries	\$ 76,566,031	58.95%
Benefits	22,115,918	17.03%
Operating	28,413,718	21.88%
Travel	1,399,298	1.08%
Capital	1,378,226	1.06%
Total Expenditures	\$ 129,873,191	100.00%



South Texas College
Unrestricted Fund
Summary of Expenditures by Function and Classification
Budget for Fiscal Year 2011-2012

Function / Classification	Salaries	Percent of Total	Benefits	Percent of Total	Operating	Percent of Total
Instruction	\$ 47,669,951	62.26%	\$ 13,744,504	62.15%	\$ 6,434,317	22.65%
Public Service	343,562	0.45%	61,924	0.28%	194,323	0.68%
Academic Support	6,948,088	9.07%	1,878,817	8.50%	2,522,104	8.88%
Student Services	7,019,048	9.17%	2,030,726	9.18%	1,490,296	5.24%
Institutional Support	11,516,922	15.04%	3,438,716	15.55%	10,528,975	37.06%
Operation & Maintenance - Plant	3,068,460	4.01%	961,231	4.34%	7,243,703	25.49%
Total - Without Transfers & Contingencies	76,566,031	100.00%	22,115,918	100.00%	28,413,718	100.00%
Percent of Total Expenditures Without Transfers & Contingencies	58.95%		17.03%		21.88%	
Transfers and Contingencies						
Transfer-Construction Fund	-		-		2,500,000	
Transfer-PPFCO Debt	-		-		-	
Transfer-MTR Bond Series 2007	-		-		396,400	
Transfer-NAAMREI/IAM	-		-		825,179	
Contingency	-		-		2,200,000	
Total Transfers and Contingencies	-		-		5,921,579	
Total Unrestricted Budget Expenditures/Transfers/Contingencies	\$ 76,566,031		\$ 22,115,918		\$ 34,335,297	
Percent of Total Expenditures With Transfers & Contingencies	56.38%		16.29%		25.28%	

South Texas College
Unrestricted Fund
Summary of Expenditures by Function and Classification
Budget for Fiscal Year 2011-2012

(Continued)

Travel	Percent of Total	Capital	Percent of Total	Total	Percent of Total Budget W/O Trans/Cont	Percent of Total Budget With Trans/Cont
\$ 675,349	48.26%	\$ 151,900	11.02%	\$ 68,676,022	52.88%	50.57%
33,530	2.40%	-	0.00%	633,339	0.49%	0.47%
229,440	16.40%	208,594	15.13%	11,787,043	9.08%	8.68%
180,048	12.87%	149,342	10.84%	10,869,460	8.37%	8.00%
240,930	17.22%	868,390	63.01%	26,593,933	20.48%	19.58%
40,000	2.85%	-	0.00%	11,313,394	8.70%	8.34%
1,399,298	100.00%	1,378,226	100.00%	129,873,191	100.00%	
1.08%		1.06%		100.00%		
-		-		2,500,000		
-		-		-		
-		-		396,400		
-		-		825,179		
-		-		2,200,000		
-		-		5,921,579		4.36%
\$ 1,399,298		\$ 1,378,226		\$ 135,794,770		100.00%
1.03%		1.02%		100.00%		

South Texas College
Unrestricted Fund
Summary of Expenditures by Function - Budget and Actual

Comparison of Previous Fiscal Years with Fiscal Year Ending August 31, 2012

Functions	FY '10 Budget (As Amended)	FY '10 Actual	FY '11 Budget (As Amended)	FY '11 Estimated*	FY '12 Budget
Instruction	\$ 60,620,355	\$ 53,279,206	\$ 65,807,716	\$ 59,004,938	\$ 68,676,022
Public Service	491,644	511,389	630,514	360,498	633,339
Academic Support	8,987,198	7,647,836	11,589,835	10,168,090	11,787,043
Student Services	10,876,390	9,582,193	11,650,491	9,679,772	10,869,460
Institutional Support	22,274,684	18,715,683	25,056,920	20,060,534	26,593,933
Operation & Maintenance - Plant	11,616,896	10,447,180	12,237,879	10,185,986	11,313,394
Total Expenditures by Function	114,867,167	100,183,487	126,973,355	109,459,818	129,873,191
Transfers and Contingencies					
Transfer-Unexpended Construction Fund	8,500,000	8,500,000	2,500,000	2,500,000	2,500,000
Transfer-Renewals & Replacement Fund	-	-	7,000,000	7,000,000	-
Transfer-PPFCO Debt	265,460	324,360	-	-	-
Transfer-MTR Bond Series 2007	127,800	68,900	392,400	58,700	396,400
Transfer to NAAMREI / IAM	503,083	600,532	-	-	825,179
Contingency	1,000,000	-	1,000,000	-	1,000,000
Insurance Contingency	1,200,000	-	1,200,000	-	1,200,000
Total Transfers and Contingencies	11,596,343	9,493,792	12,092,400	9,558,700	5,921,579
Total Unrestricted Expenditures by Function/Transfers/Contingencies	\$ 126,463,510	\$ 109,677,279	\$ 139,065,755	\$ 119,018,518	\$ 135,794,770

* Amounts are estimated. Actual amounts will be available after fiscal year end and completion of audit.

South Texas College
Unrestricted Fund
Summary of Expenditures by Classification - Budget and Actual

Comparison of Previous Fiscal Years with Fiscal Year Ending August 31, 2012

Classifications	FY '10 Budget (As Amended)	FY '10 Actual	FY '11 Budget (As Amended)	FY '11 Estimated*	FY '12 Budget
Salaries	\$ 66,120,227	\$ 62,965,565	\$ 72,803,303	\$ 70,999,728	\$ 76,566,031
Benefits	17,817,308	15,181,000	18,952,210	17,411,026	22,115,918
Operating	27,733,321	19,267,020	31,370,616	18,673,503	28,413,718
Travel	1,433,388	1,191,875	1,600,410	1,181,911	1,399,298
Capital	1,762,923	1,578,027	2,246,816	1,193,650	1,378,226
Total Expenditures by Classification	114,867,167	100,183,487	126,973,355	109,459,818	129,873,191
Transfers and Contingencies					
Transfer-Unexpended Construction Fund	8,500,000	8,500,000	2,500,000	2,500,000	2,500,000
Transfer-Renewals and Replacement Fund	-	-	7,000,000	7,000,000	-
Transfer-PPFCO Debt	265,460	324,360	-	-	-
Transfer-MTR Bond Series 2007	127,800	68,900	392,400	58,700	396,400
Transfer to NAAMREI / IAM	503,083	600,532	-	-	825,179
Contingency	1,000,000	-	1,000,000	-	1,000,000
Insurance Contingency	1,200,000	-	1,200,000	-	1,200,000
Total Transfers and Contingencies	11,596,343	9,493,792	12,092,400	9,558,700	5,921,579
Total Unrestricted Expenditures by Classifications/Transfers/Contingencies	\$ 126,463,510	\$ 109,677,279	\$ 139,065,755	\$ 119,018,518	\$ 135,794,770

* Amounts are estimated. Actual amounts will be available after fiscal year end and completion of audit.



This page intentionally left blank.

South Texas College
Unrestricted Fund
Detail of Expenditures by Function, Classification and Organization
Budget for Fiscal Year 2011 - 2012

Organization	Salaries	Benefits	Operating	Travel	Capital	Total
100016 Unallocated Funds			1,293,456			1,293,456
100018 Instructional Initiative	25,000	7,890	45,000			77,890
210005 Equipment-New Faculty/Programs			28,000			28,000
210006 Adjunct Faculty	18,872,408	4,407,475		311,897		23,591,780
210009 Instructional Initiative Reserve			4,000	1,000		5,000
210010 Student Employees	53,751	4,838				58,589
210014 Honors Program			5,850	3,150		9,000
210025 BAT Startup			293,665			293,665
210027 Student Learning & Achievement	114,382	36,099	4,550	4,000		159,031
210028 Quality Enhancement Plan	64,000	5,760	275,363	16,000		361,123
210030 Academic Excellence	86,812	27,397				114,209
211001 Distance Education-Instructional	457,503	132,206	107,749	20,000		717,458
211002 Distance Ed Instructional Tech			179,800	12,000		191,800
215001 Valley Scholars-Academic Affairs	35,000	3,150				38,150
221101 Accounting	215,154	67,903	5,195	2,303		290,555

South Texas College
Unrestricted Fund
Detail of Expenditures by Function, Classification and Organization
Budget for Fiscal Year 2011 - 2012

Organization	Salaries	Benefits	Operating	Travel	Capital	Total
221102 Economics	263,939	83,299	4,295	658		352,191
221103 Business Administration	524,451	165,517	24,033	1,877		715,878
221104 Business Computer Systems	521,685	164,643	18,823	7,876		713,027
221105 Computer Science	591,370	186,635	78,418	12,243		868,665
221106 Culinary Arts	155,798	46,350	33,322	450		235,920
221107 Paralegal	95,193	30,043	6,580	987		132,803
221108 Administrative Office Careers	354,365	111,837	13,817	2,303		482,322
221110 Human Resources Specialist	45,000	14,202	4,950	405		64,557
221111 Construction Supervision			5,000	1,500		6,500
221201 Mathematics	1,261,192	398,032	40,500	9,500		1,709,224
221301 Biology	1,877,682	592,596	140,000	14,000		2,624,278
221302 Engineering	45,000	14,202	20,000	1,215		80,417
221303 Physics	690,691	217,982	90,000	3,654		1,002,327
221304 Chemistry	369,307	116,553	50,000	4,620	30,000	570,480
221307 Agriculture			4,900	1,000		5,900

South Texas College
Unrestricted Fund
Detail of Expenditures by Function, Classification and Organization
Budget for Fiscal Year 2011 - 2012

Organization	Salaries	Benefits	Operating	Travel	Capital	Total
221308 Fire Science	48,000	15,149	31,500	1,350		95,999
221402 Automotive Technology	505,599	156,746	62,737	4,980		730,062
221404 CADD	407,866	128,722	93,249	4,050		633,887
221405 Electronic & Computer Maintenance	487,659	153,904	42,738	8,933		693,234
221407 HVACR	255,204	80,542	30,479	3,096		369,321
221409 Precision Manufacturing	113,636	35,864	21,870	5,728		177,098
221410 Mechatronics			20,000	5,000		25,000
221413 Electrician Assistant	119,330	37,661	16,650	1,215		174,856
221415 Welding	120,500	38,030	67,050	4,500		230,080
221417 Plumber Assistant	3,000	947	8,100	1,215		13,262
221418 Diesel Technology	102,905	32,476	7,650	1,800		144,831
222001 Developmental Math	1,384,339	436,897	48,000	4,500		1,873,736
222002 College Success	355,795	112,287	8,886	2,430		479,398
222003 Developmental Reading	798,042	251,865	18,000	2,800		1,070,707
222005 Developmental Exit Test			100,251			100,251

South Texas College
Unrestricted Fund
Detail of Expenditures by Function, Classification and Organization
Budget for Fiscal Year 2011 - 2012

Organization	Salaries	Benefits	Operating	Travel	Capital	Total
222008 Developmental English	660,573	208,478	22,000	2,552		893,603
222009 Book Royalties-Dev English			13,500			13,500
223001 Art	637,973	201,345	20,000	7,000		866,318
223002 Music	104,366	32,938	7,200	1,500		146,004
223003 Speech	731,065	230,722	7,575	8,400		977,762
223004 Drama	46,500	14,675	19,812	3,500		84,487
223006 English	1,924,078	607,239	21,613	22,183		2,575,112
223007 Political Science	1,090,062	344,026	15,700	11,030		1,460,818
223008 World Language Department	554,809	175,097	15,000	3,700		748,606
223010 Social Science			12,069			12,069
223013 Women Studies			7,000			7,000
223019 Philosophy	441,347	139,289	5,850	5,925		592,411
223020 History	1,112,606	351,142	16,188	11,500		1,491,436
223021 Child Development	331,248	104,542	8,693	4,273		448,756
223022 Education	323,904	102,224	11,259	7,528		444,914

South Texas College
Unrestricted Fund
Detail of Expenditures by Function, Classification and Organization
Budget for Fiscal Year 2011 - 2012

Organization	Salaries	Benefits	Operating	Travel	Capital	Total
223023 Criminal Justice	316,706	99,954	7,500	6,500		430,660
223024 Sociology	322,735	101,856	8,250	4,500		437,341
223025 Psychology	704,217	222,253	11,000	8,000		945,470
223026 Social Work (SOCW)	64,351	20,309	2,000	1,500		88,160
223027 Kinesiology	338,191	106,733	14,984	1,000		460,908
223029 Student Activities Programming			154,019	4,500		158,519
223033 MV-Child Care & Development (Unres)	206,411	65,145				271,556
223036 Anthropology	43,419	13,703	2,000	1,500		60,622
223044 Center for Mexican American Studies			5,820			5,820
223045 Mexican American Studies			8,000			8,000
224002 Occupational Therapy	274,166	82,015	15,260	4,650		376,091
224003 Emergency Medical Technology	338,746	96,756	30,000	2,565		468,067
224004 Physical Therapy	286,090	85,778	16,799	3,903		392,570
224005 Associate Degree Nursing	1,654,956	522,305	51,300	10,260	72,900	2,311,721
224006 Patient Care Assistant	107,547	33,942	13,500	1,995		156,984

South Texas College
Unrestricted Fund
Detail of Expenditures by Function, Classification and Organization
Budget for Fiscal Year 2011 - 2012

Organization	Salaries	Benefits	Operating	Travel	Capital	Total
224007 Medical Asst Technology	107,311	33,867	11,479	1,170		153,827
224008 Health Information	184,838	58,334	9,234	1,026		253,432
224009 Medical Information	98,906	31,214	11,543	1,283		142,946
224010 Pharmacy Technology	123,530	38,987	30,690	1,140		194,347
224011 Radiologic Technology	235,761	74,407	12,500			322,668
224012 Clinical Tracking Program			60,000			60,000
224015 Enrollment Growth-NAH			6,000	3,364		9,364
224018 Vocational Nursing	1,360,525	421,486	74,858	8,118		1,864,986
224025 Respiratory Therapy	160,031	50,506	40,250	2,500	19,000	272,287
225005 Bachelor Prgm & Univ Relations	142,071	44,837	24,000	8,100		219,008
225006 BAT Supplement			181,497			181,497
225007 BAT-Tech Mgmt/Comp Info Tech	144,464	45,593	5,000	5,000		200,057
400100 Insurance Reserve-Instruction			1,321,247			1,321,247
400110 Unemployment Insurance-Instruction		421,643				421,643
500010 Technology Renewal Fund			350,000			350,000

South Texas College
Unrestricted Fund
Detail of Expenditures by Function, Classification and Organization
Budget for Fiscal Year 2011 - 2012

Organization	Salaries	Benefits	Operating	Travel	Capital	Total
510001 Adm Comp Sys-Intruction-Training			96,040			96,040
520001 Distance Education Technology	20,000	1,800	191,500	2,987	30,000	246,287
600007 CPWE - State	1,054,888	243,665	110,164	16,464		1,425,181
<i>Instruction</i>	<i>\$47,669,951</i>	<i>\$13,744,504</i>	<i>\$6,434,317</i>	<i>\$675,349</i>	<i>\$151,900</i>	<i>\$68,676,022</i>

South Texas College
Unrestricted Fund
Detail of Expenditures by Function, Classification and Organization
Budget for Fiscal Year 2011 - 2012

Organization	Salaries	Benefits	Operating	Travel	Capital	Total
223009 Art Speakers			2,010			2,010
360006 GED Testing Center			13,790	1,600		15,390
400101 Insurance Reserve-Public Service			2,824			2,824
400111 Unemployment Insurance-Public Svc		14,310				14,310
510002 Adm Comp Sys-Public Srvc Training			880			880
600002 Workforce Develop & External Affair	1					1
610030 CPWE - Non State	125,000	11,250	4,356			140,606
610031 CPWE - Conferences			62,312	2,430		64,742
610035 CPWE-New Contracts	94,561	8,510				103,071
610038 CPWE - Carryover			100,000	25,000		125,000
610040 Alternative Teacher Certification	124,000	27,854	8,151	4,500		164,505
Public Service	\$343,562	\$61,924	\$194,323	\$33,530	\$0	\$633,339

South Texas College
Unrestricted Fund
Detail of Expenditures by Function, Classification and Organization
Budget for Fiscal Year 2011 - 2012

Organization	Salaries	Benefits	Operating	Travel	Capital	Total
100002 Professional Development			65,000			65,000
100040 Non Public Fund Project			350,457			350,457
141007 Police Academy Non-Credit	10,000	900	13,000	4,000		27,900
141008 New Program Start Up Non-Credit	7,000	630	4,000	2,000		13,630
210002 Academic Affairs _ VP Admin	492,327	130,982	11,500	9,000		643,809
210008 Academic Affairs Support			21,000	8,500		29,500
210015 Student Employee-Academic Support	3,250	293				3,543
210031 Academic Advancement			12,931	11,000		23,931
212003 HS Programs and Services	380,993	117,379	9,000	6,300		513,672
212004 HS Programs and Services-Director			3,000	7,000		10,000
212005 DE Medical Science Academy-Starr			4,050	5,500		9,550
212006 DE Medical Science Academy-Pecan			4,050	5,500		9,550
212007 DE Medical Science Academy-MV			4,050	5,500		9,550
212008 DE Engineering Academy-Pecan			4,050	5,500		9,550
212010 DE Engineering Academy-MV			4,050	5,500		9,550

South Texas College
Unrestricted Fund
Detail of Expenditures by Function, Classification and Organization
Budget for Fiscal Year 2011 - 2012

Organization	Salaries	Benefits	Operating	Travel	Capital	Total
212012 DE Early College High School Progm	20,174	6,367	4,500	4,500		35,541
212014 DE Quality Sustainability			5,400	3,600		9,000
212015 DE Computer Science Academy-Starr			4,050	5,500		9,550
213001 Curriculum & Accreditation	200,374	63,238	18,300	9,000		290,912
214001 Office of Professional Development	174,894	53,166	72,900	11,300		312,260
221001 Division of Business & Technology	232,976	64,582	17,820	4,050		319,428
221002 Division of Math & Science	128,316	40,497	16,000	5,350		190,163
222004 Adjunct Faculty Pecan Campus			16,000			16,000
223012 Div Liberal Arts & Social Sciences	481,793	152,054	47,930	12,000		693,777
224013 Div Nursing & Allied Health	178,603	56,366	28,000	6,100	8,000	277,069
225012 Professional Devel Instruct Initiat			20,700	13,500		34,200
300001 Distinguished Speaker Series			5,000	3,240		8,240
320004 Centers for Learning Excellence	1,153,220	198,140	55,000	15,000		1,421,360
320008 Center Learning Excellence-Printing			18,580			18,580
320009 CLE Online Tutoring			70,000			70,000

South Texas College
Unrestricted Fund
Detail of Expenditures by Function, Classification and Organization
Budget for Fiscal Year 2011 - 2012

Organization	Salaries	Benefits	Operating	Travel	Capital	Total
400102 Insurance Reserve-Academic Support			279,294			279,294
400112 Unemployment Insurance-Acad Supp		47,912				47,912
510003 Adm Comp Sys-Acad Support Training			15,120			15,120
530001 Library Services	127,609	35,629	41,397	4,500		209,135
530002 Library Acquisition	469,039	134,493	316,094	3,000	173,683	1,096,309
530006 Library Information Commons			39,000			39,000
530008 BAT and Support Materials			7,500		26,911	34,411
530010 Library Art Gallery	51,474	12,410	19,000	3,000		85,884
530012 Library Programming & Community Svc			17,000			17,000
530013 Library Public Services	1,214,889	330,067	24,500	7,000		1,576,456
540001 Instructional Technologies	900,687	238,817	189,890	30,000		1,359,394
540005 Instructional Resource Open Lab	720,470	194,895	272,941	13,500		1,201,806
540008 Inst Tech Maintenance & Replacement			390,050			390,050
Academic Support	\$6,948,088	\$1,878,817	\$2,522,104	\$229,440	\$208,594	\$11,787,043

South Texas College
Unrestricted Fund
Detail of Expenditures by Function, Classification and Organization
Budget for Fiscal Year 2011 - 2012

Organization	Salaries	Benefits	Operating	Travel	Capital	Total
215003 Valley Scholars-Student Services			19,665	4,745		24,410
300002 Graduation			107,550			107,550
300003 Student Services Development	701,633	202,100	23,580	7,200		934,513
310012 Financial Aid	1,059,470	311,624	125,000	25,590		1,521,684
320001 Admissions & Records	982,683	244,564	86,079	13,500	149,342	1,476,168
320002 Student Outreach Center	534,901	159,791	150,000	24,000		868,692
320003 Student Information Center	416,142	104,265	39,700	8,000		568,107
320011 Division of SAEM			29,700			29,700
330001 Career Planning	52,243	16,488	24,445	3,065		96,241
330003 Counseling & Advising	1,626,793	474,667	58,867	20,855		2,181,182
330004 Interpreter Services	204,612	64,576	46,899	8,105		324,192
331001 Student Placement	172,220	54,352	25,348	4,138		256,058
340001 Special Programs			5,000	5,000		10,000
350001 Student Affairs	256,130	74,066	6,000	4,000		340,196
350002 Student Life	603,024	174,073	149,050	16,000		942,147

South Texas College
Unrestricted Fund
Detail of Expenditures by Function, Classification and Organization
Budget for Fiscal Year 2011 - 2012

Organization	Salaries	Benefits	Operating	Travel	Capital	Total
350030 Stu Edu & Leadrship Speaker Series			16,000	4,000		20,000
350031 Behavioral Intervention Team			4,000	6,000		10,000
360001 Student Assessment Center	409,197	124,269	152,779	18,850		705,095
360002 Student Assessment Center - MV			36,144	7,000		43,144
360005 Accuplacer Examination			72,576			72,576
400103 Insurance Reserve-Student Services			297,874			297,874
400113 Unemployment Insurance-Stu Svcs		25,891				25,891
510004 Adm Comp Sys-Student Srvc Training			14,040			14,040
<i>Student Services</i>	<i>\$7,019,048</i>	<i>\$2,030,726</i>	<i>\$1,490,296</i>	<i>\$180,048</i>	<i>\$149,342</i>	<i>\$10,869,460</i>

South Texas College
Unrestricted Fund
Detail of Expenditures by Function, Classification and Organization
Budget for Fiscal Year 2011 - 2012

Organization	Salaries	Benefits	Operating	Travel	Capital	Total
100003 Institutional Member			110,000			110,000
100004 Office of President	509,919	160,930	45,000	10,800		726,649
100005 Board of Trustees			18,000	22,500		40,500
100014 Institutional Advancement	2		9,000			9,002
100030 Redistricting			30,000			30,000
120000 Public Relations/Marketing	753,168	213,786	765,000	31,500	5,000	1,768,454
120001 Catalogs & Brochures			242,000			242,000
120002 Printing Department			48,000			48,000
120022 PR-Promotional/Marketing			60,000			60,000
141001 Accountability & Management Svcs	291,360	91,953	6,705	4,860		394,878
141002 Grant Development & Compliance	172,993	54,597	8,640	3,240		239,470
141003 Community Engagement & Wrkforce Dev	189,109	56,299	3,500	4,000		252,908
141004 Comm Engagement & Ext Affairs (AtD)			36,005	15,750		51,755
141006 Ctr for Hisp Study Success & Acad E	50,000	4,500	27,000	1,500		83,000
210011 Accreditation			6,000	3,900		9,900

South Texas College
Unrestricted Fund
Detail of Expenditures by Function, Classification and Organization
Budget for Fiscal Year 2011 - 2012

Organization	Salaries	Benefits	Operating	Travel	Capital	Total
210033 Instructional Marketing - AVP			5,000			5,000
217101 Mid Valley Campus	207,680	65,545	27,000	1,350		301,575
217301 Starr County Campus	138,292	43,645	14,450	4,000		200,387
217401 Technology Campus			5,494			5,494
221010 Instr Marketing - Math & Science			5,000			5,000
221422 Instructional Marketing - Tech			5,000			5,000
223055 Instructional Marketing - LASS			5,000			5,000
224024 Instructional Marketing - NAH			5,000			5,000
400001 Legal Services			150,000			150,000
400002 Audit Services	1		225,000			225,001
400003 Finance & Administrative Services	947,789	238,211	15,300	8,190		1,209,490
400013 Records Retention			20,000			20,000
400030 Election			195,000			195,000
400104 Insurance Reserve-Institutional Sup			434,578			434,578
400114 Unemployment Insurance-Institut Sup		43,851				43,851

South Texas College
Unrestricted Fund
Detail of Expenditures by Function, Classification and Organization
Budget for Fiscal Year 2011 - 2012

Organization	Salaries	Benefits	Operating	Travel	Capital	Total
410005 Armored Car Svcs			30,000			30,000
410011 Fees and Other Charges			85,000			85,000
410012 Bond/Arbitrage/Disclosure			15,000			15,000
410013 Business Office	1,678,350	512,995	335,000	20,000	250,000	2,796,345
410015 Credit Card Charges			270,000			270,000
410017 Hidalgo Appraisal/Collection Fee			520,000			520,000
410018 Starr Appraisal/Collection Fee			185,000			185,000
410050 Cashiers Office	613,653	160,656	95,000	14,000		883,309
410074 Uncollectible Accounts - 2011			1,260,000			1,260,000
420001 Postage			220,000			220,000
420002 Copy Center			40,000			40,000
420003 Distribution Center	100,466	31,707	15,000		25,000	172,173
420004 Central Receiving	257,644	81,311	20,000	1,000		359,955
420005 Inventory Control			12,000		45,000	57,000
420006 Loss Fund			75,000			75,000

South Texas College
Unrestricted Fund
Detail of Expenditures by Function, Classification and Organization
Budget for Fiscal Year 2011 - 2012

Organization	Salaries	Benefits	Operating	Travel	Capital	Total
420007 Purchasing	443,176	139,867	78,400	8,547		669,990
431010 Shuttle Buses			25,000			25,000
450001 General Services	43,775	13,815				57,590
450002 Security	361,071	80,114	1,661,075	4,500	273,590	2,380,350
460001 Human Resources	885,450	269,297	214,133	31,500		1,400,380
470002 Risk Management			5,000	4,000		9,000
500001 Technology Resource Fund			100,000			100,000
500002 Information Services & Planning	515,910	133,044	12,000	4,000		664,954
510005 ITS Project Manager	75,868	23,944	331,440		111,000	542,252
510006 Adm Comp Sys-Inst Supp Training			36,880			36,880
510010 Document Imaging (DI)-I/S Admin			40,000			40,000
511001 Client Services	283,185	84,184	139,483	675		507,527
512001 Information Security			98,350	3,000		101,350
520002 Phones Central Office	105,682	33,353	900,543	9,240	70,000	1,118,818
520003 Technology Resources	457,306	144,325	14,750			616,381

South Texas College
Unrestricted Fund
Detail of Expenditures by Function, Classification and Organization
Budget for Fiscal Year 2011 - 2012

Organization	Salaries	Benefits	Operating	Travel	Capital	Total
520004 Information Technology	1,391,102	439,031	919,688		80,000	2,829,821
520005 Technology Support	491,347	150,559	151,486	7,128	8,800	809,320
550001 Research and Analytical Services	347,296	106,111	68,475	12,750		534,632
550002 Inst'l Effectiveness and Assessment	205,328	61,086	28,600	9,000		304,014
<i>Institutional Support</i>	<i>\$11,516,922</i>	<i>\$3,438,716</i>	<i>\$10,528,975</i>	<i>\$240,930</i>	<i>\$868,390</i>	<i>\$26,593,933</i>

South Texas College
Unrestricted Fund
Detail of Expenditures by Function, Classification and Organization
Budget for Fiscal Year 2011 - 2012

Organization	Salaries	Benefits	Operating	Travel	Capital	Total
400005 Insurance			750,000			750,000
400105 Insurance Reserve-Oper & Maint			164,183			164,183
400115 Unemployment Insurance-O&M		19,008				19,008
430001 Dir Fac Planning & Construction	304,529	96,109	34,000	23,000		457,638
430002 Institutional Moves			15,000			15,000
430012 Physical Education Facility Rental			42,000			42,000
430015 Lease-NAH El Milagro Parking Lot			1,000			1,000
430016 Custodial Fees-UTPA McAllen Teach			15,000			15,000
430017 Custodial Fees-La Joya Teach Site			15,000			15,000
430018 New Furniture			80,000			80,000
450003 Operations & Maintenance	297,650	93,938	20,000	3,000		414,588
450004 Custodial	1,475,965	439,634	492,000	3,000		2,410,599
450005 Vehicle Maintenance			6,000			6,000
450006 Facility Maintenance	990,316	312,542	895,000	5,000		2,202,858
450007 Grounds Maintenance			360,000			360,000

South Texas College
Unrestricted Fund
Detail of Expenditures by Function, Classification and Organization
Budget for Fiscal Year 2011 - 2012

Organization	Salaries	Benefits	Operating	Travel	Capital	Total
450008 Mechanical System Maintenance			300,000			300,000
450009 Safety/Environmental			85,000	6,000		91,000
450011 Util - 2501 Pecan			54,000			54,000
450016 Util - Pecan Campus			1,757,000			1,757,000
450019 Util - Mid Valley Campus			730,000			730,000
450020 Util - Technology Campus			488,000			488,000
450021 Util - Starr Campus			442,000			442,000
450022 Util - NAH Campus			267,000			267,000
450023 Util - Pecan Plaza			62,000			62,000
450035 Repair and Maintenance			150,000			150,000
510007 Adm Comp Sys - O&M Training			19,520			19,520
Operation and Maintenance	\$3,068,460	\$961,231	\$7,243,703	\$40,000	\$0	\$11,313,394

South Texas College
Unrestricted Fund
Detail of Expenditures by Function, Classification and Organization
Budget for Fiscal Year 2011 - 2012

Organization	Salaries	Benefits	Operating	Travel	Capital	Total
100006 Contingency-Reserve			2,200,000			2,200,000
100009 Reserve-Building Fund			2,500,000			2,500,000
400040 Transfer-2007 MTR Debt			396,400			396,400
400050 Transfer - NAAMREI/IAM			825,179			825,179
Transfers	\$0	\$0	\$5,921,579	\$0	\$0	\$5,921,579
Total Expenditures	\$76,566,031	\$22,115,918	\$34,335,297	\$1,399,298	\$1,378,226	\$135,794,770



This page intentionally left blank.

South Texas College
Unrestricted Fund
Summary of Capital Expenditures by Function and Organization

Budget for Fiscal Year 2012

Organization Name	Organization Code	Total
Instruction		
Chemistry	221304	30,000
Associate Degree Nursing	224005	72,900
Respiratory Therapy	224025	19,000
Distance Education Technology	520001	30,000
Instruction Total		151,900
Academic Support		
Div Nursing & Allied Health	224013	8,000
Library Acquisition	530002	173,683
BAT and Support Materials	530008	26,911
Academic Support Total		208,594
Student Services		
Admissions & Records	320001	149,342
Student Services Total		149,342
Institutional Support		
Public Information	120000	5,000
Business Office	410013	250,000
Distribution Center	420003	25,000
Inventory Control	420005	45,000
Security	450002	273,590
ITS Project Manager	510005	111,000
Phones Central Office	520002	70,000
Information Technology	520004	80,000
Technology Support	520005	8,800
Institutional Support Total		868,390
Total Capital Expenditures		\$ 1,378,226

South Texas College
Unrestricted Fund
Detail of Capital Expenditures by Function and Organization
Budget for Fiscal Year 2011 - 2012

Organization Name	Organization Code	Item	Qty	Unit Cost	Total Cost
Instruction					
Chemistry	221304	Infrared spectrometer for Organic Chemistry	1	30,000	30,000
Associate Degree Nursing	224005	Furniture and equipment	1	72,900	72,900
Respiratory Therapy	224025	ZPAP machine	1	5,500	5,500
		Ventilator	1	7,500	7,500
		Hospital bed	1	6,000	6,000
Distance Education Technology	520001	Clarion storage	1	30,000	30,000
Instruction Total					151,900
Academic Support					
Div Nursing & Allied Health	224013	Color printer	1	8,000	8,000
Library Acquisition	530002	Books and videos	1	173,683	173,683
BAT and Support Materials	530008	BAT- TMGT books and videos	1	8,304	8,304
		BAT-CIT books and videos	1	8,304	8,304
		New BA program	1	10,303	10,303
Academic Support Total					208,594
Student Services					
Admissions & Records	320001	DegreeWorks degree audit system	1	149,342	149,342
Student Services Total					149,342
Institutional Support					
Public Information	120000	HP color printer	1	5,000	5,000
Business Office	410013	Timekeeping system	1	217,275	217,275
		Travel & expense module	1	27,725	27,725
		Xtender licenses	1	5,000	5,000
Inventory Control	420005	Cargo truck	1	45,000	45,000
Distribution Center	420003	Cargo van	1	25,000	25,000
Security	450002	Security equipment	1	44,600	44,600
		Security camera equipment	1	163,100	163,100
		Mass notification system	1	61,000	61,000
		State license plate database	1	1,090	1,090
		Ticket writer maintenance	1	3,800	3,800
ITS Project Manager	510005	Oracle licenses	1	111,000	111,000
Phones Central Office	520002	Campus fiber upgrade	1	70,000	70,000
Information Technology	520004	Equallogic storage	1	50,000	50,000
		Clarion CX-240 DEA	1	30,000	30,000
Technology Support	520005	Desktop virtualization project	1	8,800	8,800
Institutional Support Total					868,390
Total Capital Expenditures					\$ 1,378,226

South Texas College
Auxiliary Fund
Detail of Revenues by Source

Comparison of Previous Fiscal Years with Fiscal Year Ending August 31, 2012

Revenue Source	FY '10 Budget	FY '11 Budget	FY '12 Budget
Bookstore	\$ 400,000	\$ 420,000	\$ 572,000
Interest Income	2,977	938	712
Food Service	702,000	791,817	812,000
Vending Machines	221,645	189,073	176,400
Wellness Center	48,793	104,000	84,400
Fund Balance Reserve - Starr County	300,000	500	750
Professional Development Conferences	80,000	80,000	80,000
General Conferences	100,000	100,000	100,000
MV-Child Care & Development	226,800	374,200	353,800
Student Copier	-	30,000	35,200
Self Supporting Conferences	-	-	33,253
Total Revenues	\$ 2,082,215	\$ 2,090,528	\$ 2,248,515



This page intentionally left blank.

South Texas College
Auxiliary Fund
Detail of Expenditures by Classification and Organization
Budget Fiscal Year Ending August 31, 2012

Organization Code	Organization Name	Salaries	Benefits	Operating	Travel	Capital	Scholarship	Total
A21511	A Night with the Stars	\$ -	\$ -	\$ 5,000	\$ -	\$ -	\$ -	\$ 5,000
A21022	Admin-Assist VP Academic Affairs	-	-	1,021	-	-	-	1,021
A10011	Admin-Board of Trustees	-	-	6,300	-	-	-	6,300
A32005	Admin-Center for Learn Excellence	-	-	2,000	-	-	-	2,000
A21303	Admin-Curriculum & Accreditation	-	-	500	-	-	-	500
A21110	Admin-Distance Education	-	-	4,000	-	-	-	4,000
A10010	Admin-Executive	-	-	7,200	-	-	-	7,200
A30006	Admin-Graduation	-	-	10,000	-	-	-	10,000
A21507	Admin-Valley Scholars	-	-	5,300	-	-	-	5,300
A21003	Admin-VP Academic Affairs	-	-	6,310	-	-	-	6,310
A40008	Admin-VP Finance & Admin Svcs	-	-	7,000	-	-	-	7,000
A50005	Admin-VP Info Svcs & Planning	-	-	6,000	-	-	-	6,000
A30004	Admin-VP Stud Svcs & Develop	-	-	7,000	-	-	-	7,000
A60006	Admin-Workforce Development	-	-	3,000	-	-	-	3,000
A12018	Alumni and Friends	-	-	5,000	-	-	-	5,000
A50011	Art Gallery - Library Projects	-	-	566	-	-	-	566
A33005	Career Day	-	-	850	-	-	-	850
A21036	Child Dev. Conference Fall & Spring	-	-	5,141	-	-	-	5,141
A22351	Communication Arts Department - AUX	-	-	13,088	-	-	-	13,088
A22350	Communication Arts Festival - AUX	-	-	304	-	-	-	304
A14105	Community Engagement	-	-	3,000	-	-	-	3,000
A22422	Critical Thinking Conf - ADN/CHOC	-	-	2,938	-	-	-	2,938
A10012	Empl Spouse/Depend Waiver	-	-	159,944	-	-	-	159,944
A40020	Employee Recognition	-	-	2,500	-	-	-	2,500
A40009	Food Service	309,581	78,190	421,229	3,000	-	-	812,000
A40025	General Conferences	-	-	100,000	-	-	-	100,000
A35007	Intramural Sports	-	-	14,000	5,000	-	-	19,000
A50007	IS&P Focus Groups	-	-	2,500	-	-	-	2,500
A50009	Library Art Gallery Events	-	-	2,000	-	-	-	2,000
A50006	Library Events	-	-	2,000	-	-	-	2,000
A22346	Mexican American Studies - AUX	-	-	6,554	-	-	-	6,554
A22334	MV-Child Care & Development	88,847	26,258	213,814	12,810	12,071	-	353,800
A22347	Old Valley/New Valley Conferenc-AUX	-	-	2,774	-	-	-	2,774
A40010	Other Reserve	-	-	273,309	-	-	-	273,309
A21013	Phi Theta Kappa	-	-	2,000	4,500	-	-	6,500
A12004	PR-Employee Appreciation	-	-	23,800	-	-	-	23,800
A21035	Professional Dev Conferences	-	-	80,000	-	-	-	80,000
A12012	PR-Promotional Marketing	-	-	31,000	-	-	-	31,000
A22136	Science Olympiad/Planetarium-Aux	-	-	374	-	-	-	374
A21406	Staff Develop-College Wide	-	-	40,000	-	-	-	40,000
A22348	STC Black History Month - AUX	-	-	157	-	-	-	157
A21020	Stu Initiative-BA Prgm & Univ Rel	-	-	2,500	-	-	-	2,500
A22106	Stu Initiative-Business & Tech	-	-	2,700	-	-	-	2,700
A21021	Stu Initiative-HS Programs & Svcs	-	-	1,800	-	-	-	1,800
A22316	Stu Initiative-LASS	-	-	6,395	-	-	-	6,395
A22108	Stu Initiative-Math & Science	-	-	3,875	-	-	-	3,875

South Texas College
Auxiliary Fund
Detail of Expenditures by Classification and Organization
Budget Fiscal Year Ending August 31, 2012

Organization Code	Organization Name	Salaries	Benefits	Operating	Travel	Capital	Scholarship	Total
A21713	Stu Initiative-Mid Valley	-	-	3,720	-	-	-	3,720
A22416	Stu Initiative-NAH	-	-	3,000	-	-	-	3,000
A21733	Stu Initiative-Starr County	-	-	3,990	-	-	-	3,990
A21742	Stu Initiative-Technology Campus	-	-	3,348	-	-	-	3,348
A21012	Stu Initiative-VP Academic Affairs	-	-	1,500	-	-	-	1,500
A21032	Stu Learning Outcome & QEP	-	-	2,000	-	-	-	2,000
A35012	Student Activities	-	-	42,000	-	-	-	42,000
A42008	Student Copier	-	-	35,200	-	-	-	35,200
A35009	Student Life-Guest Speaker	-	-	11,000	-	-	-	11,000
A21510	Transfer to Restricted - V. Schlr Aux Rsrv	-	-	-	-	-	20,000	20,000
A22314	Wellness Center	51,931	12,445	20,024	-	-	-	84,400
A22349	Women's History Month - AUX	-	-	275	-	-	-	275
A22513	Women's Studies Sex Traffic Conf	-	-	1,082	-	-	-	1,082
Total Expenditures		\$ 450,359	\$ 116,893	\$ 1,623,882	\$ 25,310	\$ 12,071	\$ 20,000	\$ 2,248,515

South Texas College

Restricted Fund

Detail of Revenues by Source

Comparison of Previous Fiscal Years with Fiscal Year Ending August 31, 2012

Fund	FY '10 Budget	FY '11 Budget	FY '12 Budget
Revenue			
3rd Party - CPE	\$ 136,609	\$ 175,000	\$ 104,021
3rd Party CPWE	25,216	-	-
ACG - Academic Competitiveness Grant	350,000	530,042	-
Americorp National Service	53,187	57,221	50,659
Appetite for Education	8,500	-	-
Art Works	2,970	-	-
AT&T Foundation - BAT	-	4,300	4,500
Barnes & Noble Scholarship	599	10,000	10,000
Baylor College of Medicine's TCGEC	-	-	23,151
BBVA Compass Foundation	-	-	15,000
Border Security Training Center	-	-	290,508
Breaking Through Initiative Phase 3	-	-	105,000
Carl Perkins Basic	1,314,124	1,330,368	1,399,392
CCAMPIS	250,539	270,597	250,539
CCDC/Learner Web Next Generation Learning Challenges	-	-	95,000
Charles A Dana Center	-	-	25,000
CHOC Scholarship	16,629	3,498	2,915
City of McAllen	541,667	572,433	486,414
College for All Texans	-	-	11,130
Combat Exemp for Children of Miltry	-	3,998	3,181
Computer Science Scholarship	9,000	1,722	1,722
CPE - GED Scholarship	-	2,150	636
Criminal Justice & Social Sciences	1,368	5,200	1,590
Dept of Assist & Rehab Academic	96,470	101,936	66,771
Dept of Assist & Rehab CPWE	46,982	33,619	40,727
Dept of Assist & Rehab CPWE-Trng	-	59,543	11,054
Dev & Endowment - Futuro Brillante	4,902	-	-
Dev & Endowment - Marty Harvey	10	600	-
Dev & Endowment - Roberto Gutierrez	2	941	-
Developmental Education Initiative	275,656	275,656	215,084
Diesel Technology	-	-	266
Diesel Technology Scholarship	10,000	2,838	2,640
DOL Computer & Information Tech	215,000	249,738	-
Education Department Scholarship	7,225	7,225	5,843
Education to Go - CPE	-	5,000	-
Electronic Scholarship	5,800	6,235	-
Elide Lee Scholarship Fund	3,236	2,236	2,236
Endowment - Glen and Rita Kay Roney	186	-	-
English Essay Contest	350	350	350
Federal College Work Study	750,000	537,765	593,071

South Texas College
Restricted Fund
Detail of Revenues by Source

Comparison of Previous Fiscal Years with Fiscal Year Ending August 31, 2012

Fund	FY '10 Budget	FY '11 Budget	FY '12 Budget
Federal Leverage Edu Assistant Partner	31,679	33,087	-
Federal Pell	40,000,000	54,504,056	55,000,000
Federal SEOG	556,998	523,014	556,626
Gateway to College National Network Funding	-	-	450,067
Gear Up - Region One DE Academy 09	21,817	-	-
Gear Up - STARS	10,535	4,354	-
Gear Up - UTPA Foundation	6,380	2,803	-
General Scholar Fund - Donation	1,111	1,900	1,961
General Scholarship De Los Santos Endowment	372	1,075	775
Grainger Tools for Tomorrow Scholarship	-	-	4,000
Gral Scholarship 3rd Party Agency	-	47,054	52,815
Greater Tx Foundation Comm College	-	25,000	13,250
Hidalgo Co Employee Scholarship	6,000	4,430	1,060
Hidalgo County Headstart	67,537	49,997	69,184
Hidalgo ISD 21st Century	40,110	-	-
Hidalgo ISD TexPrep	-	27,000	36,600
Hidalgo Substance Abuse Treatment Fac	-	-	668
HSBC Financial Literacy	900	-	-
Interstice	70	70	-
IS&P Adm Professionals' Scholarship	-	250	265
JBL Associates Inc	24,000	-	4,000
Jeremy McLeash Scholarship	10,065	7,665	530
JET Grant Program	-	84,176	56,534
JET Technology Student Support Services	-	500,000	335,000
John Wright Burger King	600	705	1
Karen Wilson - Nursing Scholarship	10,260	8,760	1,590
Kathleen A. Pavlisko Scholarship	-	-	1,000
Kennedy Memorial Foundation	15,000	20,000	20,000
Kohl's National Volunteers Go Green	-	-	1,500
La Joya ISD - GED (HEP)	-	-	1,443
Lacks Employee & Dependent Scholars	10,000	10,750	13,607
League of Innovations - Global Skills	-	40,000	9,300
Lone Star College System, Completion by Design	-	-	34,529
LRGVWDB Cameron County	8,318	9,900	12,950
LRGVWDB WIA (Adult)	164,609	83,349	283,728
LRGVWDB WIA (Dislocated Worker)	12,495	22,103	54,232
LRGVWDB WIA (Youth)	1,742	2,621	13,620
LRGVWDB WIA TAA DW	51,216	135,562	135,215
LRGVWDB WIA TAA DW CPWE	7,025	111,313	43,633
Luis Alberto Gomez Scholarship	1,000	1,050	50
McAllen ISD 21st Century	55,981	63,956	6,000
McAllen ISD - College and Career Trans Initiative	199,330	199,330	134,376

South Texas College

Restricted Fund

Detail of Revenues by Source

Comparison of Previous Fiscal Years with Fiscal Year Ending August 31, 2012

Fund	FY '10 Budget	FY '11 Budget	FY '12 Budget
MET Medical Office Specialist (Tech and MV)	78,320	-	-
MET Truck Driving	292,740	218,397	217,923
MET Welding (Tech and MV)	144,596	24,768	8,204
MET Green Construction	-	66,387	66,076
Metlife Foundation	-	-	19,250
Michigan Migrant Headstart Program	788	-	-
Military Spouse Carrer Adv Accts	-	13,915	15,979
Minority Science & Engineering Prgm	12,700	-	-
NAAMREI Administration	-	224,000	346,280
Nadia & Lauren Lopez	2,000	3,000	5,000
NAH Student Emergency Fund	500	1,200	253
NASA	100	100	100
Nursing Shortage Reduction Program	-	395,230	-
Other Restricted Gifts	25,000	25,000	-
Pepsi - General Scholarship	-	-	15,000
Portland State U BTOP	-	-	151,050
Progreso ISD TexPrep	-	18,000	27,000
Ramanujam Scholarship	155	147	1,060
RGV Rehab Center LLC	5,000	2,500	2,500
Rio South Texas Workforce Innovation in Regional Economic Dev	1,794,894	142,643	-
Roma TexPrep	-	-	9,000
Samuel I Hernandez	500	500	500
San Diego Workforce Partnership	1,029	1,277	-
Self Sufficiency Fund	204,878	-	-
SMART - Science & Math Access	70,000	87,390	-
South Texas Academic Rising	42,394	43,403	50,000
South Texas Development Council FY10	-	352,371	172,000
South Texas Development Council FY11	-	-	36,000
Special Leveraging Edu Assistance	38,312	45,124	-
State Certified Educational Aide	295,000	261,471	152,799
STC 1st Anniversary Recipient #1	-	828	828
STC 1st Anniversary Recipient #2	-	1,244	1,244
STC 1st Anniversary Recipient #3	-	2,466	2,466
STC Alumni and Friends - Fundraising	-	-	1,068
STC Alumni and Friends - Scholarship	-	-	3,180
STC Faculty Sch Fund	765	765	765
T - Stem Early College High School	190,300	-	-
Teachers College Columbia University	47,550	-	-
Team McAllen Cycling Club Scholar	-	-	1,500
TEOG Initial	393,447	428,388	185,066
TEOG Renewal	311,500	268,780	515,970
Texas Grant Initial Yr - Current Year	1,732,040	1,552,160	-

South Texas College
Restricted Fund
Detail of Revenues by Source

Comparison of Previous Fiscal Years with Fiscal Year Ending August 31, 2012

Fund	FY '10 Budget	FY '11 Budget	FY '12 Budget
The Institute for Advanced Manufacturing - 3rd Party	399	8,346	29,076
THECB 2+2+2 College Connection	47,525	-	-
THECB P16 Advisor College Readiness	7,000	-	-
THECB College Connection	-	88,000	-
THECB Early High School Grad	173,980	241,676	-
THECB Intensive College Readiness	-	124,915	111,450
THECB Top 10% Scholarship Program	-	88,150	193,280
THECB Top 10% Scholarship Renewal	-	-	100,000
THECB Workstudy Mentorship	-	70,500	-
TMC Early Head Start Program	10,238	10,324	12,847
TPEG CPWE	108,537	77,133	112,027
TPEG NAH	1,504	45	-
TPEG NAAMREI	28,901	25,493	54,800
TPEG Non Resident	4,874	12,076	7,422
TPEG Resident	1,350,384	1,209,980	2,033,286
Transfer - Unrestricted/NAAMREI	503,083	-	825,179
True Rehab Service PTA/OTA	5,000	4,031	-
TWC Skills Development Fund	948,720	1,202,287	1,966,273
TWC Skills Development Electrical Consortium	-	273,000	392,000
TX Aid Families - Dep Children	1,920	2,722	1,429
TX A&M High School Equiv (HEP)	-	-	994
TX Be-On-Time Loan	-	298,913	78,100
TX College Work Study Prgm	125,007	95,223	110,191
TX Dept. of Ag.: Child and Adult Food Care Program	-	-	75,610
TX Dept. of Ag.: Parallel Pathways to Success	-	50,000	-
TX Grant I Renewal Yr	1,069,576	1,249,560	2,594,350
TX Guarantee Dual Enrollment Academy	3,400	-	-
TX HS Proj/Comm Foundation of TX - ECHS	-	239,725	-
TX Migrant Council	18,925	4,142	8,531
TX Migrant Council CPE	1,869	-	-
TX Nat'l Guard Tuition Assit Prgm	1,460	-	-
TX Professional Nursing School	8,710	10,716	-
TX Tomorrow Fund	-	100,328	120,374
United Migrant Opportunity Services	384	-	-
Upward Bound	292,189	292,189	292,189
US Dept of Ed CCRA	887,031	700,000	82,000
US HUD	-	-	469,970
UT Pan Am CCRA	237,180	-	21,300
UT Pan Am (NSF)	-	20,000	16,441
UTPA DoD MSI: Integrating So. Tx. Efforts in STEM Ed	-	-	51,447
UTPA High School Equiv (HEP)	-	-	5,924
UTSA TexPrep	-	-	11,600

South Texas College
Restricted Fund
Detail of Revenues by Source

Comparison of Previous Fiscal Years with Fiscal Year Ending August 31, 2012

Fund	FY '10 Budget	FY '11 Budget	FY '12 Budget
VA Chapter 33	-	365,128	529,569
Valley Scholars - Fundraising	35,000	47,623	45,000
Valley Scholars - Long Foundation	4,168	-	-
Valley Scholars - Scholarships	95,505	100,470	60,000
Veterans Chapter 31	266,072	283,833	264,376
Veterans Chapter 31 CPWE	8,878	8,011	18,990
Veterans Memorial Scholarship	-	5,500	1,060
Veterans Tuition Assistance	68,262	55,138	63,733
VIDA College Skills Prep Academy	78,648	-	-
VIDA - CPWE	54,584	43,183	38,160
VIDA - Edinburg	18,440	81,951	64,385
VIDA - Harlingen	-	11,234	12,490
VIDA - Hidalgo	300	184,043	101,790
VIDA - Mercedes	17,800	25,795	15,365
VIDA - Mission	18,350	63,907	52,487
VIDA - Raul Tijerina Foundation	-	-	793
VIDA - San Juan	9,570	-	-
VIDA - Self Suff McAllen Fund	236,420	343,738	311,437
VIDA - Weslaco	10,710	11,784	1,611
VIDA - Weslaco EDC	7,740	6,877	6,594
VIDA Brownsville GBIC3	-	1,183	-
VIDA JET	-	35,388	263,908
VIDA Pharr	-	10,428	6,718
VIDA Willacy County	-	-	712
Vocational Nursing Scholarship	1,110	1,120	-
WIA Hidalgo Co Books/Supplies	-	1,920	3,690
WIA Hidalgo Co Tuition & Fees	-	59,368	92,502
WIRED NAAMREI Adm Ind Cost	63,032	-	-
WIRED Skills Development Tuition	134,311	455,988	-
Workforce Solutions - Child Development Associate	-	40,000	-
Workforce Solutions - ESL	-	272,000	-
Workforce Solutions - GED	246,150	393,500	-
Workforce Solutions - NAH Stu Retention and Success Initiative	-	26,500	-
Workforce Solutions - Read Right	147,000	168,500	-
Workforce Solutions - Employability Skills	971,988	-	-
Workforce Solutions - Vocational Training	247,488	375,000	-
Total Revenues	\$ 59,705,207	\$ 74,935,579	\$ 74,910,030



This page intentionally left blank.

South Texas College
Restricted Fund
Detail of Expenditures by Classification and Fund
Budget for Fiscal Year 2011 - 2012

Fund	Salaries	Benefits	Operating	Travel	Capital	Scholarships	Total
Expenditures							
3rd Party - CPE	\$ -	\$ -	\$ -	\$ -	\$ -	\$ 104,021	\$ 104,021
Americorp National Service	-	-	-	-	-	50,659	50,659
AT&T Foundation - BAT	-	-	-	-	-	4,500	4,500
Barnes & Noble General Scholarship	-	-	-	-	-	10,000	10,000
Baylor College of Medicine's TCGEC	15,291	1,560	2,600	3,700	-	-	23,151
BBVA Compass Foundation	-	-	-	-	-	15,000	15,000
Border Security Training Center	-	-	232,406	-	58,102	-	290,508
Breaking Through Initiative Phase 3	31,853	5,430	47,393	10,000	-	10,324	105,000
Carl Perkins Basic	838,940	83,000	380,124	25,528	71,800	-	1,399,392
CCDC/Learner Web Next Generation Learning Challenges	60,000	18,000	7,000	10,000	-	-	95,000
Charles A Dana Center	10,000	2,950	6,190	5,860	-	-	25,000
CHOC Scholarship	-	-	-	-	-	2,915	2,915
City of McAllen Phase 14	3,527	927	5,000	2,500	-	13,360	25,314
City of McAllen Phase 15	60,000	15,600	64,000	9,500	-	312,000	461,100
College for All Texans	-	-	-	-	-	11,130	11,130
Combat Exemp for Children of Miltry	-	-	-	-	-	3,181	3,181
Computer Science Scholarship	-	-	-	-	-	1,722	1,722
CPE - GED Scholarship	-	-	-	-	-	636	636
Criminal Justice & Social Sciences	-	-	-	-	-	1,590	1,590
Dept of Assist & Rehab Academic	-	-	-	-	-	66,771	66,771
Dept of Assist & Rehab CPWE	-	-	-	-	-	40,727	40,727
Dept of Assist & Rehab CPWE-Trng	-	-	-	-	-	11,054	11,054
Developmental Education Initiative	148,817	48,767	2,000	15,500	-	-	215,084
Diesel Technology	-	-	266	-	-	-	266
Diesel Technology Scholarship	-	-	-	-	-	2,640	2,640
Education Department Scholarship	-	-	-	-	-	5,843	5,843
Elide Lee Scholarship Fund	-	-	-	-	-	2,236	2,236
English Essay	-	-	-	-	-	350	350
Federal College Work Study 2012	-	-	-	-	-	593,071	593,071
Federal Pell - Current Year	-	-	-	-	-	55,000,000	55,000,000
Federal SEOG - Current Year	-	-	-	-	-	556,626	556,626
Gateway to College National Network Funding	196,254	51,926	145,700	16,000	-	40,187	450,067
General Scholar Fund-Donation	-	-	-	-	-	1,961	1,961
General Scholar - De Los Santos Endow	-	-	-	-	-	775	775
Grainger Tools for Tomorrow Scholarships	-	-	-	-	-	4,000	4,000
Gral Scholarship 3rd Party Agency	-	-	-	-	-	52,815	52,815
Greater Tx Foundation Comm College	-	-	-	-	-	13,250	13,250
Hidalgo Co. Scholarship	-	-	-	-	-	1,060	1,060
Hidalgo County Headstart	-	-	-	-	-	69,184	69,184
Hidalgo ISD TexPrep	10,000	1,600	25,000	-	-	-	36,600
Hidalgo Substance Abuse Treatment Fac	-	-	-	-	-	668	668
IS&P Adm Professionals' Scholarship	-	-	-	-	-	265	265
JBL Associates Inc.	-	-	4,000	-	-	-	4,000
Jeremy McLeash Scholarship Fund	-	-	-	-	-	530	530
JET Grant Program	-	-	-	-	-	56,534	56,534
JET Technology Student Support Services	60,000	10,000	90,000	-	-	175,000	335,000
John Wright Burger King	-	-	-	-	-	1	1
Karen Wilson - Nursing Scholarship	-	-	-	-	-	1,590	1,590

South Texas College
Restricted Fund
Detail of Expenditures by Classification and Fund
Budget for Fiscal Year 2011 - 2012

Fund	Salaries	Benefits	Operating	Travel	Capital	Scholarships	Total
Kathleen A. Pavlisko Scholarship	-	-	-	-	-	1,000	1,000
Kennedy Memorial Foundation	-	-	-	-	-	20,000	20,000
Kohl's National Volunteers Go Green	-	-	1,500	-	-	-	1,500
La Joya ISD - GED (HEP)	-	-	-	-	-	1,443	1,443
Lacks Employee & Dependent Scholars	-	-	-	-	-	13,607	13,607
League of Innovations-Global Skills	3,000	800	2,500	3,000	-	-	9,300
Lone Star College System, Completion by Design	-	-	22,625	11,904	-	-	34,529
LRGVWDB Cameron County	-	-	-	-	-	12,950	12,950
LRGVWDB WIA (Adult)	-	-	-	-	-	283,728	283,728
LRGVWDB WIA (Dislocated Wker)	-	-	-	-	-	54,232	54,232
LRGVWDB WIA (Youth)	-	-	-	-	-	13,620	13,620
LRGVWDB-WIA - TAA DW	-	-	-	-	-	135,215	135,215
LRGVWDB-WIA - TAA DW CPWE	-	-	-	-	-	43,633	43,633
Luis Alberto Gomez Scholarship	-	-	-	-	-	50	50
McAllen ISD 21st Century	-	-	6,000	-	-	-	6,000
McAllen ISD - College and Career Trans Initiative	94,500	26,460	13,416	-	-	-	134,376
MET - Welding	-	-	-	-	-	8,204	8,204
MET Green Construction	-	-	-	-	-	66,076	66,076
MET Truck Driving	-	-	-	-	-	217,923	217,923
Metlife Foundation	-	-	19,250	-	-	-	19,250
Military Spouse Carrer Adv Accts	-	-	-	-	-	15,979	15,979
NAAMREI Administration	192,795	50,127	63,358	40,000	-	-	346,280
Nadia & Lauren Lopez Memorial Schol	-	-	-	-	-	5,000	5,000
NAH Student Emergency Fund	-	-	-	-	-	253	253
NASA	-	-	-	-	-	100	100
Pepsi - General Scholarship	-	-	-	-	-	15,000	15,000
Portland State U BTOP	50,000	14,000	84,050	3,000	-	-	151,050
Progreso ISD TexPrep	9,000	1,800	16,200	-	-	-	27,000
Ramanujam Scholarship	-	-	-	-	-	1,060	1,060
RGV Rehab Center LLC - PTA/OTA Schola	-	-	-	-	-	2,500	2,500
Roma TxPrep	3,000	450	5,550	-	-	-	9,000
Samuel I Hernandez	-	-	-	-	-	500	500
South Texas Academic Rising	-	-	-	-	-	50,000	50,000
South Texas Development Council FY10	-	-	-	-	-	172,000	172,000
South Texas Development Council FY11	-	-	-	-	-	36,000	36,000
State Certified Educational Aide	-	-	-	-	-	152,799	152,799
STC 1st Anniversary Recipient #1	-	-	-	-	-	828	828
STC 1st Anniversary Recipient #2	-	-	-	-	-	1,244	1,244
STC 1st Anniversary Recipient #3	-	-	-	-	-	2,466	2,466
STC Alumni and Friends - Fundraising	-	-	1,068	-	-	-	1,068
STC Alumni and Friends - Scholarship	-	-	-	-	-	3,180	3,180
STC Faculty Sch Fund	-	-	-	-	-	765	765
Team McAllen Cycling Club Scholar	-	-	-	-	-	1,500	1,500
TEOG Initial	-	-	-	-	-	185,066	185,066
TEOG Renewal	-	-	-	-	-	515,970	515,970
The Institute for Adv Manufacturing - 3rd Party	-	-	-	-	-	29,076	29,076
THECB Intensive College Readiness	19,000	2,000	47,250	-	-	43,200	111,450
THECB Top 10% Scholarship Program	-	-	-	-	-	193,280	193,280
THECB Top 10% Scholarship Renewal	-	-	-	-	-	100,000	100,000

South Texas College
Restricted Fund
Detail of Expenditures by Classification and Fund
Budget for Fiscal Year 2011 - 2012

Fund	Salaries	Benefits	Operating	Travel	Capital	Scholarships	Total
TMC - Early Head Start Program	-	-	-	-	-	12,847	12,847
TPEG CPWE	-	-	-	-	-	112,027	112,027
TPEG NAAMREI	-	-	-	-	-	54,800	54,800
TPEG Non Resident Curr Yr	-	-	-	-	-	7,422	7,422
TPEG Resident Curr Yr	-	-	-	-	-	2,033,286	2,033,286
Transfer - Unrestricted/NAAMREI	633,766	164,913	16,500	10,000	-	-	825,179
TWC Skills Dev Fund 16	37,583	9,772	39,359	-	-	212,000	298,714
TWC Skills Dev Fund 17	55,000	14,300	80,759	-	-	228,000	378,059
TWC Skills Dev Fund 18	20,000	5,200	28,800	-	-	88,000	142,000
TWC Skills Dev Fund 19	65,000	16,900	70,000	-	-	460,000	611,900
TWC Skills Dev Fund 20	60,000	15,600	40,000	-	-	420,000	535,600
TWC Skills Development Electrical Consortium	38,500	9,410	68,090	-	10,000	266,000	392,000
TX Aid Families - Dep Children	-	-	-	-	-	1,429	1,429
TX A&M High School Equiv (HEP)	-	-	-	-	-	994	994
TX Be-On-Time Loan	-	-	-	-	-	78,100	78,100
TX CWS 2012	-	-	-	-	-	110,191	110,191
TX Dept. of Ag.: Child and Adult Food Care Program	-	-	75,610	-	-	-	75,610
TX Grant Renewal Yr - Curr Yr	-	-	-	-	-	2,594,350	2,594,350
TX Migrant Council	-	-	-	-	-	8,531	8,531
TX Tomorrow Fund	-	-	-	-	-	120,374	120,374
US Dept of Ed: (CCAMPIS)	89,696	26,461	134,382	-	-	-	250,539
US Dept of Ed: Upward Bound	154,213	37,097	74,249	26,630	-	-	292,189
US Dept. of ED CCRA	56,000	11,000	15,000	-	-	-	82,000
US HUD	196,170	47,000	203,800	3,000	20,000	-	469,970
UT PanAM CCRA	15,000	2,300	4,000	-	-	-	21,300
UT PanAM (NSF)	8,567	1,874	3,000	3,000	-	-	16,441
UTPA DoD MSI: Integrating So Tx Efforts in STEM Ed	23,728	6,169	21,550	-	-	-	51,447
UTPA High School Equiv (HEP)	-	-	-	-	-	5,924	5,924
UTSA TexPrep	10,000	1,600	-	-	-	-	11,600
VA Chapter 33	-	-	-	-	-	529,569	529,569
Valley Scholars - Fundraising	-	-	-	-	-	45,000	45,000
Valley Scholars - Scholarships	-	-	-	-	-	60,000	60,000
Veterans Chapter 31	-	-	-	-	-	264,376	264,376
Veterans Chapter 31 CPWE	-	-	-	-	-	18,990	18,990
Veterans Memorial Scholarship	-	-	-	-	-	1,060	1,060
Veterans Tuition Assistance	-	-	-	-	-	63,733	63,733
VIDA - CPWE	-	-	-	-	-	38,160	38,160
VIDA - Edinburg	-	-	-	-	-	64,385	64,385
VIDA - Harlingen	-	-	-	-	-	12,490	12,490
VIDA - Hidalgo	-	-	-	-	-	101,790	101,790
VIDA - Mercedes	-	-	-	-	-	15,365	15,365
VIDA - Mission	-	-	-	-	-	52,487	52,487
VIDA - Raul Tijerina Foundation	-	-	-	-	-	793	793
VIDA - Self Suff McAllen Fund	-	-	-	-	-	311,437	311,437
VIDA - Weslaco	-	-	-	-	-	1,611	1,611
VIDA - Weslaco EDC	-	-	-	-	-	6,594	6,594
VIDA JET	-	-	-	-	-	263,908	263,908
VIDA Pharr	-	-	-	-	-	6,718	6,718
VIDA Willacy County	-	-	-	-	-	712	712

South Texas College
Restricted Fund
Detail of Expenditures by Classification and Fund
Budget for Fiscal Year 2011 - 2012

Fund	Salaries	Benefits	Operating	Travel	Capital	Scholarships	Total
WIA Hidalgo Co Books/Supplies	-	-	-	-	-	3,690	3,690
WIA Hidalgo Co Tuition & Fees	-	-	-	-	-	92,502	92,502
Total Expenditures	\$ 3,269,200	\$ 704,993	\$ 2,169,545	\$ 199,122	\$ 159,902	\$ 68,407,267	\$ 74,910,030

South Texas College
Plant Fund
Unexpended - Construction Fund
Summary of Revenues, Expenditures and Transfers - Budget and Actual
Comparison of Previous Fiscal Years with Fiscal Year Ending August 31, 2012

Revenues and Transfers Summary - Budget and Actual**

Revenues/Transfers**	FY '10 Budget (As Amended)	FY '10 Actual	FY '11 Budget	FY '11 Estimated*	FY '12 Budget
Interest	\$ 438,861	\$ 89,883	\$ 100,549	\$ 57,866	\$ 28,715
Starr County Match	10,000	10,000	10,000	10,000	10,000
Transfer In - Unrestricted Fund	2,500,000	2,500,000	2,500,000	2,500,000	2,500,000
Transfer In - Unrestricted Fund - Construction	6,000,000	6,000,000	-	-	-
ORCA - Starr County Campus - Rural Technology Ctr	2,487,605	3,500,000	-	-	-
Fund Balance Deduction	27,648,136	7,959,375	15,031,639	3,245,853	7,985,320
Total Revenues/Transfers**	\$ 39,084,602	\$ 20,059,258	\$ 17,642,188	\$ 5,813,719	\$ 10,524,035

Expenditures Summary - Budget and Actual**

Expenditures**	FY '10 Budget	FY '10 Actual	FY '11 Budget	FY '11 Estimated*	FY '12 Budget
Projected Draws for Approved Projects	\$ 39,084,602	\$ 20,059,258	\$ 17,642,188	\$ 5,813,719	\$ 10,524,035
Fund Balance Addition	-	-	-	-	-
Total Expenditures**	\$ 39,084,602	\$ 20,059,258	\$ 17,642,188	\$ 5,813,719	\$ 10,524,035
Ending Fund Cash and Investment Balance		\$ 22,746,377		\$ 19,500,524	\$ 11,515,204

*Amounts are estimated. Actual amounts will be available after fiscal year end and completion of audit.

** Includes Fund Balance Addition/Deduction.

The plant fund group consists of four separate funds, including funds set aside for the acquisition of physical properties for institutional purposes but unexpended at the date of reporting.

**South Texas College
Plant Fund
Unexpended - Construction Fund**

**Detail of Projected Draws for Approved Construction Projects
Project Budget with Projected Expenditures for Fiscal Year Ending August 31, 2012**

Construction Project	Fund	Project Budget	Previous Expenditures*	Projected Expenditures 2012	
Pecan Campus - Continued Project for 2010 - 2011					
Pecan South Boulevard Entrance and West Loop Road	Construction	912092	\$ 658,405	\$ 593,026	\$ 65,379
Pecan South Boulevard Entrance and West Loop Road	Design	912094	52,302	50,035	2,267
Pecan South Boulevard Entrance and West Loop Road	Miscellaneous	912096	27,955	27,455	500
Pecan West Academic Building	Construction	912450	6,093,474	3,087,275	3,006,199
Pecan West Academic Building	Design	912451	325,425	209,017	116,408
Pecan West Academic Building	Miscellaneous	912452	44,008	32,838	11,170
Pecan West Academic Building	FFE	912453	440,000	-	440,000
Pecan West Academic Building	Technology	912454	696,160	-	696,160
Pecan Campus - Proposed New Projects					
Pecan Loop Road Phase II	Construction	912478	272,650	-	272,650
Pecan Loop Road Phase II	Design	912479	21,608	18,108	3,500
Pecan Loop Road Phase II	Miscellaneous	912480	18,450	1,950	16,500
Pecan Monument Signs	Construction	912098	61,800	-	61,800
Pecan Monument Signs	Miscellaneous	912102	10,000	-	10,000
Pecan Digital Marquee	Construction	912481	60,000	-	60,000
Pecan Digital Marquee	Miscellaneous	912482	10,000	-	10,000
Pecan Digital Marquee	Technology	912483	2,000	-	2,000
Pecan Building G Fume Hoods	Construction	912485	90,000	-	90,000
Pecan Building G Fume Hoods	Design	912486	14,000	-	14,000
Pecan Building G Fume Hoods	Miscellaneous	912487	5,000	-	5,000
Pecan DMARC Relocation	Construction	912490	275,000	-	275,000
Pecan DMARC Relocation	Design	912491	20,000	-	20,000
Pecan DMARC Relocation	Miscellaneous	912492	5,000	-	5,000
Mid Valley Campus - Proposed New Projects					
MV Convert Four Classrooms to Two Science Labs	Infrastructure	912626	280,000	-	280,000
MV Convert Four Classrooms to Two Science Labs	Design	912627	30,000	-	30,000
MV Convert Four Classrooms to Two Science Labs	Miscellaneous	912628	7,000	-	7,000
MV Convert Four Classrooms to Two Science Labs	FFE	912629	8,500	-	8,500
MV Convert Four Classrooms to Two Science Labs	Technology	912630	15,000	-	15,000
MV Parking Expansion and Landscaping	Construction	912631	636,200	-	636,200
MV Parking Expansion and Landscaping	Design	912632	69,982	-	69,982
MV Parking Expansion and Landscaping	Miscellaneous	912633	54,000	-	54,000
Tech Center - Proposed New Projects					
Tech Center Welding Ventilation System	Construction	912551	86,520	-	86,520
Tech Center Welding Ventilation System	Design	912552	4,800	3,800	1,000
Nursing Allied Health Campus - Proposed New Projects					
NAH Respiratory Therapy Lab Expansion	Construction	911671	123,600	-	123,600
NAH Respiratory Therapy Lab Expansion	Design	911672	30,500	8,500	22,000
NAH Respiratory Therapy Lab Expansion	Miscellaneous	911673	7,200	-	7,200
NAH Respiratory Therapy Lab Expansion	FFE	911675	2,000	-	2,000
NAH Respiratory Therapy Lab Expansion	Technology	911674	22,000	-	22,000

South Texas College
Plant Fund
Unexpended - Construction Fund
Detail of Projected Draws for Approved Construction Projects
Project Budget with Projected Expenditures for Fiscal Year Ending August 31, 2012

Construction Project	Fund	Project Budget	Previous Expenditures*	Projected Expenditures 2012	
Starr County Campus - Proposed New Projects					
Starr ADN Skills Lab	Construction	912721	120,000	-	120,000
Starr ADN Skills Lab	Design	912722	12,000	-	12,000
Starr ADN Skills Lab	Miscellaneous	912723	7,000	-	7,000
Starr ADN Skills Lab	FFE	912724	8,500	-	8,500
Starr ADN Skills Lab	Technology	912725	15,000	-	15,000
District Wide - Continued Project from 2010 - 2011					
District Wide Campus Expansion Master Plan	Design	911718	49,281	19,281	30,000
District Wide - Proposed New Projects					
District Wide	Land	911705	3,193,223	193,223	3,000,000
District Wide Renovations	Construction	911704	316,563	16,563	300,000
District Wide Renovations	Design	911715	36,300	6,300	30,000
District Wide Renovations	Miscellaneous	911724	33,122	3,122	30,000
District Wide Directional Signage	Construction	912268	30,000	15,000	15,000
District Wide Additional Portable Buildings	Infrastructure	911921	156,561	41,561	115,000
District Wide Additional Portable Buildings	Design	911919	22,523	12,523	10,000
District Wide Additional Portable Buildings	Miscellaneous	911916	8,200	1,200	7,000
District Wide Additional Portable Buildings	FFE	911917	61,581	27,581	34,000
District Wide Additional Portable Buildings	Technology	911918	80,000	-	80,000
District Wide ADA Compliance	Construction	911908	120,000	-	120,000
District Wide ADA Compliance	Design	911910	12,000	-	12,000
District Wide ADA Compliance	Miscellaneous	911912	30,000	-	30,000
Total Continued Projects from 2010 - 2011			8,387,010	4,018,927	4,368,083
Total Proposed New Projects			6,505,383	349,431	6,155,952
Total Construction Program Draws			\$ 14,892,393	\$ 4,368,358	\$ 10,524,035

*Includes Projections for fiscal year 2010 - 2011



This page intentionally left blank.

South Texas College
Plant Fund
Renewals and Replacements Fund
Summary of Revenues, Expenditures and Transfers - Budget and Actual
Comparison of Previous Fiscal Years with Fiscal Year Ending August 31, 2012

Revenues and Transfers Summary - Budget and Actual**

Revenues/Transfers**	FY '10 Budget	FY '10 Actual	FY '11 Budget (As Amended)	FY '11 Estimated*	FY '12 Budget
Transfers In - Unrestricted	\$ -	\$ -	\$ 7,000,000	\$ 7,000,000	\$ -
Fund Balance Deduction	450,000	147,799	-	-	3,906,802
Total Revenues/Transfers**	\$ 450,000	\$ 147,799	\$ 7,000,000	\$ 7,000,000	\$ 3,906,802

Expenditures Summary - Budget and Actual**

Expenditures**	FY '10 Budget	FY '10 Actual	FY '11 Budget (As Amended)	FY '11 Estimated*	FY '12 Budget
Renewals and Replacements Expenditures	\$ 450,000	\$ 147,799	\$ 343,000	\$ 125,427	\$ 3,906,802
Fund Balance Addition	-	-	6,657,000	6,874,573	-
Total Expenditures**	\$ 450,000	\$ 147,799	\$ 7,000,000	\$ 7,000,000	\$ 3,906,802
Ending Fund Cash and Investment Balance		\$ 7,711,943		\$ 14,586,516	\$ 10,679,714

* Amounts are estimated. Actual amounts will be available after fiscal year end and completion of audit.

** Includes Fund Balance Addition/Deduction.

The plant fund group consists of four separate funds, including funds set aside for the renewals and replacements of institutional properties.

South Texas College

Plant Fund

Renewals & Replacements Fund

Detail of Projected Draws for Approved Renewals & Replacements Projects

Project Budget with Projected Expenditures for Fiscal Year Ending August 31, 2012

Construction Project		Fund	Project Budget	Previous Expenditures*	Projected Expenditures 2012
Pecan Campus - Proposed New Projects					
Pecan Plaza Re-Roofing	Construction	921130	\$ 648,900	-	\$ 648,900
Pecan Plaza Re-Roofing	Design	921131	58,401	-	58,401
Pecan Plaza Re-Roofing	Miscellaneous	921132	5,000	-	5,000
Pecan Library Lighting Enhancement	Construction	921135	42,500	-	42,500
Pecan Library Lighting Enhancement	Design	921136	7,500	-	7,500
Pecan Library Carpeting	Construction	921139	7,500	-	7,500
Mid Valley Campus - Proposed New Projects					
MV Child Development Center Covered Walkway	Construction	921210	51,500	-	51,500
MV Child Development Center Covered Walkway	Design	921211	7,500	1,000.00	6,500
MV Child Development Center Covered Walkway	Miscellaneous	921212	11,000	-	11,000
Technology Center - Proposed New Projects					
Tech Center Building B Re-roofing	Construction	921306	1,678,900	-	1,678,900
Tech Center Building B Re-roofing	Design	921307	151,101	-	151,101
Tech Center Building B Re-roofing	Miscellaneous	921308	10,000	-	10,000
Tech Center 3900 West Military Office Renovations	Construction	921310	450,000	-	450,000
Tech Center 3900 West Military Office Renovations	Miscellaneous	921311	20,000	-	20,000
Tech Center 3900 West Military Office Renovations	FFE	921312	70,000	-	70,000
Tech Center 3900 West Military Office Renovations	Technology	921313	80,000	-	80,000
Starr County Campus - Proposed New Projects					
Starr HVAC Chiller Replacement	Construction	921501	275,000	-	275,000
Starr HVAC Chiller Replacement	Design	921502	28,000	-	28,000
Starr HVAC Chiller Replacement	Miscellaneous	921503	5,000	-	5,000
District Wide - Proposed New Projects					
District Wide Renewal & Replacements	Replacements	921122	205,665	55,665	150,000
Energy Efficiency Improvements	Construction	921130	150,000	-	150,000
Total Proposed New Projects			3,963,467	56,665	3,906,802
Total Construction Program Draws			\$ 3,963,467	\$ 56,665	\$ 3,906,802

* Includes projections for fiscal year 2010 - 2011

South Texas College
Plant Fund
Retirement of Indebtedness
Summary of Revenues, Expenditures and Transfers - Budget and Actual
Comparison of Previous Fiscal Years with Fiscal Year Ending August 31, 2012

Revenues and Transfers Summary - Budget and Actual**

Revenues/Transfers	FY '10 Budget	FY '10 Actual	FY '11 Budget	FY '11 Estimated*	FY '12 Budget
Taxes/Penalty & Interest	\$ 10,814,750	\$ 12,172,871	\$ 10,819,320	\$ 11,674,552	\$ 11,695,421
Interest	13,162	16,241	6,381	21,718	9,963
Transfer In - Unrestricted Fund - Bond 2007 (MTR)	127,800	127,800	392,400	392,400	396,400
Transfer In - Unrestricted Fund - Bond 1999	265,460	265,460	-	-	-
Fund Balance Deduction	-	-	-	-	-
Total Revenues/Transfers	\$ 11,221,172	\$ 12,582,372	\$ 11,218,101	\$ 12,088,670	\$ 12,101,784

Expenditures Summary - Budget and Actual**

Expenditures**	FY '10 Budget	FY '10 Actual	FY '11 Budget	FY '11 Estimated*	FY '12 Budget
Debt Service Payment - Bond 2007 (LTR)	\$ 1,294,950	\$ 1,294,950	\$ 1,295,150	\$ 1,295,150	\$ 1,294,950
Debt Service Payment - Bond 2004	1,719,644	1,719,644	1,912,450	1,912,450	1,905,750
Debt Service Payment - Bond 2003	2,138,125	2,138,125	2,131,325	1,654,000	1,660,200
Debt Service Payment - Bond 2002	5,604,556	5,604,556	5,417,625	4,866,525	4,868,700
Debt Service Payment - Bond 2007 (MTR)	127,800	127,800	392,400	392,400	396,400
Debt Service Payment - Bond 2010 (LTR)	-	-	-	1,028,418	1,025,900
Debt Service Payment - PPFCA 1999	265,460	265,460	-	-	-
Administrative & Collection Fees	70,637	64,592	69,151	69,967	70,182
Fund Balance Addition	-	1,367,245	-	869,761	879,702
Total Expenditures**	\$ 11,221,172	\$ 12,582,372	\$ 11,218,101	\$ 12,088,670	\$ 12,101,784
Ending Fund Cash and Investment Balance		\$ 9,131,164		\$ 10,000,924	\$ 10,880,626

*Amounts are estimated. Actual amounts will be available after fiscal year end and completion of audit

** Includes Fund Balance Addition

The plant fund group consists of four separate funds, including funds set aside for debt service charges and for the retirement of indebtedness on institutional properties



This page intentionally left blank.

**A RESOLUTION ADOPTING THE BUDGET OF
SOUTH TEXAS COLLEGE FOR THE FISCAL YEAR
BEGINNING SEPTEMBER 1, 2011 AND ENDING
AUGUST 31, 2012 IN ACCORDANCE WITH THE
PROVISIONS OF THE TEXAS EDUCATION CODE
AND ORDERING OTHER PROVISIONS RELATED TO
THE SUBJECT MATTER HEREOF.**

**BE IT ORDERED BY THE BOARD OF TRUSTEES OF SOUTH TEXAS
COLLEGE, THAT:**

SECTION I: The Budget Estimate of revenues for South Texas College District (the "College District") and the expenses of conducting the affairs thereof for the ensuing fiscal year beginning September 1, 2011, and ending August 31, 2012, as submitted by the President of the College, be, and the same is in all things, adopted and approved as the budget of all of the current revenues and expenses for the fiscal year beginning the 1st day of September, 2011, and ending the 31st day of August, 2012.

SECTION II: The amount of ad valorem taxes and revenue from other sources, as estimated by the President, is hereby appropriated out of the various Funds for the payment of operating expenses and capital outlay of the College District. A copy of the Budget Summary indicating such revenues and appropriating their expenditures is attached hereto and made a part hereof for all purposes as Exhibit "A" and shall remain on file in the Office of the President.

SECTION III: The sums indicated in Exhibit "A" are hereby appropriated in the Unrestricted Fund and College's Debt Service Fund out of the current year ad valorem taxes as collected for the purposes of maintenance and operation of the College District, as applicable, and applying the interest due on the general obligation bonds, redeeming the bonds as they mature, and creating sinking funds as required by such bonds.

SECTION IV: All Resolutions or parts of Resolutions in conflict herewith are hereby repealed.

SECTION V: This Resolution shall be and remain in full force and effect as of September 1, 2011.

SECTION VI: If any part, or parts, of this Resolution are found to be invalid or unconstitutional by a court having competent jurisdiction, then such invalidity or unconstitutionality shall not affect the remaining parts hereof and such remaining parts shall remain in full force and effect, and to the extent this Resolution is considered severable.


CONSIDERED, PASSED and APPROVED this 22nd day of August, 2011 at a meeting of the Board of Trustees of South Texas College District at which a quorum was present and which was held in accordance with the Texas Government Code Chapter 551.

SIGNED this 22nd day of August, 2011.

SOUTH TEXAS COLLEGE DISTRICT

By: 
Gary Garwitz, Chairman

ATTEST:

By: 
Oscar Longoria, Jr., Secretary

