

Legislative Appropriations Request

For Fiscal Years 2016 and 2017

**Submitted to the
Governor's Office of Budget, Planning and Policy
and the Legislative Budget Board**

by

Kilgore College

August 4, 2014

Table of Contents

Certification Letter	1
Mission Statement	2
Administrator's Statement.....	3
Organization Chart	6
Summary of Base Request by Strategy	11
Summary of Base Request by Method of Finance	13
Summary of Total Request by Strategy	15
Strategy Request	17
Schedule 3C: Group Insurance Data Elements	26 ²⁵



CERTIFICATE

Agency Name Kilgore College

This is to certify that the information contained in the agency Legislative Appropriations Request filed with the Legislative Budget Board (LBB) and the Governor's Office of Budget, Planning and Policy (GOBPP) is accurate to the best of my knowledge and that the electronic submission to the LBB via the Automated Budget and Evaluation System of Texas (ABEST) and the PDF file submitted via the LBB Document Submission application are identical.

Additionally, should it become likely at any time that unexpended balances will accrue for any account, the LBB and the GOBPP will be notified in writing in accordance with Article IX, Section 7.01 (2014-15 GAA).

Chief Executive Officer or Presiding Judge

William M. Holda
Signature

William Holda
Printed Name

President
Title

July 31, 2014
Date

Board or Commission Chair

Charles Hale
Signature

Charles Hale
Printed Name

Board Chair
Title

July 31, 2014
Date

Chief Financial Officer

Duane J. McNaney
Signature

Duane J. McNaney
Printed Name

Vice President of Finance and CFO
Title

July 31, 2014
Date

SESSION AGENCY MISSION

84th Regular Session, Agency Submission, Version 1
Automated Budget and Evaluation System of Texas (ABEST)

DATE: 8/1/2014
TIME: 2:19:29PM
PAGE: 1 OF 1

Agency code: **967**

Agency name: **Kilgore College**

AGENCY MISSION

Kilgore College prepares students for success in life by providing educational opportunities that have high quality, great value, easy access and community focus.

- Taking as its motto “Emphasis Excellence,” Kilgore College promotes high quality in all of its operations: teaching and learning which lead to certificates and associate degrees, administrative and educational support services, and public service.
- Kilgore College promotes great value primarily for its 20-member school district service area in Northeast Texas by providing educational opportunities at a competitive cost.
- Kilgore College promotes easy access through open-door admission, distance learning opportunities, dual credit courses, developmental education, and a comprehensive financial aid program.
- Kilgore College promotes community focus through workforce education programs and through public service endeavors including workforce and small business development, Adult Education and Literacy, continuing education, service learning, athletics and the fine arts.

The mission statement of Kilgore College is consistent with the Texas Education Code §130.0011, which states that the mission of public junior colleges shall be two-year institutions primarily serving their local taxing districts and service areas in Texas and offering vocational, technical, and academic courses for certification or associate degrees, as well as continuing education, remedial and compensatory education consistent with open-admission policies.

Administrator's Statement

8/1/2014 2:19:30PM

84th Regular Session, Agency Submission, Version 1
Automated Budget and Evaluation System of Texas (ABEST)

967 Kilgore College

Kilgore College is a comprehensive junior college organized in 1935. The institution celebrates its 80th anniversary during the 2014-2015 academic year, commemorating a rich heritage legacy of excellence. Kilgore College aspires to provide quality educational offerings and services which will enable students to develop their intellectual potential, achieve career proficiency, and enrich their social, cultural, and civic experiences in a democratic society.

Kilgore College serves approximately 5,900 students enrolled in credit hour classes and an additional 3,500 students in adult education and continuing education courses in any given term. The main campus is located in Kilgore, Gregg County, Texas; an extension center is operated in Longview, Texas, and courses are offered in other cities in the College's service area. Kilgore College operates the regional East Texas Police Academy which provides in-service law enforcement training for entities in a 35 county region of Northeast Texas, a regional Fire Academy, an extensive ABE program, and extensive customized workforce training.

The institution's purpose statutorily mandated in the Texas Education Code and embraced at the local level, is to provide:

- Technical programs up to two years in length leading to associate degrees or certificates;
- Vocational programs leading directly to employment in semiskilled and skilled occupations;
- Freshman and sophomore courses in the arts and sciences which are university parallel;
- Continuing adult education programs for occupational or cultural upgrading; compensatory education programs designed to fulfill the commitment of an admissions policy allowing the enrollment of disadvantaged students;
- A program of counseling and guidance designed to assist students in achieving their individual educational goals;
- Workforce development programs designed to meet local and statewide needs;
- Adult literacy and other basic skills programs for adults; and
- Such other purposes as may be prescribed by the Texas Higher Education Coordinating Board or local governing board(s) in the best interest of post-secondary education in Texas.

Furthermore, Kilgore College will continue to realize its purpose by (1) providing an open door institution, (2) providing a comprehensive curriculum, (3) providing comprehensive support services, and (4) maintaining a community orientation. The instructional program will continue to offer a variety of opportunities through academic transfer curriculum, occupational education, continuing education, and remedial education.

In the biennium 2016-2017, Kilgore College will endeavor to meet the general goals and objectives of all community colleges in Texas and will also be working toward the following objectives:

1. Kilgore College will continue to offer academic and technical degree programs that challenge and meet the needs of the college and university bound students.
2. Kilgore College will continue to provide the necessary human, physical, and financial resources to promote technical vocational programs which meet the needs of its students and simultaneously respond to the needs of business and industry in the service area, with increased emphasis on customized workforce training.
3. Kilgore College will continue to allocate the necessary resources to aggressively assess students' strengths and weaknesses in reading, writing, and mathematics; and, to provide quality remedial instruction to students needing basic skills instruction.
4. Kilgore College will continue to emphasize the development of "enrichment programs" designed to enrich the lives of its students and residents of the service area.
5. Kilgore College will continue to expand its offerings for the adult population in its service area.
6. Kilgore College will continue its program to renovate and rehabilitate its physical plant to provide quality facilities for its instructional programs.
7. Kilgore College will continue its plan initiated to place emphasis on maintaining a sound financial structure for the institution.

Administrator's Statement

8/1/2014 2:19:30PM

84th Regular Session, Agency Submission, Version 1
Automated Budget and Evaluation System of Texas (ABEST)

967 Kilgore College

8. Kilgore College will continue an aggressive technology program to implement distance education opportunities.

Because Kilgore College is a comprehensive community college, a significant part of its mission is “extension and public service.” Through programs like the College Fitness Center, the East Texas Oil Museum, the Child Development Center and the Texas Shakespeare Festival, Kilgore College continues to reach out to meet the needs of the total community, in addition to its fine instructional programs. In all that it attempts, Kilgore College aspires to live up to its motto, Emphasis Excellence.

Kilgore College understands that the most critical part of our mission focuses on the success of the students who seek educational opportunities at our institution. We also recognize that we must have a partner in the State of Texas if we are going to be effective in serving our students and our communities. To best accomplish the goal of increasing student success, we support the Texas Association of Community Colleges formal request (letter dated July 16, 2014) that the 84th Legislature provide \$2.011 billion for student success funding for the 2016-17 biennium. Community colleges support student success in Texas no matter where students are starting from or where their educational paths take them. To ensure the effectiveness of this effort the state of Texas must continue to be a partner with its local community colleges. To accomplish this goal of increasing student success, we believe the state should continue with the new funding strategy implemented during the 83rd legislative session. The \$2.011 billion student success funding should be appropriated through three strategies in the General Appropriations Act: Core Operations; Student Success Points; and Contact Hours. Kilgore College relies on appropriate funding from the Texas Legislature to be successful in its mission. Kilgore College sees that growth must also be funded. Without funding for growth education and success will be diluted or access will be restricted.

Kilgore College can plan a tight budget and serve the needs of its constituents if the legislature will continue to appropriate sufficient funding and give the assurance that part of the appropriation will not be removed at some later date. Kilgore College has been, and will continue to be, a good steward of State of Texas appropriations. Kilgore College supports the ERS insurance program and recommends that the State continue and increase the much-needed subsidy for this activity.

Texas community colleges and Kilgore College offer their constituencies and the State of Texas the best bargain for their investment. Kilgore College stands ready to train and educate the Texas leaders of tomorrow.

Members of Kilgore College Governing Board:

Board Officers:

Charles Hale, President of the Board, Kilgore
Voting Unit #3, Place 6, Central Zone
Term Expires: M

James N. Walker, Vice President of the Board, Gladewater
Voting Unit #2, Place 2, North Zone
Term Expires: May, 2015

William E. Roberson, Secretary of the Board, West Rusk
Voting Unit #1, Place 1, South Zone
Term Expires: May, 2015

Administrator's Statement

8/1/2014 2:19:30PM

84th Regular Session, Agency Submission, Version 1
Automated Budget and Evaluation System of Texas (ABEST)

967 Kilgore College

Board Members:

Scott Andrews, West Rusk
Voting Unit #1, Place 4, South Zone
Term Expires: May, 2017

C.B. "Scooter" Griffin, Jr., Kilgore
Voting Unit #3, Place 3, Central Zone
Term Expires: May, 2015

Robert D. Heath, Overton
Voting Unit #1, Place 7, South Zone
Term Expires: May, 2019

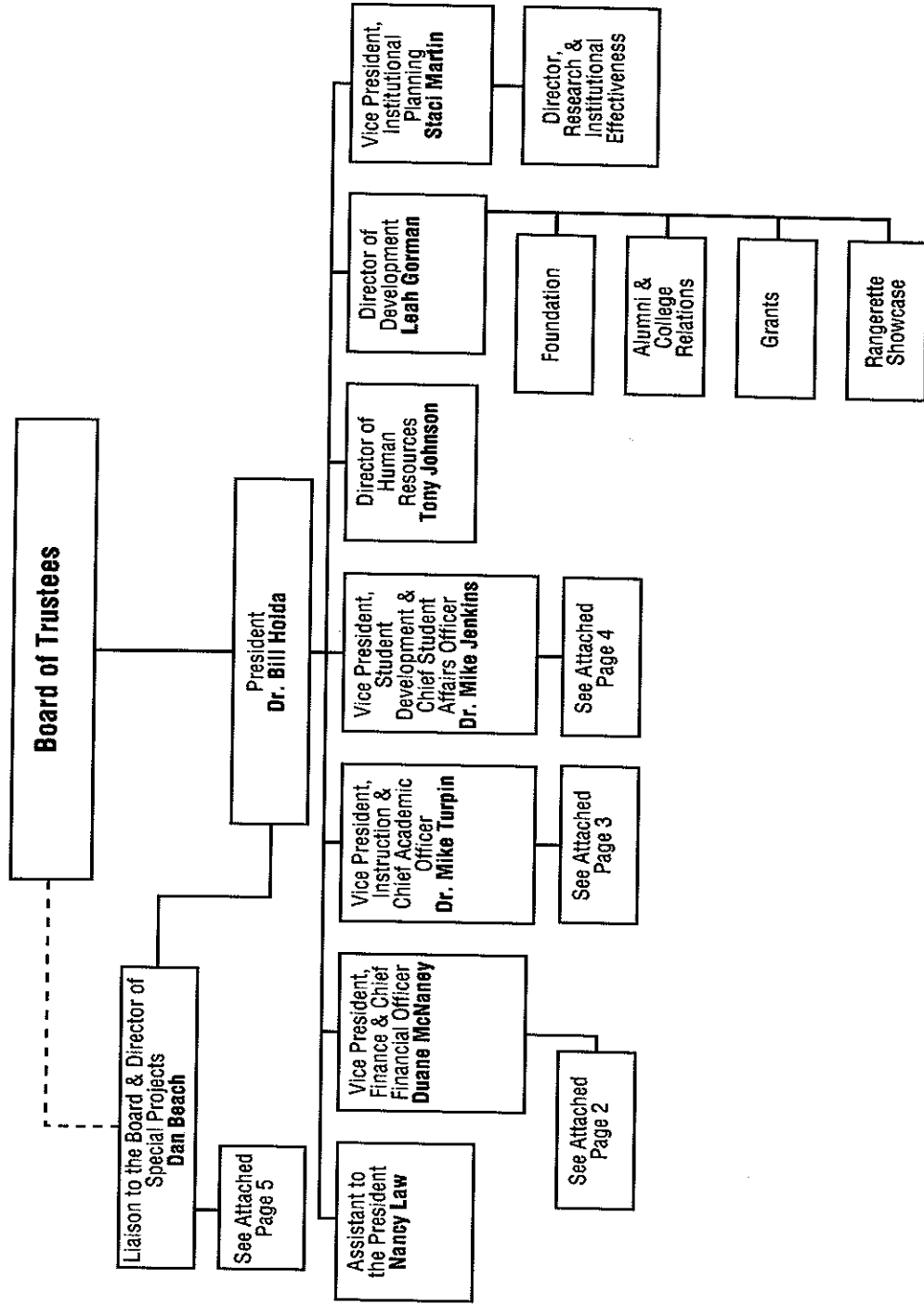
Brian Nutt, Kilgore
Voting Unit #3, Place 9, Central Zone
Term Expires: May, 2019

Joe Carrington, White Oak
Voting Unit #2, Place 8, North Zone
Term Expires: May 2019

Larry A. Woodfin, Gladewater
Voting Unit #2, Place 5, North Zone
Term Expires: May, 2017

KILGORE COLLEGE ORGANIZATIONAL CHART

Last Updated: July 2014

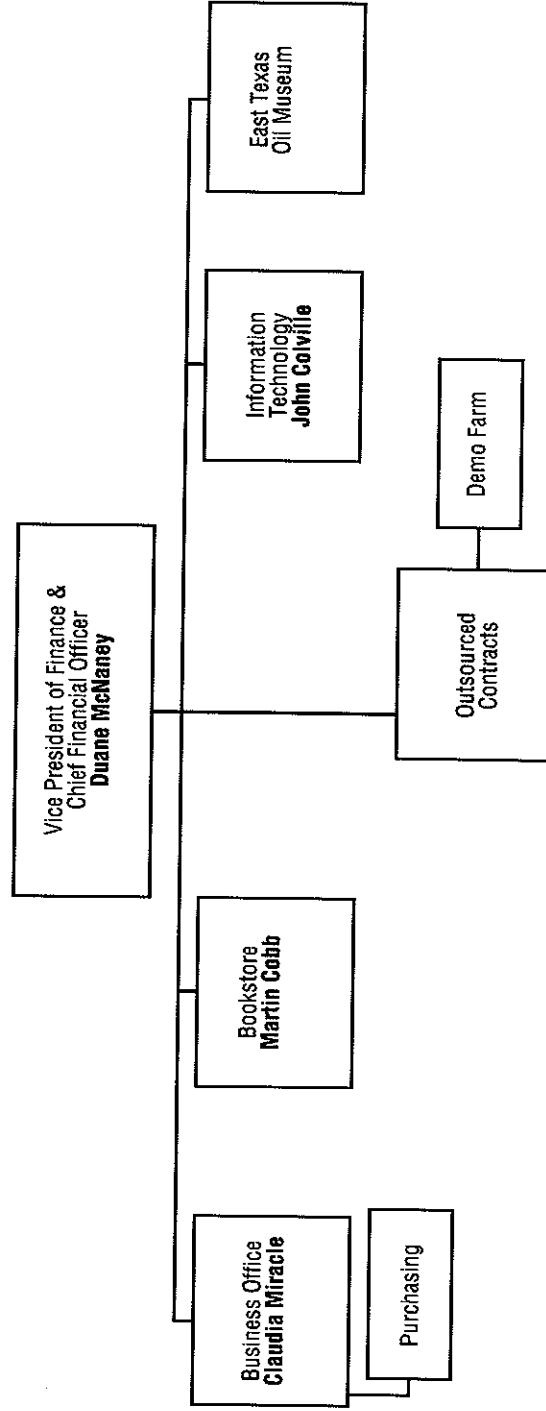


6

KILGORE COLLEGE ORGANIZATIONAL CHART

Last Updated: July 2014

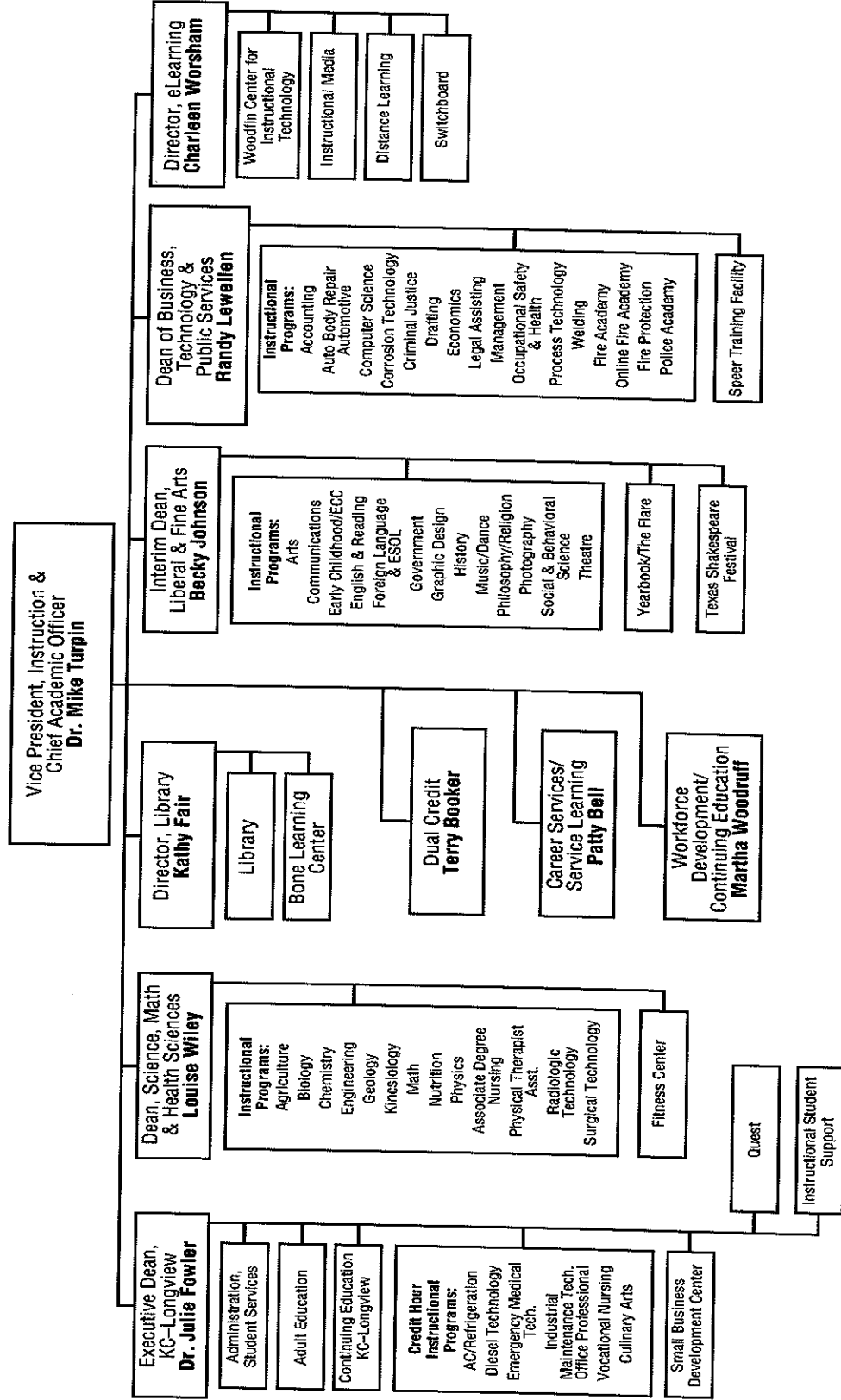
Vice President of Finance



KILGORE COLLEGE ORGANIZATIONAL CHART

Last Updated: July 2014

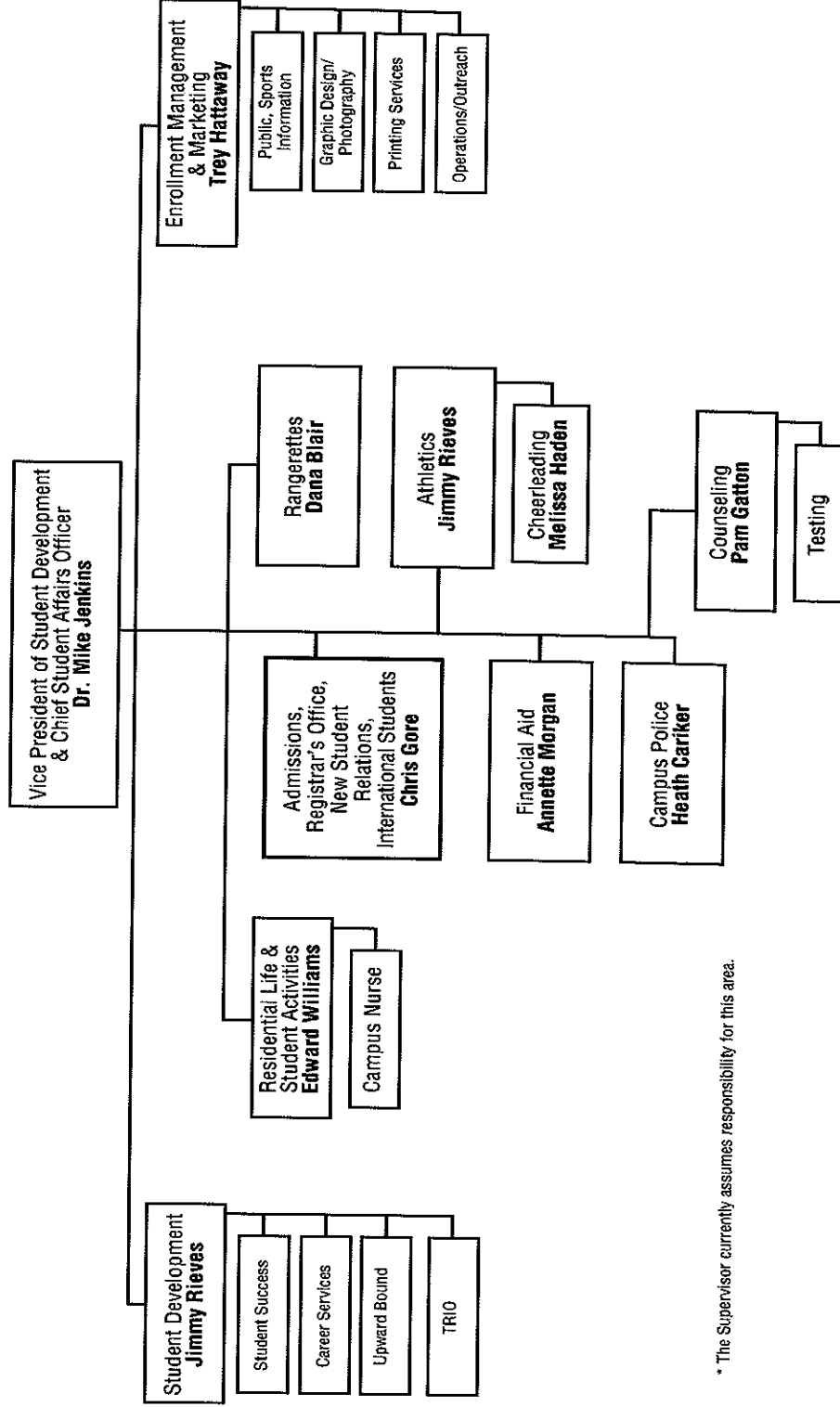
Vice President of Instruction



KILGORE COLLEGE ORGANIZATIONAL CHART

Last Updated: July 2014

Vice President of Student Development

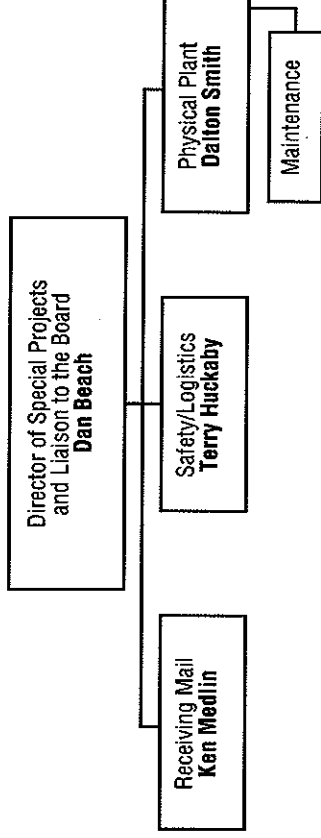


* The Supervisor currently assumes responsibility for this area.

KILGORE COLLEGE ORGANIZATIONAL CHART

Last Updated: July 2014

Director of Special Projects and Liaison to the Board



2.A. Summary of Base Request by Strategy

8/1/2014 2:19:30PM

84th Regular Session, Agency Submission, Version 1

Automated Budget and Evaluation System of Texas (ABEST)

967 Kilgore College

Goal / Objective / STRATEGY	Exp 2013	Est 2014	Bud 2015	Req 2016	Req 2017
1 Provide Instruction					
1 Provide Administration and Instructional Services					
1 ACADEMIC EDUCATION (1)	5,376,263	0	0	0	0
2 VOCATIONAL/TECHNICAL EDUCATION (1)	5,282,968	0	0	0	0
3 CORE OPERATIONS	0	500,000	500,000	0	0
4 SUCCESS POINTS	0	919,737	919,737	0	0
5 CONTACT HOUR FUNDING	0	9,163,344	9,163,344	0	0
TOTAL, GOAL 1	\$10,659,231	\$10,583,081	\$10,583,081	\$0	\$0
TOTAL, AGENCY STRATEGY REQUEST	\$10,659,231	\$10,583,081	\$10,583,081	\$0	\$0
TOTAL, AGENCY RIDER APPROPRIATIONS REQUEST*				\$0	\$0
GRAND TOTAL, AGENCY REQUEST	\$10,659,231	\$10,583,081	\$10,583,081	\$0	\$0

(1) - Formula funded strategies are not requested in 2016-17 because amounts are not determined by institutions.

2.A. Summary of Base Request by Strategy

8/1/2014 2:19:30PM

84th Regular Session, Agency Submission, Version 1

Automated Budget and Evaluation System of Texas (ABEST)

967 Kilgore College

Goal / Objective / STRATEGY	Exp 2013	Est 2014	Bud 2015	Req 2016	Req 2017
<u>METHOD OF FINANCING:</u>					
General Revenue Funds:					
1 General Revenue Fund	10,659,231	10,583,081	10,583,081	0	0
SUBTOTAL	\$10,659,231	\$10,583,081	\$10,583,081	\$0	\$0
TOTAL, METHOD OF FINANCING	\$10,659,231	\$10,583,081	\$10,583,081	\$0	\$0

*Rider appropriations for the historical years are included in the strategy amounts.

2.B. Summary of Base Request by Method of Finance
 84th Regular Session, Agency Submission, Version 1
 Automated Budget and Evaluation System of Texas (ABEST)

8/1/2014 2:19:31PM

Agency code: 967		Agency name: Kilgore College				
METHOD OF FINANCING		Exp 2013	Est 2014	Bud 2015	Req 2016	Req 2017
<u>GENERAL REVENUE</u>						
<u>1</u> General Revenue Fund						
REGULAR APPROPRIATIONS						
Regular Appropriations from MOF Table (2012-13 GAA)						
		\$10,659,231	\$0	\$0	\$0	\$0
Regular Appropriations from MOF Table (2014-15 GAA)						
		\$0	\$10,583,081	\$10,583,081	\$0	\$0
TOTAL,	General Revenue Fund	\$10,659,231	\$10,583,081	\$10,583,081	\$0	\$0
TOTAL, ALL	GENERAL REVENUE	\$10,659,231	\$10,583,081	\$10,583,081	\$0	\$0
GRAND TOTAL		\$10,659,231	\$10,583,081	\$10,583,081	\$0	\$0
FULL-TIME-EQUIVALENT POSITIONS						
TOTAL, ADJUSTED FTES						

2.B. Summary of Base Request by Method of Finance

8/1/2014 2:19:31PM

84th Regular Session, Agency Submission, Version 1

Automated Budget and Evaluation System of Texas (ABEST)

Agency code: **967**

Agency name: **Kilgore College**

METHOD OF FINANCING

Exp 2013

Est 2014

Bud 2015

Req 2016

Req 2017

**NUMBER OF 100% FEDERALLY
FUNDED FTEs**

2.F. Summary of Total Request by Strategy
 84th Regular Session, Agency Submission, Version 1
 Automated Budget and Evaluation System of Texas (ABEST)

DATE : 8/1/2014
 TIME : 2:19:31PM

Agency code: 967 Agency name: Kilgore College

Goal/Objective/STRATEGY	Base 2016	Base 2017	Exceptional 2016	Exceptional 2017	Total Request 2016	Total Request 2017
1 Provide Instruction						
1 Provide Administration and Instructional Services						
1 ACADEMIC EDUCATION	\$0	\$0	\$0	\$0	\$0	\$0
2 VOCATIONAL/TECHNICAL EDUCATION	0	0	0	0	0	0
3 CORE OPERATIONS	0	0	0	0	0	0
4 SUCCESS POINTS	0	0	0	0	0	0
5 CONTACT HOUR FUNDING	0	0	0	0	0	0
TOTAL, GOAL 1	\$0	\$0	\$0	\$0	\$0	\$0
TOTAL, AGENCY STRATEGY REQUEST	\$0	\$0	\$0	\$0	\$0	\$0
TOTAL, AGENCY RIDER APPROPRIATIONS REQUEST						
GRAND TOTAL, AGENCY REQUEST	\$0	\$0	\$0	\$0	\$0	\$0

2.F. Summary of Total Request by Strategy
 84th Regular Session, Agency Submission, Version 1
 Automated Budget and Evaluation System of Texas (ABEST)

DATE : 8/1/2014

TIME : 2:19:31PM

Agency code: 967 Agency name: Kilgore College

Goal/Objective/STRATEGY	Base 2016	Base 2017	Exceptional 2016	Exceptional 2017	Total Request 2016	Total Request 2017
General Revenue Funds:						
1 General Revenue Fund	\$0	\$0	\$0	\$0	\$0	\$0
	\$0	\$0	\$0	\$0	\$0	\$0
TOTAL, METHOD OF FINANCING	\$0	\$0	\$0	\$0	\$0	\$0

FULL TIME EQUIVALENT POSITIONS

967 Kilgore College

GOAL: 1 Provide Instruction Statewide Goal/Benchmark: 2 0
 OBJECTIVE: 1 Provide Administration and Instructional Services Service Categories:
 STRATEGY: 1 Academic Education Service: 19 Income: A.2 Age: B.3

CODE	DESCRIPTION	Exp 2013	Est 2014	Bud 2015	BL 2016 ⁽¹⁾	BL 2017 ⁽¹⁾
Objects of Expense:						
1001	SALARIES AND WAGES	\$5,376,263	\$0	\$0	\$0	\$0
TOTAL, OBJECT OF EXPENSE		\$5,376,263	\$0	\$0	\$0	\$0
Method of Financing:						
1	General Revenue Fund	\$5,376,263	\$0	\$0	\$0	\$0
SUBTOTAL, MOF (GENERAL REVENUE FUNDS)		\$5,376,263	\$0	\$0	\$0	\$0
TOTAL, METHOD OF FINANCE (INCLUDING RIDERS)					\$0	\$0
TOTAL, METHOD OF FINANCE (EXCLUDING RIDERS)		\$5,376,263	\$0	\$0	\$0	\$0

FULL TIME EQUIVALENT POSITIONS:

STRATEGY DESCRIPTION AND JUSTIFICATION:

As a two-year, comprehensive public community college, funding for administrative and instructional support in academic education supports the primary mission of Kilgore College to meet the educational and training needs of the citizens in the northeast quadrant of Texas in addition to the institution's purpose statutorily mandated in the Texas Education Code, Section 130.

(1) - Formula funded strategies are not requested in 2016-17 because amounts are not determined by institutions.

967 Kilgore College

GOAL:	1	Provide Instruction	Statewide Goal/Benchmark:	2	0
OBJECTIVE:	1	Provide Administration and Instructional Services	Service Categories:		
STRATEGY:	1	Academic Education	Service: 19	Income: A.2	Age: B.3

CODE	DESCRIPTION	Exp 2013	Est 2014	Bud 2015	BL 2016	BL 2017
------	-------------	----------	----------	----------	---------	---------

EXTERNAL/INTERNAL FACTORS IMPACTING STRATEGY:

Continued student growth continues to dilute a decreasing state appropriations.

(1) - Formula funded strategies are not requested in 2016-17 because amounts are not determined by institutions.

967 Kilgore College

GOAL: 1 Provide Instruction Statewide Goal/Benchmark: 2 0
 OBJECTIVE: 1 Provide Administration and Instructional Services Service Categories:
 STRATEGY: 2 Vocational/Technical Education Service: 19 Income: A.2 Age: B.3

CODE	DESCRIPTION	Exp 2013	Est 2014	Bud 2015	BL 2016 ⁽¹⁾	BL 2017 ⁽¹⁾
Objects of Expense:						
1001	SALARIES AND WAGES	\$5,282,968	\$0	\$0	\$0	\$0
TOTAL, OBJECT OF EXPENSE		\$5,282,968	\$0	\$0	\$0	\$0
Method of Financing:						
1	General Revenue Fund	\$5,282,968	\$0	\$0	\$0	\$0
SUBTOTAL, MOF (GENERAL REVENUE FUNDS)		\$5,282,968	\$0	\$0	\$0	\$0
TOTAL, METHOD OF FINANCE (INCLUDING RIDERS)					\$0	\$0
TOTAL, METHOD OF FINANCE (EXCLUDING RIDERS)		\$5,282,968	\$0	\$0	\$0	\$0

FULL TIME EQUIVALENT POSITIONS:

STRATEGY DESCRIPTION AND JUSTIFICATION:

As a two-year, comprehensive public community college, funding for administrative and instructional support in academic education supports the primary mission of Kilgore College to meet the educational and training needs of the citizens in the northeast quadrant of Texas in addition to the institution's purpose statutorily mandated in the Texas Education Code, Section 130.

(1) - Formula funded strategies are not requested in 2016-17 because amounts are not determined by institutions.

967 Kilgore College

GOAL:	1	Provide Instruction	Statewide Goal/Benchmark:	2	0
OBJECTIVE:	1	Provide Administration and Instructional Services	Service Categories:		
STRATEGY:	2	Vocational/Technical Education	Service: 19	Income: A.2	Age: B.3

CODE	DESCRIPTION	Exp 2013	Est 2014	Bud 2015	BL 2016	BL 2017
					(1)	(1)

EXTERNAL/INTERNAL FACTORS IMPACTING STRATEGY:

Continued student growth continues to dilute a decreasing state appropriation.

(1) - Formula funded strategies are not requested in 2016-17 because amounts are not determined by institutions.

967 Kilgore College

GOAL:	1	Provide Instruction	Statewide Goal/Benchmark:	2	0
OBJECTIVE:	1	Provide Administration and Instructional Services	Service Categories:		
STRATEGY:	3	Core Operations	Service: 19	Income: A.2	Age: B.3

CODE	DESCRIPTION	Exp 2013	Est 2014	Bud 2015	BL 2016	BL 2017
Objects of Expense:						
1001	SALARIES AND WAGES	\$0	\$500,000	\$500,000	\$0	\$0
TOTAL, OBJECT OF EXPENSE		\$0	\$500,000	\$500,000	\$0	\$0
Method of Financing:						
1	General Revenue Fund	\$0	\$500,000	\$500,000	\$0	\$0
SUBTOTAL, MOF (GENERAL REVENUE FUNDS)		\$0	\$500,000	\$500,000	\$0	\$0
TOTAL, METHOD OF FINANCE (INCLUDING RIDERS)					\$0	\$0
TOTAL, METHOD OF FINANCE (EXCLUDING RIDERS)		\$0	\$500,000	\$500,000	\$0	\$0

FULL TIME EQUIVALENT POSITIONS:

STRATEGY DESCRIPTION AND JUSTIFICATION:

EXTERNAL/INTERNAL FACTORS IMPACTING STRATEGY:

967 Kilgore College

GOAL:	1	Provide Instruction	Statewide Goal/Benchmark:	2	0
OBJECTIVE:	1	Provide Administration and Instructional Services	Service Categories:		
STRATEGY:	4	Success Points	Service: 19	Income: A.2	Age: B.3

CODE	DESCRIPTION	Exp 2013	Est 2014	Bud 2015	BL 2016	BL 2017
Objects of Expense:						
1001	SALARIES AND WAGES	\$0	\$919,737	\$919,737	\$0	\$0
TOTAL, OBJECT OF EXPENSE		\$0	\$919,737	\$919,737	\$0	\$0
Method of Financing:						
1	General Revenue Fund	\$0	\$919,737	\$919,737	\$0	\$0
SUBTOTAL, MOF (GENERAL REVENUE FUNDS)		\$0	\$919,737	\$919,737	\$0	\$0
TOTAL, METHOD OF FINANCE (INCLUDING RIDERS)					\$0	\$0
TOTAL, METHOD OF FINANCE (EXCLUDING RIDERS)		\$0	\$919,737	\$919,737	\$0	\$0

FULL TIME EQUIVALENT POSITIONS:

STRATEGY DESCRIPTION AND JUSTIFICATION:

EXTERNAL/INTERNAL FACTORS IMPACTING STRATEGY:

967 Kilgore College

GOAL:	1	Provide Instruction	Statewide Goal/Benchmark:	2	0
OBJECTIVE:	1	Provide Administration and Instructional Services	Service Categories:		
STRATEGY:	5	Contact Hour Funding	Service:	19	Income: A.2 Age: B.3

CODE	DESCRIPTION	Exp 2013	Est 2014	Bud 2015	BL 2016	BL 2017
Objects of Expense:						
1001	SALARIES AND WAGES	\$0	\$9,163,344	\$9,163,344	\$0	\$0
TOTAL, OBJECT OF EXPENSE		\$0	\$9,163,344	\$9,163,344	\$0	\$0
Method of Financing:						
1	General Revenue Fund	\$0	\$9,163,344	\$9,163,344	\$0	\$0
SUBTOTAL, MOF (GENERAL REVENUE FUNDS)		\$0	\$9,163,344	\$9,163,344	\$0	\$0
TOTAL, METHOD OF FINANCE (INCLUDING RIDERS)					\$0	\$0
TOTAL, METHOD OF FINANCE (EXCLUDING RIDERS)		\$0	\$9,163,344	\$9,163,344	\$0	\$0

FULL TIME EQUIVALENT POSITIONS:

STRATEGY DESCRIPTION AND JUSTIFICATION:

EXTERNAL/INTERNAL FACTORS IMPACTING STRATEGY:

SUMMARY TOTALS:

OBJECTS OF EXPENSE:	\$10,659,231	\$10,583,081	\$10,583,081	\$0	\$0
METHODS OF FINANCE (INCLUDING RIDERS):				\$0	\$0
METHODS OF FINANCE (EXCLUDING RIDERS):	\$10,659,231	\$10,583,081	\$10,583,081	\$0	\$0
FULL TIME EQUIVALENT POSITIONS:					

Schedule 3C: Group Insurance Data Elements (Community Colleges)
 84th Regular Session, Agency Submission, Version 1
 Automated Budget and Evaluation System of Texas (ABEST)

8/1/2014 2:19:32PM

967 Kilgore College

	Total I & A Enrollment	Local Non I & A	Total Enrollment
FULL TIME ACTIVES			
1a Employee Only	153	32	185
2a Employee and Children	38	11	49
3a Employee and Spouse	45	7	52
4a Employee and Family	61	6	67
5a Eligible, Opt Out	6	0	6
6a Eligible, Not Enrolled	0	0	0
Total for this Section	303	56	359
PART TIME ACTIVES			
1b Employee Only	0	0	0
2b Employee and Children	0	0	0
3b Employee and Spouse	0	0	0
4b Employee and Family	0	0	0
5b Eligible, Opt Out	0	0	0
6b Eligible, Not Enrolled	0	0	0
Total for this Section	0	0	0
Total Active Enrollment	303	56	359

967 Kilgore College

	Total I & A Enrollment	Local Non I & A	Total Enrollment
FULL TIME RETIREES by ERS			
1c Employee Only	0	0	0
2c Employee and Children	0	0	0
3c Employee and Spouse	0	0	0
4c Employee and Family	0	0	0
5c Eligible, Opt Out	0	0	0
6c Eligible, Not Enrolled	0	0	0
Total for this Section	0	0	0
PART TIME RETIREES by ERS			
1d Employee Only	0	0	0
2d Employee and Children	0	0	0
3d Employee and Spouse	0	0	0
4d Employee and Family	0	0	0
5d Eligible, Opt Out	0	0	0
6d Eligible, Not Enrolled	0	0	0
Total for this Section	0	0	0
Total Retirees Enrollment	0	0	0
TOTAL FULL TIME ENROLLMENT			
1e Employee Only	153	32	185
2e Employee and Children	38	11	49
3e Employee and Spouse	45	7	52
4e Employee and Family	61	6	67
5e Eligible, Opt Out	6	0	6
6e Eligible, Not Enrolled	0	0	0
Total for this Section	303	56	359

967 Kilgore College

	Total I & A Enrollment	Local Non I & A	Total Enrollment
TOTAL ENROLLMENT			
1f Employee Only	153	32	185
2f Employee and Children	38	11	49
3f Employee and Spouse	45	7	52
4f Employee and Family	61	6	67
5f Eligible, Opt Out	6	0	6
6f Eligible, Not Enrolled	0	0	0
Total for this Section	303	56	359