

# ***REQUEST FOR LEGISLATIVE APPROPRIATIONS***

For Fiscal Years 2016 and 2017

Submitted to the  
Governor's Office of Budget and Planning  
and the Legislative Budget Board

by

**Texas A&M International University**



Revised October 17, 2014



## CERTIFICATE

Agency Name Texas A&M International University

This is to certify that the information contained in the agency Legislative Appropriations Request filed with the Legislative Budget Board (LBB) and the Governor's Office of Budget, Planning and Policy (GOBPP) is accurate to the best of my knowledge and that the electronic submission to the LBB via the Automated Budget and Evaluation System of Texas (ABEST) and the PDF file submitted via the LBB Document Submission application are identical.

Additionally, should it become likely at any time that unexpended balances will accrue for any account, the LBB and the GOBPP will be notified in writing in accordance with Article IX, Section 7.01 (2014-15 GAA).

**Chief Executive Office or Presiding Judge**

Ray M. Keck, III  
Signature

Ray M. Keck, III

Printed Name

President

Title

August 4, 2014

Date

**Board or Commission Chair**

Phil Adams  
Signature

Phil Adams

Printed Name

Chairman, Board of Regents

Title

August 4, 2014

Date

**Chief Financial Officer**

Juan J. Castillo  
Signature

Juan J. Castillo

Printed Name

**Vice President for Finance & Administration**

Title

August 4, 2014

Date

# TABLE OF CONTENTS

	<u>PAGE</u>
Administrator’s Statement.....	1
Departmental Organizational Structure.....	5
Agency Mission.....	6
Summary of Request	
Summary of Base Request by Strategy.....	7
Summary of Base Request by Method of Finance.....	11
Summary of Base Request by Object of Expense.....	15
Summary of Base Request by Objective Outcomes.....	16
Summary of Base Request by Exceptional Items Request.....	19
Summary of Total Request by Strategy.....	20
Summary of Total Request Objective Outcomes.....	24
Strategy Request	
Provide Instructional and Operations Support	
Operations Support.....	28
Staff Group Insurance Premiums.....	31
Workers’ Compensation Insurance.....	32
Unemployment Compensation Insurance.....	34
Texas Public Education Grants.....	36
Provide Infrastructure Support	
Educational and General Space Support.....	37
Tuition Revenue Bond Retirement.....	39
Small Institution Supplement.....	40
Provide Special Item Support	
PhD Program in Business.....	41
Faculty Enhancement.....	43
Academic and Student Support.....	45
Institute for International Trade.....	47

Small Business Development Center.....	50
Institutional Enhancement.....	52
Outreach and Enrollment.....	54
Exceptional Item Request.....	56
Research Funds	
Research Development Fund.....	58
Agency Summary.....	60
Exceptional Item Request Schedule	
Renovation of Library.....	61
Petroleum Engineering Initiative.....	63
Texas Academy of International and STEM Studies.....	65
Small Business Development Center.....	67
Repurposing of Kinesiology Building.....	68
Exceptional Item Strategy Allocation Schedule.....	70
Exceptional Item Strategy Request.....	75
Supporting Schedules	
Historically Underutilized Business (HUB) Supporting Schedule.....	77
Estimated Funds Outside the GAA.....	78
Ten Percent Biennial Base Reduction Options.....	79
Summary of Request for Capital Project Financing.....	81
Higher Education Supporting Schedules	
Schedule 1A - Other Educational and General Income.....	82
Schedule 2 - Grand Total Educational, General & Other Funds.....	85
Schedule 3B - Staff Group Insurance Data Elements (UT/ A&M).....	86
Schedule 4 - Computation of OASI.....	89
Schedule 5 - Calculation of Retirement Proportionality and ORP Differential.....	90
Schedule 6 - Constitutional Capital Funding.....	91
Schedule 7 - Personnel.....	92
Schedule 8A - Tuition Revenue Bond Projects.....	94
Schedule 8D - Tuition Revenue Bonds Request by Project.....	96
Schedule 9 - Special Item Information.....	97

## Schedules Not Included

<b>Agency Code:</b> 761	<b>Agency Name:</b> Texas A&M International University	<b>Prepared By:</b> Fred Juarez III	<b>Date:</b> 8/04/2014
----------------------------	---	--	---------------------------

For the schedules identified below, the Texas A&M International University administration has no information to report or the schedule is not applicable. Accordingly, these schedules have been excluded from the Texas A&M International University Legislative Appropriations Request for the 2016-2017 biennium.

### Schedule

<b>Number</b>	<b>Name</b>
3.C.	Rider Appropriations and Unexpended Balances Request
5.A-E	Capital Budget
6.C.	Federal Funds Supporting Schedule
6.D.	Federal Funds Tracking Schedule
6.E.	Estimated Revenue Collections Supporting Schedule
6.F.a.	Advisory Committee Supporting Schedule - Part A
6.F.b.	Advisory Committee Supporting Schedule - Part B
6.J.a.	Part A Budgetary Impacts Related to Federal Health Care Reform Schedule
6.J.b.	Part B Summary of Budgetary Impacts Related to Federal Health Care
7.A.	Indirect Administrative and Support Cost
7.B.	Direct Administrative and Support Costs
	Capital Budget Allocation to Strategies by Project - Exceptional
	Capital Budget Project Schedule - Exceptional
	Homeland Security Funding
Schedule 3A	Staff Group Insurance Data Elements (ERS)
Schedule 3D	Group Insurance Data Elements (Supplemental)
Schedule 5B	Tuition Revenue Bond Issuance History
Schedule 8C	Revenue Capacity for Tuition Revenue Bond Projects

## Administrator's Statement

10/15/2014 4:09:24PM

84th Regular Session, Agency Submission, Version 1  
Automated Budget and Evaluation System of Texas (ABEST)

---

### 761 Texas A&M International University

---

The South Texas Border Region:

As the largest port of entry on the U.S.-Mexico border, Laredo continues to be an economic engine in the region propelled by the international business, banking, and manufacturing industries. In addition to the remarkable growth, 35% of the population is under 18 years of age, and 83% of those 25 years and older do not hold at least a baccalaureate degree, so their children are overwhelmingly the first in their family to attend college. For these young people to prosper economically, a great proportion of them must enter and finish college.

Serving a young population in a rapidly growing city, Texas A&M International University has also shared in this rapid growth, with an enrollment that has more than doubled since 2001 to over 7,400 students. Thanks to the State's past investment and the University's careful use of those funds to provide academic and financial support to these students, the University has proven its ability to attract, retain, and graduate students who in decades past would not have attended or graduated college. For Texas A&M International University to continue to do its share in achieving the Texas Higher Education Coordinating Board's "Closing the Gaps" targets by 2015, funding remains critical. The reductions in the 82nd Legislative Session, \$9.2 million for the University in the 2012-13 biennium, resulted in a funding level comparable to the 2006-07 biennium when enrollment was 40% of what it was in Fall 2012. The 83rd Legislative Session restored \$1.5 million in funding, giving the University an appropriation below that of the 2008-09 biennium when enrollment was 30% of what it is today.

The University still has much it can do in fulfilling its mission of improving "...the quality of lives for the citizens of the border region," and given adequate funding, it will continue its success in doing so.

Student Success:

Texas A&M International University aspires to become a premier international university, serving as the agent of change for the people of the region, the nation, and the world through multicultural teaching, research, and service. Beginning with an aggressive outreach initiative which takes the crucial strategies for enrolling and succeeding at the University to high schools throughout the south Texas region, a broad array of programs targeting academic success and personal growth empower our students to develop their talents for successful careers and fulfilling lives. Our Student Success Program brings together the coordinated efforts of peer mentors, tutors, academic and financial advisors, and counselors.

The success of our program is evident in our enrollment growth, along with our retention and graduation rates of an overwhelmingly Hispanic population, most of whom (83%) receive some form of financial aid. The retention rate of our students hovers between 69% and 74%, and the six-year graduation rate is 51% for many young men and women who are the first in their families to pursue a college education.

Community College Relationships:

Texas A&M International University has built a strong relationship with Laredo Community College (LCC). From 2+2 articulation agreements which ensure students enroll in courses necessary for their degree plan, to staffing an outreach office at the LCC campus to provide one-stop services to students wishing to transfer, the University and College share the goal of student success. The University pursues an aggressive outreach to these students by conducting three transfer fairs per year at LCC which assist students with the transition to the University. Perhaps most exciting is the recent \$3.8 million Department of Education Title V grant aimed at enhancing the transfer-student process, enabling students to make the seamless transition from an associate to a baccalaureate degree. This joint grant highlights the University's and LCC's shared values and mutual desire to improve the ease and transparency of the transfer process allowing students to maintain their focus on degree attainment. Such a partnership advances not only the educational goals of both institutions, but most importantly, those of the students.

**Administrator's Statement**

10/15/2014 4:09:24PM

84th Regular Session, Agency Submission, Version 1  
Automated Budget and Evaluation System of Texas (ABEST)

---

**761 Texas A&M International University**

---

Veterans' Affairs:

Texas A&M International University is committed to being military friendly by assisting all veterans with the transition to University life. Upon admission to the University, veterans have a one-on-one meeting with the veteran affairs coordinator to review specific degree plan requirements and the services offered by the University. Thereafter, veterans are assisted each semester with the educational benefit certification process to ensure the timely awarding of their veteran benefits and are also advised of important upcoming events and deadlines. The veteran affairs coordinator also works with Laredo Community College and other institutions of higher education to assist veterans as they transfer between institutions to ensure accurate and timely benefit awards.

High Priority Requests of The Texas A&M University System and All of Higher Education:

Base Funding – Our highest priority is additional funding for the formulas. The formula funding ensures that our institutions can provide high quality teaching and support services for our growing student populations to prepare them for the workforce. Our A&M Agencies need base funding support much in the same manner as the formulas that provide basic, on-going support for the academics and health related institutions. We also request support for other base funding streams, including support for research through the Competitive Knowledge Fund, continuation of Institutional Enhancement, and support for the Higher Education Fund.

Outcomes Based Funding - As we continue to seek opportunities for increased efficiencies and better results, our board is actively exploring ways to incorporate performance and outcomes into our internal processes. We welcome dialog on this issue during the legislative session.

Capital Projects – Our institutions need state support to fund capital projects for critically needed classrooms and labs necessary to educate our growing student enrollments and to conduct research. Our system has resourcefully taken care of many needs by carefully applying every revenue stream available. We have carefully pared down the projects that we are bringing forward for your consideration to include only our most critical needs that we do not have the resources to support.

Higher Education Group Health Insurance – We request funding to cover increases in enrollments and in health care costs that are beyond our control. We would also request restoration of some increment of the differential funding level for our employees as compared to the employees in the state employees ERS group insurance plan.

Student Financial Aid – We request increased support for student financial aid because it is vitally important for our students and families. However, since it is a method of paying for tuition and fees and does not increase much needed funding for the universities, we request increases to TEXAS grants and other financial aid programs be made in conjunction with funding the formula costs of educating students. We appreciate the relief provided by the 83rd Legislature for the Hazlewood program; however, this continues to be a growing cost to our institutions.

High Priority Requests for Texas A&M International University:

Base funding for the University consists of formula funding and \$17,035,482 in three special items we use to support student success, namely: Institutional Enhancement, Academic and Student Support, and Outreach and Enrollment. Together, these three special item strategies fund 57% of Education & General (E&G) faculty and are therefore an integral part of the base funding for the University. It is critically important to the success of the students of the South Texas region that this base funding continue to be provided.

Existing Special Items – It is also vital that the University retain the funding for existing special items which include \$11,853,452 for Institutional Enhancement,

**Administrator's Statement**

10/15/2014 4:09:24PM

84th Regular Session, Agency Submission, Version 1  
Automated Budget and Evaluation System of Texas (ABEST)

---

**761 Texas A&M International University**

---

\$3,682,030 for Academic and Student Support, \$1,500,000 Outreach and Enrollment, \$390,054 for the Institute for International Trade, and \$363,000 for the Small Business Development Center.

Exceptional Items – The University is requesting the following exceptional items to provide the resources necessary to sustain growth and close the gaps:

- Petroleum Engineering Initiative - \$6,000,000 (biennial amount) – This will permit the University to expand its existing engineering program to include petroleum engineering and create an International Petroleum Institute.
- Texas Academy of International and STEM Studies - \$2,000,000 (biennial amount) – This would allow for the expansion of the Texas Academy of International Studies which was authorized by the 79th Legislature to provide academically gifted and highly motivated junior and senior high school students with a challenging university-level curriculum.
- Small Business Development Center - \$36,300 (biennial amount) – This revenue-neutral item will increase this special item by 10% to help spur economic development in Laredo and the surrounding South Texas region.

Capital Projects – The University is requesting the following capital projects to provide the physical resources necessary to sustain growth by eliminating or reducing The Coordinating Board's calculated deficit of 138,196 square feet (as of fall 2013):

- Renovation of Library through Addition of Instructional and Support Spaces - \$69,000,000.

When the University moved to the new campus in 1995, enrollment stood at just over 2,000. Today, with enrollment exceeding 7,400 students, the library, instructional and lab facilities are no longer adequate. In order to increase space, diverse services and functions originally housed in the library building must be relocated. The University believes it can provide a 10% match to this project's funding by bonding a portion of its annual HEF allocation.

- Repurposing of Kinesiology Building for Labs through Addition of Convocation Center - \$66,000,000.

The existing Kinesiology and Convocation Building was constructed in 1997. With seating capped at 1,400 seats, the building is no longer functional for University-wide events such as commencement exercises. The construction of a Health, Wellness, Kinesiology and Convocation Center will enable renovations to the existing Kinesiology and Convocation Building to include larger classrooms, laboratories, and offices. The City of Laredo has pledged a significant investment of \$20,000,000 toward the development of this project including a series of fields envisioned to surround it. This community partnership represents in excess of 20% of the total project cost.

The Coordinating Board formula shows that the University already suffers from a significant space deficit. We remain crowded today, and capital project funding, if appropriated, will provide new facilities which we can occupy by 2018. With even modest growth, today's campus will simply not be able to hold the student population.

Effects of a 10% Reduction:

A 10% reduction for the University amounts to \$1,720,294, and reduction of this significance would almost certainly result in layoffs and the replacement of full-time faculty with lower-cost adjuncts. Unfortunately, the scarcity of qualified adjuncts in the Laredo region makes it impossible to substitute adjuncts for full-time faculty without compromising the quality of the academic programs. It is very likely that a reduction of academic program offerings would also follow. The University would have to restructure and downsize significantly, resulting in a substantial reduction in enrollment.

Criminal Background Checks:



**Administrator's Statement**

10/15/2014 4:09:24PM

84th Regular Session, Agency Submission, Version 1  
Automated Budget and Evaluation System of Texas (ABEST)

---

**761 Texas A&M International University**

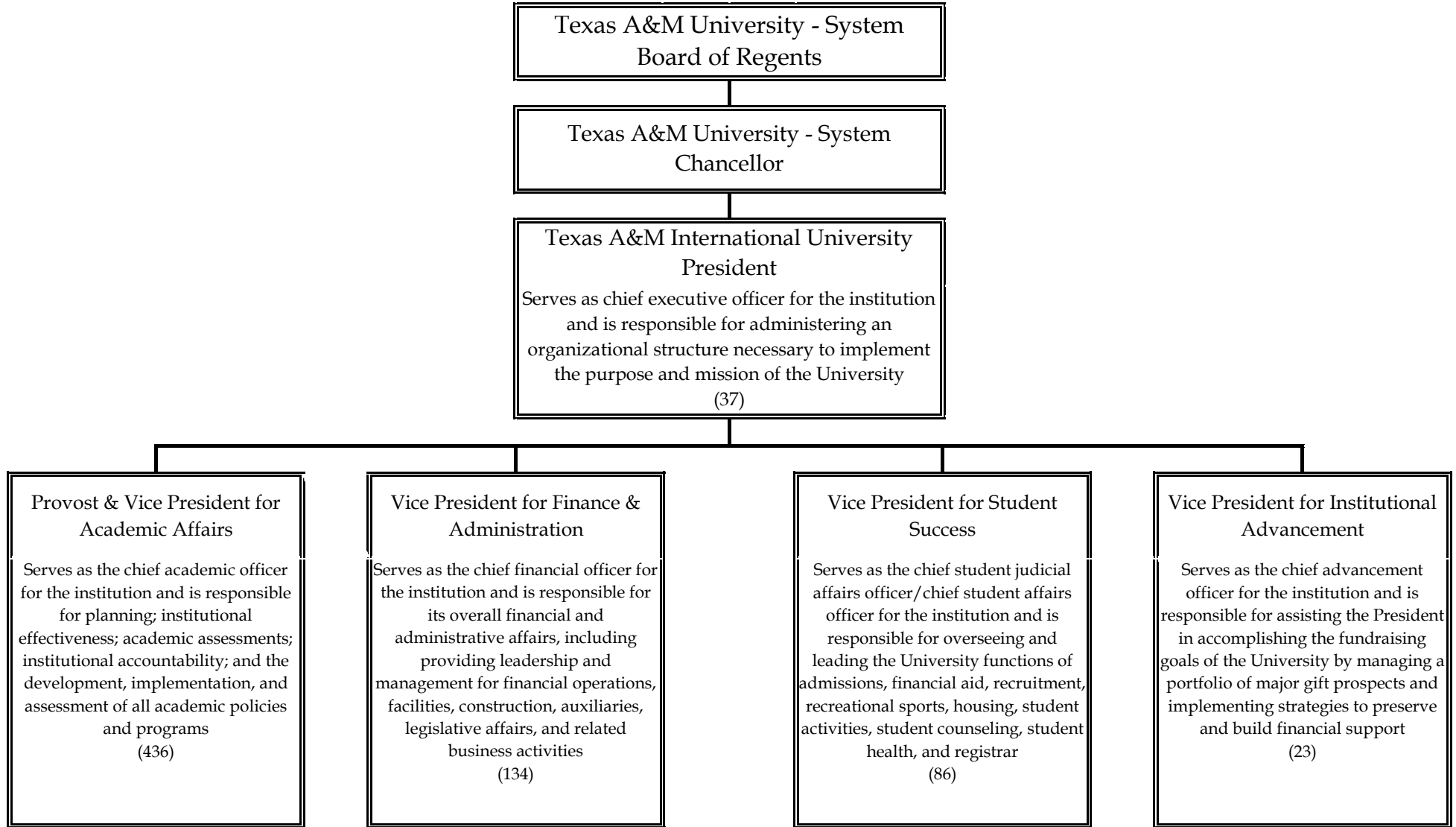
---

The University has established and implemented a University rule which outlines the process for conducting criminal background checks on all new hires in accordance with Texas A&M University System regulations.

Summary of Request:

The creation of Texas A&M International University has brought new life to the citizens of South Texas. Today, it is possible to achieve the great American dream even if one is born to parents who never finished high school or attended college. Geographic isolation no longer undermines hope for a better life. The young men and women of this region, overwhelmingly Hispanic, can build better lives for themselves and their families. Adequate funding to sustain existing and new initiatives will ensure fulfillment of the University's mission, support student success, and close the gaps.

# TEXAS A&M INTERNATIONAL UNIVERSITY™



**SESSION AGENCY MISSION**

84th Regular Session, Agency Submission, Version 1  
Automated Budget and Evaluation System of Texas (ABEST)

DATE: 10/15/2014

TIME: 4:09:24PM

PAGE: 1 OF 1

---

Agency code: **761**

Agency name: **Texas A&M International University**

**AGENCY MISSION**

---

Texas A&M International University (TAMIU), a member of The Texas A&M University System, prepares students for leadership roles in an increasingly complex, culturally diverse state, national, and global society. TAMIU provides a learning environment built on a solid academic foundation in the arts and sciences. The University offers a range of baccalaureate and master's programs and the Doctor of Philosophy degree in International Business Administration. In addition, the University pursues a progressive agenda for global study and understanding across all disciplines.

Through instruction, faculty and student research, and public service, Texas A&M International improves the quality of lives for citizens of the border region, the state of Texas, and national and international communities.

2.A. Summary of Base Request by Strategy

10/15/2014 4:09:25PM

84th Regular Session, Agency Submission, Version 1

Automated Budget and Evaluation System of Texas (ABEST)

761 Texas A&M International University

Goal / Objective / STRATEGY	Exp 2013	Est 2014	Bud 2015	Req 2016	Req 2017
<b>1</b> Provide Instructional and Operations Support					
<b>1</b> Provide Instructional and Operations Support					
<b>1 OPERATIONS SUPPORT</b> (1)	14,893,182	14,522,845	14,544,329	0	0
<b>3 STAFF GROUP INSURANCE PREMIUMS</b>	548,280	706,859	874,828	845,000	845,000
<b>4 WORKERS' COMPENSATION INSURANCE</b>	35,919	41,336	26,391	26,391	26,391
<b>5 UNEMPLOYMENT COMPENSATION INSURANCE</b>	6,929	17,595	199	199	199
<b>6 TEXAS PUBLIC EDUCATION GRANTS</b>	1,090,359	1,123,421	1,134,291	1,135,000	1,135,000
<b>TOTAL, GOAL</b> <b>1</b>	<b>\$16,574,669</b>	<b>\$16,412,056</b>	<b>\$16,580,038</b>	<b>\$2,006,590</b>	<b>\$2,006,590</b>
<b>2</b> Provide Infrastructure Support					
<b>1</b> Provide Operation and Maintenance of E&G Space					
<b>1 E&amp;G SPACE SUPPORT</b> (1)	3,463,124	3,471,420	3,508,447	0	0
<b>2 TUITION REVENUE BOND RETIREMENT</b>	8,442,909	8,406,072	7,795,114	6,636,348	6,650,315
<b>5 SMALL INSTITUTION SUPPLEMENT</b> (1)	0	418,050	418,050	0	0

(1) - Formula funded strategies are not requested in 2016-17 because amounts are not determined by institutions.

2.A. Summary of Base Request by Strategy

10/15/2014 4:09:25PM

84th Regular Session, Agency Submission, Version 1

Automated Budget and Evaluation System of Texas (ABEST)

761 Texas A&M International University

Goal / Objective / STRATEGY		Exp 2013	Est 2014	Bud 2015	Req 2016	Req 2017
TOTAL, GOAL	2	\$11,906,033	\$12,295,542	\$11,721,611	\$6,636,348	\$6,650,315

3 Provide Special Item Support

1 Instructional Support Special Item Support

1 PHD PROGRAM IN BUSINESS		1,118,355	0	0	0	0
2 FACULTY ENHANCEMENT		751,813	0	0	0	0
3 ACADEMIC AND STUDENT SUPPORT		0	1,841,015	1,841,015	1,841,015	1,841,015

3 Public Service Special Item Support

1 INSTITUTE FOR INTERNATIONAL TRADE		244,776	332,913	332,914	195,027	195,027
2 SMALL BUSINESS DEVELOPMENT CENTER		168,921	181,500	181,500	181,500	181,500

4 Institutional Support Special Item Support

1 INSTITUTIONAL ENHANCEMENT		5,426,726	5,926,726	5,926,726	5,926,726	5,926,726
3 OUTREACH AND ENROLLMENT		768,292	750,000	750,000	750,000	750,000

5 Exceptional Item Request

2.A. Summary of Base Request by Strategy

10/15/2014 4:09:25PM

84th Regular Session, Agency Submission, Version 1

Automated Budget and Evaluation System of Texas (ABEST)

761 Texas A&M International University

Goal / Objective / STRATEGY		Exp 2013	Est 2014	Bud 2015	Req 2016	Req 2017
<b>1 EXCEPTIONAL ITEM REQUEST</b>		0	0	0	0	0
<b>TOTAL, GOAL</b>	<b>3</b>	<b>\$8,478,883</b>	<b>\$9,032,154</b>	<b>\$9,032,155</b>	<b>\$8,894,268</b>	<b>\$8,894,268</b>
<b>6 Research Funds</b>						
<b>1 Research Funds</b>						
<b>1 RESEARCH DEVELOPMENT FUND</b>		126,623	247,339	247,339	0	0
<b>TOTAL, GOAL</b>	<b>6</b>	<b>\$126,623</b>	<b>\$247,339</b>	<b>\$247,339</b>	<b>\$0</b>	<b>\$0</b>
<b>TOTAL, AGENCY STRATEGY REQUEST</b>		<b>\$37,086,208</b>	<b>\$37,987,091</b>	<b>\$37,581,143</b>	<b>\$17,537,206</b>	<b>\$17,551,173</b>
<b>TOTAL, AGENCY RIDER APPROPRIATIONS REQUEST*</b>					<b>\$0</b>	<b>\$0</b>
<b>GRAND TOTAL, AGENCY REQUEST</b>		<b>\$37,086,208</b>	<b>\$37,987,091</b>	<b>\$37,581,143</b>	<b>\$17,537,206</b>	<b>\$17,551,173</b>

2.A. Summary of Base Request by Strategy

10/15/2014 4:09:25PM

84th Regular Session, Agency Submission, Version 1

Automated Budget and Evaluation System of Texas (ABEST)

761 Texas A&M International University

Goal / Objective / STRATEGY	Exp 2013	Est 2014	Bud 2015	Req 2016	Req 2017
<u>METHOD OF FINANCING:</u>					
<b>General Revenue Funds:</b>					
1 General Revenue Fund	28,962,373	29,729,302	29,117,525	15,419,319	15,433,286
<b>SUBTOTAL</b>	<b>\$28,962,373</b>	<b>\$29,729,302</b>	<b>\$29,117,525</b>	<b>\$15,419,319</b>	<b>\$15,433,286</b>
<b>General Revenue Dedicated Funds:</b>					
704 Bd Authorized Tuition Inc	323,642	339,713	346,629	0	0
770 Est Oth Educ & Gen Inco	7,662,306	7,780,189	7,979,102	1,980,000	1,980,000
<b>SUBTOTAL</b>	<b>\$7,985,948</b>	<b>\$8,119,902</b>	<b>\$8,325,731</b>	<b>\$1,980,000</b>	<b>\$1,980,000</b>
<b>Other Funds:</b>					
777 Interagency Contracts	137,887	137,887	137,887	137,887	137,887
<b>SUBTOTAL</b>	<b>\$137,887</b>	<b>\$137,887</b>	<b>\$137,887</b>	<b>\$137,887</b>	<b>\$137,887</b>
<b>TOTAL, METHOD OF FINANCING</b>	<b>\$37,086,208</b>	<b>\$37,987,091</b>	<b>\$37,581,143</b>	<b>\$17,537,206</b>	<b>\$17,551,173</b>

\*Rider appropriations for the historical years are included in the strategy amounts.

2.B. Summary of Base Request by Method of Finance  
 84th Regular Session, Agency Submission, Version 1  
 Automated Budget and Evaluation System of Texas (ABEST)

10/15/2014 4:09:25PM

Agency code: **761** Agency name: **Texas A&M International University**

METHOD OF FINANCING	Exp 2013	Est 2014	Bud 2015	Req 2016	Req 2017
<b><u>GENERAL REVENUE</u></b>					
<b><u>1</u></b> General Revenue Fund					
<i>REGULAR APPROPRIATIONS</i>					
Regular Appropriations from MOF Table (2012-13 GAA)	\$28,962,373	\$0	\$0	\$0	\$0
Regular Appropriations from MOF Table (2014-15 GAA)	\$0	\$29,729,302	\$29,117,525	\$15,419,319	\$15,433,286
<b>TOTAL, General Revenue Fund</b>	<b>\$28,962,373</b>	<b>\$29,729,302</b>	<b>\$29,117,525</b>	<b>\$15,419,319</b>	<b>\$15,433,286</b>
<b>TOTAL, ALL GENERAL REVENUE</b>	<b>\$28,962,373</b>	<b>\$29,729,302</b>	<b>\$29,117,525</b>	<b>\$15,419,319</b>	<b>\$15,433,286</b>

**GENERAL REVENUE FUND - DEDICATED**

**704** GR Dedicated - Estimated Board Authorized Tuition Increases Account No. 704

*REGULAR APPROPRIATIONS*

Regular Appropriations from MOF Table (2012-13 GAA)	\$374,643	\$0	\$0	\$0	\$0
Regular Appropriations from MOF Table (2014-15 GAA)	\$0	\$357,342	\$357,342	\$0	\$0



2.B. Summary of Base Request by Method of Finance  
 84th Regular Session, Agency Submission, Version 1  
 Automated Budget and Evaluation System of Texas (ABEST)

10/15/2014 4:09:25PM

Agency code: **761** Agency name: **Texas A&M International University**

METHOD OF FINANCING	Exp 2013	Est 2014	Bud 2015	Req 2016	Req 2017
---------------------	----------	----------	----------	----------	----------

**GENERAL REVENUE FUND - DEDICATED**

*BASE ADJUSTMENT*

Base Adjustments

	\$(51,001)	\$(17,629)	\$(10,713)	\$0	\$0
--	------------	------------	------------	-----	-----

**Comments:** Revised Receipts

<b>TOTAL,</b>	<b>GR Dedicated - Estimated Board Authorized Tuition Increases Account No. 704</b>	<b>\$323,642</b>	<b>\$339,713</b>	<b>\$346,629</b>	<b>\$0</b>	<b>\$0</b>
---------------	--	------------------	------------------	------------------	------------	------------

**770** GR Dedicated - Estimated Other Educational and General Income Account No. 770

*REGULAR APPROPRIATIONS*

Regular Appropriations from MOF Table (2012-13 GAA)

	\$7,467,221	\$0	\$0	\$0	\$0
--	-------------	-----	-----	-----	-----

Regular Appropriations from MOF Table (2014-15 GAA)

	\$0	\$7,829,097	\$7,901,615	\$1,980,000	\$1,980,000
--	-----	-------------	-------------	-------------	-------------

*BASE ADJUSTMENT*

Base Adjustment

	\$195,085	\$(48,908)	\$77,487	\$0	\$0
--	-----------	------------	----------	-----	-----

**Comments:** Revised Receipts

2.B. Summary of Base Request by Method of Finance  
 84th Regular Session, Agency Submission, Version 1  
 Automated Budget and Evaluation System of Texas (ABEST)

10/15/2014 4:09:25PM

Agency code: 761		Agency name: Texas A&M International University				
METHOD OF FINANCING		Exp 2013	Est 2014	Bud 2015	Req 2016	Req 2017
<b><u>GENERAL REVENUE FUND - DEDICATED</u></b>						
TOTAL,	GR Dedicated - Estimated Other Educational and General Income Account No. 770	\$7,662,306	\$7,780,189	\$7,979,102	\$1,980,000	\$1,980,000
TOTAL GENERAL REVENUE FUND - DEDICATED - 704, 708 & 770						
		\$7,985,948	\$8,119,902	\$8,325,731	\$1,980,000	\$1,980,000
TOTAL, ALL	GENERAL REVENUE FUND - DEDICATED	\$7,985,948	\$8,119,902	\$8,325,731	\$1,980,000	\$1,980,000
TOTAL,	GR & GR-DEDICATED FUNDS	\$36,948,321	\$37,849,204	\$37,443,256	\$17,399,319	\$17,413,286
<b><u>OTHER FUNDS</u></b>						
<u>777</u> Interagency Contracts						
<i>REGULAR APPROPRIATIONS</i>						
	HB1, 82 Legislature Regular Session, Art III, Rider 3 Page 70	\$137,887	\$0	\$0	\$0	\$0
	SB1, 83 Legislature Regular Session, Art III, Rider 3 Page 76	\$0	\$137,887	\$137,887	\$137,887	\$137,887
TOTAL,	Interagency Contracts	\$137,887	\$137,887	\$137,887	\$137,887	\$137,887

**2.B. Summary of Base Request by Method of Finance**

10/15/2014 4:09:25PM

84th Regular Session, Agency Submission, Version 1

Automated Budget and Evaluation System of Texas (ABEST)

Agency code: <b>761</b>	Agency name: <b>Texas A&amp;M International University</b>				
<b>METHOD OF FINANCING</b>	<b>Exp 2013</b>	<b>Est 2014</b>	<b>Bud 2015</b>	<b>Req 2016</b>	<b>Req 2017</b>
<b>TOTAL, ALL OTHER FUNDS</b>	<b>\$137,887</b>	<b>\$137,887</b>	<b>\$137,887</b>	<b>\$137,887</b>	<b>\$137,887</b>
<b>GRAND TOTAL</b>	<b>\$37,086,208</b>	<b>\$37,987,091</b>	<b>\$37,581,143</b>	<b>\$17,537,206</b>	<b>\$17,551,173</b>

**FULL-TIME-EQUIVALENT POSITIONS**

REGULAR APPROPRIATIONS

Regular Appropriations from MOF Table (2012-13 GAA)	815.5	0.0	0.0	0.0	0.0
---	-------	-----	-----	-----	-----

Regular Appropriations from MOF Table (2014-15 GAA)	0.0	520.0	520.0	520.0	520.0
---	-----	-------	-------	-------	-------

UNAUTHORIZED NUMBER OVER (BELOW) CAP

Unauthorized Number over (Below) Cap	(418.5)	0.0	0.0	0.0	0.0
--------------------------------------	---------	-----	-----	-----	-----

<b>TOTAL, ADJUSTED FTES</b>	<b>397.0</b>	<b>520.0</b>	<b>520.0</b>	<b>520.0</b>	<b>520.0</b>
-----------------------------	--------------	--------------	--------------	--------------	--------------

**NUMBER OF 100% FEDERALLY FUNDED FTES**

2.C. Summary of Base Request by Object of Expense

10/15/2014 4:09:25PM

84th Regular Session, Agency Submission, Version 1  
Automated Budget and Evaluation System of Texas (ABEST)

761 Texas A&M International University

OBJECT OF EXPENSE	Exp 2013	Est 2014	Bud 2015	BL 2016	BL 2017
1001 SALARIES AND WAGES	\$9,406,016	\$8,467,212	\$8,265,436	\$561,527	\$561,527
1002 OTHER PERSONNEL COSTS	\$272,516	\$242,392	\$210,757	\$199	\$199
1005 FACULTY SALARIES	\$15,212,029	\$16,476,832	\$16,881,570	\$8,267,741	\$8,267,741
2001 PROFESSIONAL FEES AND SERVICES	\$108,480	\$61,048	\$29,640	\$30,000	\$30,000
2003 CONSUMABLE SUPPLIES	\$132,719	\$88,656	\$29,698	\$25,000	\$25,000
2004 UTILITIES	\$1,167,626	\$1,057,192	\$1,018,002	\$0	\$0
2005 TRAVEL	\$22,609	\$5,476	\$8,692	\$10,000	\$10,000
2007 RENT - MACHINE AND OTHER	\$35,718	\$0	\$0	\$0	\$0
2008 DEBT SERVICE	\$8,442,909	\$8,406,072	\$7,795,114	\$6,636,348	\$6,650,315
2009 OTHER OPERATING EXPENSE	\$1,145,163	\$2,058,790	\$2,207,943	\$871,391	\$871,391
3001 CLIENT SERVICES	\$1,125,120	\$1,123,421	\$1,134,291	\$1,135,000	\$1,135,000
5000 CAPITAL EXPENDITURES	\$15,303	\$0	\$0	\$0	\$0
<b>OOE Total (Excluding Riders)</b>	<b>\$37,086,208</b>	<b>\$37,987,091</b>	<b>\$37,581,143</b>	<b>\$17,537,206</b>	<b>\$17,551,173</b>
<b>OOE Total (Riders)</b>					
<b>Grand Total</b>	<b>\$37,086,208</b>	<b>\$37,987,091</b>	<b>\$37,581,143</b>	<b>\$17,537,206</b>	<b>\$17,551,173</b>

**2.D. Summary of Base Request Objective Outcomes**  
 84th Regular Session, Agency Submission, Version 1  
 Automated Budget and Evaluation system of Texas (ABEST)

10/15/2014 4:09:26PM

**761 Texas A&M International University**

Goal/ Objective / Outcome	Exp 2013	Est 2014	Bud 2015	BL 2016	BL 2017
1 Provide Instructional and Operations Support					
1 Provide Instructional and Operations Support					
<b>KEY</b> 1 % 1st-time, Full-time, Degree-seeking Frsh Earn Degree in 6 Yrs	43.50%	40.50%	42.00%	42.00%	44.00%
2 % 1st-time, Full-time, Degree-seeking White Frsh Earn Degree in 6 Yrs	19.05%	18.75%	10.00%	10.00%	20.00%
3 % 1st-time, Full-time, Degree-seeking Hisp Frsh Earn Degree in 6 Yrs	43.50%	41.00%	42.00%	43.00%	43.00%
4 % 1st-time, Full-time, Degree-seeking Black Frsh Earn Degree in 6 Yrs	42.90%	0.00%	25.00%	25.00%	25.00%
5 % 1st-time, Full-time, Degree-seeking Other Frshmn Earn Deg in 6 Yrs	50.00%	75.00%	75.00%	75.00%	75.00%
<b>KEY</b> 6 % 1st-time, Full-time, Degree-seeking Frsh Earn Degree in 4 Yrs	18.11%	18.00%	19.00%	18.00%	20.00%
7 % 1st-time, Full-time, Degree-seeking White Frsh Earn Degree in 4 Yrs	11.11%	12.50%	12.00%	15.00%	15.00%
8 % 1st-time, Full-time, Degree-seeking Hisp Frsh Earn Degree in 4 Yrs	18.08%	17.80%	18.00%	18.00%	19.00%
9 % 1st-time, Full-time, Degree-seeking Black Frsh Earn Degree in 4 Yrs	33.33%	0.00%	25.00%	25.00%	25.00%
10 % 1st-time, Full-time, Degree-seeking Other Frsh Earn Degree in 4 Yrs	0.00%	75.00%	25.00%	25.00%	25.00%
<b>KEY</b> 11 Persistence Rate - 1st-time, Full-time, Degree-seeking Frsh after 1 Yr	74.20%	75.00%	75.00%	76.00%	76.00%
12 Persistence 1st-time, Full-time, Degree-seeking White Frsh after 1 Yr	87.50%	85.00%	85.00%	85.00%	85.00%

**2.D. Summary of Base Request Objective Outcomes**  
 84th Regular Session, Agency Submission, Version 1  
 Automated Budget and Evaluation system of Texas (ABEST)

10/15/2014 4:09:26PM

**761 Texas A&M International University**

<i>Goal/ Objective / Outcome</i>	<b>Exp 2013</b>	<b>Est 2014</b>	<b>Bud 2015</b>	<b>BL 2016</b>	<b>BL 2017</b>
<b>13 Persistence 1st-time, Full-time, Degree-seeking Hisp Frsh after 1 Yr</b>	73.80%	75.00%	75.00%	78.00%	78.00%
<b>14 Persistence 1st-time, Full-time, Degree-seeking Black Frsh after 1 Yr</b>	50.00%	50.00%	50.00%	50.00%	50.00%
<b>15 Persistence 1st-time, Full-time, Degree-seeking Other Frsh after 1 Yr</b>	86.36%	85.00%	85.00%	85.00%	85.00%
<b>16 Percent of Semester Credit Hours Completed</b>	94.60%	95.00%	95.00%	95.00%	95.00%
<b>KEY 17 Certification Rate of Teacher Education Graduates</b>	34.40%	90.00%	90.00%	90.00%	90.00%
<b>18 Percentage of Underprepared Students Satisfy TSI Obligation in Math</b>	74.00%	70.00%	73.00%	73.00%	73.00%
<b>19 Percentage of Underprepared Students Satisfy TSI Obligation in Writing</b>	89.00%	88.00%	90.00%	90.00%	90.00%
<b>20 Percentage of Underprepared Students Satisfy TSI Obligation in Reading</b>	91.00%	95.00%	95.00%	95.00%	95.00%
<b>KEY 21 % of Baccalaureate Graduates Who Are 1st Generation College Graduates</b>	50.10%	49.00%	50.00%	50.00%	50.00%
<b>KEY 22 % Incoming FT Degree-seeking Undergrad Transfer Students Grad 4 Years</b>	64.50%	65.00%	68.00%	68.00%	70.00%
<b>KEY 23 % Incoming FT Degree-seeking Undergrad Transfer Students Grad 2 Years</b>	19.00%	19.00%	19.00%	20.00%	20.00%
<b>KEY 24 % Lower Division Semester Credit Hours Taught by Tenured/Tenure-Track</b>	36.50%	35.00%	36.00%	36.00%	38.00%
<b>KEY 27 State Licensure Pass Rate of Nursing Graduates</b>	78.46%	85.00%	90.00%	90.00%	90.00%

**2.D. Summary of Base Request Objective Outcomes**  
 84th Regular Session, Agency Submission, Version 1  
 Automated Budget and Evaluation system of Texas (ABEST)

10/15/2014 4:09:26PM

**761 Texas A&M International University**

<i>Goal/ Objective / Outcome</i>	<b>Exp 2013</b>	<b>Est 2014</b>	<b>Bud 2015</b>	<b>BL 2016</b>	<b>BL 2017</b>
<b>KEY 30 Dollar Value of External or Sponsored Research Funds (in Millions)</b>	3.20	3.40	3.30	3.30	3.30
<b>31 External or Sponsored Research Funds As a % of State Appropriations</b>	4.00%	4.25%	4.25%	4.30%	4.40%
<b>32 External Research Funds As Percentage Appropriated for Research</b>	4.50%	4.60%	4.60%	4.60%	4.70%
<b>48 % Endowed Professorships/ Chairs Unfilled All/ Part of Fiscal Year</b>	25.00%	0.00%	0.00%	0.00%	0.00%
<b>49 Average No Months Endowed Chairs Remain Vacant</b>	1.00	0.00	0.00	0.00	0.00

**2.E. Summary of Exceptional Items Request**  
 84th Regular Session, Agency Submission, Version 1  
 Automated Budget and Evaluation System of Texas (ABEST)

DATE: 10/15/2014  
 TIME : 4:09:26PM

Agency code: 761

Agency name: Texas A&M International University

Priority	Item	2016			2017			Biennium	
		GR and GR/GR Dedicated	All Funds	FTEs	GR and GR Dedicated	All Funds	FTEs	GR and GR Dedicated	All Funds
1	Renovation of Library	\$5,414,161	\$5,414,161		\$5,414,161	\$5,414,161		\$10,828,322	\$10,828,322
2	Petroleum Engineering Initiative	\$3,000,000	\$3,000,000	4.0	\$3,000,000	\$3,000,000	4.0	\$6,000,000	\$6,000,000
3	Texas Academy of International	\$1,000,000	\$1,000,000	3.0	\$1,000,000	\$1,000,000	3.0	\$2,000,000	\$2,000,000
4	Small Business Development Center	\$18,150	\$18,150		\$18,150	\$18,150		\$36,300	\$36,300
5	Repurposing of Kinesiology Building	\$5,754,181	\$5,754,181		\$5,754,181	\$5,754,181		\$11,508,362	\$11,508,362
<b>Total, Exceptional Items Request</b>		<b>\$15,186,492</b>	<b>\$15,186,492</b>	<b>7.0</b>	<b>\$15,186,492</b>	<b>\$15,186,492</b>	<b>7.0</b>	<b>\$30,372,984</b>	<b>\$30,372,984</b>

**Method of Financing**

General Revenue	\$15,186,492	\$15,186,492		\$15,186,492	\$15,186,492		\$30,372,984	\$30,372,984
General Revenue - Dedicated								
Federal Funds								
Other Funds								
	<b>\$15,186,492</b>	<b>\$15,186,492</b>		<b>\$15,186,492</b>	<b>\$15,186,492</b>		<b>\$30,372,984</b>	<b>\$30,372,984</b>

**Full Time Equivalent Positions**

7.0

7.0

**Number of 100% Federally Funded FTEs**



**2.F. Summary of Total Request by Strategy**  
 84th Regular Session, Agency Submission, Version 1  
 Automated Budget and Evaluation System of Texas (ABEST)

DATE : 10/15/2014

TIME : 4:09:27PM

Agency code: 761 Agency name: Texas A&M International University

<b>Goal/Objective/STRATEGY</b>	<b>Base 2016</b>	<b>Base 2017</b>	<b>Exceptional 2016</b>	<b>Exceptional 2017</b>	<b>Total Request 2016</b>	<b>Total Request 2017</b>
<b>1</b> Provide Instructional and Operations Support						
<i>1 Provide Instructional and Operations Support</i>						
<b>1</b> OPERATIONS SUPPORT	\$0	\$0	\$0	\$0	\$0	\$0
<b>3</b> STAFF GROUP INSURANCE PREMIUMS	845,000	845,000	0	0	845,000	845,000
<b>4</b> WORKERS' COMPENSATION INSURANCE	26,391	26,391	0	0	26,391	26,391
<b>5</b> UNEMPLOYMENT COMPENSATION INSURANCE	199	199	0	0	199	199
<b>6</b> TEXAS PUBLIC EDUCATION GRANTS	1,135,000	1,135,000	0	0	1,135,000	1,135,000
<b>TOTAL, GOAL 1</b>	<b>\$2,006,590</b>	<b>\$2,006,590</b>	<b>\$0</b>	<b>\$0</b>	<b>\$2,006,590</b>	<b>\$2,006,590</b>
<b>2</b> Provide Infrastructure Support						
<i>1 Provide Operation and Maintenance of E&amp;G Space</i>						
<b>1</b> E&G SPACE SUPPORT	0	0	0	0	0	0
<b>2</b> TUITION REVENUE BOND RETIREMENT	6,636,348	6,650,315	11,168,342	11,168,342	17,804,690	17,818,657
<b>5</b> SMALL INSTITUTION SUPPLEMENT	0	0	0	0	0	0
<b>TOTAL, GOAL 2</b>	<b>\$6,636,348</b>	<b>\$6,650,315</b>	<b>\$11,168,342</b>	<b>\$11,168,342</b>	<b>\$17,804,690</b>	<b>\$17,818,657</b>

**2.F. Summary of Total Request by Strategy**  
 84th Regular Session, Agency Submission, Version 1  
 Automated Budget and Evaluation System of Texas (ABEST)

DATE : 10/15/2014  
 TIME : 4:09:27PM

Agency code: 761 Agency name: Texas A&M International University

<b>Goal/Objective/STRATEGY</b>	<b>Base 2016</b>	<b>Base 2017</b>	<b>Exceptional 2016</b>	<b>Exceptional 2017</b>	<b>Total Request 2016</b>	<b>Total Request 2017</b>
<b>3</b> Provide Special Item Support						
<b>1</b> <i>Instructional Support Special Item Support</i>						
<b>1</b> PHD PROGRAM IN BUSINESS	\$0	\$0	\$0	\$0	\$0	\$0
<b>2</b> FACULTY ENHANCEMENT	0	0	0	0	0	0
<b>3</b> ACADEMIC AND STUDENT SUPPORT	1,841,015	1,841,015	0	0	1,841,015	1,841,015
<b>3</b> <i>Public Service Special Item Support</i>						
<b>1</b> INSTITUTE FOR INTERNATIONAL TRADE	195,027	195,027	0	0	195,027	195,027
<b>2</b> SMALL BUSINESS DEVELOPMENT CENTER	181,500	181,500	0	0	181,500	181,500
<b>4</b> <i>Institutional Support Special Item Support</i>						
<b>1</b> INSTITUTIONAL ENHANCEMENT	5,926,726	5,926,726	0	0	5,926,726	5,926,726
<b>3</b> OUTREACH AND ENROLLMENT	750,000	750,000	0	0	750,000	750,000
<b>5</b> <i>Exceptional Item Request</i>						
<b>1</b> EXCEPTIONAL ITEM REQUEST	0	0	4,018,150	4,018,150	4,018,150	4,018,150
<b>TOTAL, GOAL 3</b>	<b>\$8,894,268</b>	<b>\$8,894,268</b>	<b>\$4,018,150</b>	<b>\$4,018,150</b>	<b>\$12,912,418</b>	<b>\$12,912,418</b>

**2.F. Summary of Total Request by Strategy**  
 84th Regular Session, Agency Submission, Version 1  
 Automated Budget and Evaluation System of Texas (ABEST)

DATE : 10/15/2014

TIME : 4:09:27PM

Agency code: 761 Agency name: Texas A&M International University

<b>Goal/Objective/STRATEGY</b>	<b>Base 2016</b>	<b>Base 2017</b>	<b>Exceptional 2016</b>	<b>Exceptional 2017</b>	<b>Total Request 2016</b>	<b>Total Request 2017</b>
<b>6</b> Research Funds						
1 <i>Research Funds</i>						
1 RESEARCH DEVELOPMENT FUND	\$0	\$0	\$0	\$0	\$0	\$0
<b>TOTAL, GOAL 6</b>	<b>\$0</b>	<b>\$0</b>	<b>\$0</b>	<b>\$0</b>	<b>\$0</b>	<b>\$0</b>
<b>TOTAL, AGENCY STRATEGY REQUEST</b>	<b>\$17,537,206</b>	<b>\$17,551,173</b>	<b>\$15,186,492</b>	<b>\$15,186,492</b>	<b>\$32,723,698</b>	<b>\$32,737,665</b>
<b>TOTAL, AGENCY RIDER APPROPRIATIONS REQUEST</b>						
<b>GRAND TOTAL, AGENCY REQUEST</b>	<b>\$17,537,206</b>	<b>\$17,551,173</b>	<b>\$15,186,492</b>	<b>\$15,186,492</b>	<b>\$32,723,698</b>	<b>\$32,737,665</b>

**2.F. Summary of Total Request by Strategy**  
 84th Regular Session, Agency Submission, Version 1  
 Automated Budget and Evaluation System of Texas (ABEST)

DATE : 10/15/2014

TIME : 4:09:27PM

Agency code: 761 Agency name: Texas A&M International University

<b>Goal/Objective/STRATEGY</b>	<b>Base 2016</b>	<b>Base 2017</b>	<b>Exceptional 2016</b>	<b>Exceptional 2017</b>	<b>Total Request 2016</b>	<b>Total Request 2017</b>
<b>General Revenue Funds:</b>						
1 General Revenue Fund	\$15,419,319	\$15,433,286	\$15,186,492	\$15,186,492	\$30,605,811	\$30,619,778
	<b>\$15,419,319</b>	<b>\$15,433,286</b>	<b>\$15,186,492</b>	<b>\$15,186,492</b>	<b>\$30,605,811</b>	<b>\$30,619,778</b>
<b>General Revenue Dedicated Funds:</b>						
704 Bd Authorized Tuition Inc	0	0	0	0	0	0
770 Est Oth Educ & Gen Inco	1,980,000	1,980,000	0	0	1,980,000	1,980,000
	<b>\$1,980,000</b>	<b>\$1,980,000</b>	<b>\$0</b>	<b>\$0</b>	<b>\$1,980,000</b>	<b>\$1,980,000</b>
<b>Other Funds:</b>						
777 Interagency Contracts	137,887	137,887	0	0	137,887	137,887
	<b>\$137,887</b>	<b>\$137,887</b>	<b>\$0</b>	<b>\$0</b>	<b>\$137,887</b>	<b>\$137,887</b>
<b>TOTAL, METHOD OF FINANCING</b>	<b>\$17,537,206</b>	<b>\$17,551,173</b>	<b>\$15,186,492</b>	<b>\$15,186,492</b>	<b>\$32,723,698</b>	<b>\$32,737,665</b>
<b>FULL TIME EQUIVALENT POSITIONS</b>	<b>520.0</b>	<b>520.0</b>	<b>7.0</b>	<b>7.0</b>	<b>527.0</b>	<b>527.0</b>

**2.G. Summary of Total Request Objective Outcomes**  
 84th Regular Session, Agency Submission, Version 1  
 Automated Budget and Evaluation system of Texas (ABEST)

Date : 10/15/2014

Time: 4:09:28PM

Agency code: **761** Agency name: **Texas A&M International University**

Goal/ Objective / Outcome

	<b>BL 2016</b>	<b>BL 2017</b>	<b>Excp 2016</b>	<b>Excp 2017</b>	<b>Total Request 2016</b>	<b>Total Request 2017</b>
1 Provide Instructional and Operations Support						
1 <i>Provide Instructional and Operations Support</i>						
<b>KEY 1 % 1st-time, Full-time, Degree-seeking Frsh Earn Degree in 6 Yrs</b>						
	42.00%	44.00%			42.00%	44.00%
<b>2 % 1st-time, Full-time, Degree-seeking White Frsh Earn Degree in 6 Yrs</b>						
	10.00%	20.00%			10.00%	20.00%
<b>3 % 1st-time, Full-time, Degree-seeking Hisp Frsh Earn Degree in 6 Yrs</b>						
	43.00%	43.00%			43.00%	43.00%
<b>4 % 1st-time, Full-time, Degree-seeking Black Frsh Earn Degree in 6 Yrs</b>						
	25.00%	25.00%			25.00%	25.00%
<b>5 % 1st-time, Full-time, Degree-seeking Other Frshmn Earn Deg in 6 Yrs</b>						
	75.00%	75.00%			75.00%	75.00%
<b>KEY 6 % 1st-time, Full-time, Degree-seeking Frsh Earn Degree in 4 Yrs</b>						
	18.00%	20.00%			18.00%	20.00%
<b>7 % 1st-time, Full-time, Degree-seeking White Frsh Earn Degree in 4 Yrs</b>						
	15.00%	15.00%			15.00%	15.00%
<b>8 % 1st-time, Full-time, Degree-seeking Hisp Frsh Earn Degree in 4 Yrs</b>						
	18.00%	19.00%			18.00%	19.00%

**2.G. Summary of Total Request Objective Outcomes**  
 84th Regular Session, Agency Submission, Version 1  
 Automated Budget and Evaluation system of Texas (ABEST)

Date : 10/15/2014  
 Time: 4:09:28PM

Agency code: **761** Agency name: **Texas A&M International University**

Goal/ Objective / Outcome

	<b>BL 2016</b>	<b>BL 2017</b>	<b>Excp 2016</b>	<b>Excp 2017</b>	<b>Total Request 2016</b>	<b>Total Request 2017</b>
<b>9 % 1st-time, Full-time, Degree-seeking Black Frsh Earn Degree in 4 Yrs</b>	25.00%	25.00%			25.00%	25.00%
<b>10 % 1st-time, Full-time, Degree-seeking Other Frsh Earn Degree in 4 Yrs</b>	25.00%	25.00%			25.00%	25.00%
<b>KEY 11 Persistence Rate - 1st-time, Full-time, Degree-seeking Frsh after 1 Yr</b>	76.00%	76.00%			76.00%	76.00%
<b>12 Persistence 1st-time, Full-time, Degree-seeking White Frsh after 1 Yr</b>	85.00%	85.00%			85.00%	85.00%
<b>13 Persistence 1st-time, Full-time, Degree-seeking Hisp Frsh after 1 Yr</b>	78.00%	78.00%			78.00%	78.00%
<b>14 Persistence 1st-time, Full-time, Degree-seeking Black Frsh after 1 Yr</b>	50.00%	50.00%			50.00%	50.00%
<b>15 Persistence 1st-time, Full-time, Degree-seeking Other Frsh after 1 Yr</b>	85.00%	85.00%			85.00%	85.00%
<b>16 Percent of Semester Credit Hours Completed</b>	95.00%	95.00%			95.00%	95.00%
<b>KEY 17 Certification Rate of Teacher Education Graduates</b>	90.00%	90.00%			90.00%	90.00%

**2.G. Summary of Total Request Objective Outcomes**  
 84th Regular Session, Agency Submission, Version 1  
 Automated Budget and Evaluation system of Texas (ABEST)

Date : 10/15/2014

Time: 4:09:28PM

Agency code: 761

Agency name: Texas A&M International University

Goal/ Objective / Outcome

	BL 2016	BL 2017	Excp 2016	Excp 2017	Total Request 2016	Total Request 2017
<b>18 Percentage of Underprepared Students Satisfy TSI Obligation in Math</b>	73.00%	73.00%			73.00%	73.00%
<b>19 Percentage of Underprepared Students Satisfy TSI Obligation in Writing</b>	90.00%	90.00%			90.00%	90.00%
<b>20 Percentage of Underprepared Students Satisfy TSI Obligation in Reading</b>	95.00%	95.00%			95.00%	95.00%
<b>KEY 21 % of Baccalaureate Graduates Who Are 1st Generation College Graduates</b>	50.00%	50.00%			50.00%	50.00%
<b>KEY 22 % Incoming FT Degree-seeking Undergrad Transfer Students Grad 4 Years</b>	68.00%	70.00%			68.00%	70.00%
<b>KEY 23 % Incoming FT Degree-seeking Undergrad Transfer Students Grad 2 Years</b>	20.00%	20.00%			20.00%	20.00%
<b>KEY 24 % Lower Division Semester Credit Hours Taught by Tenured/Tenure-Track</b>	36.00%	38.00%			36.00%	38.00%
<b>KEY 27 State Licensure Pass Rate of Nursing Graduates</b>	90.00%	90.00%			90.00%	90.00%
<b>KEY 30 Dollar Value of External or Sponsored Research Funds (in Millions)</b>	3.30	3.30			3.30	3.30

**2.G. Summary of Total Request Objective Outcomes**  
 84th Regular Session, Agency Submission, Version 1  
 Automated Budget and Evaluation system of Texas (ABEST)

Date : 10/15/2014

Time: 4:09:28PM

Agency code: 761

Agency name: Texas A&M International University

Goal/ Objective / Outcome

	<b>BL 2016</b>	<b>BL 2017</b>	<b>Excp 2016</b>	<b>Excp 2017</b>	<b>Total Request 2016</b>	<b>Total Request 2017</b>
<b>31 External or Sponsored Research Funds As a % of State Appropriations</b>	4.30%	4.40%			4.30%	4.40%
<b>32 External Research Funds As Percentage Appropriated for Research</b>	4.60%	4.70%			4.60%	4.70%
<b>48 % Endowed Professorships/ Chairs Unfilled All/ Part of Fiscal Year</b>	0.00%	0.00%			0.00%	0.00%
<b>49 Average No Months Endowed Chairs Remain Vacant</b>	0.00	0.00			0.00	0.00



**761 Texas A&M International University**

GOAL: 1 Provide Instructional and Operations Support  
 OBJECTIVE: 1 Provide Instructional and Operations Support  
 STRATEGY: 1 Operations Support

Statewide Goal/Benchmark: 2 0  
 Service Categories:  
 Service: 19 Income: A.2 Age: B.3

CODE	DESCRIPTION	Exp 2013	Est 2014	Bud 2015	BL 2016 <sup>(1)</sup>	BL 2017 <sup>(1)</sup>
<b>Output Measures:</b>						
1	Number of Undergraduate Degrees Awarded	836.00	964.00	983.00	1,005.00	1,025.00
2	Number of Minority Graduates	929.00	1,100.00	1,120.00	1,146.00	1,169.00
3	Number of Underprepared Students Who Satisfy TSI Obligation in Math	73.00	53.00	87.00	85.00	95.00
4	Number of Underprepared Students Who Satisfy TSI Obligation in Writing	70.00	49.00	65.00	65.00	65.00
5	Number of Underprepared Students Who Satisfy TSI Obligation in Reading	52.00	33.00	65.00	65.00	65.00
6	Number of Two-Year College Transfers Who Graduate	341.00	346.00	352.00	360.00	370.00
<b>Efficiency Measures:</b>						
KEY 1	Administrative Cost As a Percent of Operating Budget	7.22 %	7.30 %	7.40 %	7.40 %	7.40 %
<b>Explanatory/Input Measures:</b>						
1	Student/Faculty Ratio	1.21	1.22	1.21	1.20	1.20
2	Number of Minority Students Enrolled	6,975.00	7,087.00	7,720.00	7,370.00	7,520.00
3	Number of Community College Transfers Enrolled	1,603.00	1,628.00	1,652.00	1,675.00	1,702.00
4	Number of Semester Credit Hours Completed	69,981.00	71,100.00	72,230.00	73,310.00	74,400.00
5	Number of Semester Credit Hours	74,002.00	75,200.00	76,400.00	77,620.00	78,860.00

(1) - Formula funded strategies are not requested in 2016-17 because amounts are not determined by institutions.

**761 Texas A&M International University**

GOAL: 1 Provide Instructional and Operations Support  
 OBJECTIVE: 1 Provide Instructional and Operations Support  
 STRATEGY: 1 Operations Support

Statewide Goal/Benchmark: 2 0  
 Service Categories:  
 Service: 19 Income: A.2 Age: B.3

CODE	DESCRIPTION	Exp 2013	Est 2014	Bud 2015	BL 2016 <sup>(1)</sup>	BL 2017 <sup>(1)</sup>
6	Number of Students Enrolled as of the Twelfth Class Day	7,431.00	7,550.00	7,701.00	7,855.00	8,012.00
<b>Objects of Expense:</b>						
1001	SALARIES AND WAGES	\$6,432,809	\$6,055,417	\$6,120,133	\$0	\$0
1002	OTHER PERSONNEL COSTS	\$141,740	\$162,729	\$148,888	\$0	\$0
1005	FACULTY SALARIES	\$7,874,942	\$8,084,912	\$8,203,325	\$0	\$0
2001	PROFESSIONAL FEES AND SERVICES	\$60,000	\$0	\$0	\$0	\$0
2003	CONSUMABLE SUPPLIES	\$128,877	\$87,090	\$0	\$0	\$0
2005	TRAVEL	\$14,050	\$0	\$0	\$0	\$0
2007	RENT - MACHINE AND OTHER	\$35,718	\$0	\$0	\$0	\$0
2009	OTHER OPERATING EXPENSE	\$198,601	\$132,697	\$71,983	\$0	\$0
5000	CAPITAL EXPENDITURES	\$6,445	\$0	\$0	\$0	\$0
<b>TOTAL, OBJECT OF EXPENSE</b>		<b>\$14,893,182</b>	<b>\$14,522,845</b>	<b>\$14,544,329</b>	<b>\$0</b>	<b>\$0</b>
<b>Method of Financing:</b>						
1	General Revenue Fund	\$9,856,755	\$9,592,705	\$9,592,021	\$0	\$0
<b>SUBTOTAL, MOF (GENERAL REVENUE FUNDS)</b>		<b>\$9,856,755</b>	<b>\$9,592,705</b>	<b>\$9,592,021</b>	<b>\$0</b>	<b>\$0</b>

**Method of Financing:**

(1) - Formula funded strategies are not requested in 2016-17 because amounts are not determined by institutions.

**761 Texas A&M International University**

GOAL: 1 Provide Instructional and Operations Support Statewide Goal/Benchmark: 2 0  
 OBJECTIVE: 1 Provide Instructional and Operations Support Service Categories:  
 STRATEGY: 1 Operations Support Service: 19 Income: A.2 Age: B.3

CODE	DESCRIPTION	Exp 2013	Est 2014	Bud 2015	BL 2016 <sup>(1)</sup>	BL 2017 <sup>(1)</sup>
704	Bd Authorized Tuition Inc	\$323,642	\$339,713	\$346,629	\$0	\$0
770	Est Oth Educ & Gen Inco	\$4,712,785	\$4,590,427	\$4,605,679	\$0	\$0
<b>SUBTOTAL, MOF (GENERAL REVENUE FUNDS - DEDICATED)</b>		<b>\$5,036,427</b>	<b>\$4,930,140</b>	<b>\$4,952,308</b>	<b>\$0</b>	<b>\$0</b>
<b>TOTAL, METHOD OF FINANCE (INCLUDING RIDERS)</b>					<b>\$0</b>	<b>\$0</b>
<b>TOTAL, METHOD OF FINANCE (EXCLUDING RIDERS)</b>		<b>\$14,893,182</b>	<b>\$14,522,845</b>	<b>\$14,544,329</b>	<b>\$0</b>	<b>\$0</b>
<b>FULL TIME EQUIVALENT POSITIONS:</b>		<b>217.2</b>	<b>318.9</b>	<b>321.5</b>	<b>324.5</b>	<b>324.5</b>

**STRATEGY DESCRIPTION AND JUSTIFICATION:**

The Instruction and Operations Formula provides funding for faculty salaries, departmental operating expense, library, instructional administration, research enhancement, student services and institutional support.

The funds are distributed on a weighted semester credit hour basis. The rate per weighted semester credit hour is established by the Legislature each biennium.

**EXTERNAL/INTERNAL FACTORS IMPACTING STRATEGY:**

(1) - Formula funded strategies are not requested in 2016-17 because amounts are not determined by institutions.

**761 Texas A&M International University**

GOAL:	1	Provide Instructional and Operations Support	Statewide Goal/Benchmark:	2	0
OBJECTIVE:	1	Provide Instructional and Operations Support	Service Categories:		
STRATEGY:	3	Staff Group Insurance Premiums	Service: 06	Income: A.2	Age: B.3

CODE	DESCRIPTION	Exp 2013	Est 2014	Bud 2015	BL 2016	BL 2017
<b>Objects of Expense:</b>						
2009	OTHER OPERATING EXPENSE	\$548,280	\$706,859	\$874,828	\$845,000	\$845,000
<b>TOTAL, OBJECT OF EXPENSE</b>		<b>\$548,280</b>	<b>\$706,859</b>	<b>\$874,828</b>	<b>\$845,000</b>	<b>\$845,000</b>
<b>Method of Financing:</b>						
770	Est Oth Educ & Gen Inco	\$548,280	\$706,859	\$874,828	\$845,000	\$845,000
<b>SUBTOTAL, MOF (GENERAL REVENUE FUNDS - DEDICATED)</b>		<b>\$548,280</b>	<b>\$706,859</b>	<b>\$874,828</b>	<b>\$845,000</b>	<b>\$845,000</b>
<b>TOTAL, METHOD OF FINANCE (INCLUDING RIDERS)</b>					<b>\$845,000</b>	<b>\$845,000</b>
<b>TOTAL, METHOD OF FINANCE (EXCLUDING RIDERS)</b>		<b>\$548,280</b>	<b>\$706,859</b>	<b>\$874,828</b>	<b>\$845,000</b>	<b>\$845,000</b>

**FULL TIME EQUIVALENT POSITIONS:**

**STRATEGY DESCRIPTION AND JUSTIFICATION:**

This strategy is to provide proportional share of staff group insurance premiums paid from Other Educational and General funds.

**EXTERNAL/INTERNAL FACTORS IMPACTING STRATEGY:**

**761 Texas A&M International University**

GOAL:	1	Provide Instructional and Operations Support	Statewide Goal/Benchmark:	2	0
OBJECTIVE:	1	Provide Instructional and Operations Support	Service Categories:		
STRATEGY:	4	Workers' Compensation Insurance	Service: 06	Income: A.2	Age: B.3

CODE	DESCRIPTION	Exp 2013	Est 2014	Bud 2015	BL 2016	BL 2017
<b>Objects of Expense:</b>						
2009	OTHER OPERATING EXPENSE	\$35,919	\$41,336	\$26,391	\$26,391	\$26,391
<b>TOTAL, OBJECT OF EXPENSE</b>		<b>\$35,919</b>	<b>\$41,336</b>	<b>\$26,391</b>	<b>\$26,391</b>	<b>\$26,391</b>
<b>Method of Financing:</b>						
1	General Revenue Fund	\$26,390	\$26,391	\$26,391	\$26,391	\$26,391
<b>SUBTOTAL, MOF (GENERAL REVENUE FUNDS)</b>		<b>\$26,390</b>	<b>\$26,391</b>	<b>\$26,391</b>	<b>\$26,391</b>	<b>\$26,391</b>
<b>Method of Financing:</b>						
770	Est Oth Educ & Gen Inco	\$9,529	\$14,945	\$0	\$0	\$0
<b>SUBTOTAL, MOF (GENERAL REVENUE FUNDS - DEDICATED)</b>		<b>\$9,529</b>	<b>\$14,945</b>	<b>\$0</b>	<b>\$0</b>	<b>\$0</b>
<b>TOTAL, METHOD OF FINANCE (INCLUDING RIDERS)</b>					<b>\$26,391</b>	<b>\$26,391</b>
<b>TOTAL, METHOD OF FINANCE (EXCLUDING RIDERS)</b>		<b>\$35,919</b>	<b>\$41,336</b>	<b>\$26,391</b>	<b>\$26,391</b>	<b>\$26,391</b>
<b>FULL TIME EQUIVALENT POSITIONS:</b>						

**761 Texas A&M International University**

GOAL:	1	Provide Instructional and Operations Support	Statewide Goal/Benchmark:	2	0
OBJECTIVE:	1	Provide Instructional and Operations Support	Service Categories:		
STRATEGY:	4	Workers' Compensation Insurance	Service: 06	Income: A.2	Age: B.3

<b>CODE</b>	<b>DESCRIPTION</b>	<b>Exp 2013</b>	<b>Est 2014</b>	<b>Bud 2015</b>	<b>BL 2016</b>	<b>BL 2017</b>
-------------	--------------------	-----------------	-----------------	-----------------	----------------	----------------

**STRATEGY DESCRIPTION AND JUSTIFICATION:**

The strategy funds the Worker's Compensation payments related to Educational and General funds.

**EXTERNAL/INTERNAL FACTORS IMPACTING STRATEGY:**

**761 Texas A&M International University**

GOAL:	1	Provide Instructional and Operations Support	Statewide Goal/Benchmark:	2	0
OBJECTIVE:	1	Provide Instructional and Operations Support	Service Categories:		
STRATEGY:	5	Unemployment Compensation Insurance	Service: 06	Income: A.2	Age: B.3

CODE	DESCRIPTION	Exp 2013	Est 2014	Bud 2015	BL 2016	BL 2017
<b>Objects of Expense:</b>						
1002	OTHER PERSONNEL COSTS	\$6,929	\$17,595	\$199	\$199	\$199
<b>TOTAL, OBJECT OF EXPENSE</b>		<b>\$6,929</b>	<b>\$17,595</b>	<b>\$199</b>	<b>\$199</b>	<b>\$199</b>
<b>Method of Financing:</b>						
1	General Revenue Fund	\$199	\$199	\$199	\$199	\$199
<b>SUBTOTAL, MOF (GENERAL REVENUE FUNDS)</b>		<b>\$199</b>	<b>\$199</b>	<b>\$199</b>	<b>\$199</b>	<b>\$199</b>
<b>Method of Financing:</b>						
770	Est Oth Educ & Gen Inco	\$6,730	\$17,396	\$0	\$0	\$0
<b>SUBTOTAL, MOF (GENERAL REVENUE FUNDS - DEDICATED)</b>		<b>\$6,730</b>	<b>\$17,396</b>	<b>\$0</b>	<b>\$0</b>	<b>\$0</b>
<b>TOTAL, METHOD OF FINANCE (INCLUDING RIDERS)</b>					<b>\$199</b>	<b>\$199</b>
<b>TOTAL, METHOD OF FINANCE (EXCLUDING RIDERS)</b>		<b>\$6,929</b>	<b>\$17,595</b>	<b>\$199</b>	<b>\$199</b>	<b>\$199</b>
<b>FULL TIME EQUIVALENT POSITIONS:</b>						

**761 Texas A&M International University**

GOAL:	1	Provide Instructional and Operations Support	Statewide Goal/Benchmark:	2	0
OBJECTIVE:	1	Provide Instructional and Operations Support	Service Categories:		
STRATEGY:	5	Unemployment Compensation Insurance	Service: 06	Income: A.2	Age: B.3

CODE	DESCRIPTION	Exp 2013	Est 2014	Bud 2015	BL 2016	BL 2017
------	-------------	----------	----------	----------	---------	---------

**STRATEGY DESCRIPTION AND JUSTIFICATION:**

To provide funds for the statutorily mandated unemployment compensation insurance program (Article 8309b, V.A.C.S.). This program provides income continuation for regular employees impacted by reductions in force. The program is part of a total compensation and benefit package that is designed to assist in attracting and retaining quality employees.

**EXTERNAL/INTERNAL FACTORS IMPACTING STRATEGY:**



**761 Texas A&M International University**

GOAL:	1	Provide Instructional and Operations Support	Statewide Goal/Benchmark:	2	0
OBJECTIVE:	1	Provide Instructional and Operations Support	Service Categories:		
STRATEGY:	6	Texas Public Education Grants	Service: 20	Income: A.2	Age: B.3

CODE	DESCRIPTION	Exp 2013	Est 2014	Bud 2015	BL 2016	BL 2017
<b>Objects of Expense:</b>						
3001	CLIENT SERVICES	\$1,090,359	\$1,123,421	\$1,134,291	\$1,135,000	\$1,135,000
<b>TOTAL, OBJECT OF EXPENSE</b>		<b>\$1,090,359</b>	<b>\$1,123,421</b>	<b>\$1,134,291</b>	<b>\$1,135,000</b>	<b>\$1,135,000</b>
<b>Method of Financing:</b>						
770	Est Oth Educ & Gen Inco	\$1,090,359	\$1,123,421	\$1,134,291	\$1,135,000	\$1,135,000
<b>SUBTOTAL, MOF (GENERAL REVENUE FUNDS - DEDICATED)</b>		<b>\$1,090,359</b>	<b>\$1,123,421</b>	<b>\$1,134,291</b>	<b>\$1,135,000</b>	<b>\$1,135,000</b>
<b>TOTAL, METHOD OF FINANCE (INCLUDING RIDERS)</b>					<b>\$1,135,000</b>	<b>\$1,135,000</b>
<b>TOTAL, METHOD OF FINANCE (EXCLUDING RIDERS)</b>		<b>\$1,090,359</b>	<b>\$1,123,421</b>	<b>\$1,134,291</b>	<b>\$1,135,000</b>	<b>\$1,135,000</b>

**FULL TIME EQUIVALENT POSITIONS:**

**STRATEGY DESCRIPTION AND JUSTIFICATION:**

This strategy represents tuition set aside for the Texas Public Education Grants program as required by Section 56.033 of the Texas Education Code.

**EXTERNAL/INTERNAL FACTORS IMPACTING STRATEGY:**

**761 Texas A&M International University**

GOAL: 2 Provide Infrastructure Support Statewide Goal/Benchmark: 2 0  
 OBJECTIVE: 1 Provide Operation and Maintenance of E&G Space Service Categories:  
 STRATEGY: 1 Educational and General Space Support Service: 10 Income: A.2 Age: B.3

CODE	DESCRIPTION	Exp 2013	Est 2014	Bud 2015	BL 2016 <sup>(1)</sup>	BL 2017 <sup>(1)</sup>
<b>Efficiency Measures:</b>						
1	Space Utilization Rate of Classrooms	58.00	60.00	60.00	60.00	60.00
2	Space Utilization Rate of Labs	100.00	100.00	100.00	100.00	100.00
<b>Objects of Expense:</b>						
1001	SALARIES AND WAGES	\$1,824,151	\$1,187,427	\$1,199,484	\$0	\$0
1002	OTHER PERSONNEL COSTS	\$104,596	\$62,068	\$61,670	\$0	\$0
2001	PROFESSIONAL FEES AND SERVICES	\$17,592	\$17,592	\$0	\$0	\$0
2004	UTILITIES	\$1,167,626	\$1,057,192	\$1,018,002	\$0	\$0
2009	OTHER OPERATING EXPENSE	\$349,159	\$1,147,141	\$1,229,291	\$0	\$0
<b>TOTAL, OBJECT OF EXPENSE</b>		<b>\$3,463,124</b>	<b>\$3,471,420</b>	<b>\$3,508,447</b>	<b>\$0</b>	<b>\$0</b>
<b>Method of Financing:</b>						
1	General Revenue Fund	\$2,269,616	\$2,282,165	\$2,282,030	\$0	\$0
<b>SUBTOTAL, MOF (GENERAL REVENUE FUNDS)</b>		<b>\$2,269,616</b>	<b>\$2,282,165</b>	<b>\$2,282,030</b>	<b>\$0</b>	<b>\$0</b>
<b>Method of Financing:</b>						
770	Est Oth Educ & Gen Inco	\$1,193,508	\$1,189,255	\$1,226,417	\$0	\$0
<b>SUBTOTAL, MOF (GENERAL REVENUE FUNDS - DEDICATED)</b>		<b>\$1,193,508</b>	<b>\$1,189,255</b>	<b>\$1,226,417</b>	<b>\$0</b>	<b>\$0</b>

(1) - Formula funded strategies are not requested in 2016-17 because amounts are not determined by institutions.

**761 Texas A&M International University**

GOAL:	2	Provide Infrastructure Support	Statewide Goal/Benchmark:	2	0
OBJECTIVE:	1	Provide Operation and Maintenance of E&G Space	Service Categories:		
STRATEGY:	1	Educational and General Space Support	Service: 10	Income: A.2	Age: B.3

CODE	DESCRIPTION	Exp 2013	Est 2014	Bud 2015	BL 2016 <sup>(1)</sup>	BL 2017 <sup>(1)</sup>
<b>TOTAL, METHOD OF FINANCE (INCLUDING RIDERS)</b>					<b>\$0</b>	<b>\$0</b>
<b>TOTAL, METHOD OF FINANCE (EXCLUDING RIDERS)</b>		<b>\$3,463,124</b>	<b>\$3,471,420</b>	<b>\$3,508,447</b>	<b>\$0</b>	<b>\$0</b>
<b>FULL TIME EQUIVALENT POSITIONS:</b>		<b>30.3</b>	<b>30.2</b>	<b>25.5</b>	<b>27.0</b>	<b>27.0</b>

**STRATEGY DESCRIPTION AND JUSTIFICATION:**

The Infrastructure Support formula distributes funding associated with plant-related formulas and utilities. This formula is driven by the predicted square feet for universities' educational and general activities produced by the Coordinating Board Space Projection Model.

The portion of the formula related to utilities is adjusted to reflect differences in unit costs for purchased utilities, including electricity, natural gas, water and wastewater, and thermal energy.

**EXTERNAL/INTERNAL FACTORS IMPACTING STRATEGY:**

(1) - Formula funded strategies are not requested in 2016-17 because amounts are not determined by institutions.

**761 Texas A&M International University**

GOAL: 2 Provide Infrastructure Support Statewide Goal/Benchmark: 2 0  
 OBJECTIVE: 1 Provide Operation and Maintenance of E&G Space Service Categories:  
 STRATEGY: 2 Tuition Revenue Bond Retirement Service: 10 Income: A.2 Age: B.3

CODE	DESCRIPTION	Exp 2013	Est 2014	Bud 2015	BL 2016	BL 2017
<b>Objects of Expense:</b>						
2008	DEBT SERVICE	\$8,442,909	\$8,406,072	\$7,795,114	\$6,636,348	\$6,650,315
<b>TOTAL, OBJECT OF EXPENSE</b>		<b>\$8,442,909</b>	<b>\$8,406,072</b>	<b>\$7,795,114</b>	<b>\$6,636,348</b>	<b>\$6,650,315</b>
<b>Method of Financing:</b>						
1	General Revenue Fund	\$8,442,909	\$8,406,072	\$7,795,114	\$6,636,348	\$6,650,315
<b>SUBTOTAL, MOF (GENERAL REVENUE FUNDS)</b>		<b>\$8,442,909</b>	<b>\$8,406,072</b>	<b>\$7,795,114</b>	<b>\$6,636,348</b>	<b>\$6,650,315</b>
<b>TOTAL, METHOD OF FINANCE (INCLUDING RIDERS)</b>					<b>\$6,636,348</b>	<b>\$6,650,315</b>
<b>TOTAL, METHOD OF FINANCE (EXCLUDING RIDERS)</b>		<b>\$8,442,909</b>	<b>\$8,406,072</b>	<b>\$7,795,114</b>	<b>\$6,636,348</b>	<b>\$6,650,315</b>

**FULL TIME EQUIVALENT POSITIONS:**

**STRATEGY DESCRIPTION AND JUSTIFICATION:**

The funding of TRB retirement covers the cost of existing buildings on campus.

**EXTERNAL/INTERNAL FACTORS IMPACTING STRATEGY:**

**761 Texas A&M International University**

GOAL:	2	Provide Infrastructure Support	Statewide Goal/Benchmark:	2	0
OBJECTIVE:	1	Provide Operation and Maintenance of E&G Space	Service Categories:		
STRATEGY:	5	Small Institution Supplement	Service:	19	
			Income:	A.2	
			Age:	B.3	

CODE	DESCRIPTION	Exp 2013	Est 2014	Bud 2015	BL 2016 <sup>(1)</sup>	BL 2017 <sup>(1)</sup>
<b>Objects of Expense:</b>						
1005	FACULTY SALARIES	\$0	\$418,050	\$418,050	\$0	\$0
<b>TOTAL, OBJECT OF EXPENSE</b>		<b>\$0</b>	<b>\$418,050</b>	<b>\$418,050</b>	<b>\$0</b>	<b>\$0</b>
<b>Method of Financing:</b>						
1	General Revenue Fund	\$0	\$418,050	\$418,050	\$0	\$0
<b>SUBTOTAL, MOF (GENERAL REVENUE FUNDS)</b>		<b>\$0</b>	<b>\$418,050</b>	<b>\$418,050</b>	<b>\$0</b>	<b>\$0</b>
<b>TOTAL, METHOD OF FINANCE (INCLUDING RIDERS)</b>					<b>\$0</b>	<b>\$0</b>
<b>TOTAL, METHOD OF FINANCE (EXCLUDING RIDERS)</b>		<b>\$0</b>	<b>\$418,050</b>	<b>\$418,050</b>	<b>\$0</b>	<b>\$0</b>
<b>FULL TIME EQUIVALENT POSITIONS:</b>		<b>0.0</b>	<b>5.3</b>	<b>6.0</b>	<b>6.0</b>	<b>6.0</b>

**STRATEGY DESCRIPTION AND JUSTIFICATION:**

The small institution supplement funding assists growing universities as they transition from small to mid-size universities.

**EXTERNAL/INTERNAL FACTORS IMPACTING STRATEGY:**

(1) - Formula funded strategies are not requested in 2016-17 because amounts are not determined by institutions.

**761 Texas A&M International University**

GOAL:	3	Provide Special Item Support	Statewide Goal/Benchmark:	2	0
OBJECTIVE:	1	Instructional Support Special Item Support	Service Categories:		
STRATEGY:	1	PhD Program in Business	Service:	19	Income: A.2      Age: B.3

CODE	DESCRIPTION	Exp 2013	Est 2014	Bud 2015	BL 2016	BL 2017
<b>Objects of Expense:</b>						
1001	SALARIES AND WAGES	\$107,859	\$0	\$0	\$0	\$0
1002	OTHER PERSONNEL COSTS	\$19,251	\$0	\$0	\$0	\$0
1005	FACULTY SALARIES	\$956,484	\$0	\$0	\$0	\$0
3001	CLIENT SERVICES	\$34,761	\$0	\$0	\$0	\$0
<b>TOTAL, OBJECT OF EXPENSE</b>		<b>\$1,118,355</b>	<b>\$0</b>	<b>\$0</b>	<b>\$0</b>	<b>\$0</b>
<b>Method of Financing:</b>						
1	General Revenue Fund	\$1,091,015	\$0	\$0	\$0	\$0
<b>SUBTOTAL, MOF (GENERAL REVENUE FUNDS)</b>		<b>\$1,091,015</b>	<b>\$0</b>	<b>\$0</b>	<b>\$0</b>	<b>\$0</b>
<b>Method of Financing:</b>						
770	Est Oth Educ & Gen Inco	\$27,340	\$0	\$0	\$0	\$0
<b>SUBTOTAL, MOF (GENERAL REVENUE FUNDS - DEDICATED)</b>		<b>\$27,340</b>	<b>\$0</b>	<b>\$0</b>	<b>\$0</b>	<b>\$0</b>

**761 Texas A&M International University**

GOAL:	3	Provide Special Item Support	Statewide Goal/Benchmark:	2	0
OBJECTIVE:	1	Instructional Support Special Item Support	Service Categories:		
STRATEGY:	1	PhD Program in Business	Service: 19	Income: A.2	Age: B.3

CODE	DESCRIPTION	Exp 2013	Est 2014	Bud 2015	BL 2016	BL 2017
<b>TOTAL, METHOD OF FINANCE (INCLUDING RIDERS)</b>					<b>\$0</b>	<b>\$0</b>
<b>TOTAL, METHOD OF FINANCE (EXCLUDING RIDERS)</b>		<b>\$1,118,355</b>	<b>\$0</b>	<b>\$0</b>	<b>\$0</b>	<b>\$0</b>
<b>FULL TIME EQUIVALENT POSITIONS:</b>		<b>10.3</b>	<b>0.0</b>	<b>0.0</b>	<b>0.0</b>	<b>0.0</b>

**STRATEGY DESCRIPTION AND JUSTIFICATION:**

This strategy no longer exists.

**EXTERNAL/INTERNAL FACTORS IMPACTING STRATEGY:**

**761 Texas A&M International University**

GOAL:	3	Provide Special Item Support	Statewide Goal/Benchmark:	2	0
OBJECTIVE:	1	Instructional Support Special Item Support	Service Categories:		
STRATEGY:	2	Faculty Enhancement	Service: 19	Income: A.2	Age: B.3

CODE	DESCRIPTION	Exp 2013	Est 2014	Bud 2015	BL 2016	BL 2017
<b>Objects of Expense:</b>						
1005	FACULTY SALARIES	\$751,813	\$0	\$0	\$0	\$0
<b>TOTAL, OBJECT OF EXPENSE</b>		<b>\$751,813</b>	<b>\$0</b>	<b>\$0</b>	<b>\$0</b>	<b>\$0</b>
<b>Method of Financing:</b>						
1	General Revenue Fund	\$750,000	\$0	\$0	\$0	\$0
<b>SUBTOTAL, MOF (GENERAL REVENUE FUNDS)</b>		<b>\$750,000</b>	<b>\$0</b>	<b>\$0</b>	<b>\$0</b>	<b>\$0</b>
<b>Method of Financing:</b>						
770	Est Oth Educ & Gen Inco	\$1,813	\$0	\$0	\$0	\$0
<b>SUBTOTAL, MOF (GENERAL REVENUE FUNDS - DEDICATED)</b>		<b>\$1,813</b>	<b>\$0</b>	<b>\$0</b>	<b>\$0</b>	<b>\$0</b>
<b>TOTAL, METHOD OF FINANCE (INCLUDING RIDERS)</b>					<b>\$0</b>	<b>\$0</b>
<b>TOTAL, METHOD OF FINANCE (EXCLUDING RIDERS)</b>		<b>\$751,813</b>	<b>\$0</b>	<b>\$0</b>	<b>\$0</b>	<b>\$0</b>
<b>FULL TIME EQUIVALENT POSITIONS:</b>		<b>12.4</b>	<b>0.0</b>	<b>0.0</b>	<b>0.0</b>	<b>0.0</b>



**761 Texas A&M International University**

GOAL:	3	Provide Special Item Support	Statewide Goal/Benchmark:	2	0
OBJECTIVE:	1	Instructional Support Special Item Support	Service Categories:		
STRATEGY:	2	Faculty Enhancement	Service: 19	Income: A.2	Age: B.3

<b>CODE</b>	<b>DESCRIPTION</b>	<b>Exp 2013</b>	<b>Est 2014</b>	<b>Bud 2015</b>	<b>BL 2016</b>	<b>BL 2017</b>
-------------	--------------------	-----------------	-----------------	-----------------	----------------	----------------

**STRATEGY DESCRIPTION AND JUSTIFICATION:**

This strategy no longer exists.

**EXTERNAL/INTERNAL FACTORS IMPACTING STRATEGY:**

**761 Texas A&M International University**

GOAL:	3	Provide Special Item Support	Statewide Goal/Benchmark:	1	0
OBJECTIVE:	1	Instructional Support Special Item Support	Service Categories:		
STRATEGY:	3	Academic and Student Support	Service: 19	Income: A.2	Age: B.3

CODE	DESCRIPTION	Exp 2013	Est 2014	Bud 2015	BL 2016	BL 2017
<b>Objects of Expense:</b>						
1005	FACULTY SALARIES	\$0	\$1,841,015	\$1,841,015	\$1,841,015	\$1,841,015
<b>TOTAL, OBJECT OF EXPENSE</b>		<b>\$0</b>	<b>\$1,841,015</b>	<b>\$1,841,015</b>	<b>\$1,841,015</b>	<b>\$1,841,015</b>
<b>Method of Financing:</b>						
1	General Revenue Fund	\$0	\$1,841,015	\$1,841,015	\$1,841,015	\$1,841,015
<b>SUBTOTAL, MOF (GENERAL REVENUE FUNDS)</b>		<b>\$0</b>	<b>\$1,841,015</b>	<b>\$1,841,015</b>	<b>\$1,841,015</b>	<b>\$1,841,015</b>
<b>TOTAL, METHOD OF FINANCE (INCLUDING RIDERS)</b>					<b>\$1,841,015</b>	<b>\$1,841,015</b>
<b>TOTAL, METHOD OF FINANCE (EXCLUDING RIDERS)</b>		<b>\$0</b>	<b>\$1,841,015</b>	<b>\$1,841,015</b>	<b>\$1,841,015</b>	<b>\$1,841,015</b>
<b>FULL TIME EQUIVALENT POSITIONS:</b>		<b>0.0</b>	<b>24.0</b>	<b>25.0</b>	<b>25.0</b>	<b>25.0</b>

**STRATEGY DESCRIPTION AND JUSTIFICATION:**

Academic and Student Support provides resources to recruit and retain faculty to provide students with a quality education, along with student scholarships and assistantships.

**EXTERNAL/INTERNAL FACTORS IMPACTING STRATEGY:**

**761 Texas A&M International University**

GOAL:	3	Provide Special Item Support	Statewide Goal/Benchmark:	1	0
OBJECTIVE:	1	Instructional Support Special Item Support	Service Categories:		
STRATEGY:	3	Academic and Student Support	Service: 19	Income: A.2	Age: B.3

<b>CODE</b>	<b>DESCRIPTION</b>	<b>Exp 2013</b>	<b>Est 2014</b>	<b>Bud 2015</b>	<b>BL 2016</b>	<b>BL 2017</b>
-------------	--------------------	-----------------	-----------------	-----------------	----------------	----------------

Academic and Student Support represents 9% of the University’s total appropriations and funds 11% of E&G faculty. It is base funding for the University. Over the next two years, this special item funding will be used to retain and recruit faculty members and to provide opportunities for them to engage in sponsored research, which will increase revenues to the State of Texas. In addition, the funding of these faculty positions helps decrease our reliance on adjunct faculty, which is critical for maintaining and improving persistence rates for first- and second-year students.

Additional information on Academic and Student Support is available in Schedule 9, Special Item Information.

**761 Texas A&M International University**

GOAL:	3	Provide Special Item Support	Statewide Goal/Benchmark:	2	0
OBJECTIVE:	3	Public Service Special Item Support	Service Categories:		
STRATEGY:	1	Institute for International Trade	Service:	13	
			Income:	A.2	
			Age:	B.3	

CODE	DESCRIPTION	Exp 2013	Est 2014	Bud 2015	BL 2016	BL 2017
<b>Objects of Expense:</b>						
1001	SALARIES AND WAGES	\$179,705	\$260,145	\$264,884	\$130,027	\$130,027
2001	PROFESSIONAL FEES AND SERVICES	\$30,888	\$43,456	\$29,640	\$30,000	\$30,000
2003	CONSUMABLE SUPPLIES	\$3,842	\$1,566	\$29,698	\$25,000	\$25,000
2005	TRAVEL	\$8,559	\$5,476	\$8,692	\$10,000	\$10,000
2009	OTHER OPERATING EXPENSE	\$12,924	\$22,270	\$0	\$0	\$0
5000	CAPITAL EXPENDITURES	\$8,858	\$0	\$0	\$0	\$0
<b>TOTAL, OBJECT OF EXPENSE</b>		<b>\$244,776</b>	<b>\$332,913</b>	<b>\$332,914</b>	<b>\$195,027</b>	<b>\$195,027</b>
<b>Method of Financing:</b>						
1	General Revenue Fund	\$57,140	\$57,140	\$57,140	\$57,140	\$57,140
<b>SUBTOTAL, MOF (GENERAL REVENUE FUNDS)</b>		<b>\$57,140</b>	<b>\$57,140</b>	<b>\$57,140</b>	<b>\$57,140</b>	<b>\$57,140</b>
<b>Method of Financing:</b>						
770	Est Oth Educ & Gen Inco	\$49,749	\$137,886	\$137,887	\$0	\$0
<b>SUBTOTAL, MOF (GENERAL REVENUE FUNDS - DEDICATED)</b>		<b>\$49,749</b>	<b>\$137,886</b>	<b>\$137,887</b>	<b>\$0</b>	<b>\$0</b>
<b>Method of Financing:</b>						
777	Interagency Contracts	\$137,887	\$137,887	\$137,887	\$137,887	\$137,887

**761 Texas A&M International University**

GOAL:	3	Provide Special Item Support	Statewide Goal/Benchmark:	2	0
OBJECTIVE:	3	Public Service Special Item Support	Service Categories:		
STRATEGY:	1	Institute for International Trade	Service: 13	Income: A.2	Age: B.3

CODE	DESCRIPTION	Exp 2013	Est 2014	Bud 2015	BL 2016	BL 2017
<b>SUBTOTAL, MOF (OTHER FUNDS)</b>		<b>\$137,887</b>	<b>\$137,887</b>	<b>\$137,887</b>	<b>\$137,887</b>	<b>\$137,887</b>
<b>TOTAL, METHOD OF FINANCE (INCLUDING RIDERS)</b>					<b>\$195,027</b>	<b>\$195,027</b>
<b>TOTAL, METHOD OF FINANCE (EXCLUDING RIDERS)</b>		<b>\$244,776</b>	<b>\$332,913</b>	<b>\$332,914</b>	<b>\$195,027</b>	<b>\$195,027</b>
<b>FULL TIME EQUIVALENT POSITIONS:</b>		<b>4.5</b>	<b>10.1</b>	<b>10.0</b>	<b>5.5</b>	<b>5.5</b>

**STRATEGY DESCRIPTION AND JUSTIFICATION:**

The Institute supports the international mission of the University by collecting and publishing economic indicators for the Texas-Mexico border region, promoting research on international trade and related issues, and encouraging scholarly productivity of its faculty and students. This funding has made possible the establishment of a database containing monthly border trade, including vehicular, passenger, truck, rail and pedestrian traffic on all major Texas-Mexico border points of entry. This information is available to business, government agencies, other institutions and the general public. The funding also supports numerous studies and research monographs and publications dealing with economic development and competitiveness of the border region.

**EXTERNAL/INTERNAL FACTORS IMPACTING STRATEGY:**

**761 Texas A&M International University**

GOAL:	3	Provide Special Item Support	Statewide Goal/Benchmark:	2	0
OBJECTIVE:	3	Public Service Special Item Support	Service Categories:		
STRATEGY:	1	Institute for International Trade	Service: 13	Income: A.2	Age: B.3

<b>CODE</b>	<b>DESCRIPTION</b>	<b>Exp 2013</b>	<b>Est 2014</b>	<b>Bud 2015</b>	<b>BL 2016</b>	<b>BL 2017</b>
-------------	--------------------	-----------------	-----------------	-----------------	----------------	----------------

The Institute will continue to publish the highly regarded International Trade Journal and will create a database for manuscript submissions and acceptance information for the Journal. The Institute is also working on a partnership with Taylor & Francis/Routledge, the Journal's current publishers, to get the Journal into the Social Science Citation Index which provides researchers and students with access to bibliographic and citation information needed to find research data, journals and researchers. The Institute will also expand cross-border relationships with Mexican and Central American businesses and continue to provide research opportunities in international business for faculty. As the Institute matures and becomes more established in the academic community, it will be able to attract higher level scholars, elevating the scholarly standing of the University. Its International Trade Journal, already well-established in its 26th year of publication, should continue to become increasingly selective and more widely known.

Additional information on the Institute for International Trade is available in Schedule 9, Special Item Information.

**761 Texas A&M International University**

GOAL:	3	Provide Special Item Support	Statewide Goal/Benchmark:	2	0
OBJECTIVE:	3	Public Service Special Item Support	Service Categories:		
STRATEGY:	2	Small Business Development Center	Service: 13	Income: A.2	Age: B.3

CODE	DESCRIPTION	Exp 2013	Est 2014	Bud 2015	BL 2016	BL 2017
<b>Objects of Expense:</b>						
1001	SALARIES AND WAGES	\$168,641	\$173,013	\$176,050	\$181,500	\$181,500
2009	OTHER OPERATING EXPENSE	\$280	\$8,487	\$5,450	\$0	\$0
<b>TOTAL, OBJECT OF EXPENSE</b>		<b>\$168,921</b>	<b>\$181,500</b>	<b>\$181,500</b>	<b>\$181,500</b>	<b>\$181,500</b>
<b>Method of Financing:</b>						
1	General Revenue Fund	\$165,000	\$181,500	\$181,500	\$181,500	\$181,500
<b>SUBTOTAL, MOF (GENERAL REVENUE FUNDS)</b>		<b>\$165,000</b>	<b>\$181,500</b>	<b>\$181,500</b>	<b>\$181,500</b>	<b>\$181,500</b>
<b>Method of Financing:</b>						
770	Est Oth Educ & Gen Inco	\$3,921	\$0	\$0	\$0	\$0
<b>SUBTOTAL, MOF (GENERAL REVENUE FUNDS - DEDICATED)</b>		<b>\$3,921</b>	<b>\$0</b>	<b>\$0</b>	<b>\$0</b>	<b>\$0</b>
<b>TOTAL, METHOD OF FINANCE (INCLUDING RIDERS)</b>					<b>\$181,500</b>	<b>\$181,500</b>
<b>TOTAL, METHOD OF FINANCE (EXCLUDING RIDERS)</b>		<b>\$168,921</b>	<b>\$181,500</b>	<b>\$181,500</b>	<b>\$181,500</b>	<b>\$181,500</b>
<b>FULL TIME EQUIVALENT POSITIONS:</b>		<b>3.3</b>	<b>5.3</b>	<b>6.0</b>	<b>6.0</b>	<b>6.0</b>

**761 Texas A&M International University**

GOAL:	3	Provide Special Item Support	Statewide Goal/Benchmark:	2	0
OBJECTIVE:	3	Public Service Special Item Support	Service Categories:		
STRATEGY:	2	Small Business Development Center	Service:	13	Income: A.2      Age: B.3

CODE	DESCRIPTION	Exp 2013	Est 2014	Bud 2015	BL 2016	BL 2017
------	-------------	----------	----------	----------	---------	---------

**STRATEGY DESCRIPTION AND JUSTIFICATION:**

The Small Business Development Center offers services which promote the growth, expansion, innovation, increased productivity, and improved management for small businesses. These services, which include individual business counseling and technical assistance, group training seminars and workshops, advocacy, and research information, not only facilitate new business start-ups and help existing business expand, but also strengthen the economies of Webb, Zapata and Jim Hogg counties.

**EXTERNAL/INTERNAL FACTORS IMPACTING STRATEGY:**

The South-West Texas Border Small Business Development Center (SBDC) Network provides consulting and technical assistance to the small business community in Webb, Zapata, and Jim Hogg Counties. The goal is to help start and grow small businesses in the region.

- The mission of the SBDC is to aid entrepreneurs in creating regional economic growth through development and expansion of small businesses by fostering innovation, increased productivity, and improved management.
- The Eagle Ford Shale has generated an enormous economic impact in the region, and there is no sign of it diminishing in the near future.
- Entrepreneurs offer new ideas and services in many areas, including road expansion and maintenance, housing, food service, and more.
- New and expanded small businesses will increase employment opportunities in the region.
- Allows for development of new partnerships with local financial institutions who will fund these entrepreneurial efforts.

Additional information on the Small Business Development Center is available in Schedule 9, Special Item Information.



**761 Texas A&M International University**

GOAL:	3	Provide Special Item Support	Statewide Goal/Benchmark:	2	0
OBJECTIVE:	4	Institutional Support Special Item Support	Service Categories:		
STRATEGY:	1	Institutional Enhancement	Service:	19	Income: A.2      Age: B.3

CODE	DESCRIPTION	Exp 2013	Est 2014	Bud 2015	BL 2016	BL 2017
<b>Objects of Expense:</b>						
1005	FACULTY SALARIES	\$5,426,726	\$5,926,726	\$5,926,726	\$5,926,726	\$5,926,726
<b>TOTAL, OBJECT OF EXPENSE</b>		<b>\$5,426,726</b>	<b>\$5,926,726</b>	<b>\$5,926,726</b>	<b>\$5,926,726</b>	<b>\$5,926,726</b>
<b>Method of Financing:</b>						
1	General Revenue Fund	\$5,426,726	\$5,926,726	\$5,926,726	\$5,926,726	\$5,926,726
<b>SUBTOTAL, MOF (GENERAL REVENUE FUNDS)</b>		<b>\$5,426,726</b>	<b>\$5,926,726</b>	<b>\$5,926,726</b>	<b>\$5,926,726</b>	<b>\$5,926,726</b>
<b>TOTAL, METHOD OF FINANCE (INCLUDING RIDERS)</b>					<b>\$5,926,726</b>	<b>\$5,926,726</b>
<b>TOTAL, METHOD OF FINANCE (EXCLUDING RIDERS)</b>		<b>\$5,426,726</b>	<b>\$5,926,726</b>	<b>\$5,926,726</b>	<b>\$5,926,726</b>	<b>\$5,926,726</b>
<b>FULL TIME EQUIVALENT POSITIONS:</b>		<b>90.6</b>	<b>95.8</b>	<b>95.0</b>	<b>95.0</b>	<b>95.0</b>

**STRATEGY DESCRIPTION AND JUSTIFICATION:**

The 74th Texas Legislature authorized an expansion of the University to 4-year status in fall, 1995. The South Texas Border Initiative supported the hiring of faculty and staff to handle the rapid growth in enrollment and the expansion of academic programs. This continues today with an 82% increase in headcount since 2003. Institutional Enhancement currently funds 28% of the University's total appropriation and 44% of E&G faculty. It represents a significant portion of base funding.

**761 Texas A&M International University**

GOAL:	3	Provide Special Item Support	Statewide Goal/Benchmark:	2	0
OBJECTIVE:	4	Institutional Support Special Item Support	Service Categories:		
STRATEGY:	1	Institutional Enhancement	Service: 19	Income: A.2	Age: B.3

CODE	DESCRIPTION	Exp 2013	Est 2014	Bud 2015	BL 2016	BL 2017
------	-------------	----------	----------	----------	---------	---------

**EXTERNAL/INTERNAL FACTORS IMPACTING STRATEGY:**

As mentioned above, Institutional Enhancement represents 28% of the University’s total appropriations, funds 44% of E&G faculty, and is a significant portion of the University’s base funding. Over the next two years, this special item funding will be used to retain and recruit faculty members and to provide opportunities for them to engage in sponsored research, which will increase revenues to the State of Texas. In addition, the funding of these faculty positions helps decrease our reliance on adjunct faculty, which is critical for maintaining and improving persistence rates for first-and second-year students.

Additional information on Institutional Enhancement is available in Schedule 9, Special Item Information.

**761 Texas A&M International University**

GOAL:	3	Provide Special Item Support	Statewide Goal/Benchmark:	2	0
OBJECTIVE:	4	Institutional Support Special Item Support	Service Categories:		
STRATEGY:	3	Outreach and Enrollment	Service: 19	Income: A.2	Age: B.3

CODE	DESCRIPTION	Exp 2013	Est 2014	Bud 2015	BL 2016	BL 2017
<b>Objects of Expense:</b>						
1001	SALARIES AND WAGES	\$566,228	\$543,871	\$257,546	\$250,000	\$250,000
1005	FACULTY SALARIES	\$202,064	\$206,129	\$492,454	\$500,000	\$500,000
<b>TOTAL, OBJECT OF EXPENSE</b>		<b>\$768,292</b>	<b>\$750,000</b>	<b>\$750,000</b>	<b>\$750,000</b>	<b>\$750,000</b>
<b>Method of Financing:</b>						
1	General Revenue Fund	\$750,000	\$750,000	\$750,000	\$750,000	\$750,000
<b>SUBTOTAL, MOF (GENERAL REVENUE FUNDS)</b>		<b>\$750,000</b>	<b>\$750,000</b>	<b>\$750,000</b>	<b>\$750,000</b>	<b>\$750,000</b>
<b>Method of Financing:</b>						
770	Est Oth Educ & Gen Inco	\$18,292	\$0	\$0	\$0	\$0
<b>SUBTOTAL, MOF (GENERAL REVENUE FUNDS - DEDICATED)</b>		<b>\$18,292</b>	<b>\$0</b>	<b>\$0</b>	<b>\$0</b>	<b>\$0</b>
<b>TOTAL, METHOD OF FINANCE (INCLUDING RIDERS)</b>					<b>\$750,000</b>	<b>\$750,000</b>
<b>TOTAL, METHOD OF FINANCE (EXCLUDING RIDERS)</b>		<b>\$768,292</b>	<b>\$750,000</b>	<b>\$750,000</b>	<b>\$750,000</b>	<b>\$750,000</b>
<b>FULL TIME EQUIVALENT POSITIONS:</b>		<b>25.9</b>	<b>25.7</b>	<b>25.0</b>	<b>25.0</b>	<b>25.0</b>

**761 Texas A&M International University**

GOAL:	3	Provide Special Item Support	Statewide Goal/Benchmark:	2	0
OBJECTIVE:	4	Institutional Support Special Item Support	Service Categories:		
STRATEGY:	3	Outreach and Enrollment	Service:	19	Income: A.2      Age: B.3

CODE	DESCRIPTION	Exp 2013	Est 2014	Bud 2015	BL 2016	BL 2017
------	-------------	----------	----------	----------	---------	---------

**STRATEGY DESCRIPTION AND JUSTIFICATION:**

The University prepares students for success through an aggressive outreach to local and regional schools, establishing one-on-one relationships to guide high school students through the financial aid process. Upon entering the University, a comprehensive program of advisement and academic support ensures retention and timely graduation. This funding enables the University to provide non-traditional students with the environment and tools necessary for success and makes Closing the Gaps possible. The resources provided by this funding enable the State's underserved population to become productive participants in the Texas economy.

**EXTERNAL/INTERNAL FACTORS IMPACTING STRATEGY:**

- TAMIU will increase outreach to high school students beyond a 120 mile radius of the University therefore increasing overall student enrollment and semester credit hour production.
- Increased offerings of required supplemental instruction for challenging core courses resulting in increased GPA and increased retention rates.
- Expansion of summer academic boot camp offerings in mathematics and writing.
- Initiation of HB 5 College Prep Courses in mathematics and language arts made possible because of TAMIU with local area high schools and local community college.
- Expanded Texas Success Initiative Assessment (TSIA) testing in area high schools to increase participation and college readiness.
- Offer more diverse Freshman Seminar course options in the core curriculum that include service learning, honors, study abroad, and study away experiences.

Additional information on Outreach and Enrollment is available in Schedule 9, Special Item Information.

**761 Texas A&M International University**

GOAL: 3 Provide Special Item Support  
 OBJECTIVE: 5 Exceptional Item Request  
 STRATEGY: 1 Exceptional Item Request

Statewide Goal/Benchmark: 2 0  
 Service Categories:  
 Service: 19 Income: A.2 Age: B.3

CODE	DESCRIPTION	Exp 2013	Est 2014	Bud 2015	BL 2016	BL 2017
<b>Objects of Expense:</b>						
1001	SALARIES AND WAGES	\$0	\$0	\$0	\$0	\$0
1005	FACULTY SALARIES	\$0	\$0	\$0	\$0	\$0
2009	OTHER OPERATING EXPENSE	\$0	\$0	\$0	\$0	\$0
5000	CAPITAL EXPENDITURES	\$0	\$0	\$0	\$0	\$0
<b>TOTAL, OBJECT OF EXPENSE</b>		<b>\$0</b>	<b>\$0</b>	<b>\$0</b>	<b>\$0</b>	<b>\$0</b>
<b>Method of Financing:</b>						
1	General Revenue Fund	\$0	\$0	\$0	\$0	\$0
<b>SUBTOTAL, MOF (GENERAL REVENUE FUNDS)</b>		<b>\$0</b>	<b>\$0</b>	<b>\$0</b>	<b>\$0</b>	<b>\$0</b>
<b>TOTAL, METHOD OF FINANCE (INCLUDING RIDERS)</b>					<b>\$0</b>	<b>\$0</b>
<b>TOTAL, METHOD OF FINANCE (EXCLUDING RIDERS)</b>		<b>\$0</b>	<b>\$0</b>	<b>\$0</b>	<b>\$0</b>	<b>\$0</b>
<b>FULL TIME EQUIVALENT POSITIONS:</b>		<b>0.0</b>	<b>0.0</b>	<b>0.0</b>	<b>0.0</b>	<b>0.0</b>
<b>STRATEGY DESCRIPTION AND JUSTIFICATION:</b>						

**761 Texas A&M International University**

GOAL:	3	Provide Special Item Support	Statewide Goal/Benchmark:	2	0
OBJECTIVE:	5	Exceptional Item Request	Service Categories:		
STRATEGY:	1	Exceptional Item Request	Service: 19	Income: A.2	Age: B.3

<b>CODE</b>	<b>DESCRIPTION</b>	<b>Exp 2013</b>	<b>Est 2014</b>	<b>Bud 2015</b>	<b>BL 2016</b>	<b>BL 2017</b>
-------------	--------------------	-----------------	-----------------	-----------------	----------------	----------------

**EXTERNAL/INTERNAL FACTORS IMPACTING STRATEGY:**

**761 Texas A&M International University**

GOAL:	6	Research Funds	Statewide Goal/Benchmark:	2	0
OBJECTIVE:	1	Research Funds	Service Categories:		
STRATEGY:	1	Research Development Fund	Service: 21	Income: A.2	Age: B.3

CODE	DESCRIPTION	Exp 2013	Est 2014	Bud 2015	BL 2016	BL 2017
<b>Objects of Expense:</b>						
1001	SALARIES AND WAGES	\$126,623	\$247,339	\$247,339	\$0	\$0
<b>TOTAL, OBJECT OF EXPENSE</b>		<b>\$126,623</b>	<b>\$247,339</b>	<b>\$247,339</b>	<b>\$0</b>	<b>\$0</b>
<b>Method of Financing:</b>						
1	General Revenue Fund	\$126,623	\$247,339	\$247,339	\$0	\$0
<b>SUBTOTAL, MOF (GENERAL REVENUE FUNDS)</b>		<b>\$126,623</b>	<b>\$247,339</b>	<b>\$247,339</b>	<b>\$0</b>	<b>\$0</b>
<b>TOTAL, METHOD OF FINANCE (INCLUDING RIDERS)</b>					<b>\$0</b>	<b>\$0</b>
<b>TOTAL, METHOD OF FINANCE (EXCLUDING RIDERS)</b>		<b>\$126,623</b>	<b>\$247,339</b>	<b>\$247,339</b>	<b>\$0</b>	<b>\$0</b>
<b>FULL TIME EQUIVALENT POSITIONS:</b>		<b>2.5</b>	<b>4.7</b>	<b>6.0</b>	<b>6.0</b>	<b>6.0</b>

**STRATEGY DESCRIPTION AND JUSTIFICATION:**

The Research Development Fund is distributed among eligible institutions based on the average amount of restricted research funds expended by each institution per year for the three preceding fiscal years.

The purpose of these funds is to promote research capacity.

**761 Texas A&M International University**

GOAL:	6	Research Funds	Statewide Goal/Benchmark:	2	0
OBJECTIVE:	1	Research Funds	Service Categories:		
STRATEGY:	1	Research Development Fund	Service: 21	Income: A.2	Age: B.3

<b>CODE</b>	<b>DESCRIPTION</b>	<b>Exp 2013</b>	<b>Est 2014</b>	<b>Bud 2015</b>	<b>BL 2016</b>	<b>BL 2017</b>
-------------	--------------------	-----------------	-----------------	-----------------	----------------	----------------

**EXTERNAL/INTERNAL FACTORS IMPACTING STRATEGY:**



---

**SUMMARY TOTALS:**

<b>OBJECTS OF EXPENSE:</b>	<b>\$37,086,208</b>	<b>\$37,987,091</b>	<b>\$37,581,143</b>	<b>\$17,537,206</b>	<b>\$17,551,173</b>
<b>METHODS OF FINANCE (INCLUDING RIDERS):</b>				<b>\$17,537,206</b>	<b>\$17,551,173</b>
<b>METHODS OF FINANCE (EXCLUDING RIDERS):</b>	<b>\$37,086,208</b>	<b>\$37,987,091</b>	<b>\$37,581,143</b>	<b>\$17,537,206</b>	<b>\$17,551,173</b>
<b>FULL TIME EQUIVALENT POSITIONS:</b>	<b>397.0</b>	<b>520.0</b>	<b>520.0</b>	<b>520.0</b>	<b>520.0</b>

**4.A. Exceptional Item Request Schedule**  
 84th Regular Session, Agency Submission, Version 1  
 Automated Budget and Evaluation System of Texas (ABEST)

DATE: 10/15/2014  
 TIME: 4:09:29PM

Agency code: 761

Agency name:  
 Texas A&M International University

CODE	DESCRIPTION	Excp 2016	Excp 2017
	<p align="center"><b>Item Name:</b> Renovation of Library through Addition of Instructional and Support Spaces  <b>Item Priority:</b> 1  <b>Includes Funding for the Following Strategy or Strategies:</b> 02-01-02 Tuition Revenue Bond Retirement</p>		
<b>OBJECTS OF EXPENSE:</b>			
2008	DEBT SERVICE	5,414,161	5,414,161
	<b>TOTAL, OBJECT OF EXPENSE</b>	<b>\$5,414,161</b>	<b>\$5,414,161</b>
<b>METHOD OF FINANCING:</b>			
1	General Revenue Fund	5,414,161	5,414,161
	<b>TOTAL, METHOD OF FINANCING</b>	<b>\$5,414,161</b>	<b>\$5,414,161</b>

**DESCRIPTION / JUSTIFICATION:**

- Debt service for renovation of library through construction of an academic classroom/laboratory building and a support services building to vacate offices currently housed in the library.
- Provides for larger lecture halls and additional laboratory space to address rapid growth—73% projected increase for fall 2014 over fall 2005 (the last fiscal year TRB’s were approved).
- Accommodates larger classes. Currently, only nine classrooms seat over 100 students.
- Creates teaching laboratories to accommodate demand in STEM, nursing, and teaching fields.
- Creates a support services building to move support functions out of the library.
- Renovates existing non-library space for other offices currently in the library.
- Expands the library by repurposing vacated spaces (noted above) for modern library uses including study rooms, technology-enhanced collaboration spaces, and computer labs.
- Adds 17,000 GSF (approximately 11,000 NASF) to the library and support services building and 125,000 GSF (approximately 81,250 NASF) to the classroom/lab inventory with resultant parking.

**EXTERNAL/INTERNAL FACTORS:**

**4.A. Exceptional Item Request Schedule**  
84th Regular Session, Agency Submission, Version 1  
Automated Budget and Evaluation System of Texas (ABEST)

DATE: 10/15/2014  
TIME: 4:09:29PM

Agency code: 761

Agency name:

**Texas A&M International University**

CODE	DESCRIPTION	Excp 2016	Excp 2017
------	-------------	-----------	-----------

- This construction/expansion has been incorporated in the University master plan and is included in the plan filed with the Coordinating Board which projected an adjusted deficit in excess of 138,196 square feet in fall 2013.
- This project addresses the statewide “Closing the Gaps” goals because it provides instructional and instructional support space to accommodate new STEM, nursing, and education students.
- The growth of the University is meeting the needs of Hispanics from the border region by providing accessibility to higher education. This project permits an institution serving a 92% Hispanic population to expand offerings in critical STEM fields.
- The library at Texas A&M International is a regional center for students of all ages, faculty from all schools and colleges, and citizens of South Texas.
- The explosive population growth in the Laredo region will require expanded educational opportunities, and this project will aid in “Closing the Gaps” by providing necessary resources.
- Economic expansion requires an educated populace, and the rising generation, made productive by higher education, will be the economic engine for this region and the State.

Provision for Matching:

- The University believes it can provide a 10% match to this project’s funding by bonding a portion of its annual HEF allocation.

**4.A. Exceptional Item Request Schedule**  
 84th Regular Session, Agency Submission, Version 1  
 Automated Budget and Evaluation System of Texas (ABEST)

DATE: 10/15/2014  
 TIME: 4:09:29PM

Agency code: 761

Agency name:  
**Texas A&M International University**

CODE	DESCRIPTION		Excp 2016	Excp 2017
		<b>Item Name:</b> Petroleum Engineering Initiative		
		<b>Item Priority:</b> 2		
		<b>Includes Funding for the Following Strategy or Strategies:</b> 03-05-01 Exceptional Item Request		
<b>OBJECTS OF EXPENSE:</b>				
1005	FACULTY SALARIES		600,000	600,000
2009	OTHER OPERATING EXPENSE		500,000	500,000
5000	CAPITAL EXPENDITURES		1,900,000	1,900,000
	<b>TOTAL, OBJECT OF EXPENSE</b>		<b>\$3,000,000</b>	<b>\$3,000,000</b>
<b>METHOD OF FINANCING:</b>				
1	General Revenue Fund		3,000,000	3,000,000
	<b>TOTAL, METHOD OF FINANCING</b>		<b>\$3,000,000</b>	<b>\$3,000,000</b>
	<b>FULL-TIME EQUIVALENT POSITIONS (FTE):</b>		4.00	4.00

**DESCRIPTION / JUSTIFICATION:**

This item permits Texas A&M International University to expand its existing engineering program to include a focus on petroleum engineering and create The International Energy Institute.

Major Accomplishment Expected During The Next Two Years:

- The International Petroleum Institute will be created in collaboration with the Texas A&M University System and Texas A&M University College Station. The Institute, situated on the U.S./Mexico Border will house drilling cores, production data, seismic data, and log data from around the world. The Institute will also serve as a research center on oil and gas exploration in the Eagleford/Burgos basins, innovative drilling processes, and the economic, health and social impact of oil booms.
- Supports four new faculty positions with joint appointments in the Institute, equipment, and infrastructure, including new laboratories necessary to launch the petroleum engineering program by fall 2015.
- Leverages partnerships with the oil industry in South Texas.
- Supplements pledges by these partners amounting to \$2,000,000.
- Expands ability to compete for federal grants in STEM fields.
- Creates an opportunity not now afforded at any of the seven South Texas universities.

Funding Source Prior to Receiving Special Item Funding:

Special Item does not exist at present.

Formula Funding:

The first class of petroleum engineering students will be enrolled in fall 2015, which means that two cohorts will be included in the base period. Beginning in year three of the program, formula funding would be available.

Agency code: 761

Agency name:  
Texas A&M International University

CODE	DESCRIPTION	Excp 2016	Excp 2017
------	-------------	-----------	-----------

Non-general Sources of Funding:

The University hopes to leverage any State funding with its oil industry partnerships which have committed \$2,000,000 million in pledges.

Consequences of Not Funding:

Not funding this item means the University cannot expand its engineering program to include petroleum engineering. The demand for these engineers in South Texas amid the booming oil industry would go unmet.

**EXTERNAL/INTERNAL FACTORS:**

- The resources provided by this funding enable the State's underserved population to become productive participants in the Texas economy while also addressing the shortage of engineers in South Texas amid a booming oil industry. Engineering employment is expected to grow 18% over the next 10 years, petroleum engineering, 38%.
- This initiative will uniquely position the University, and the Texas A&M University System, to play a major role in the shale development in both the Eagle Ford and Burgos Shale plays.
- The most active shale play with over 200 rigs running, Eagle Ford in South Texas is expected to be developed for decades to come. Petroleum engineers will play a crucial role in drilling and maintaining the ever-increasing number of shale sites and pipelines.
- Permits an institution serving a 92% Hispanic population to expand offerings in critical STEM fields.
- The program, along with the Institute, will enhance the State's ability to maintain its international competitiveness in the petroleum industry.
- The offering of this high-demand program will increase graduates helping to "Close the Gaps," and increases the number of highly competent, well-qualified engineers who will be employed in the oil/energy industry in Texas.

**4.A. Exceptional Item Request Schedule**  
 84th Regular Session, Agency Submission, Version 1  
 Automated Budget and Evaluation System of Texas (ABEST)

DATE: 10/15/2014  
 TIME: 4:09:29PM

Agency code: 761

Agency name:  
**Texas A&M International University**

CODE	DESCRIPTION	Excp 2016	Excp 2017
	<b>Item Name:</b> Texas Academy of International and STEM Studies		
	<b>Item Priority:</b> 3		
	<b>Includes Funding for the Following Strategy or Strategies:</b> 03-05-01 Exceptional Item Request		
<b>OBJECTS OF EXPENSE:</b>			
1001	SALARIES AND WAGES	200,000	200,000
2009	OTHER OPERATING EXPENSE	650,000	650,000
5000	CAPITAL EXPENDITURES	150,000	150,000
	<b>TOTAL, OBJECT OF EXPENSE</b>	<b>\$1,000,000</b>	<b>\$1,000,000</b>
<b>METHOD OF FINANCING:</b>			
1	General Revenue Fund	1,000,000	1,000,000
	<b>TOTAL, METHOD OF FINANCING</b>	<b>\$1,000,000</b>	<b>\$1,000,000</b>
<b>FULL-TIME EQUIVALENT POSITIONS (FTE):</b>		3.00	3.00

**DESCRIPTION / JUSTIFICATION:**

Major Accomplishment Expected During The Next Two Years:

- Allows students to complete high school graduation requirements, including requirements for the Advanced High School program, while concurrently earning university academic credit.
- Fosters students' knowledge of real-world international issues and problems and teaches students to apply critical thinking and problem-solving skills to those issues and problems.
- Utilizes an interdisciplinary approach to introduce and develop issues, particularly those related to international concerns, throughout the curriculum.
- Supports a judicious Academy administration including a principal, counselor, and secretary along with operating funds to cover the cost of textbooks and programming.
- The offering of this program will increase graduates helping to "Close the Gaps" and enriches the pipeline of young Texans prepared to compete in a global economy.

**Funding Source Prior to Receiving Special Item Funding:**

The Texas Academy of International Studies was authorized by the 79th Legislature, but has not had adequate funding to allow for its implementation. In cooperation with local philanthropists who have donated \$175,000 to the program, the University will admit its first class in fall 2014.

**Formula Funding:**

The first Texas Academy cohort will be enrolled in fall 2014 and will be included in the current base period. Beginning in year three of the program, both cohorts will be included in the base period.

**Non-general Sources of Funding:**

The University hopes to leverage any State funding with philanthropic donations totaling \$750,000 over five years.

Agency code: 761

Agency name:

Texas A&M International University

CODE	DESCRIPTION	Excp 2016	Excp 2017
------	-------------	-----------	-----------

Consequences of Not Funding:

The University has admitted a modest cohort of approximately 40 students; without this funding, the Texas Academy will be unable to grow.

**EXTERNAL/INTERNAL FACTORS:**

- Creates an opportunity for the Laredo region similar to that afforded to students at the Texas Academy for Math and Sciences at the University of North Texas to meet the needs of academically endowed high school students of the region for a rigorous dual credit curriculum.
- Offers students learning opportunities related to international issues through in-depth research and field-based studies and an awareness of international careers and professional development opportunities.
- This item will enable the Academy to grow in size to approximately 100 students as envisioned by the legislation.
- The offering of this program will increase graduates helping to “Close the Gaps” and enriches the pipeline of young Texans prepared to compete in a global economy and marketplace.

**4.A. Exceptional Item Request Schedule**  
 84th Regular Session, Agency Submission, Version 1  
 Automated Budget and Evaluation System of Texas (ABEST)

DATE: 10/15/2014  
 TIME: 4:09:29PM

Agency code: 761

Agency name:  
**Texas A&M International University**

CODE	DESCRIPTION	Excp 2016	Excp 2017
	<b>Item Name:</b> Small Business Development Center <b>Item Priority:</b> 4 <b>Includes Funding for the Following Strategy or Strategies:</b> 03-05-01 Exceptional Item Request		
<b>OBJECTS OF EXPENSE:</b>			
2009	OTHER OPERATING EXPENSE	18,150	18,150
<b>TOTAL, OBJECT OF EXPENSE</b>		<b>\$18,150</b>	<b>\$18,150</b>
<b>METHOD OF FINANCING:</b>			
1	General Revenue Fund	18,150	18,150
<b>TOTAL, METHOD OF FINANCING</b>		<b>\$18,150</b>	<b>\$18,150</b>

**DESCRIPTION / JUSTIFICATION:**

- The additional resources provided by this funding for the existing Small Business Development Center Special Item will enable the SBDC to enhance its ability to work with existing and startup businesses, regionally, and help them take advantage of the opportunities presented by the Eagle Ford and Burgos Shale plays.
- The SBDC will develop and implement a curriculum that will address the needs of small business owners and assist in cultivating and promoting businesses related to the oil and gas industry.
- The requested funds will permit the SBDC to:
  - Retain the services of individuals who have the expertise in the oil and gas industry to help develop this unique curriculum.
  - Purchase necessary equipment and supplies and fund travel that will allow SBDC to develop, implement, and provide guides for start-up businesses that want to service the oil and gas industry in the region.

**EXTERNAL/INTERNAL FACTORS:**

- The South-West Texas Border Small Business Development Center Network provides consulting and technical assistance to the small business community in Webb, Zapata, and Jim Hogg Counties. The goal is to help start and grow small businesses in the region.
- The mission of the SBDC is to aid entrepreneurs in creating regional economic growth through development and expansion of small businesses by fostering innovation, increased productivity, and improved management.
- The Eagle Ford Shale has generated an enormous economic impact in the region, and there is no sign of it diminishing in the near future.
- Entrepreneurs offer new ideas and services in many areas, including road expansion and maintenance, housing, food service, and more.
- New and expanded small businesses will increase employment opportunities in the region.
- Allows for development of new partnerships with local financial institutions who will fund these entrepreneurial efforts.

Additional information on the Small Business Development Center is available in Schedule 9, Special Item Information.



**4.A. Exceptional Item Request Schedule**  
 84th Regular Session, Agency Submission, Version 1  
 Automated Budget and Evaluation System of Texas (ABEST)

DATE: 10/15/2014  
 TIME: 4:09:29PM

Agency code: 761

Agency name:  
 Texas A&M International University

CODE	DESCRIPTION	Excp 2016	Excp 2017
	<b>Item Name:</b> Repurposing of Kinesiology Building for Labs through Addition of Convocation Center		
	<b>Item Priority:</b> 5		
	<b>Includes Funding for the Following Strategy or Strategies:</b> 02-01-02 Tuition Revenue Bond Retirement		
 <b>OBJECTS OF EXPENSE:</b>			
2008	DEBT SERVICE	5,754,181	5,754,181
	<b>TOTAL, OBJECT OF EXPENSE</b>	<b>\$5,754,181</b>	<b>\$5,754,181</b>
 <b>METHOD OF FINANCING:</b>			
1	General Revenue Fund	5,754,181	5,754,181
	<b>TOTAL, METHOD OF FINANCING</b>	<b>\$5,754,181</b>	<b>\$5,754,181</b>

**DESCRIPTION / JUSTIFICATION:**

- Debt service for the refashioning of the existing Kinesiology building to include larger classrooms, laboratories, and offices and the construction of a new Health, Wellness, Kinesiology and Convocation Center capable of hosting University-wide events.
- The new center adds 133,000 GSF (86,500 NASF) with resultant parking, road work, and utilities.
- The additional classroom and laboratory space resulting from the revonation of the existing Kinesiology building will help address rapid growth, and will accommodate demand in STEM, nursing, and teaching fields.
- The new Health, Wellness, Kinesiology and Convocation Center will serve as an anchor for a \$20,000,000 pledge made by the City of Laredo for fields that will surround the Center.

**EXTERNAL/INTERNAL FACTORS:**

**4.A. Exceptional Item Request Schedule**  
84th Regular Session, Agency Submission, Version 1  
Automated Budget and Evaluation System of Texas (ABEST)

DATE: 10/15/2014  
TIME: 4:09:29PM

Agency code: 761

Agency name:

**Texas A&M International University**

CODE	DESCRIPTION	Excp 2016	Excp 2017
------	-------------	-----------	-----------

- This project has been incorporated in the University master plan and is included in the plan filed with the Coordinating Board which projected a deficit in excess of 138,000 square feet in fall 2013 and a space utilization efficiency lab score of 100.
- The rapid growth of the University (73% since 2005) is meeting the needs of Hispanics from the South Texas border region by providing accessibility to higher education, and this project permits an institution serving a 92% Hispanic population to expand offerings in critical STEM fields.
- The new Center will also become an indispensable part of our larger responsibility for regional outreach.
- A 90 acre tract donated to the State in 1993 included a provision requiring utilization of the land within 25 years, or it would revert to the Grantor. The State's use of the land for the new Center would prevent such a loss, catastrophic for future University growth.
- The establishment of the new Center includes a substantial investment by the City of Laredo to create fields around the new Health, Wellness, Kinesiology and Convocation Center, creating a community partnership.

Provision for Matching:

- The City of Laredo has pledged a significant investment of \$20,000,000 toward the development of this project including a series of fields envisioned to surround it. This community partnership represents in excess of 20% of the total project cost.

Agency code: 761 Agency name: Texas A&M International University

Code	Description	Excp 2016	Excp 2017
<b>Item Name:</b> Renovation of Library through Addition of Instructional and Support Spaces			
<b>Allocation to Strategy:</b> 2-1-2 Tuition Revenue Bond Retirement			
<b>OBJECTS OF EXPENSE:</b>			
2008	DEBT SERVICE	5,414,161	5,414,161
<b>TOTAL, OBJECT OF EXPENSE</b>		<b>\$5,414,161</b>	<b>\$5,414,161</b>
<b>METHOD OF FINANCING:</b>			
1	General Revenue Fund	5,414,161	5,414,161
<b>TOTAL, METHOD OF FINANCING</b>		<b>\$5,414,161</b>	<b>\$5,414,161</b>

Agency code: 761 Agency name: Texas A&M International University

Code	Description	Excp 2016	Excp 2017
<b>Item Name:</b> Petroleum Engineering Initiative			
<b>Allocation to Strategy:</b> 3-5-1 Exceptional Item Request			
<b>OBJECTS OF EXPENSE:</b>			
1005	FACULTY SALARIES	600,000	600,000
2009	OTHER OPERATING EXPENSE	500,000	500,000
5000	CAPITAL EXPENDITURES	1,900,000	1,900,000
<b>TOTAL, OBJECT OF EXPENSE</b>		<b>\$3,000,000</b>	<b>\$3,000,000</b>
<b>METHOD OF FINANCING:</b>			
1 General Revenue Fund		3,000,000	3,000,000
<b>TOTAL, METHOD OF FINANCING</b>		<b>\$3,000,000</b>	<b>\$3,000,000</b>
<b>FULL-TIME EQUIVALENT POSITIONS (FTE):</b>		4.0	4.0

Agency code: **761** Agency name: **Texas A&M International University**

Code	Description	Excp 2016	Excp 2017
<b>Item Name:</b> Texas Academy of International and STEM Studies			
<b>Allocation to Strategy:</b> 3-5-1 Exceptional Item Request			
<b>OBJECTS OF EXPENSE:</b>			
1001	SALARIES AND WAGES	200,000	200,000
2009	OTHER OPERATING EXPENSE	650,000	650,000
5000	CAPITAL EXPENDITURES	150,000	150,000
<b>TOTAL, OBJECT OF EXPENSE</b>		<b>\$1,000,000</b>	<b>\$1,000,000</b>
<b>METHOD OF FINANCING:</b>			
1	General Revenue Fund	1,000,000	1,000,000
<b>TOTAL, METHOD OF FINANCING</b>		<b>\$1,000,000</b>	<b>\$1,000,000</b>
<b>FULL-TIME EQUIVALENT POSITIONS (FTE):</b>		3.0	3.0

Agency code: 761 Agency name: Texas A&M International University

Code	Description	Excp 2016	Excp 2017
<b>Item Name:</b> Small Business Development Center			
<b>Allocation to Strategy:</b> 3-5-1 Exceptional Item Request			
<b>OBJECTS OF EXPENSE:</b>			
2009	OTHER OPERATING EXPENSE	18,150	18,150
<b>TOTAL, OBJECT OF EXPENSE</b>		<b>\$18,150</b>	<b>\$18,150</b>
<b>METHOD OF FINANCING:</b>			
1	General Revenue Fund	18,150	18,150
<b>TOTAL, METHOD OF FINANCING</b>		<b>\$18,150</b>	<b>\$18,150</b>

Agency code: 761 Agency name: Texas A&M International University

Code	Description	Excp 2016	Excp 2017
<b>Item Name:</b> Repurposing of Kinesiology Building for Labs through Addition of Convocation Center			
<b>Allocation to Strategy:</b> 2-1-2 Tuition Revenue Bond Retirement			
<b>OBJECTS OF EXPENSE:</b>			
2008	DEBT SERVICE	5,754,181	5,754,181
<b>TOTAL, OBJECT OF EXPENSE</b>		<b>\$5,754,181</b>	<b>\$5,754,181</b>
<b>METHOD OF FINANCING:</b>			
1	General Revenue Fund	5,754,181	5,754,181
<b>TOTAL, METHOD OF FINANCING</b>		<b>\$5,754,181</b>	<b>\$5,754,181</b>

**4.C. Exceptional Items Strategy Request**  
 84th Regular Session, Agency Submission, Version 1  
 Automated Budget and Evaluation System of Texas (ABEST)

**DATE:** 10/15/2014  
**TIME:** 4:09:30PM

Agency Code: **761** Agency name: **Texas A&M International University**

GOAL: 2 Provide Infrastructure Support Statewide Goal/Benchmark: 2 - 0  
 OBJECTIVE: 1 Provide Operation and Maintenance of E&G Space Service Categories:  
 STRATEGY: 2 Tuition Revenue Bond Retirement Service: 10 Income: A.2 Age: B.3

<b>CODE DESCRIPTION</b>	<b>Excp 2016</b>	<b>Excp 2017</b>
<b>OBJECTS OF EXPENSE:</b>		
2008 DEBT SERVICE	11,168,342	11,168,342
<b>Total, Objects of Expense</b>	<b>\$11,168,342</b>	<b>\$11,168,342</b>
<b>METHOD OF FINANCING:</b>		
1 General Revenue Fund	11,168,342	11,168,342
<b>Total, Method of Finance</b>	<b>\$11,168,342</b>	<b>\$11,168,342</b>

**EXCEPTIONAL ITEM(S) INCLUDED IN STRATEGY:**

Renovation of Library through Addition of Instructional and Support Spaces

Repurposing of Kinesiology Building for Labs through Addition of Convocation Center



**4.C. Exceptional Items Strategy Request**  
 84th Regular Session, Agency Submission, Version 1  
 Automated Budget and Evaluation System of Texas (ABEST)

**DATE: 10/15/2014**  
**TIME: 4:09:30PM**

Agency Code: **761** Agency name: **Texas A&M International University**

GOAL: 3 Provide Special Item Support Statewide Goal/Benchmark: 2 - 0  
 OBJECTIVE: 5 Exceptional Item Request Service Categories:  
 STRATEGY: 1 Exceptional Item Request Service: 19 Income: A.2 Age: B.3

<b>CODE DESCRIPTION</b>	<b>Excp 2016</b>	<b>Excp 2017</b>
-------------------------	------------------	------------------

**OBJECTS OF EXPENSE:**

1001 SALARIES AND WAGES	200,000	200,000
1005 FACULTY SALARIES	600,000	600,000
2009 OTHER OPERATING EXPENSE	1,168,150	1,168,150
5000 CAPITAL EXPENDITURES	2,050,000	2,050,000
<b>Total, Objects of Expense</b>	<b>\$4,018,150</b>	<b>\$4,018,150</b>

**METHOD OF FINANCING:**

1 General Revenue Fund	4,018,150	4,018,150
<b>Total, Method of Finance</b>	<b>\$4,018,150</b>	<b>\$4,018,150</b>

**FULL-TIME EQUIVALENT POSITIONS (FTE):**

7.0	7.0
-----	-----

**EXCEPTIONAL ITEM(S) INCLUDED IN STRATEGY:**

Petroleum Engineering Initiative  
 Texas Academy of International and STEM Studies  
 Small Business Development Center

**6.A. Historically Underutilized Business Supporting Schedule**  
 84th Regular Session, Agency Submission, Version 1  
 Automated Budget and Evaluation System of Texas (ABEST)

Date: **10/15/2014**  
 Time: **4:09:30PM**

Agency Code: **761** Agency: **Texas A&M International University**

COMPARISON TO STATEWIDE HUB PROCUREMENT GOALS

**A. Fiscal Year 2012 - 2013 HUB Expenditure Information**

Statewide HUB Goals	Procurement Category	% Goal	HUB Expenditures FY 2012			Total Expenditures FY 2012		HUB Expenditures FY 2013			Total Expenditures FY 2013	
			% Actual	Diff	Actual \$	% Goal	% Actual	Diff	Actual \$	% Goal	Actual \$	
11.2%	Heavy Construction	0.0 %	0.0%	0.0%	\$0	\$0	0.0 %	0.0%	0.0%	\$0	\$0	
21.1%	Building Construction	70.0 %	100.0%	30.0%	\$1,501,818	\$1,501,818	34.5 %	97.7%	63.2%	\$1,715,591	\$1,755,975	
32.7%	Special Trade Construction	58.0 %	51.3%	-6.7%	\$272,858	\$531,695	44.4 %	71.1%	26.7%	\$230,533	\$324,019	
23.6%	Professional Services	96.0 %	80.4%	-15.6%	\$85,718	\$106,593	50.7 %	0.0%	-50.7%	\$0	\$19,250	
24.6%	Other Services	49.0 %	49.0%	0.0%	\$1,474,072	\$3,010,021	37.1 %	48.5%	11.4%	\$2,415,353	\$4,982,508	
21.0%	Commodities	72.0 %	61.3%	-10.7%	\$2,428,006	\$3,964,027	44.7 %	60.3%	15.6%	\$3,907,089	\$6,479,359	
	<b>Total Expenditures</b>		<b>63.2%</b>		<b>\$5,762,472</b>	<b>\$9,114,154</b>		<b>61.0%</b>		<b>\$8,268,566</b>	<b>\$13,561,111</b>	

**B. Assessment of Fiscal Year 2012 - 2013 Efforts to Meet HUB Procurement Goals**

**Attainment:**

Texas A&M International University met or exceeded 2 of the 6 of the applicable agency HUB procurement goals in FY 2012.  
 Texas A&M International University met or exceeded 4 of the 6 of the applicable agency HUB procurement goals in FY 2013.

**Applicability:**

The "Heavy Construction" category is not applicable to agency operations in either fiscal year 2012 or 2013, since the agency did not have any purchases related to this category.

**Factors Affecting Attainment:**

To increase the opportunity with HUB vendors, the University Purchasing Department requires HUB solicitation on all biddable procurement over \$5,000. Departments are highly encouraged to use and make good-faith efforts in using HUB vendors for Procurement Card purchases and other spot purchases. The Purchasing Department maintains an on-line directory of HUB vendors for departments for quick and easy access.

**"Good-Faith" Efforts:**

- The Texas A&M International University Purchasing Department provides resources through their website to help HUBs seek contract opportunities.
- Participation in State and System Economic Opportunities Forums.
- Training will be provided on the use of HUB vendors to all University employees that have been delegated purchasing authority.

**Texas A&M International University (761)**  
**Estimated Funds Outside the Institution's Bill Pattern**  
**2014-15 and 2016-17 Biennia**

	2014-15 Biennium				2016-17 Biennium			
	<u>FY 2014 Revenue</u>	<u>FY 2015 Revenue</u>	<u>Biennium Total</u>	<u>Percent of Total</u>	<u>FY 2016 Revenue</u>	<u>FY 2017 Revenue</u>	<u>Biennium Total</u>	<u>Percent of Total</u>
<b>APPROPRIATED SOURCES INSIDE THE BILL PATTERN</b>								
State Appropriations (excluding HEGI & State Paid Fringes)	\$ 29,729,303	\$ 29,117,525	\$ 58,846,828		\$ 29,800,000	\$ 29,800,000	\$ 59,600,000	
Tuition and Fees (net of Discounts and Allowances)	10,971,706	11,026,565	21,998,271		10,800,000	10,800,000	21,600,000	
Endowment and Interest Income	32,244	32,566	64,810		32,000	32,000	64,000	
Sales and Services of Educational Activities (net)	-	-	-		-	-	-	
Sales and Services of Hospitals (net)	-	-	-		-	-	-	
Other Income	39,466	39,861	79,327		39,500	39,500	79,000	
<b>Total</b>	<b>40,772,719</b>	<b>40,216,517</b>	<b>80,989,236</b>	<b>44.2%</b>	<b>40,671,500</b>	<b>40,671,500</b>	<b>81,343,000</b>	<b>44.5%</b>
<b>APPROPRIATED SOURCES OUTSIDE THE BILL PATTERN</b>								
State Appropriations (HEGI & State Paid Fringes)	\$ -	\$ -	\$ -		\$ -	\$ -	\$ -	
Higher Education Assistance Funds	3,796,436	3,796,436	7,592,872		3,796,436	3,796,436	7,592,872	
Available University Fund	-	-	-		-	-	-	
State Grants and Contracts	110,762	100,000	210,762		100,000	100,000	200,000	
<b>Total</b>	<b>3,907,198</b>	<b>3,896,436</b>	<b>7,803,634</b>	<b>4.3%</b>	<b>3,896,436</b>	<b>3,896,436</b>	<b>7,792,872</b>	<b>4.3%</b>
<b>NON-APPROPRIATED SOURCES</b>								
Tuition and Fees (net of Discounts and Allowances)	31,940,895	32,260,304	64,201,199		31,941,000	31,941,000	63,882,000	
Federal Grants and Contracts	9,174,834	9,266,582	18,441,416		9,175,000	9,175,000	18,350,000	
State Grants and Contracts	-	-	-		-	-	-	
Local Government Grants and Contracts	489,585	494,481	984,066		490,000	490,000	980,000	
Private Gifts and Grants	181,686	183,503	365,189		182,000	182,000	364,000	
Endowment and Interest Income	512,961	518,091	1,031,052		513,000	513,000	1,026,000	
Sales and Services of Educational Activities (net)	772,087	779,808	1,551,895		773,000	773,000	1,546,000	
Sales and Services of Hospitals (net)	-	-	-		-	-	-	
Professional Fees (net)	31,650	31,967	63,617		31,700	31,700	63,400	
Auxiliary Enterprises (net)	3,723,324	3,760,557	7,483,881		3,724,000	3,724,000	7,448,000	
Other Income	92,807	93,735	186,542		92,800	92,800	185,600	
<b>Total</b>	<b>46,919,829</b>	<b>47,389,028</b>	<b>94,308,857</b>	<b>51.5%</b>	<b>46,922,500</b>	<b>46,922,500</b>	<b>93,845,000</b>	<b>51.3%</b>
<b>TOTAL SOURCES</b>	<b>\$ 91,599,746</b>	<b>\$ 91,501,981</b>	<b>\$ 183,101,727</b>	<b>100.0%</b>	<b>\$ 91,490,436</b>	<b>\$ 91,490,436</b>	<b>\$ 182,980,872</b>	<b>100.0%</b>

**6.I. Percent Biennial Base Reduction Options**

**10 % REDUCTION**

84th Regular Session, Agency Submission, Version 1  
Automated Budget and Evaluation System of Texas (ABEST)

Date: 10/15/2014

Time: 4:09:30PM

Agency code: 761 Agency name: Texas A&M International University

Item Priority and Name/ Method of Financing	REVENUE LOSS			REDUCTION AMOUNT			TARGET
	2016	2017	Biennial Total	2016	2017	Biennial Total	
<b>1 Instructional Flexible Hiring Freeze</b>							
<b>Category:</b> Programs - Service Reductions (FTEs-Hiring Freeze)							
<b>Item Comment:</b> Texas A&M International University will analyze all vacant positions and those that become vacant through resignations, terminations, or retirements to evaluate the necessity and/or how long the hiring of the position can be delayed. Faculty positions will be further evaluated for the possibility of replacing full-time faculty with lower cost adjuncts.							
Strategy: 3-4-1 Institutional Enhancement							
<u>General Revenue Funds</u>							
1 General Revenue Fund	\$587,500	\$587,500	\$1,175,000	\$587,500	\$587,500	\$1,175,000	
<b>General Revenue Funds Total</b>	<b>\$587,500</b>	<b>\$587,500</b>	<b>\$1,175,000</b>	<b>\$587,500</b>	<b>\$587,500</b>	<b>\$1,175,000</b>	
<b>Item Total</b>	<b>\$587,500</b>	<b>\$587,500</b>	<b>\$1,175,000</b>	<b>\$587,500</b>	<b>\$587,500</b>	<b>\$1,175,000</b>	
<b>FTE Reductions (From FY 2016 and FY 2017 Base Request)</b>				<b>9.0</b>	<b>9.0</b>		
<b>2 Non-Instructional Flexible Hiring Freeze</b>							
<b>Category:</b> Administrative - FTEs / Hiring and Salary Freeze							
<b>Item Comment:</b> Texas A&M International University will analyze all vacant positions and those that become vacant through resignations, terminations, or retirements to evaluate the necessity and/or how long the hiring of the position can be delayed.							
Strategy: 3-4-3 Outreach and Enrollment							
<u>General Revenue Funds</u>							
1 General Revenue Fund	\$272,647	\$272,647	\$545,294	\$272,647	\$272,647	\$545,294	
<b>General Revenue Funds Total</b>	<b>\$272,647</b>	<b>\$272,647</b>	<b>\$545,294</b>	<b>\$272,647</b>	<b>\$272,647</b>	<b>\$545,294</b>	
<b>Item Total</b>	<b>\$272,647</b>	<b>\$272,647</b>	<b>\$545,294</b>	<b>\$272,647</b>	<b>\$272,647</b>	<b>\$545,294</b>	
<b>FTE Reductions (From FY 2016 and FY 2017 Base Request)</b>				<b>9.0</b>	<b>9.0</b>		
<b>AGENCY TOTALS</b>							

**6.I. Percent Biennial Base Reduction Options**

**10 % REDUCTION**

84th Regular Session, Agency Submission, Version 1  
Automated Budget and Evaluation System of Texas (ABEST)

Date: 10/15/2014

Time: 4:09:30PM

Agency code: 761 Agency name: Texas A&M International University

Item Priority and Name/ Method of Financing	REVENUE LOSS			REDUCTION AMOUNT			TARGET
	2016	2017	Biennial Total	2016	2017	Biennial Total	
General Revenue Total	\$860,147	\$860,147	\$1,720,294	\$860,147	\$860,147	\$1,720,294	\$1,720,294
Agency Grand Total	\$860,147	\$860,147	\$1,720,294	\$860,147	\$860,147	\$1,720,294	
<b>Difference, Options Total Less Target</b>							
Agency FTE Reductions (From FY 2016 and FY 2017 Base Request)				18.0	18.0		

**8. Summary of Requests for Capital Project Financing**

<b>Agency Code:</b> 761		<b>Agency:</b> Texas A&M International University		<b>Prepared by:</b> Fred Juarez III								
<b>Date:</b> 10/15/2014			<b>Amount Requested</b>									
			<b>Project Category</b>									
<b>Project ID #</b>	<b>Capital Expenditure Category</b>	<b>Project Description</b>	<b>New Construction</b>	<b>Health &amp; Safety</b>	<b>Deferred Maintenance</b>	<b>Maintenance</b>	<b>2016-17 Total Amount Requested</b>	<b>MOF Code #</b>	<b>MOF Requested</b>	<b>2016-17 Estimated Debt Service (If Applicable)</b>	<b>Debt Service MOF Code #</b>	<b>Debt Service MOF Requested</b>
1	Construction of Building and Facilities	Renovation of library through construction of an academic classroom and laboratory building, and support services building to vacate offices currently housed in the library.	\$ 69,000,000				\$ 62,100,000		Tuition Revenue Bond	\$ 10,828,322	0001	General Revenue
2	Construction of Building and Facilities	Repurposing of Kinesiology building for larger classrooms, laboratories, and offices through addition of a new Health, Wellness, Kinesiology and Convocation Center capable of hosting University-wide events.	\$ 66,000,000				\$ 66,000,000		Tuition Revenue Bond	\$ 11,508,362	0001	General Revenue

84th Regular Session, Agency Submission, Version 1  
Automated Budget and Evaluation System of Texas (ABEST)

<b>761 Texas A&amp;M International University</b>					
	<b>Act 2013</b>	<b>Act 2014</b>	<b>Bud 2015</b>	<b>Est 2016</b>	<b>Est 2017</b>
<b>Gross Tuition</b>					
Gross Resident Tuition	7,614,134	7,870,662	8,028,075	8,108,356	8,189,440
Gross Non-Resident Tuition	2,949,645	3,113,771	3,176,046	3,207,807	3,239,885
<b>Gross Tuition</b>	<b>10,563,779</b>	<b>10,984,433</b>	<b>11,204,121</b>	<b>11,316,163</b>	<b>11,429,325</b>
Less: Resident Waivers and Exemptions (excludes Hazlewood)	(23,910)	(22,005)	(23,000)	(23,023)	(23,046)
Less: Non-Resident Waivers and Exemptions	(2,240,749)	(2,462,735)	(2,482,800)	(2,485,283)	(2,487,768)
Less: Hazlewood Exemptions	(138,457)	(181,436)	(181,500)	(182,700)	(182,700)
Less: Board Authorized Tuition Increases (TX. Educ. Code Ann. Sec. 54.008)	(323,642)	(339,713)	(346,629)	(346,629)	(346,629)
Less: Tuition increases charged to doctoral students with hours in excess of 100 (TX. Educ. Code Ann. Sec. 54.012)	0	0	0	0	0
Less: Tuition increases charged to undergraduate students with excessive hours above degree requirements. (TX. Educ. Code Ann. Sec. 61.0595)	0	0	0	0	0
Less: Tuition rebates for certain undergraduates (TX. Educ. Code Ann. Sec. 54.0065)	0	0	0	0	0
Plus: Tuition waived for Students 55 Years or Older (TX. Educ. Code Ann. Sec. 54.013)	0	0	0	0	0
Less: Tuition for repeated or excessive hours (TX. Educ. Code Ann. Sec. 54.014)	0	0	0	0	0
Plus: Tuition waived for Texas Grant Recipients (TX. Educ. Code Ann. Sec. 56.307)	0	0	0	0	0
<b>Subtotal</b>	<b>7,837,021</b>	<b>7,978,544</b>	<b>8,170,192</b>	<b>8,278,528</b>	<b>8,389,182</b>
Less: Transfer of funds for Texas Public Education Grants Program (Tex. Educ. Code Ann. Sec. 56c) and for Emergency Loans (Tex. Educ. Code Ann. Sec. 56d)	(1,090,359)	(1,123,421)	(1,134,291)	(1,135,000)	(1,135,000)
Less: Transfer of Funds (2%) for Physician Loans (Medical Schools)	0	0	0	0	0
Less: Statutory Tuition (Tx. Educ. Code Ann. Sec. 54.051) Set Aside for Doctoral Incentive Loan Repayment Program (Tx. Educ. Code Ann. Sec. 56.095)	0	0	0	0	0
Less: Other Authorized Deduction					
<b>Net Tuition</b>	<b>6,746,662</b>	<b>6,855,123</b>	<b>7,035,901</b>	<b>7,143,528</b>	<b>7,254,182</b>

84th Regular Session, Agency Submission, Version 1  
Automated Budget and Evaluation System of Texas (ABEST)

<b>761 Texas A&amp;M International University</b>					
	<b>Act 2013</b>	<b>Act 2014</b>	<b>Bud 2015</b>	<b>Est 2016</b>	<b>Est 2017</b>
Student Teaching Fees	0	0	0	0	0
Special Course Fees	0	0	0	0	0
Laboratory Fees	113,733	127,718	127,600	128,000	128,000
<b>Subtotal, Tuition and Fees (Formula Amounts for Health-Related Institutions)</b>	<b>6,860,395</b>	<b>6,982,841</b>	<b>7,163,501</b>	<b>7,271,528</b>	<b>7,382,182</b>
<b>OTHER INCOME</b>					
<b>Interest on General Funds:</b>					
Local Funds in State Treasury	38,224	37,589	42,142	44,249	46,462
Funds in Local Depositories, e.g., local amounts	0	0	0	0	0
Other Income (Itemize)					
Administration & Instructional Sales	31,961	31,761	31,216	31,528	31,844
Late Registration Fees	110,715	102,756	103,784	104,822	105,870
<b>Subtotal, Other Income</b>	<b>180,900</b>	<b>172,106</b>	<b>177,142</b>	<b>180,599</b>	<b>184,176</b>
<b>Subtotal, Other Educational and General Income</b>	<b>7,041,295</b>	<b>7,154,947</b>	<b>7,340,643</b>	<b>7,452,127</b>	<b>7,566,358</b>
Less: O.A.S.I. Applicable to Educational and General Local Funds Payrolls	(419,513)	(436,908)	(441,277)	(445,690)	(450,147)
Less: Teachers Retirement System and ORP Proportionality for Educational and General Funds	(373,477)	(400,984)	(401,184)	(401,385)	(401,585)
Less: Staff Group Insurance Premiums	(548,280)	(706,859)	(874,828)	(845,000)	(845,000)
<b>Total, Other Educational and General Income (Formula Amounts for General Academic Institutions)</b>	<b>5,700,025</b>	<b>5,610,196</b>	<b>5,623,354</b>	<b>5,760,052</b>	<b>5,869,626</b>
<b>Reconciliation to Summary of Request for FY 2013-2017:</b>					
Plus: Transfer of Funds for Texas Public Education Grants Program and Physician Loans	1,090,359	1,123,421	1,134,291	1,135,000	1,135,000
Plus: Transfer of Funds 2% for Physician Loans (Medical Schools)	0	0	0	0	0
Plus: Transfer of Funds for Cancellation of Student Loans of Physicians	0	0	0	0	0
Plus: Organized Activities	0	0	0	0	0
Plus: Staff Group Insurance Premiums	548,280	706,859	874,828	845,000	845,000
Plus: Board-authorized Tuition Income	323,642	339,713	346,629	346,629	346,629



84th Regular Session, Agency Submission, Version 1  
Automated Budget and Evaluation System of Texas (ABEST)

<b>761 Texas A&amp;M International University</b>					
	<b>Act 2013</b>	<b>Act 2014</b>	<b>Bud 2015</b>	<b>Est 2016</b>	<b>Est 2017</b>
Plus: Tuition Increases Charged to Doctoral Students with Hours in Excess of 100	0	0	0	0	0
Plus: Tuition Increases Charged to Undergraduate Students with Excessive Hours above Degree Requirements (TX. Educ. Code Ann. Sec. 61.0595)	0	0	0	0	0
Plus: Tuition rebates for certain undergraduates (TX Educ.Code Ann. Sec. 54.0065)	0	0	0	0	0
Plus: Tuition for repeated or excessive hours (TX. Educ. Code Ann. Sec. 54.014)	0	0	0	0	0
Less: Tuition Waived for Students 55 Years or Older	0	0	0	0	0
Less: Tuition Waived for Texas Grant Recipients	0	0	0	0	0
<b>Total, Other Educational and General Income Reported on Summary of Request</b>	<b>7,662,306</b>	<b>7,780,189</b>	<b>7,979,102</b>	<b>8,086,681</b>	<b>8,196,255</b>

Schedule 2: Selected Educational, General and Other Funds

10/15/2014 4:09:31PM

84th Regular Session, Agency Submission, Version 1  
 Automated Budget and Evaluation System of Texas (ABEST)

761 Texas A&M International University

	Act 2013	Act 2014	Bud 2015	Est 2016	Est 2017
<b>General Revenue Transfers</b>					
Transfer from Coordinating Board for Advanced Research Program	57,853	0	0	0	0
Transfer from Coordinating Board for Texas College Work Study Program (2011, 2012, 2013)	49,705	44,963	44,500	45,000	45,000
Transfer from Coordinating Board for Professional Nursing Shortage Reduction Program	90,317	94,162	50,000	50,000	50,000
Transfer of GR Group Insurance Premium from Comptroller (UT and TAMU Components only)	1,649,528	2,136,111	2,283,589	2,284,000	2,284,000
Less: Transfer to Other Institutions	0	0	0	0	0
Less: Transfer to Department of Health, Disproportionate Share - State-Owned Hospitals (2011, 2012, 2013)	0	0	0	0	0
Other (Itemize)					
Other: Fifth Year Accounting Scholarship	0	0	0	0	0
Texas Grants	5,507,142	6,907,300	7,908,333	7,910,000	7,910,000
B-on-Time Program	0	0	0	0	0
Less: Transfer to System Administration	0	0	0	0	0
<b>Subtotal, General Revenue Transfers</b>	<b>7,354,545</b>	<b>9,182,536</b>	<b>10,286,422</b>	<b>10,289,000</b>	<b>10,289,000</b>
General Revenue HEF for Operating Expenses	3,796,436	3,796,436	3,796,436	3,796,436	3,796,436
Transfer from Available University Funds (UT, A&M and Prairie View A&M Only)	0	0	0	0	0
<b>Other Additions (Itemize)</b>					
Increase Capital Projects - Educational and General Funds	0	0	0	0	0
Transfer from Department of Health, Disproportionate Share - State-owned Hospitals (2011, 2012, 2013)	0	0	0	0	0
Transfers from Other Funds, e.g., Designated funds transferred for educational and general activities (Itemize)	0	0	0	0	0
Transfer from Coordinating Board for Incentive Funding	0	0	0	0	0
Other (Itemize)					
<b>Gross Designated Tuition (Sec. 54.0513)</b>	<b>14,122,604</b>	<b>14,706,522</b>	<b>14,853,587</b>	<b>15,002,123</b>	<b>15,152,144</b>
<b>Indirect Cost Recovery (Sec. 145.001(d))</b>	<b>961,168</b>	<b>707,532</b>	<b>725,000</b>	<b>725,000</b>	<b>725,000</b>
<b>Correctional Managed Care Contracts</b>	<b>0</b>	<b>0</b>	<b>0</b>	<b>0</b>	<b>0</b>

**Schedule 3B: Staff Group Insurance Data Elements (UT/A&M)**  
 84th Regular Session, Agency Submission, Version 1  
 Automated Budget and Evaluation System of Texas (ABEST)

10/15/2014 4:09:32PM

**761 Texas A&M International University**

	<b>E&amp;G Enrollment</b>	<b>GR Enrollment</b>	<b>GR-D/OEGI Enrollment</b>	<b>Total E&amp;G (Check)</b>	<b>Local Non-E&amp;G</b>
<b>GR &amp; GR-D Percentages</b>					
GR %	75.14%				
GR-D %	24.86%				
<b>Total Percentage</b>	<b>100.00%</b>				
<b>FULL TIME ACTIVES</b>					
1a Employee Only	184	138	46	184	158
2a Employee and Children	61	46	15	61	36
3a Employee and Spouse	35	26	9	35	10
4a Employee and Family	56	42	14	56	31
5a Eligible, Opt Out	18	14	4	18	21
6a Eligible, Not Enrolled	12	9	3	12	19
<b>Total for This Section</b>	<b>366</b>	<b>275</b>	<b>91</b>	<b>366</b>	<b>275</b>
<b>PART TIME ACTIVES</b>					
1b Employee Only	5	4	1	5	20
2b Employee and Children	1	1	0	1	1
3b Employee and Spouse	1	1	0	1	3
4b Employee and Family	0	0	0	0	1
5b Eligible, Opt Out	5	4	1	5	3
6b Eligible, Not Enrolled	11	8	3	11	19
<b>Total for This Section</b>	<b>23</b>	<b>18</b>	<b>5</b>	<b>23</b>	<b>47</b>
<b>Total Active Enrollment</b>	<b>389</b>	<b>293</b>	<b>96</b>	<b>389</b>	<b>322</b>

**761 Texas A&M International University**

	<b>E&amp;G Enrollment</b>	<b>GR Enrollment</b>	<b>GR-D/OEGI Enrollment</b>	<b>Total E&amp;G (Check)</b>	<b>Local Non-E&amp;G</b>
<b>FULL TIME RETIREES by ERS</b>					
1c Employee Only	36	27	9	36	4
2c Employee and Children	2	2	0	2	0
3c Employee and Spouse	28	21	7	28	3
4c Employee and Family	4	3	1	4	0
5c Eligible, Opt Out	0	0	0	0	0
6c Eligible, Not Enrolled	0	0	0	0	0
<b>Total for This Section</b>	<b>70</b>	<b>53</b>	<b>17</b>	<b>70</b>	<b>7</b>
<b>PART TIME RETIREES by ERS</b>					
1d Employee Only	0	0	0	0	0
2d Employee and Children	0	0	0	0	0
3d Employee and Spouse	0	0	0	0	0
4d Employee and Family	0	0	0	0	0
5d Eligible, Opt Out	0	0	0	0	0
6d Eligible, Not Enrolled	0	0	0	0	0
<b>Total for This Section</b>	<b>0</b>	<b>0</b>	<b>0</b>	<b>0</b>	<b>0</b>
<b>Total Retirees Enrollment</b>	<b>70</b>	<b>53</b>	<b>17</b>	<b>70</b>	<b>7</b>
<b>TOTAL FULL TIME ENROLLMENT</b>					
1e Employee Only	220	165	55	220	162
2e Employee and Children	63	48	15	63	36
3e Employee and Spouse	63	47	16	63	13
4e Employee and Family	60	45	15	60	31
5e Eligible, Opt Out	18	14	4	18	21
6e Eligible, Not Enrolled	12	9	3	12	19
<b>Total for This Section</b>	<b>436</b>	<b>328</b>	<b>108</b>	<b>436</b>	<b>282</b>

761 Texas A&M International University

	<b>E&amp;G Enrollment</b>	<b>GR Enrollment</b>	<b>GR-D/OEGI Enrollment</b>	<b>Total E&amp;G (Check)</b>	<b>Local Non-E&amp;G</b>
<b>TOTAL ENROLLMENT</b>					
1f Employee Only	225	169	56	225	182
2f Employee and Children	64	49	15	64	37
3f Employee and Spouse	64	48	16	64	16
4f Employee and Family	60	45	15	60	32
5f Eligible, Opt Out	23	18	5	23	24
6f Eligible, Not Enrolled	23	17	6	23	38
<b>Total for This Section</b>	<b>459</b>	<b>346</b>	<b>113</b>	<b>459</b>	<b>329</b>

**Schedule 4: Computation of OASI**  
84th Regular Session, Agency Submission, Version 1  
Automated Budget and Evaluation System of Texas (ABEST)

**Agency 761 Texas A&M International University**

Proportionality Percentage Based on Comptroller Accounting Policy Statement #011, Exhibit 2	2013		2014		2015		2016		2017	
	<u>% to Total</u>	<u>Allocation of OASI</u>	<u>% to Total</u>	<u>Allocation of OASI</u>	<u>% to Total</u>	<u>Allocation of OASI</u>	<u>% to Total</u>	<u>Allocation of OASI</u>	<u>% to Total</u>	<u>Allocation of OASI</u>
General Revenue (% to Total)	75.0533	\$1,262,124	75.1366	\$1,320,326	75.1366	\$1,333,529	75.1366	\$1,346,864	75.1366	\$1,360,333
Other Educational and General Funds (% to Total)	24.9467	\$419,513	24.8634	\$436,908	24.8634	\$441,277	24.8634	\$445,690	24.8634	\$450,147
Health-Related Institutions Patient Income (% to Total)	0.0000	\$0	0.0000	\$0	0.0000	\$0	0.0000	\$0	0.0000	\$0
<b>Grand Total, OASI (100%)</b>	100.0000	<b>\$1,681,637</b>	100.0000	<b>\$1,757,234</b>	100.0000	<b>\$1,774,806</b>	100.0000	<b>\$1,792,554</b>	100.0000	<b>\$1,810,480</b>

**Schedule 5: Calculation of Retirement Proportionality and ORP Differential**

10/15/2014 4:09:32PM

84th Regular Session, Agency Submission, Version 1

Automated Budget and Evaluation System of Texas (ABEST)

**761 Texas A&M International University**

<b>Description</b>	<b>Act 2013</b>	<b>Act 2014</b>	<b>Bud 2015</b>	<b>Est 2016</b>	<b>Est 2017</b>
<b>Proportionality Amounts</b>					
Gross Educational and General Payroll - Subject To TRS Retirement	13,259,928	14,015,472	14,022,480	14,029,491	14,036,506
Employer Contribution to TRS Retirement Programs	848,635	953,053	953,530	954,006	954,483
Gross Educational and General Payroll - Subject To ORP Retirement	9,215,780	9,266,975	9,271,608	9,276,244	9,280,882
Employer Contribution to ORP Retirement Programs	648,463	659,694	660,024	660,354	660,684
<b>Proportionality Percentage</b>					
General Revenue	75.0533 %	75.1366 %	75.1366 %	75.1366 %	75.1366 %
Other Educational and General Income	24.9467 %	24.8634 %	24.8634 %	24.8634 %	24.8634 %
Health-related Institutions Patient Income	0.0000 %	0.0000 %	0.0000 %	0.0000 %	0.0000 %
<b>Proportional Contribution</b>					
Other Educational and General Proportional Contribution (Other E&G percentage x Total Employer Contribution to Retirement Programs)	373,477	400,984	401,184	401,385	401,585
HRI Patient Income Proportional Contribution (HRI Patient Income percentage x Total Employer Contribution To Retirement Programs)	0	0	0	0	0
<b>Differential</b>					
Gross Payroll Subject to Differential - Optional Retirement Program	9,215,779	9,266,975	9,271,608	9,276,244	9,280,882
<b>Total Differential</b>	<b>230,394</b>	<b>176,073</b>	<b>176,161</b>	<b>176,249</b>	<b>176,337</b>

**Schedule 6: Constitutional Capital Funding**  
84th Regular Session, Agency Submission, Version 1  
Automated Budget and Evaluation System of Texas (ABEST)

10/15/2014 4:09:33PM

<b>761 Texas A&amp;M International University</b>					
<b>Activity</b>	<b>Act 2013</b>	<b>Act 2014</b>	<b>Bud 2015</b>	<b>Est 2016</b>	<b>Est 2017</b>
A. PUF Bond Proceeds Allocation	0	0	0	0	0
Project Allocation					
Library Acquisitions	0	0	0	0	0
Construction, Repairs and Renovations	0	0	0	0	0
Furnishings & Equipment	0	0	0	0	0
Computer Equipment & Infrastructure	0	0	0	0	0
Reserve for Future Consideration	0	0	0	0	0
Other (Itemize)					
B. HEF General Revenue Allocation	3,796,436	3,796,436	3,796,436	3,796,436	3,796,436
Project Allocation					
Library Acquisitions	376,059	372,024	375,000	400,000	400,000
Construction, Repairs and Renovations	498,291	566,996	570,000	600,000	600,000
Furnishings & Equipment	1,215,785	1,200,000	1,250,000	1,596,436	1,596,436
Computer Equipment & Infrastructure	1,283,551	1,232,916	1,176,186	1,200,000	1,200,000
Reserve for Future Consideration	0	0	0	0	0
HEF for Debt Service	422,750	424,500	425,250	0	0
Other (Itemize)					



**Schedule 7: Personnel**  
 84th Regular Session, Agency Submission, Version 1  
 Automated Budget and Evaluation System of Texas (ABEST)

Date: 10/15/2014  
 Time: 4:09:34PM

Agency code: **761** Agency name: **Texas A&M International University**

	Actual 2013	Actual 2014	Budgeted 2015	Estimated 2016	Estimated 2017
<b>Part A.</b>					
<b>FTE Postions</b>					
<b>Directly Appropriated Funds (Bill Pattern)</b>					
Educational and General Funds Faculty Employees	173.2	216.5	221.5	222.0	222.0
Educational and General Funds Non-Faculty Employees	223.8	303.5	298.5	298.0	298.0
<b>Subtotal, Directly Appropriated Funds</b>	<b>397.0</b>	<b>520.0</b>	<b>520.0</b>	<b>520.0</b>	<b>520.0</b>
Non Appropriated Funds Employees	415.7	417.3	410.0	412.0	412.0
<b>Subtotal, Other Funds &amp; Non-Appropriated</b>	<b>415.7</b>	<b>417.3</b>	<b>410.0</b>	<b>412.0</b>	<b>412.0</b>
<b>GRAND TOTAL</b>	<b>812.7</b>	<b>937.3</b>	<b>930.0</b>	<b>932.0</b>	<b>932.0</b>
<b>Part B.</b>					
<b>Personnel Headcount</b>					
<b>Directly Appropriated Funds (Bill Pattern)</b>					
Educational and General Funds Faculty Employees	215.0	221.0	221.0	222.0	222.0
Educational and General Funds Non-Faculty Employees	219.0	304.0	299.0	298.0	298.0
<b>Subtotal, Directly Appropriated Funds</b>	<b>434.0</b>	<b>525.0</b>	<b>520.0</b>	<b>520.0</b>	<b>520.0</b>
Non Appropriated Funds Employees	419.0	420.0	429.0	430.0	430.0
<b>Subtotal, Non-Appropriated</b>	<b>419.0</b>	<b>420.0</b>	<b>429.0</b>	<b>430.0</b>	<b>430.0</b>
<b>GRAND TOTAL</b>	<b>853.0</b>	<b>945.0</b>	<b>949.0</b>	<b>950.0</b>	<b>950.0</b>

**Schedule 7: Personnel**  
 84th Regular Session, Agency Submission, Version 1  
 Automated Budget and Evaluation System of Texas (ABEST)

Date: 10/15/2014  
 Time: 4:09:34PM

Agency code: **761** Agency name: **Texas A&M International University**

	<b>Actual</b> 2013	<b>Actual</b> 2014	<b>Budgeted</b> 2015	<b>Estimated</b> 2016	<b>Estimated</b> 2017
<b>PART C.</b>					
<b>Salaries</b>					
<b>Directly Appropriated Funds (Bill Pattern)</b>					
Educational and General Funds Faculty Employees	\$15,178,579	\$16,476,832	\$16,881,570	\$16,965,978	\$17,050,808
Educational and General Funds Non-Faculty Employees	\$9,406,016	\$8,467,212	\$8,265,436	\$8,306,763	\$8,348,297
<b>Subtotal, Directly Appropriated Funds</b>	<b>\$24,584,595</b>	<b>\$24,944,044</b>	<b>\$25,147,006</b>	<b>\$25,272,741</b>	<b>\$25,399,105</b>
Non Appropriated Funds Employees	\$15,951,030	\$16,030,785	\$16,110,939	\$16,191,494	\$16,272,451
<b>Subtotal, Non-Appropriated</b>	<b>\$15,951,030</b>	<b>\$16,030,785</b>	<b>\$16,110,939</b>	<b>\$16,191,494</b>	<b>\$16,272,451</b>
<b>GRAND TOTAL</b>	<b>\$40,535,625</b>	<b>\$40,974,829</b>	<b>\$41,257,945</b>	<b>\$41,464,235</b>	<b>\$41,671,556</b>

**Agency 761 Texas A&M International University**

<b>Project Priority:</b>	<b>Project Code:</b>	<b>Tuition Revenue Bond Request</b>	<b>Total Project Cost</b>	<b>Cost Per Total Gross Square Feet</b>
1	1	\$ 62,100,000	\$ 69,000,000	\$ 486
<b>Name of Proposed Facility:</b>		<b>Project Type:</b>		
Library Renovation through Addition		Renovation/Constr		
<b>Location of Facility:</b>		<b>Type of Facility:</b>		
Campus		Classroom & Support Bld		
<b>Project Start Date:</b>		<b>Project Completion Date:</b>		
09/01/2015		08/31/2018		
<b>Gross Square Feet:</b>		<b>Net Assignable Square Feet in Project</b>		
142,000		81,250		

**Project Description**

- Renovation of library through construction of an academic classroom and laboratory building and a support services building to vacate offices currently housed in the library.
- Accommodates larger classes. At present, only nine classrooms seat over 100 students.
- Creates teaching laboratories to accommodate demand in STEM, nursing, and teaching fields.
- Creates a support services building to move support functions out of the library.
- Expands the library by repurposing vacated spaces (noted above) for modern library uses including study rooms, technology-enhanced collaboration spaces, and computer labs.
- Adds 17,000 GSF (approximately 11,000 NASF) to the library and support services building and 125,000 GSF (approximately 81,250 NASF) to the classroom/lab inventory with resultant parking.

**Matching:**

- The University believes it can provide a 10% match to this project's funding by bonding a portion of its annual HEF allocation.

**Agency 761 Texas A&M International University**

<b>Project Priority:</b>	<b>Project Code:</b>	<b>Tuition Revenue Bond Request</b>	<b>Total Project Cost</b>	<b>Cost Per Total Gross Square Feet</b>
2	2	\$ 66,000,000	\$ 86,000,000	\$ 496
<b>Name of Proposed Facility:</b>		<b>Project Type:</b>		
Kinesiology Renovation through Addition		Renovation/Constr		
<b>Location of Facility:</b>		<b>Type of Facility:</b>		
Campus		Kineslgy & Convocn Ctr		
<b>Project Start Date:</b>		<b>Project Completion Date:</b>		
09/01/2015		08/31/2018		
<b>Gross Square Feet:</b>		<b>Net Assignable Square Feet in Project</b>		
133,000		86,500		

**Project Description**

- The existing Kinesiology building will be refashioned to include larger classrooms, labs, and offices.
- The construction of a Health, Wellness, Kinesiology and Convocation (HWKC) Center to host University-wide events like commencement exercises will enable renovations to the existing Kinesiology building and fulfill a need for a larger indoor space which at present is capped at 1,400 seats.
- Adds 133,000 GSF (86,500 NASF) for the new Center with resultant parking, road work, and utilities.
- The additional classroom and lab space will help address rapid growth and will accommodate demand in STEM, nursing, and teaching fields.
- A 90 acre tract donated to the State in 1993 included a provision requiring utilization of the land within 25 years, or it would revert to the Grantor. The State's use of the land for the new Center will prevent such a loss.

**Matching:**

- The new HWKC Center will serve as an anchor for fields for which the City of Laredo has pledged \$20,000,000.

**Schedule 8D: Tuition Revenue Bonds Request by Project**

Agency Code: **761**

Agency Name: **Texas A&M International University**

Project Name	Authorization Year	Estimated Final Payment Date	Requested Amount 2016	Requested Amount 2017
Facilities and Infrastructure	1993	5/15/2017	\$ 514,178.00	\$ 440,716.00
Center for Western Hemispheric Trade	1997	5/15/2017	\$ 548,677.00	\$ 400,600.00
Intramural/PE Fields Courts	1997	5/15/2017	\$ 168,598.00	\$ 123,096.00
Library Books	1997	5/15/2017	\$ 296,170.00	\$ 216,240.00
Student Development Center	1997	5/15/2017	\$ 441,714.00	\$ 322,504.00
Fine Arts Building	1997	5/15/2017	\$ 151,391.00	\$ 637,332.00
Science Building	2001	5/15/2022	\$ 1,607,824.00	\$ 1,603,374.00
Kinesiology Facilities	2003	5/15/2025	\$ 881,472.00	\$ 881,679.00
Completion of Fine Arts Theater	2006	5/15/2029	\$ 272,742.00	\$ 272,582.00
Student Success Center	2006	5/15/2029	\$ 1,678,007.00	\$ 1,678,217.00
Loop Road and Chill Water Loop Project	2006	5/15/2029	\$ 75,575.00	\$ 73,975.00
			\$ 6,636,348.00	\$ 6,650,315.00

---

**761 Texas A&M International University**

---

**Special Item:**     1       **Institutional Enhancement**

**(1) Year Special Item:**             2000  
Original Appropriations:   \$5,872,337

**(2) Mission of Special Item:**

The 74th Texas Legislature authorized an expansion of the University to 4-year status in fall, 1995. The South Texas Border Initiative supported the hiring of faculty and staff to handle the rapid growth in enrollment and the expansion of academic programs. This continues today with an 82% increase in headcount since 2003. Institutional Enhancement currently funds 28% of the University's total appropriation and 44% of E&G faculty. It represents a significant portion of base funding.

**(3) (a) Major Accomplishments to Date:**

Funding 95 FTE faculty.

**(3) (b) Major Accomplishments Expected During the Next 2 Years:**

As mentioned above, Institutional Enhancement represents 28% of the University's total appropriations, funds 44% of E&G faculty, and is a significant portion of the University's base funding. Over the next two years, this special item funding will be used to retain and recruit faculty members and to provide opportunities for them to engage in sponsored research, which will increase revenues to the State of Texas. In addition, the funding of these faculty positions helps decrease our reliance on adjunct faculty, which is critical for maintaining and improving persistence rates for first-and second-year students

**(4) Funding Source Prior to Receiving Special Item Funding:**

The Institutional Enhancement special item was the result of the consolidation of several special items by the 74th Legislature, plus the addition of an initial \$1M per year for academic enhancement purposes.

**(5) Formula Funding:**

N

**(6) Non-general Revenue Sources of Funding:**

None.

**(7) Consequences of Not Funding:**

Institutional enhancement represents base funding for this institution. It is critical that this base funding continue to ensure both the quality and survival of programs. Without this base funding source, access to programs, such as nursing, engineering and teacher preparation, would have to be reduced, which the State has deemed a high priority.

---

**761 Texas A&M International University**

---

**Special Item:**     2       **Academic and Student Support**

**(1) Year Special Item:**             2014  
Original Appropriations:   \$1,841,015

**(2) Mission of Special Item:**

Academic and Student Support provides resources to recruit and retain faculty to provide students with a quality education, along with student scholarships and assistantships.

**(3) (a) Major Accomplishments to Date:**

Funding 24 FTE faculty.

**(3) (b) Major Accomplishments Expected During the Next 2 Years:**

Academic and Student Support represents 9% of the University's total appropriations and funds 11% of E&G faculty. It is base funding for the University. Over the next two years, this special item funding will be used to retain and recruit faculty members and to provide opportunities for them to engage in sponsored research, which will increase revenues to the State of Texas. In addition, the funding of these faculty positions helps decrease our reliance on adjunct faculty, which is critical for maintaining and improving persistence rates for first- and second-year students.

**(4) Funding Source Prior to Receiving Special Item Funding:**

The Academic and Student Support special item was created by a budget structure change of two special items approved in the 83rd Legislative Session.

**(5) Formula Funding:**

N

**(6) Non-general Revenue Sources of Funding:**

None.

**(7) Consequences of Not Funding:**

Academic and Student Support represents base funding for this institution. It is critical that this base funding continue to ensure both the quality and survival of programs. Without this base funding source, access to programs, such as nursing, engineering and teacher preparation, would have to be reduced, which the State has deemed a high priority.

---

**761 Texas A&M International University**

---

**Special Item:     3           Outreach & Enrollment**

**(1) Year Special Item:**           2012  
Original Appropriations:   \$1,000,000

**(2) Mission of Special Item:**

The University prepares students for success through intensive outreach to local and regional schools, establishing one-on-one relationships to guide high school students through the admissions and financial aid processes. Upon entering the University, a comprehensive program of orientation, advisement, and academic support ensures retention and timely graduation. This funding enables the University to provide non-traditional students in an underserved region with the environment and tools necessary for success and also makes “Closing the Gaps” possible. The resources provided by this funding enable the State’s underserved population to become productive participants in the Texas economy

**(3) (a) Major Accomplishments to Date:**

- Increased freshmen applications by 38% (from fall 2009 to fall 2013).
- Increased first time freshmen enrollment by 18% (from fall 2009 to fall 2013).
- Reduced students in developmental education to 10.4% (fall 2013)
- Increased the percentage of students ranked in the top 25% to 32% (fall 2013)
- Increased first time freshmen’s retention rate to 73.7% (fall 2013)
- Increased first time freshmen’s cumulative first year GPA from 2.52 to 2.63 (from fall 2010 to fall 2012).
- Reduced first year probation rates for first-time freshmen to lowest mark 7.25% (fall 2012).
- Reduced second term suspension rates for the first-time freshmen to 10.1% (fall 2012).
- Expanded Advising and Mentoring Center services for first- and second-year students staffed by professionals and peer mentors.
- Continued funding a retention specialist for freshmen and sophomore students (Early alert, provisionally admitted students, developmental students, students placed on probation).
- Expanded tutoring and supplemental instruction sessions.
- Expanded new student, transfer student, and parent orientation programs. Transfer student orientation is now mandatory.
- Placed outreach officers in San Antonio, Rio Grande Valley and Houston.
- Continued offering summer academic boot camps for students taking gateway courses.

**(3) (b) Major Accomplishments Expected During the Next 2 Years:**

- TAMIU will increase outreach to high school students beyond a 120 mile radius of the University therefore increasing overall student enrollment and semester credit hour production.
- Increased offerings of required supplemental instruction for challenging core courses resulting in increased GPA and increased retention rates.
- Expansion of summer academic boot camp offerings in mathematics and writing.
- Initiation of HB 5 College Prep Courses in mathematics and language arts made possible because of TAMIU with local area high schools and local community college.
- Expanded Texas Success Initiative Assessment (TSIA) testing in area high schools to increase participation and college readiness.
- Offer more diverse Freshman Seminar course options in the core curriculum that include service learning, honors, study abroad, and study away experiences.



---

**761 Texas A&M International University**

---

**(4) Funding Source Prior to Receiving Special Item Funding:**

There was no funding source prior to receiving this.

**(5) Formula Funding:**

N

**(6) Non-general Revenue Sources of Funding:**

Flat Advising fee charged to students

**(7) Consequences of Not Funding:**

Without funding, these effective programs, as currently delivered, would be eliminated. Reduction of funding would also hinder TAMIU's ability to support non-traditional students and obliterate any hope for students whose personal environment is incapable of supporting the academic rigor required of a university experience. The elimination of funding would prevent the University from fulfilling its legislative mandate of providing a higher education to an underserved population and "Closing the Gaps".

---

---

**761 Texas A&M International University**

---

**Special Item:**     4       **Institute for International Trade**

**(1) Year Special Item:**             1979  
Original Appropriations:     \$69,945

**(2) Mission of Special Item:**

The Institute supports the international mission of the University by collecting and publishing economic indicators for the Texas-Mexico border region, promoting research on international trade and related issues, and encouraging scholarly productivity of its faculty and students. The Institute was originally a part of the Graduate School of International Trade. When the College of Business Administration was established, the Institute served as an internal think tank for the University and the border region. The Institute for International Trade published the NAFTA Digest for several years prior to the establishment of NAFTA, and for several subsequent years. It also published the Border Business Indicators using a database established at the University and the International Trade Journal, a highly regarded scholarly quarterly now in its 26th year of publication. The same Special Item funding has also made possible the establishment of a database containing monthly border trade including vehicular, passenger, truck, rail and pedestrian traffic on all major Texas-Mexico border points of entry. This information is available to business, government agencies, other institutions and the general public. Numerous studies and research monographs and publications dealing with economic development and competitiveness of the border region have been made possible through these funds.

**(3) (a) Major Accomplishments to Date:**

The Institute has become a major source of information on international trade with emphasis on Western Hemispheric Trade issues, especially those relating to economic interaction between Texas and Mexico. Several partnerships have been established, including one with Tec de Monterrey, Universidad Regiomontana and Universidad Autonoma de Nuevo Leon to promote scholarly research beneficial to the border region. Scholars from around the world, particularly NAFTA countries and Central and South American countries, attend our annual conference where they present studies that help raise the level of education, the knowledge base, and thus the standard of living of the border region enabling its population to reach for the standard the rest of Texas and the United States to enjoy. Support for undergraduate and graduate research has been made possible through this funding, and the University as a whole has been able to achieve a higher quality manifested in its accreditation by SACS and its School of Business accreditation by AACSB--International. The PhD program in International Business Administration has made the publication of the International Trade Journal even more important to the University. Faculty members serve on its Editorial Advisory Board, and PhD students have engaged in the publication of the Journal through manuscript reviews and other ways, allowing them to apprentice and use the journal as a training platform.

**(3) (b) Major Accomplishments Expected During the Next 2 Years:**

The Institute will continue to publish the highly regarded International Trade Journal and will create a database for manuscript submissions and acceptance information for the Journal. The Institute is also working on a partnership with Taylor & Francis/Routledge, the Journal's current publishers, to get the Journal into the Social Science Citation Index which provides researchers and students with access to bibliographic and citation information needed to find research data, journals and researchers. The Institute will also expand cross-border relationships with Mexican and Central American businesses and continue to provide research opportunities in international business for faculty. As the Institute matures and becomes more established in the academic community, it will be able to attract higher level scholars, elevating the scholarly standing of the University. Its International Trade Journal, already well-established in its 26th year of publication, should continue to become increasingly selective and more widely known.

---

**761 Texas A&M International University**

---

**(4) Funding Source Prior to Receiving Special Item Funding:**

These programs did not exist prior to funding and were established thanks to the Special Item.

**(5) Formula Funding:**

N

**(6) Non-general Revenue Sources of Funding:**

None.

**(7) Consequences of Not Funding:**

The continuation of funding for the Institute is essential to the State's goal of bringing the border region to a level on par with the rest of the State. Failure to fund the Institute could seriously jeopardize the survival of many businesses in the Texas-Mexico border region. But for such funding, programs to fortify higher education of the border region could not have materialized, and continued funding will support vital research by faculty and students to enhance the border region's competitive position. Furthermore, the continued enhancement of the International Trade Journal's reputation as a source of scholarship for faculty, students, and the general academic community will be seriously hampered if funding were eliminated.

---

---

**761 Texas A&M International University**

---

**Special Item:**     5       **Small Business Development**

**(1) Year Special Item:**       2008  
Original Appropriations:   \$150,000

**(2) Mission of Special Item:**

The mission of the TAMIU Small Business Development Center is to create growth, expansion and innovation, increase productivity and improve management for entrepreneurs. This is accomplished through activities of counseling, training, technical assistance, advocacy, research studies, resource information and coordination with the U.S. Small Business Administration and other community business support services.

TAMIU SBDC services the small businesses and rural communities of Webb, Zapata and Jim Hogg Counties. Our certified professionals work closely with small business owners to achieve success resulting in economic development.

The vision of TAMIU SBDC is to be recognized as the leader in economic development and delivery of highly effective counseling and training services.

**(3) (a) Major Accomplishments to Date:**

The SBDC program supports the growth and development of the Texas economy by assisting in job creation, economic diversification, and business expansion. and by providing businesses advising, training, and research services.

Field offices have been strategically located and allow the TAMIU SBDC to have a certified business advisor at each location. Small business owners can easily visit any of our accessible locations for one-on-one counseling.

Training workshops are held at TAMIU and at the end of each training session, clients are asked to complete a survey. This has provided the opportunity to modify, enhance and diversify training programs to meet the needs of the small business community.

The TAMIU SBDC has also established a “Small Business Management Certification Program.” The program consists of business courses in the areas of starting a business, preparing a business plan, financial control, government opportunities, financial management via Quickbooks, customer service, marketing a business via social media, and legal issues. Individuals are required to complete two online business courses and attend a goal planning session with one of our certified business advisors. Completion of the program enhances their management skills and provides a good foundation for success. Many have expanded their business and/or started a new business due to the certification program.

**(3) (b) Major Accomplishments Expected During the Next 2 Years:**

The TAMIU SBDC will continue to provide the high standard of economic development by increasing capital access, business starts, business expansions, job creation and job retention. We will also assist entrepreneurs with confidential consulting services and management and technical training necessary for the improvement of operating and/or starting a business. In addition, we will continue with the TAMIU SBDC Small Business Management Certification Program in both Laredo and Zapata, Texas, and plan to expand this program to Hebbronville, Texas.

---

**761 Texas A&M International University**

---

**(4) Funding Source Prior to Receiving Special Item Funding:**

There was no funding source prior to receiving this.

**(5) Formula Funding:**

N

**(6) Non-general Revenue Sources of Funding:**

Primarily federal grants (U.S. Small Business Administration) and some user fees from training activities.

**(7) Consequences of Not Funding:**

The SBDC program is a major contributor toward fulfilling the University's public service mission with over 25,000 businesses served annually. It contributes to our University's research mission with applied economics projects and technology commercialization support and to the teaching mission. TAMIU SBDC Certified Business Advisors conduct market research to help companies export Texas goods and services. In addition, they help new businesses implement the QuickBooks software to better manage revenues, expenses, payroll, benefits and taxes. Without funding, client services like these would be reduced or eliminated. There would also be a loss of federal funds available to support business development extension services in the 79-county South-West Texas Border Region which would affect all partner-institutions of the Regional SBDC network.

---